

PRODUCT DATA SHEET



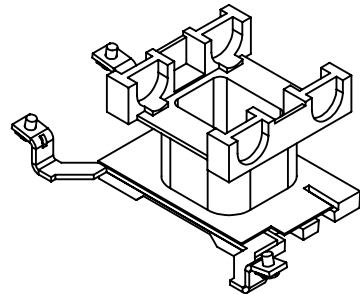
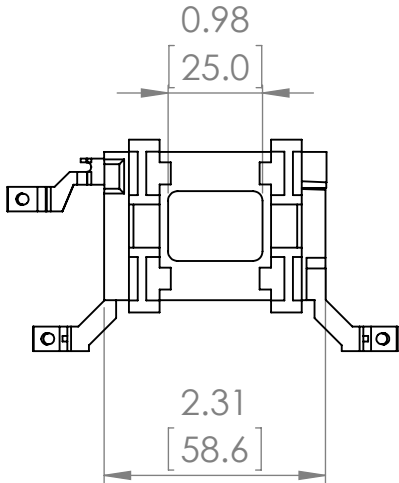
PART NUMBER - BLX1D6T7: BRAH Electric, aftermarket direct replacement coils for Telemecanique LX1D6T7, TeSys D Series, type BLX1D, 480V AC 50/60Hz, suitable for use with LC1D40, LC1D50, LC1D65, LC1D80, LC1D95, LC2D40, LC2D50, LC2D65, LC2D80, LC2D95 contactors

MAGNETIC COILS
PART NO. BLX1D6T7

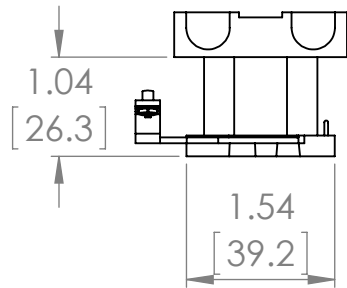
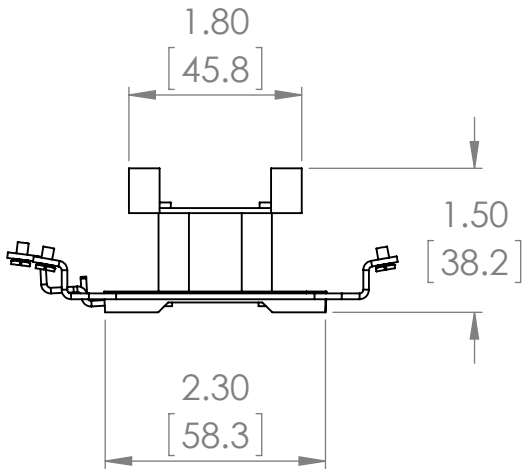
MANUFACTURER	BRAH Electric
SUB-CATEGORY	Coils
FAMILY	TeSys D
TYPE	BLX1D
TYPE FOR	LC1D40, LC1D50, LC1D65, LC1D80, LC1D95, LC2D40, LC2D50, LC2D65, LC2D80, LC2D95
VOLTAGE	480

Warranty: All Products sold by BRAH Electric are guaranteed to be free of defect for a period of one year, under the condition that the product has been installed and operated properly. All items proven defective within the one year period will be replaced by BRAH Electric. In the event that we cannot provide a direct replacement, your monies will be refunded in full. We are not responsible for any consequential losses or damages outside of the defective product as well as any replacements or repairs performed by another party without our written authorization from BRAH Electric.

REVISIONS				
ZONE	REV.	DESCRIPTION	DATE	APPROVED

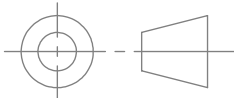



ISO VIEW



* NOTE: BRAH ELECTRIC BLX1D6T7 COIL IS A DIRECT REPLACEMENT FOR TELEMECANIQUE LX1D6T7, TESYS D SERIES, SUITABLE FOR USE WITH LC1D40, LC1D50, LC1D65, LC1D80, LC1D95, LC2D40, LC2D50, LC2D65, LC2D80, LC2D95 CONTACTORS

WWW.BRAHELECTRIC.COM, 855-355-2724

<div></div> <div>THIRD ANGLE PROJECTION</div>	UNLESS OTHERWISE NOTED		<div></div>				
	ALL DIMENSIONS ARE IN INCHES METRIC UNITS ARE DISPLAYED BENEATH IN [MM.]						
	MATERIAL		MOTOR CONTROLS				
	FINISH						
DO NOT SCALE DRAWING		N/A		<div>SIZE</div> <div>A</div>	<div>DWG. NO.</div> <div>BLX1D6T7</div>	<div>REV.</div> <div>A</div>	
THE INFORMATION CONTAINED IN THIS DRAWING IS THE SOLE PROPERTY OF BRAH ELECTRIC. ANY REPRODUCTION IN PART OR AS A WHOLE WITHOUT THE WRITTEN PERMISSION OF BRAH ELECTRIC IS PROHIBITED.		SCALE:1:1		WEIGHT:		SHEET 1 OF 1	