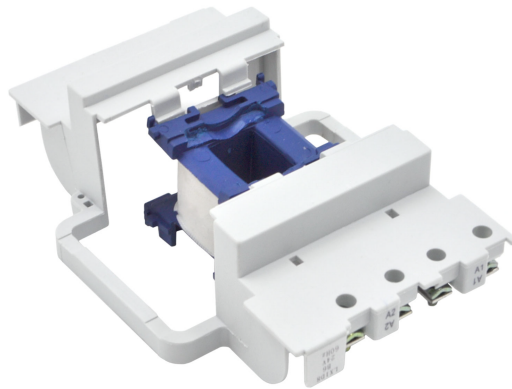


PRODUCT DATA SHEET



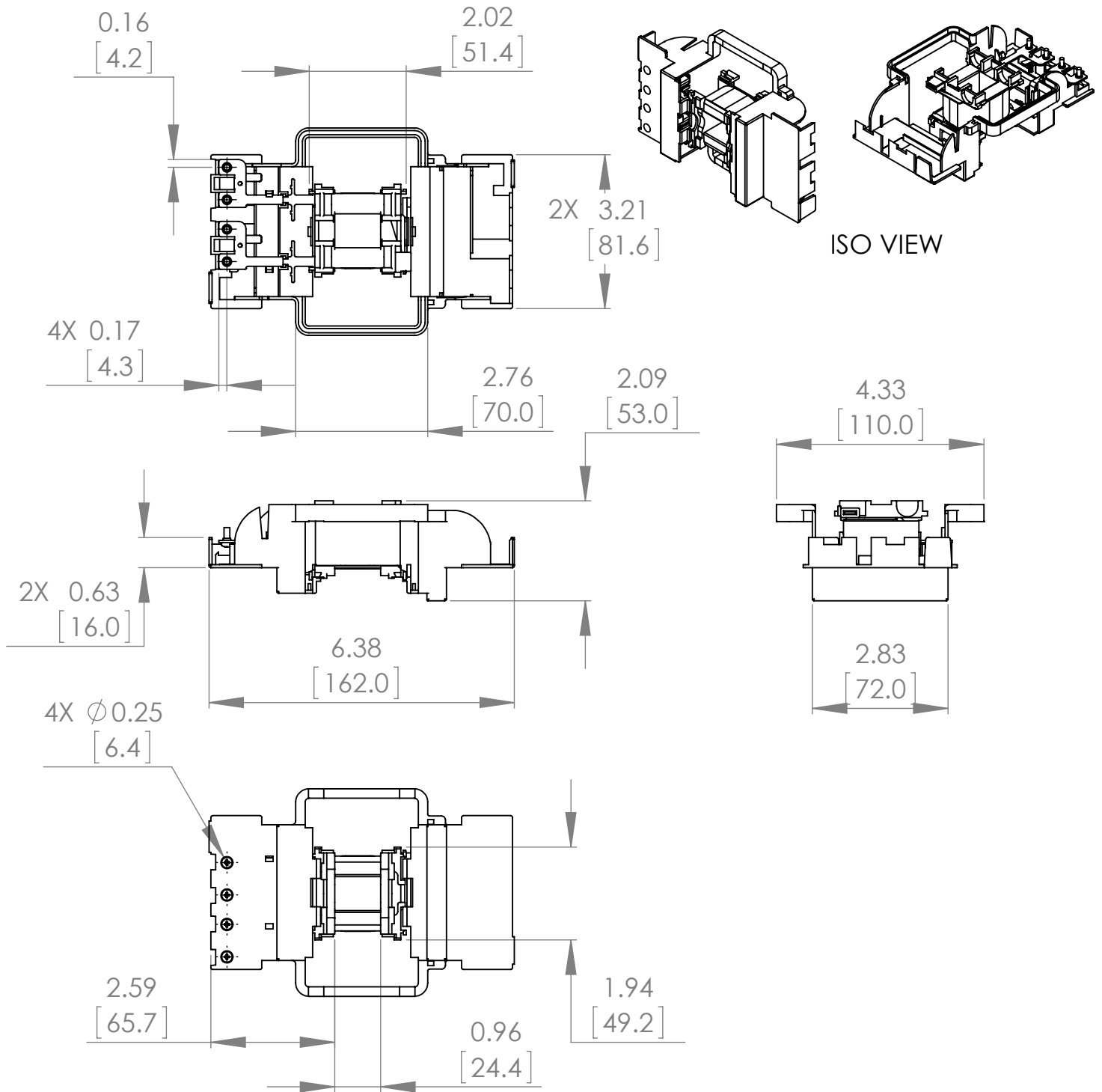
PART NUMBER - BLX1D8S6: BRAH Electric, aftermarket direct replacement coils for Telemecanique LX1D8S6, TeSys D Series, type BLX1D, 500VAC 60Hz, suitable for use with all 3P and 4P LC1D115, LC1D150 contactors

MAGNETIC COILS
PART NO. BLX1D8S6

MANUFACTURER	BRAH Electric
SUB-CATEGORY	Coils
FAMILY	TeSys D
TYPE	BLX1D
TYPE FOR	LC1D115, LC1D150
VOLTAGE	500

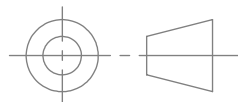
Warranty: All Products sold by BRAH Electric are guaranteed to be free of defect for a period of one year, under the condition that the product has been installed and operated properly. All items proven defective within the one year period will be replaced by BRAH Electric. In the event that we cannot provide a direct replacement, your monies will be refunded in full. We are not responsible for any consequential losses or damages outside of the defective product as well as any replacements or repairs performed by another party without our written authorization from BRAH Electric.

REVISIONS				
ZONE	REV.	DESCRIPTION	DATE	APPROVED



* NOTE: BRAH ELECTRIC COIL BLX1D8S6 IS A DIRECT REPLACEMENT FOR TELEMECANIQUE LX1D8S6, TESYS D SERIES, SUITABLE FOR USE WITH ALL 3P AND 4P LC1D115 AND LC1D150 CONTACTORS

WWW.BRAHELECTRIC.COM, 855-355-2724



THIRD ANGLE PROJECTION

PROPRIETARY AND CONFIDENTIAL

THE INFORMATION CONTAINED IN THIS DRAWING IS THE SOLE PROPERTY OF BRAH ELECTRIC. ANY REPRODUCTION IN PART OR AS A WHOLE WITHOUT THE WRITTEN PERMISSION OF BRAH ELECTRIC IS PROHIBITED.

UNLESS OTHERWISE NOTED

ALL DIMENSIONS ARE IN INCHES
METRIC UNITS ARE DISPLAYED
BENEATH IN [MM.]

MATERIAL

-

FINISH

N/A

DO NOT SCALE DRAWING



MOTOR CONTROLS

SIZE	DWG. NO.	REV.
A	BLX1D8S6	A
SCALE: 1:3	WEIGHT:	SHEET 1 OF 1