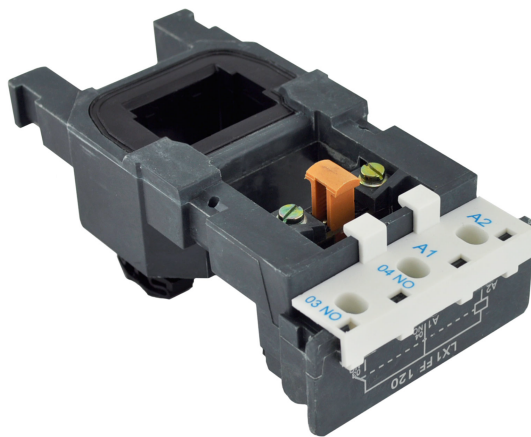


## PRODUCT DATA SHEET



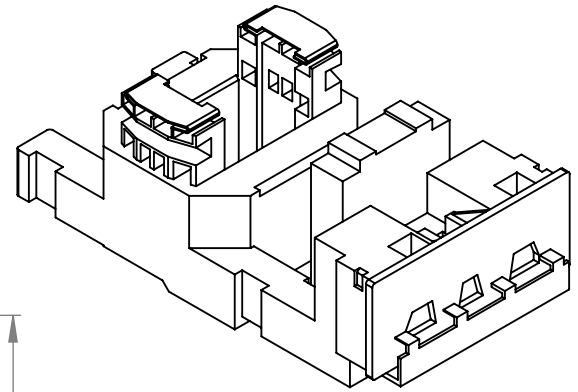
**PART NUMBER - BLX1FF042:** BRAH Electric, aftermarket direct replacement coils for Telemecanique LX1FF042, TeSys F Series, type BLX1F, 42V AC 50Hz, coil suffix code is B5, suitable for use with all 3P and 4P LC1F115, LC1F150, LC2F115, LC2F150 contactors

MAGNETIC COILS  
PART NO. BLX1FF042

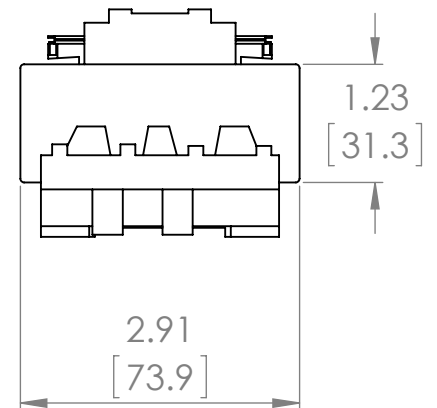
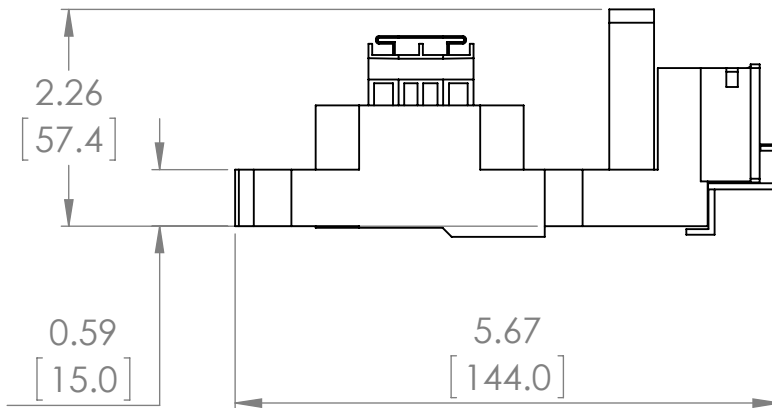
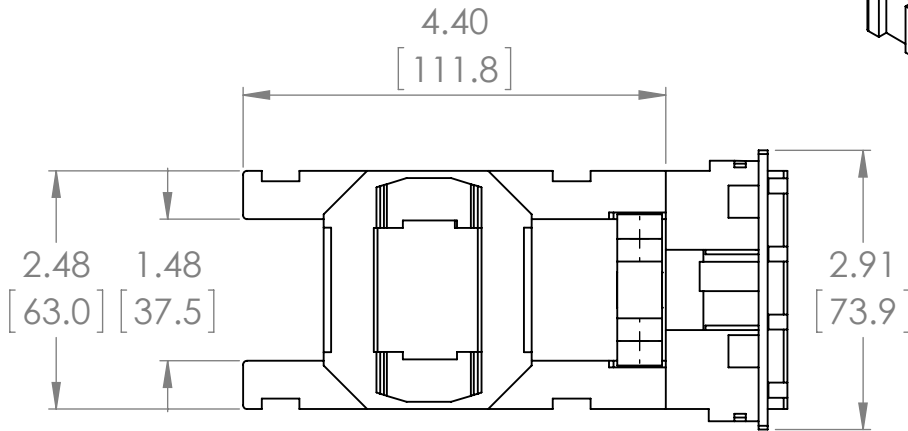
<b>MANUFACTURER</b>	BRAH Electric
<b>SUB-CATEGORY</b>	Coils
<b>FAMILY</b>	TeSys F
<b>TYPE</b>	BLX1F
<b>TYPE FOR</b>	LC1F115, LC1F150, LC2F115, LC2F150
<b>VOLTAGE</b>	42

**Warranty:** All Products sold by BRAH Electric are guaranteed to be free of defect for a period of one year, under the condition that the product has been installed and operated properly. All items proven defective within the one year period will be replaced by BRAH Electric. In the event that we cannot provide a direct replacement, your monies will be refunded in full. We are not responsible for any consequential losses or damages outside of the defective product as well as any replacements or repairs performed by another party without our written authorization from BRAH Electric.

REVISIONS				
ZONE	REV.	DESCRIPTION	DATE	APPROVED



ISO VIEW



\*NOTE: BRAH ELECTRIC COIL BLX1FF042 IS A DIRECT REPLACEMENT FOR TELEMECANIQUE LX1FF042, TESYS F SERIES, SUITABLE FOR USE WITH ALL 3P AND 4P LC1F115, LC1F150, LC2F115, LC2F150 CONTACTORS.

[WWW.BRAHELECTRIC.COM](http://WWW.BRAHELECTRIC.COM), 855-355-2724

 THIRD ANGLE PROJECTION  PROPRIETARY AND CONFIDENTIAL THE INFORMATION CONTAINED IN THIS DRAWING IS THE SOLE PROPERTY OF BRAH ELECTRIC. ANY REPRODUCTION IN PART OR AS A WHOLE WITHOUT THE WRITTEN PERMISSION OF BRAH ELECTRIC IS PROHIBITED.	UNLESS OTHERWISE NOTED ALL DIMENSIONS ARE IN INCHES METRIC UNITS ARE DISPLAYED BENEATH IN [ MM. ]	  MOTOR CONTROLS	
	MATERIAL		
	FINISH	N/A	
	DO NOT SCALE DRAWING		
SIZE <b>A</b>	DWG. NO. <b>BLX1FF042</b>	REV. <b>A</b>	
SCALE: 1:2	WEIGHT:	SHEET 1 OF 1	