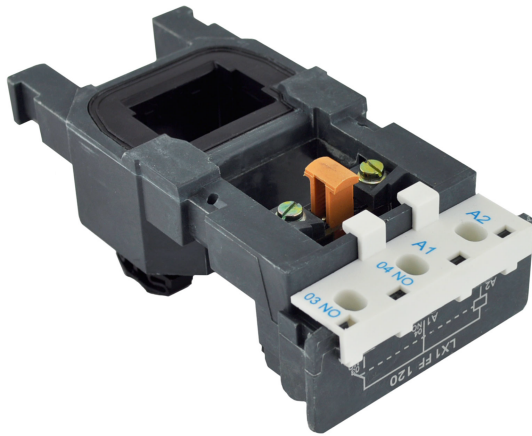


PRODUCT DATA SHEET



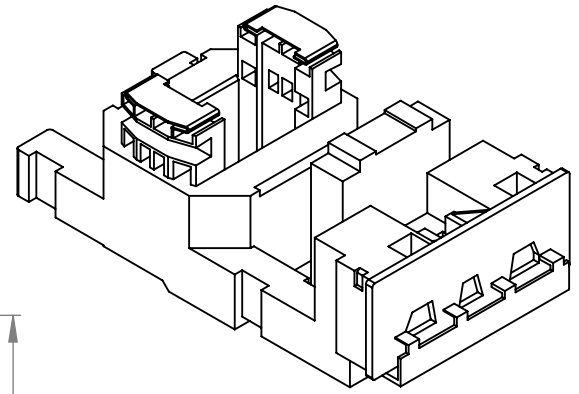
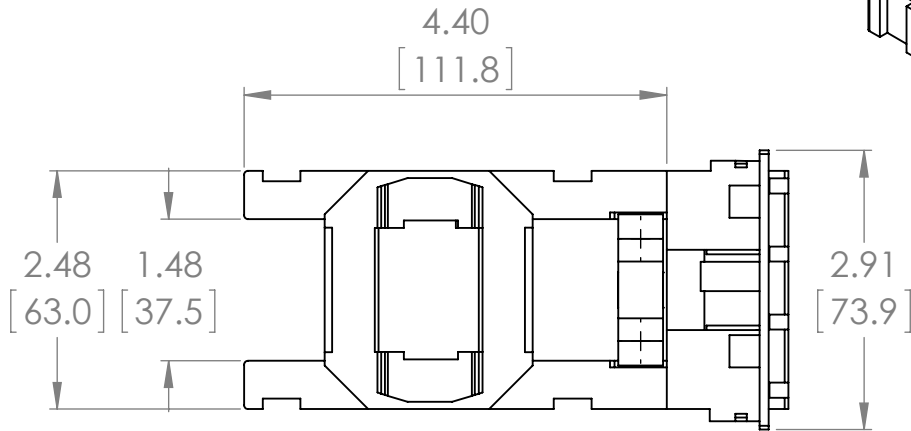
PART NUMBER - BLX1FF095: BRAH Electric, aftermarket direct replacement coils for Telemecanique LX1FF095, TeSys F Series, type BLX1F, 115/120V AC 60Hz, coil suffix code is G6, suitable for use with all 3P and 4P LC1F115, LC1F150, LC2F115, LC2F150 contactors

MAGNETIC COILS
PART NO. BLX1FF095

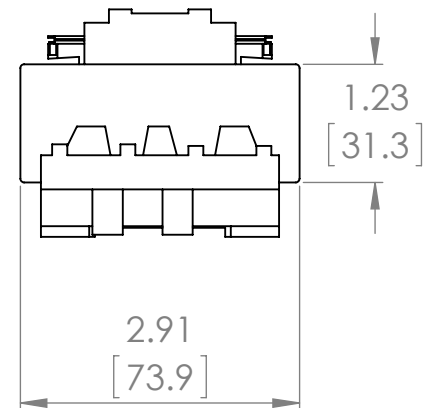
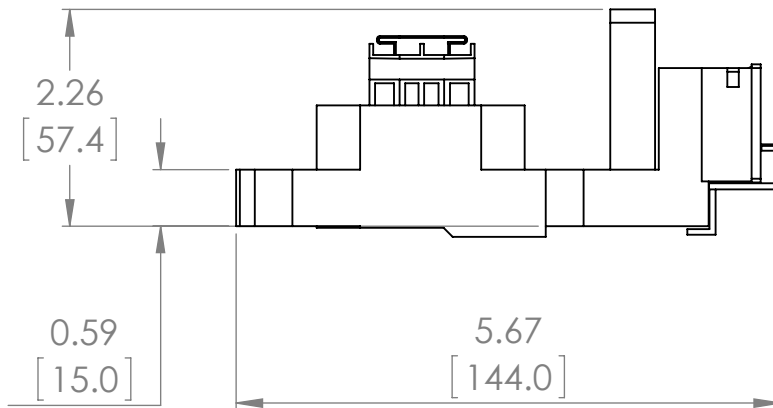
MANUFACTURER	BRAH Electric
SUB-CATEGORY	Coils
FAMILY	TeSys F
TYPE	BLX1F
TYPE FOR	LC1F115, LC1F150, LC2F115, LC2F150
VOLTAGE	120

Warranty: All Products sold by BRAH Electric are guaranteed to be free of defect for a period of one year, under the condition that the product has been installed and operated properly. All items proven defective within the one year period will be replaced by BRAH Electric. In the event that we cannot provide a direct replacement, your monies will be refunded in full. We are not responsible for any consequential losses or damages outside of the defective product as well as any replacements or repairs performed by another party without our written authorization from BRAH Electric.

REVISIONS				
ZONE	REV.	DESCRIPTION	DATE	APPROVED



ISO VIEW



*NOTE: BRAH ELECTRIC COIL BLX1FF095 IS A DIRECT REPLACEMENT FOR TELEMECANIQUE LX1FF095, TESYS F SERIES, SUITABLE FOR USE WITH ALL 3P AND 4P LC1F115, LC1F150, LC2F115, LC2F150 CONTACTORS.

WWW.BRAHELECTRIC.COM, 855-355-2724

 THIRD ANGLE PROJECTION PROPRIETARY AND CONFIDENTIAL THE INFORMATION CONTAINED IN THIS DRAWING IS THE SOLE PROPERTY OF BRAH ELECTRIC. ANY REPRODUCTION IN PART OR AS A WHOLE WITHOUT THE WRITTEN PERMISSION OF BRAH ELECTRIC IS PROHIBITED.	UNLESS OTHERWISE NOTED ALL DIMENSIONS ARE IN INCHES METRIC UNITS ARE DISPLAYED BENEATH IN [MM.]	 BRAH Electric	
	MATERIAL		
	FINISH	N/A	
	DO NOT SCALE DRAWING		
MOTOR CONTROLS		SIZE A DWG. NO. BLX1FF095 SCALE: 1:2 WEIGHT: SHEET 1 OF 1	REV. A