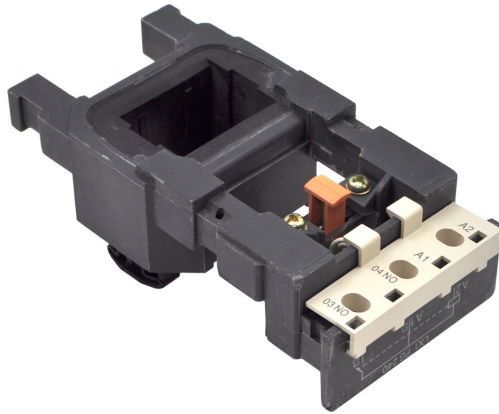


## PRODUCT DATA SHEET



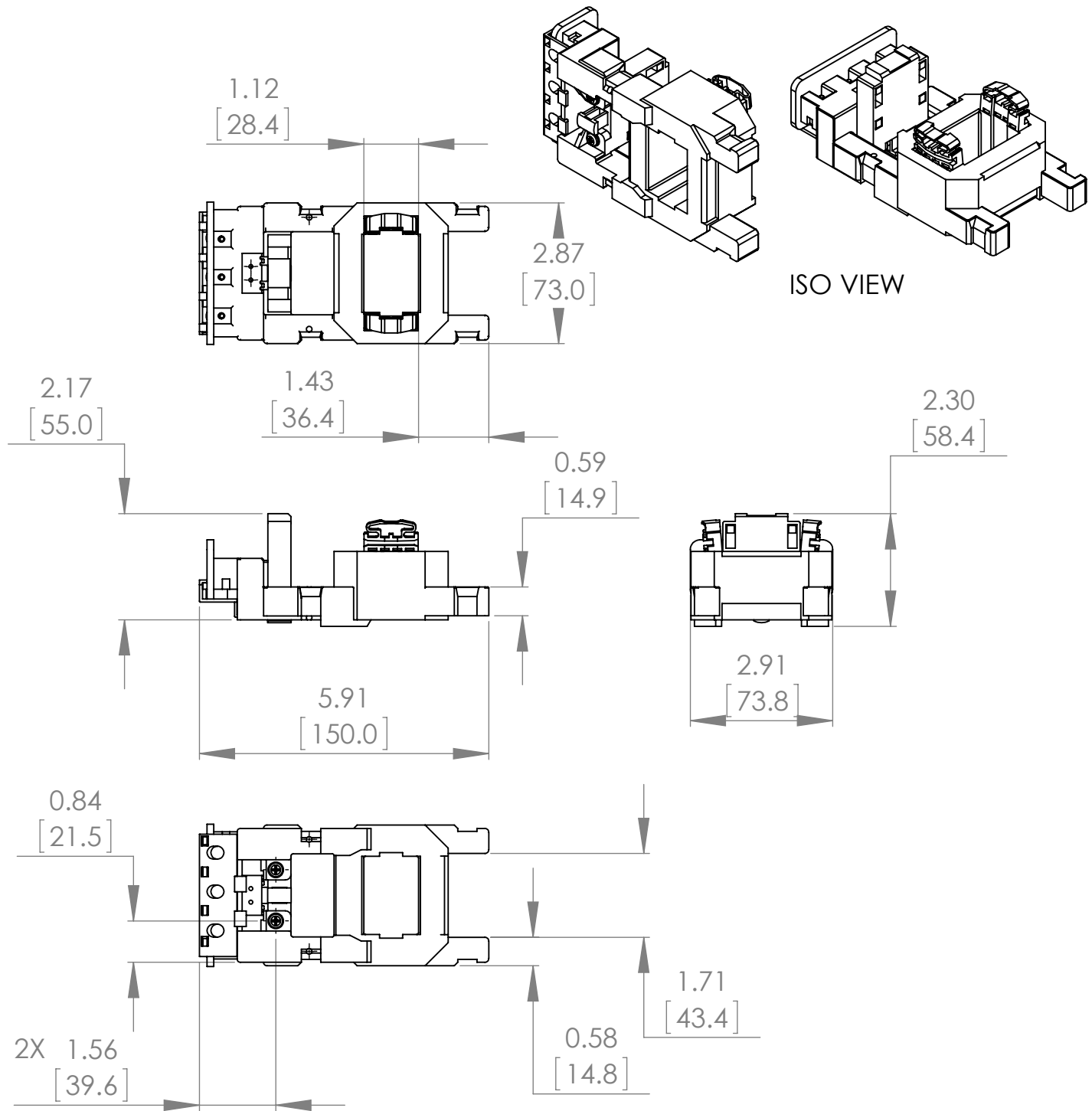
**PART NUMBER - BLX1FG162:** BRAH Electric, aftermarket direct replacement coils for Telemecanique LX1FG162, TeSys F Series, type BLX1F, 200/208VAC 60Hz, coil suffix code is L6, suitable for use with all 3P and 4P LC1F185, LC1F225, LC2F185, LC2F225 contactors

MAGNETIC COILS  
PART NO. BLX1FG162

<b>MANUFACTURER</b>	BRAH Electric
<b>SUB-CATEGORY</b>	Coils
<b>FAMILY</b>	TeSys F
<b>TYPE</b>	BLX1F
<b>TYPE FOR</b>	LC1F185, LC1F225, LC2F185, LC2F225
<b>VOLTAGE</b>	208

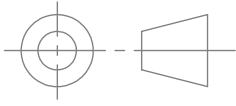

**Warranty:** All Products sold by BRAH Electric are guaranteed to be free of defect for a period of one year, under the condition that the product has been installed and operated properly. All items proven defective within the one year period will be replaced by BRAH Electric. In the event that we cannot provide a direct replacement, your monies will be refunded in full. We are not responsible for any consequential losses or damages outside of the defective product as well as any replacements or repairs performed by another party without our written authorization from BRAH Electric.

REVISIONS				
ZONE	REV.	DESCRIPTION	DATE	APPROVED



\* NOTE: BRAH ELECTRIC COIL BLX1FG162 IS A DIRECT REPLACEMENT FOR TELEMECANIQUE LX1FG162, TESYS F SERIES, SUITABLE FOR USE WITH ALL 3P AND 4P LC1F185, LC1F225, LC2F185, LC2F225 CONTACTORS

[WWW.BRAHELECTRIC.COM](http://WWW.BRAHELECTRIC.COM), 855-355-2724

 <p>THIRD ANGLE PROJECTION</p>	<p>UNLESS OTHERWISE NOTED</p> <p>ALL DIMENSIONS ARE IN INCHES METRIC UNITS ARE DISPLAYED BENEATH IN [ MM. ]</p>		 <p>MOTOR CONTROLS</p>	
<p>PROPRIETARY AND CONFIDENTIAL</p> <p>THE INFORMATION CONTAINED IN THIS DRAWING IS THE SOLE PROPERTY OF BRAH ELECTRIC. ANY REPRODUCTION IN PART OR AS A WHOLE WITHOUT THE WRITTEN PERMISSION OF BRAH ELECTRIC IS PROHIBITED.</p>	MATERIAL	-		
	FINISH	N/A		
	DO NOT SCALE DRAWING			
SIZE A		DWG. NO. BLX1FG162		REV. A
SCALE:1:3		WEIGHT:		SHEET 1 OF 1