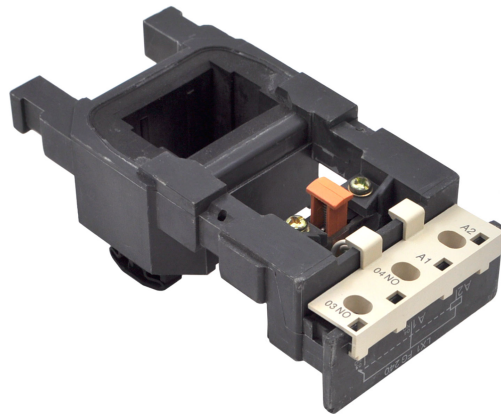


PRODUCT DATA SHEET



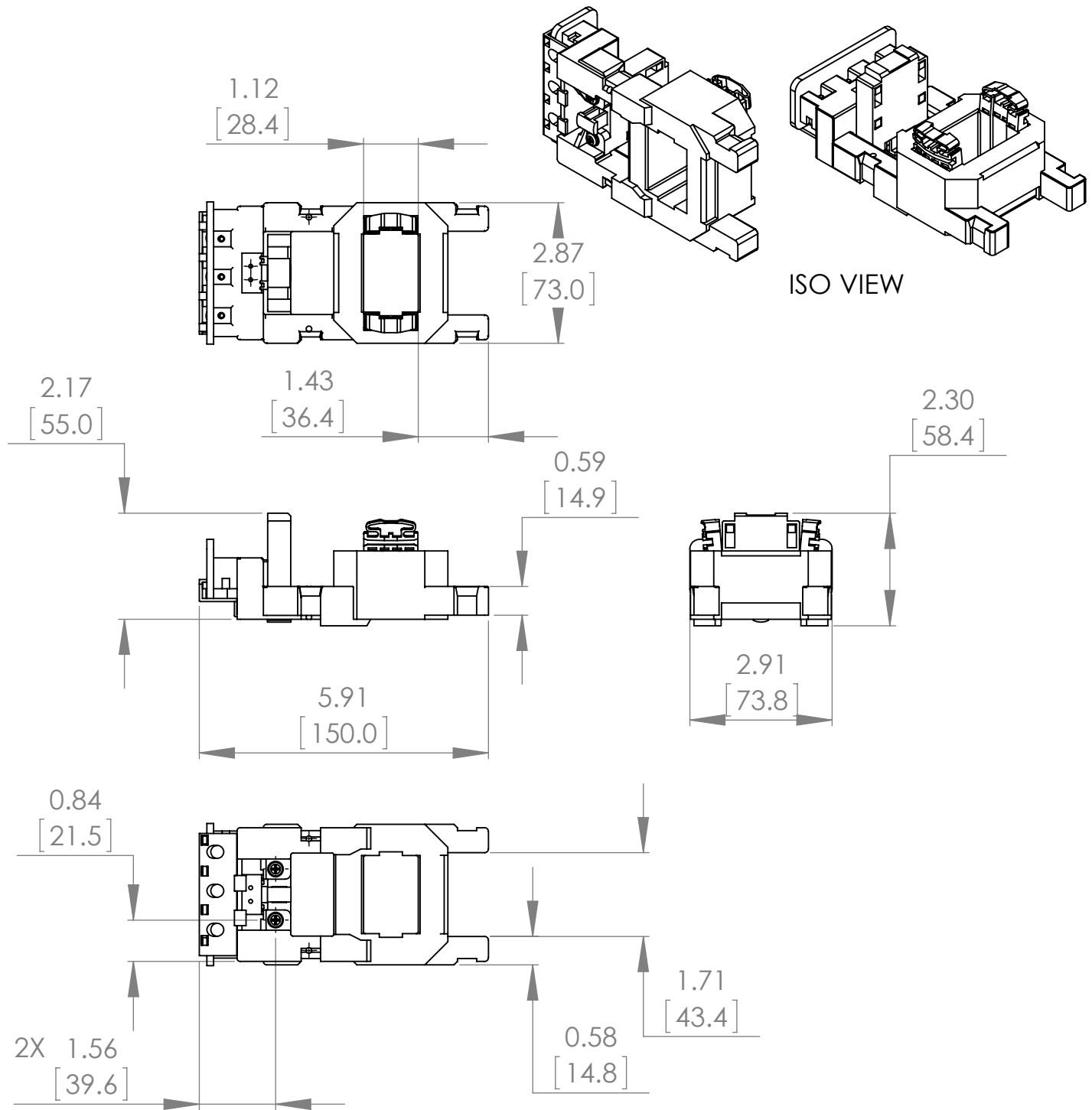
PART NUMBER - BLX1FG360: BRAH Electric, aftermarket direct replacement coils for Telemecanique LX1FG360, TeSys F Series, type BLX1F, 440VAC 60Hz, coil suffix code is R6, suitable for use with all 3P and 4P LC1F185, LC1F225, LC2F185, LC2F225 contactors

MAGNETIC COILS
PART NO. BLX1FG360

MANUFACTURER	BRAH Electric
SUB-CATEGORY	Coils
FAMILY	TeSys F
TYPE	BLX1F
TYPE FOR	LC1F185, LC1F225, LC2F185, LC2F225
VOLTAGE	440

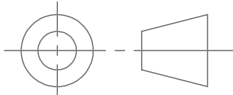

Warranty: All Products sold by BRAH Electric are guaranteed to be free of defect for a period of one year, under the condition that the product has been installed and operated properly. All items proven defective within the one year period will be replaced by BRAH Electric. In the event that we cannot provide a direct replacement, your monies will be refunded in full. We are not responsible for any consequential losses or damages outside of the defective product as well as any replacements or repairs performed by another party without our written authorization from BRAH Electric.

REVISIONS				
ZONE	REV.	DESCRIPTION	DATE	APPROVED



* NOTE: BRAH ELECTRIC COIL BLX1FG360 IS A DIRECT REPLACEMENT FOR TELEMECANIQUE LX1FG360, TESYS F SERIES, SUITABLE FOR USE WITH ALL 3P AND 4P LC1F185, LC1F225, LC2F185, LC2F225 CONTACTORS

WWW.BRAHELECTRIC.COM, 855-355-2724

 <p>THIRD ANGLE PROJECTION</p>	<p>UNLESS OTHERWISE NOTED</p> <p>ALL DIMENSIONS ARE IN INCHES METRIC UNITS ARE DISPLAYED BENEATH IN [MM.]</p>			
<p>PROPRIETARY AND CONFIDENTIAL</p> <p>THE INFORMATION CONTAINED IN THIS DRAWING IS THE SOLE PROPERTY OF BRAH ELECTRIC. ANY REPRODUCTION IN PART OR AS A WHOLE WITHOUT THE WRITTEN PERMISSION OF BRAH ELECTRIC IS PROHIBITED.</p>	<p>MATERIAL</p> <p>-</p>	<p>MOTOR CONTROLS</p>		
<p>FINISH</p> <p>N/A</p>				
<p>DO NOT SCALE DRAWING</p>	<p>SIZE</p> <p>A</p>	<p>DWG. NO.</p> <p>BLX1FG360</p>	<p>REV.</p> <p>A</p>	
	<p>SCALE: 1:3</p>	<p>WEIGHT:</p>	<p>SHEET 1 OF 1</p>	