

PRODUCT DATA SHEET

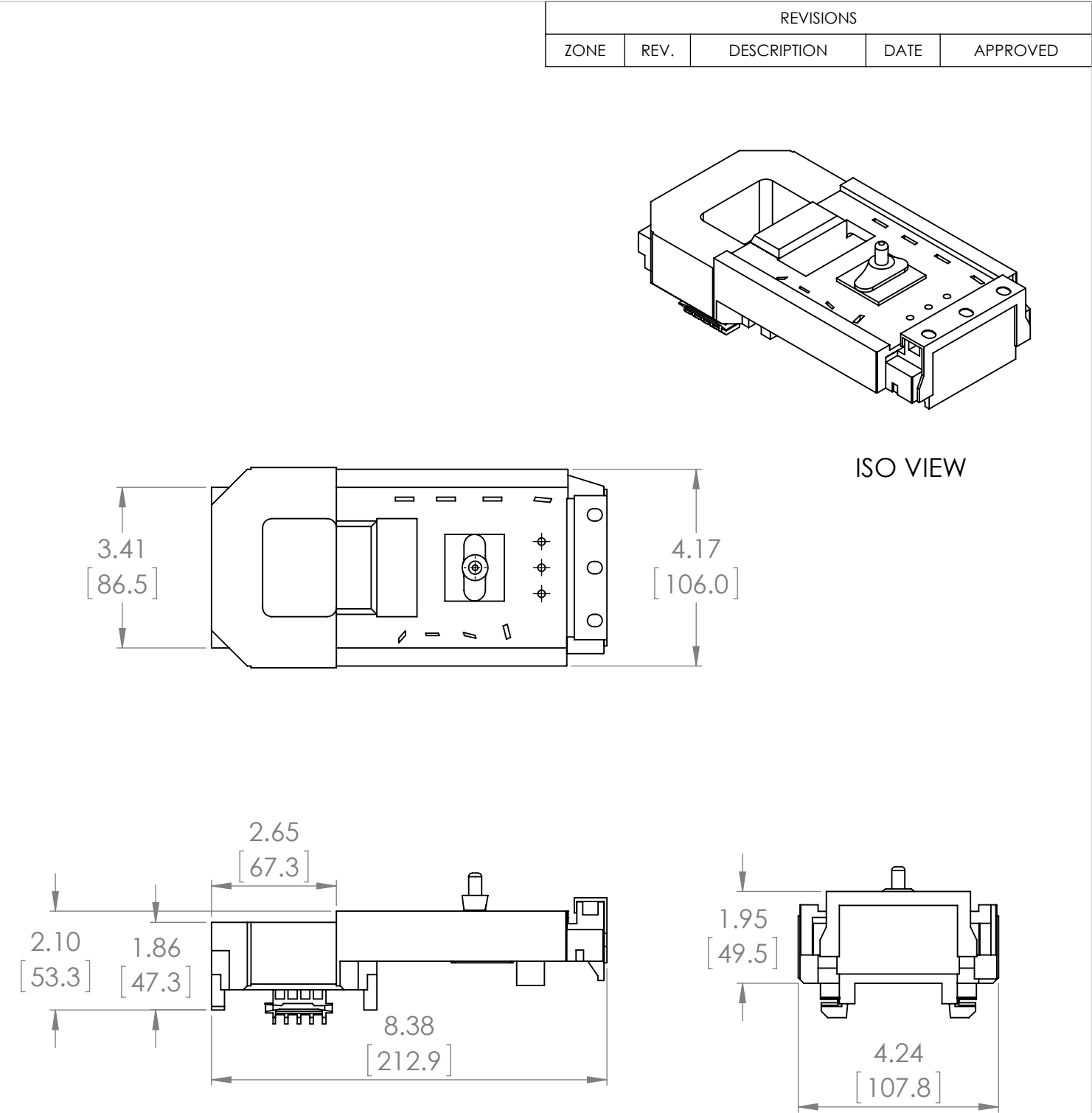


PART NUMBER - BLX1FL240: BRAH Electric, aftermarket direct replacement coils for Telemecanique LX1FL240, TeSys F Series, type BLX1F, 220/240VAC 40-400Hz, coil suffix code M7, suitable for use with all 3P and 4P LC1F630, LC2F630 contactors

MAGNETIC COILS
PART NO. BLX1FL240

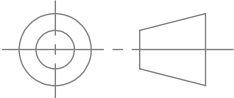

MANUFACTURER	BRAH Electric
SUB-CATEGORY	Coils
FAMILY	TeSys F
TYPE	BLX1F
TYPE FOR	LC1F630, LC2F630
VOLTAGE	240

Warranty: All Products sold by BRAH Electric are guaranteed to be free of defect for a period of one year, under the condition that the product has been installed and operated properly. All items proven defective within the one year period will be replaced by BRAH Electric. In the event that we cannot provide a direct replacement, your monies will be refunded in full. We are not responsible for any consequential losses or damages outside of the defective product as well as any replacements or repairs performed by another party without our written authorization from BRAH Electric.



*NOTE: BRAH ELECTRIC COIL BLX1FL240 IS A DIRECT REPLACEMENT FOR FOR TELEMECANIQUE LX1FL240, TESYS F SERIES, SUITABLE FOR USE WITH ALL 3P AND 4P LC1F630, LC2F630 CONTACTORS

WWW.BRAHELECTRIC.COM, 855-355-2724

 <p>THIRD ANGLE PROJECTION</p>	UNLESS OTHERWISE NOTED ALL DIMENSIONS ARE IN INCHES METRIC UNITS ARE DISPLAYED BENEATH IN [MM.]			
	MATERIAL			
	FINISH		MOTOR CONTROLS	
	DO NOT SCALE DRAWING			
PROPRIETARY AND CONFIDENTIAL THE INFORMATION CONTAINED IN THIS DRAWING IS THE SOLE PROPERTY OF BRAH ELECTRIC. ANY REPRODUCTION IN PART OR AS A WHOLE WITHOUT THE WRITTEN PERMISSION OF BRAH ELECTRIC IS PROHIBITED.		SIZE A	DWG. NO. BLX1FL240	REV. A
		SCALE:1:3	WEIGHT:	SHEET 1 OF 1