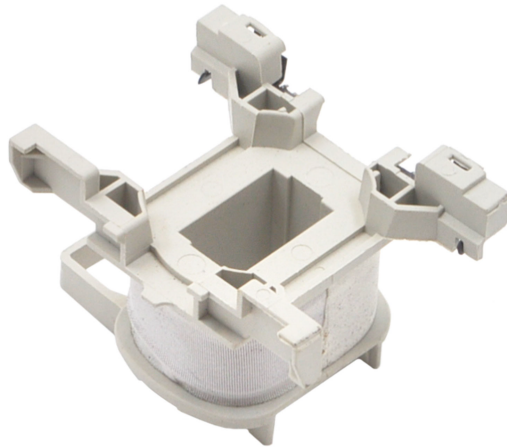


## PRODUCT DATA SHEET



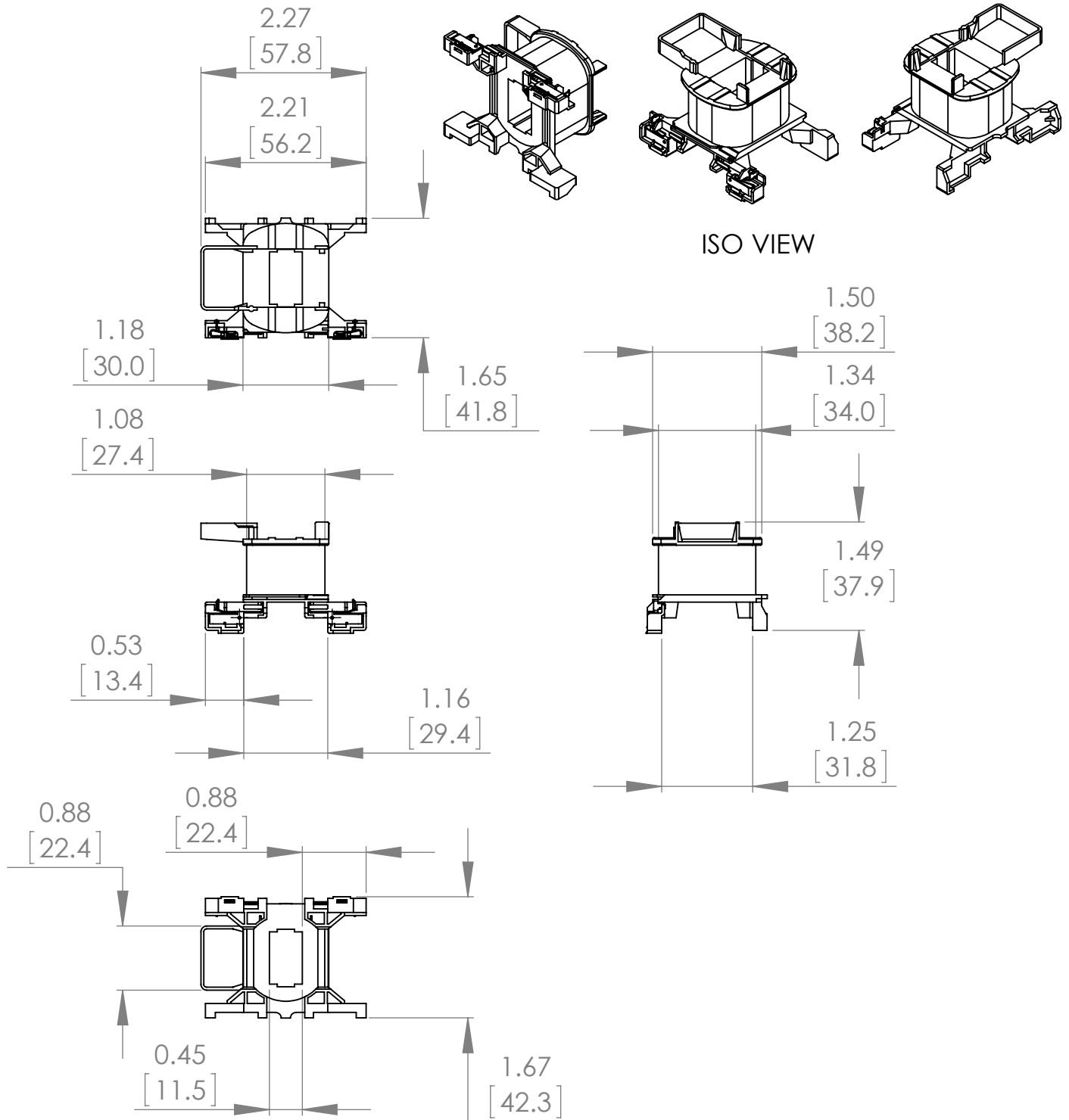
**PART NUMBER - BLXD1M6:** BRAH Electric, aftermarket direct replacement coils for Telemecanique LXD1M6, TeSys D Series, type BLXD1, 220VAC 60Hz, suitable for use with 3P and 4P LC1D09, LC1D12, LC1D18, LC2D09, LC2D12, LC2D18, LC1DT20, LC1DT40 contactors

MAGNETIC COILS  
PART NO. BLXD1M6

<b>MANUFACTURER</b>	BRAH Electric
<b>SUB-CATEGORY</b>	Coils
<b>FAMILY</b>	TeSys D
<b>TYPE</b>	BLXD1
<b>TYPE FOR</b>	LC1D09, LC1D12, LC1D18, LC2D09, LC2D12, LC2D18, LC1DT20, LC1DT40
<b>VOLTAGE</b>	220

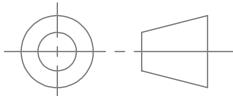

**Warranty:** All Products sold by BRAH Electric are guaranteed to be free of defect for a period of one year, under the condition that the product has been installed and operated properly. All items proven defective within the one year period will be replaced by BRAH Electric. In the event that we cannot provide a direct replacement, your monies will be refunded in full. We are not responsible for any consequential losses or damages outside of the defective product as well as any replacements or repairs performed by another party without our written authorization from BRAH Electric.

REVISIONS				
ZONE	REV.	DESCRIPTION	DATE	APPROVED



\* NOTE: BRAH ELECTRIC COIL BLXD1M6 IS A DIRECT REPLACEMENT FOR TELEMECANIQUE LXD1M6, TESYS D SERIES, SUITABLE FOR USE WITH 3P AND 4P LC1D09, LC1D12, LC1D18, LC2D09, LC2D12, LC2D18, LC1DT20, LC1DT40 CONTACTORS

[WWW.BRAHELECTRIC.COM](http://WWW.BRAHELECTRIC.COM), 855-355-2724

 <p>THIRD ANGLE PROJECTION</p>	<p>UNLESS OTHERWISE NOTED</p> <p>ALL DIMENSIONS ARE IN INCHES METRIC UNITS ARE DISPLAYED BENEATH IN [ MM. ]</p>			
<p>PROPRIETARY AND CONFIDENTIAL</p> <p>THE INFORMATION CONTAINED IN THIS DRAWING IS THE SOLE PROPERTY OF BRAH ELECTRIC. ANY REPRODUCTION IN PART OR AS A WHOLE WITHOUT THE WRITTEN PERMISSION OF BRAH ELECTRIC IS PROHIBITED.</p>	MATERIAL	-		MOTOR CONTROLS
	FINISH	N/A		
	DO NOT SCALE DRAWING			
	SIZE A	DWG. NO.	BLXD1M6	REV. A
SCALE:1:2		WEIGHT:	SHEET 1 OF 1	