



PRODUCT DATA SHEET

CONTACT US

855.355.2724

Email - sales@brahelectric.com

www.brahelectric.com



FUSEBLOCK603

BUS PLUG part known as the load block or fuse block. This is a direct preplacement for GE style bus plugs and will fit All Spectra series, Spectra low amp, Armor Clad and Flex-A plug Bus Plugs.

Product Specifications

Description	Specs
Max Volts	600V
Continuous Current	30A
No. of Phases	3
No. of Poles	3
Max HP	20 HP

Mechanical Data:

Molded Plastic Base

Type: Load Block for use in GE OEM Bus Plugs

NOTE: This load block can be used in all BRAH Electric Bus Plugs.

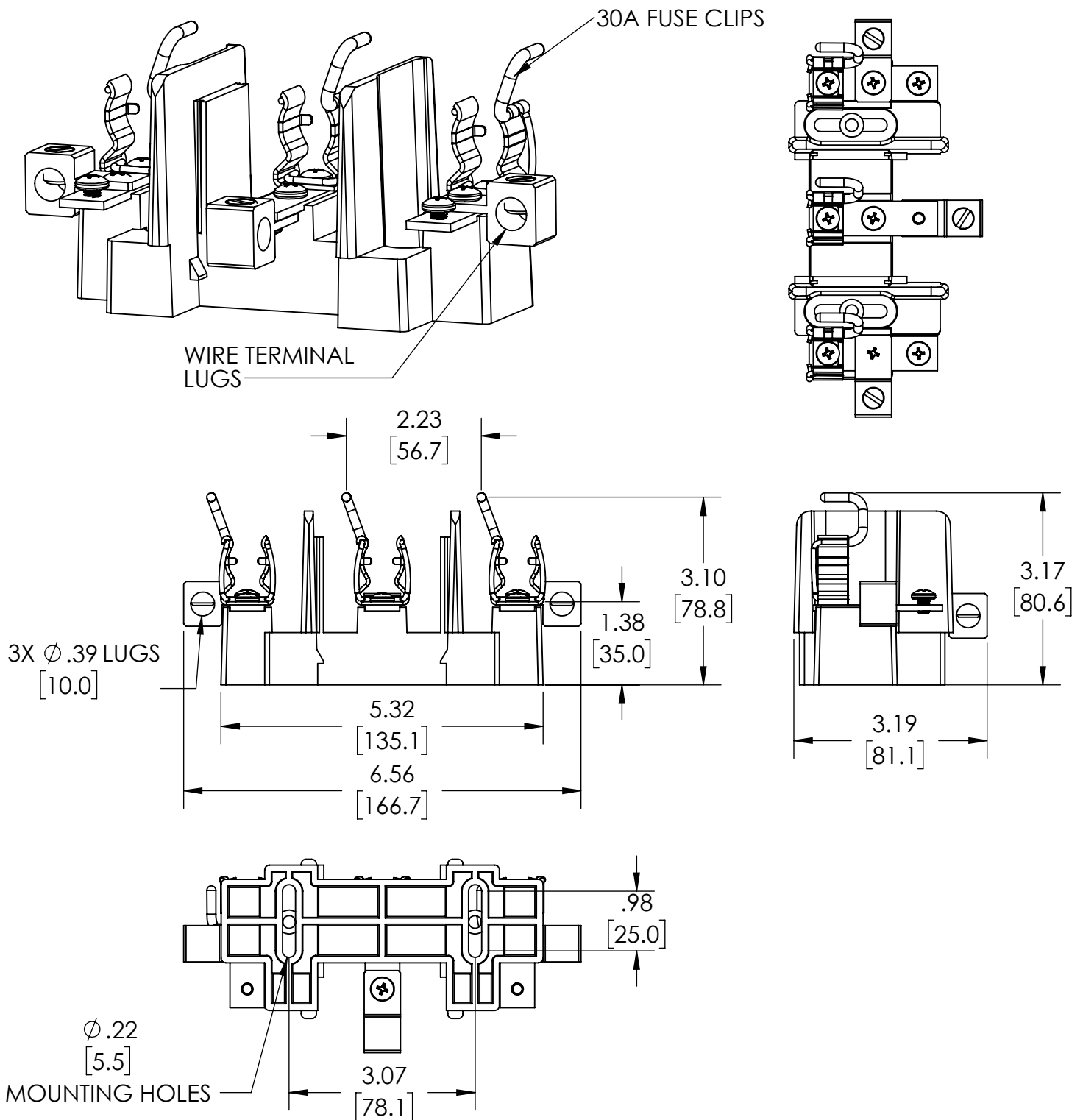
Other Configurations include:

BRAH Part #	GE, OEM part #	VOLTAGE	AMPS	Horse Power
FUSEBLOCK203	N/A	240V	30A	7.5 HP
FUSEBLOCK603	N/A	600V	30A	20 HP
FUSEBLOCK206	N/A	240V	60A	15 HP
FUSEBLOCK606	N/A	600V	60A	50 HP
FUSEBLOCK210	N/A	240V	100A	30 HP
FUSEBLOCK610	N/A	600V	100A	75 HP

Warranty: All Products sold by BRAH Electric are guaranteed to be free of defect for a period of two years, under the condition that the product has been installed and operated properly. All items proven defective within the two year period will be replaced by BRAH Electric. We are not responsible for any consequential losses or damages outside of defective product as well as any replacements or repairs performed by another party without a written authorization from BRAH Electric.

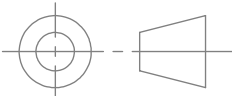

PRODUCT DIMENSIONS

REVISIONS				
ZONE	REV.	DESCRIPTION	DATE	APPROVED



WWW.BRAHELECTRIC.COM, 855-355-2724

*NOTE: BRAH Electric , Bus plug part known as the load block or fuse block. This is a direct replacement for GE style bus plugs and will fit All Spectra series, Spectra low amp, Armor Clad and Flex-A plug Bus Plugs, substitute for OEM General Electric, engineered to operate on both 240 volt and 600 volt systems, 3 phase, 600 volt, 30 amp maximum.

 <p>THIRD ANGLE PROJECTION</p>	<p>UNLESS OTHERWISE NOTED</p> <p>ALL DIMENSIONS ARE IN INCHES METRIC UNITS ARE DISPLAYED BENEATH IN [MM.]</p>											
<p>PROPRIETARY AND CONFIDENTIAL</p> <p>THE INFORMATION CONTAINED IN THIS DRAWING IS THE SOLE PROPERTY OF BRAH ELECTRIC. ANY REPRODUCTION IN PART OR AS A WHOLE WITHOUT THE WRITTEN PERMISSION OF BRAH ELECTRIC IS PROHIBITED.</p>	<p>MATERIAL</p> <p>MOLDED PLASTIC BASE</p>	<p>BUS PLUG LOAD SIDE FUSE BLOCK,30Amp</p>										
	<p>FINISH</p>											
	<p>DO NOT SCALE DRAWING</p>											
	<table><tr><td>SIZE</td><td>DWG. NO.</td><td>FUSEBLOCK603</td><td>REV.</td></tr><tr><td>A</td><td></td><td></td><td>A</td></tr><tr><td colspan="2">SCALE:1:5</td><td>WEIGHT:</td><td>SHEET 1 OF 1</td></tr></table>		SIZE	DWG. NO.	FUSEBLOCK603	REV.	A			A	SCALE:1:5	
SIZE	DWG. NO.	FUSEBLOCK603	REV.									
A			A									
SCALE:1:5		WEIGHT:	SHEET 1 OF 1									