



## PRODUCT DATA SHEET

CONTACT US

855.355.2724

Email - [sales@brahelectric.com](mailto:sales@brahelectric.com)

[www.brahelectric.com](http://www.brahelectric.com)



### **FUSEBLOCK606**

BUS PLUG part known as the load block or fuse block. This is a direct replacement for GE style bus plugs and will fit All Spectra series, Spectra low amp, Armor Clad and Flex-A plug Bus Plugs.

### **Product Specifications**

Description	Specs
Max Volts	600V
Continuous Current	60A
No. of Phases	3
No. of Poles	3
Max HP	50 HP

### **Mechanical Data:**

#### **Molded Plastic Base**

**Type:** Load Block for use in GE OEM Bus Plugs

**NOTE:** This load block can be used in all BRAH Electric Bus Plugs.

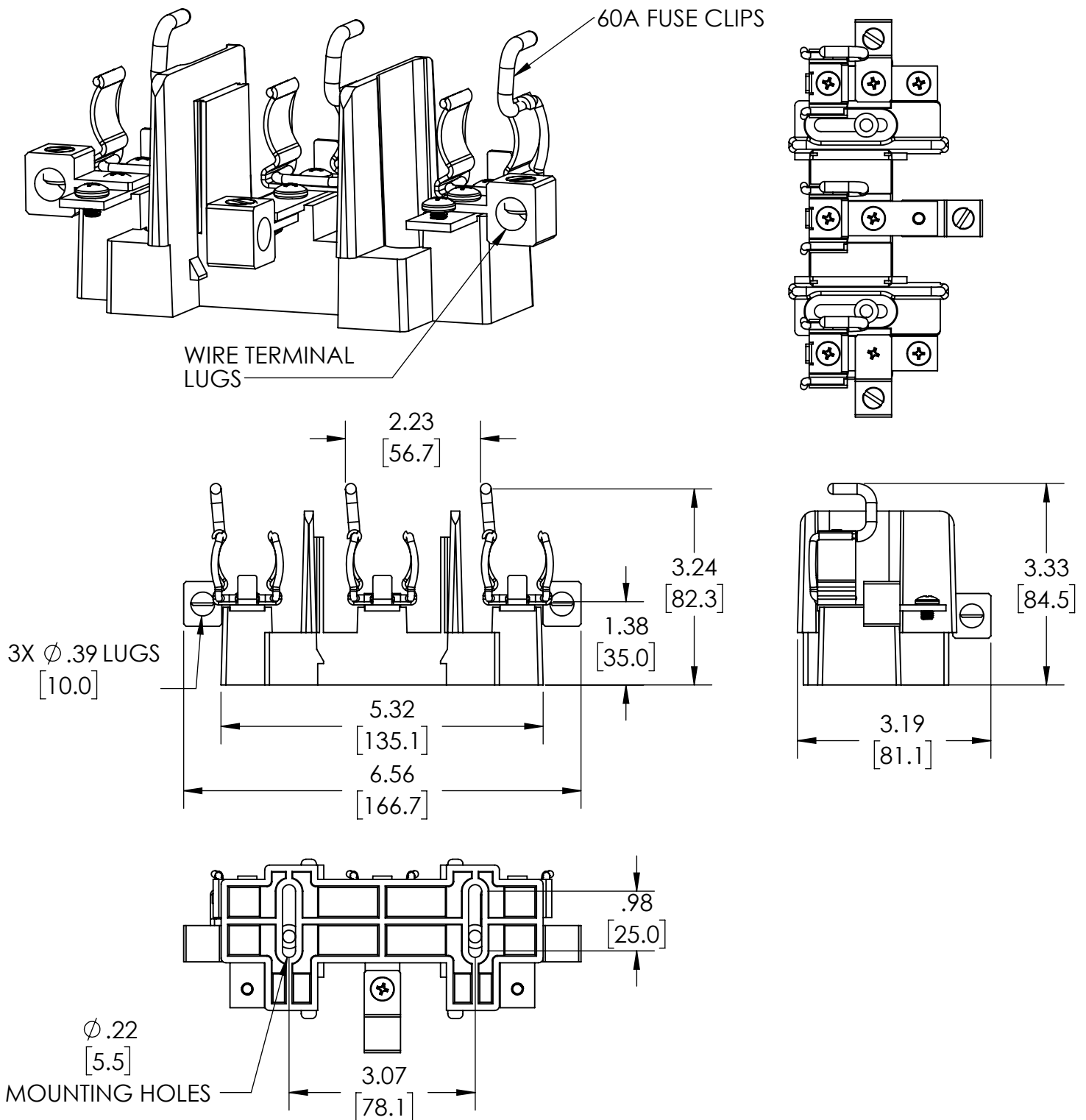
### **Other Configurations include:**

BRAH Part #	GE, OEM part #	VOLTAGE	AMPS	Horse Power
FUSEBLOCK203	N/A	240V	30A	7.5 HP
FUSEBLOCK603	N/A	600V	30A	20 HP
FUSEBLOCK206	N/A	240V	60A	15 HP
FUSEBLOCK606	N/A	600V	60A	50 HP
FUSEBLOCK210	N/A	240V	100A	30 HP
FUSEBLOCK610	N/A	600V	100A	75 HP

**Warranty:** All Products sold by BRAH Electric are guaranteed to be free of defect for a period of two years, under the condition that the product has been installed and operated properly. All items proven defective within the two year period will be replaced by BRAH Electric. We are not responsible for any consequential losses or damages outside of defective product as well as any replacements or repairs performed by another party without a written authorization from BRAH Electric.

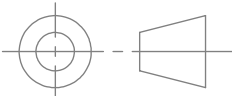

# PRODUCT DIMENSIONS

REVISIONS				
ZONE	REV.	DESCRIPTION	DATE	APPROVED



[WWW.BRAHELECTRIC.COM](http://WWW.BRAHELECTRIC.COM), 855-355-2724

\*NOTE: BRAH Electric , Bus plug part known as the load block or fuse block. This is a direct replacement for GE style bus plugs and will fit All Spectra series, Spectra low amp, Armor Clad and Flex-A plug Bus Plugs, substitute for OEM General Electric, engineered to operate on both 240 volt and 600 volt systems, 3 phase, 600 volt, 60 amp maximum.

 THIRD ANGLE PROJECTION	UNLESS OTHERWISE NOTED  ALL DIMENSIONS ARE IN INCHES METRIC UNITS ARE DISPLAYED BENEATH IN [ MM. ]				
	MATERIAL MOLDED PLASTIC BASE		BUS PLUG LOAD SIDE FUSE BLOCK,60Amp		
FINISH					
PROPRIETARY AND CONFIDENTIAL  THE INFORMATION CONTAINED IN THIS DRAWING IS THE SOLE PROPERTY OF BRAH ELECTRIC. ANY REPRODUCTION IN PART OR AS A WHOLE WITHOUT THE WRITTEN PERMISSION OF BRAH ELECTRIC IS PROHIBITED.	DO NOT SCALE DRAWING		SIZE <b>A</b>	DWG. NO.  FUSEBLOCK606	REV. <b>A</b>
			SCALE:1:5	WEIGHT:	SHEET 1 OF 1