



CONTACT US

855.355.2724

E-Mail: sales@brahelectric.com

www.brahelectric.com

PRODUCT DATA SHEET



MCC PARTS

PART NO. MCCSTABS-CH-F2100-400A

PART NUMBER – MCCSTABS-CH-F2100-400A

MCCSTABS-CH-F2100-400A, type F2100, motor control part, mcc stab assemblies, rated for 400A 600VAC service, complete with cable connectors, suitable for use with F2100, Five Star, 2100 & Advantage series MCC buckets and motor control centers

PRODUCT SPECIFICATIONS

Manufacturer	BRAH Electric
Sub-Category	Stab Kits
Family	Five Star
Type	F2100
OEM Manufacturer	Cutler Hammer
OEM Part No.	4700A97G03
Amperage Max	400A

Warranty: All Products sold by BRAH Electric are guaranteed to be free of defect for a period of two years, under the condition that the product has been installed and operated properly. All items proven defective within the one year period will be replaced by BRAH Electric. In the event that we cannot provide a direct replacement, your monies will be refunded in full. We are not responsible for any consequential losses or damages outside of the defective product as well as any replacements or repairs performed by another party without our written authorization from BRAH Electric.

4

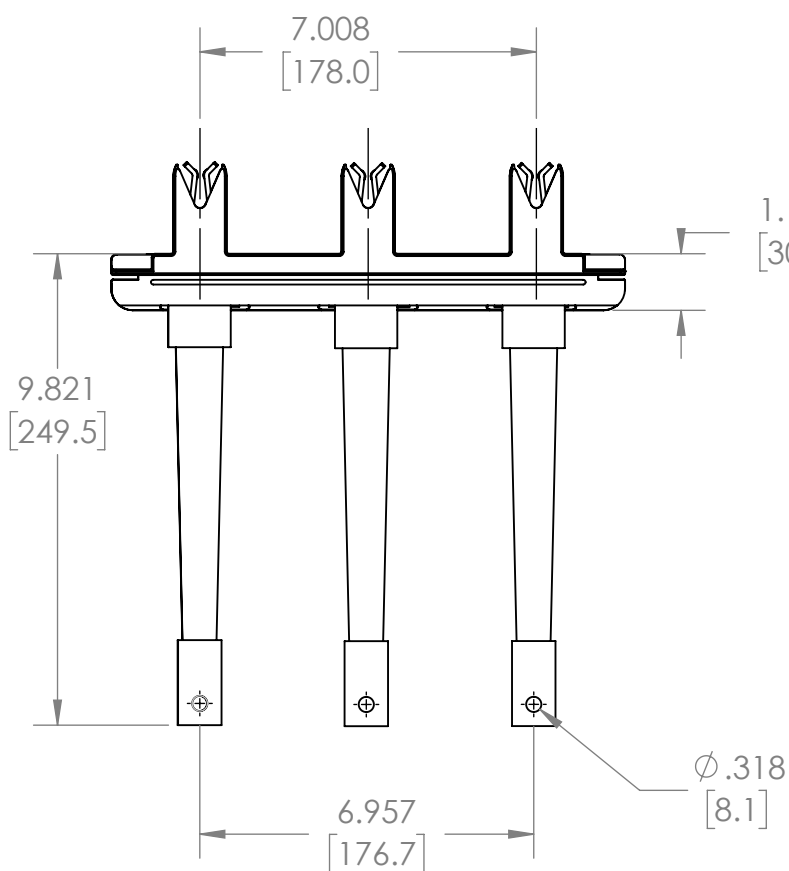
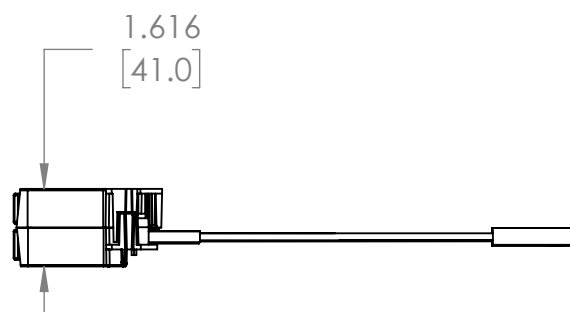
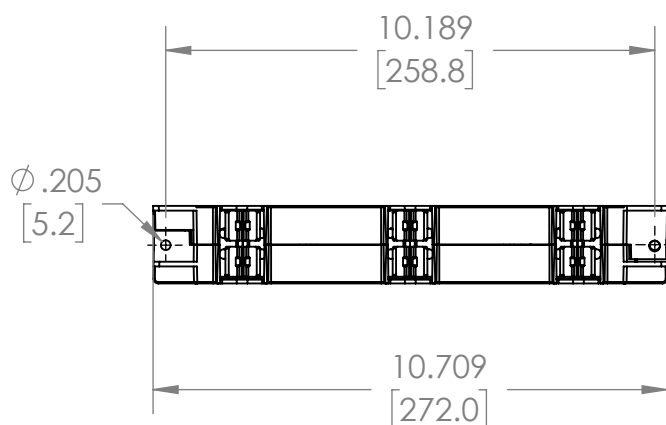
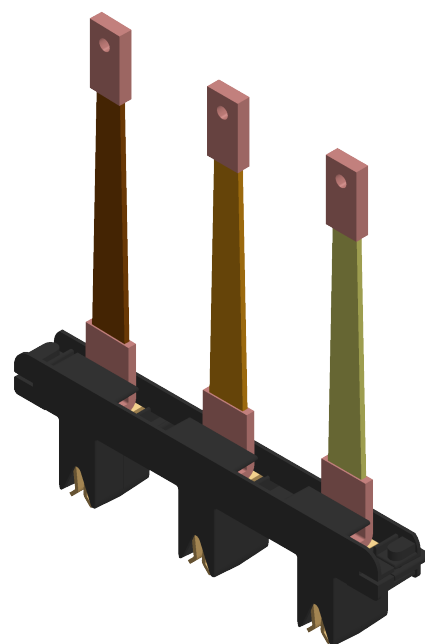
3

2

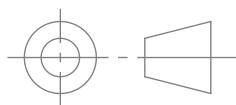
1

REVISIONS

ZONE	REV.	DESCRIPTION	DATE	APPROVED
------	------	-------------	------	----------

1.179
[30.0]

WWW.BRAHELECTRIC.COM, 855-355-2724



THIRD ANGLE PROJECTION

PROPRIETARY AND CONFIDENTIAL
THE INFORMATION CONTAINED IN THIS
DRAWING IS THE SOLE PROPERTY OF
BRAH ELECTRIC. ANY REPRODUCTION
IN PART OR AS A WHOLE WITHOUT THE
WRITTEN PERMISSION OF BRAH ELECTRIC
IS PROHIBITED.

DO NOT SCALE DRAWING

UNLESS OTHERWISE NOTED

ALL DIMENSIONS ARE IN INCHES
METRIC UNITS ARE DISPLAYED
BENEATH IN [MM.]

GENERAL TOLERANCE
ASME Y14.5M-1994

MATERIAL
Copper with Silver plating

FINISH
N/A

DRAWN
MHENRY

DATE
3/16/2024



MCC Stab Assembly

SIZE
A

DWG. NO.
F2100 450A

REV.
A

SCALE:1:4

WEIGHT: 3.2 LBS

SHEET 1 OF 1

4

3

2

1