



CONTACT US @ 855-355-2724

E-Mail: Sales@brahelectric.com

www.Brahelectric.com

PRODUCT DATA SHEET



PART NUMBER – PFA100GK: BRAH Electric direct replacement for Square D, I-Line, ground kits, rated for 100A 600V max, suitable for use with type PFA fusible bus plug switches

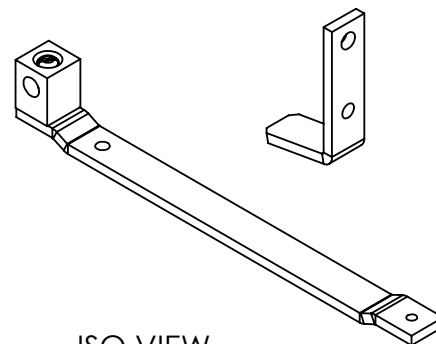
Bus Plug Accessories
PART NO. PFA100GK

PRODUCT SPECIFICATIONS

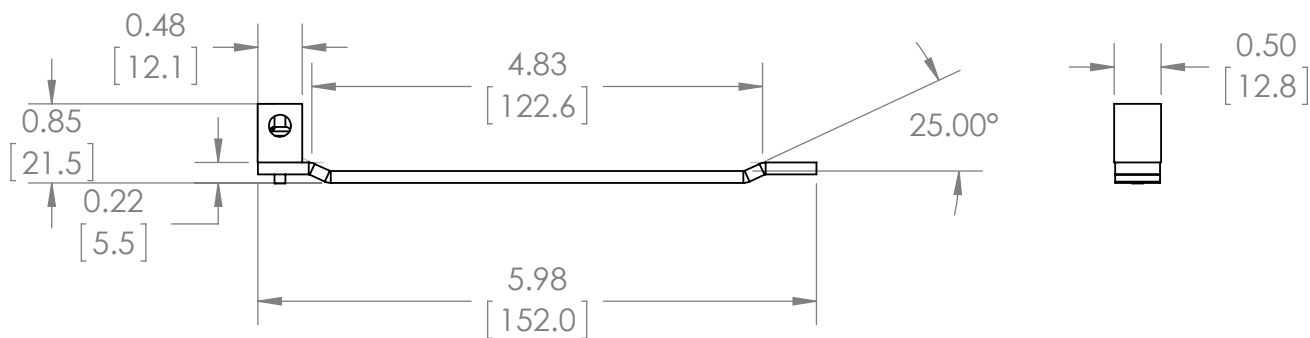
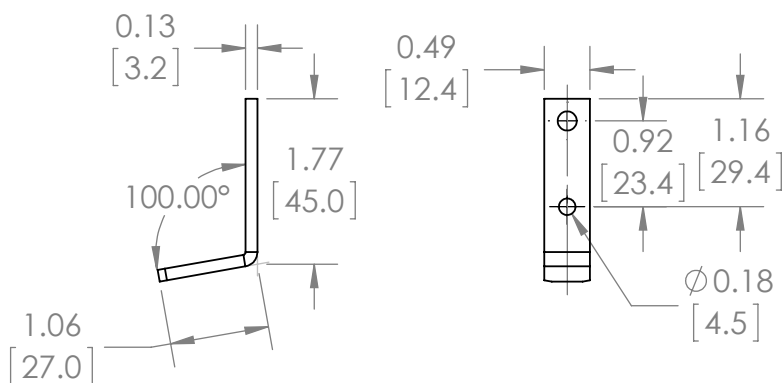
Manufacturer	BRAH Electric
Sub-Category	Ground Kits
Family	I-Lines
Type	PFA
BUS Plug For	PFA
Voltage	600
Amperage	100

Warranty: All Products sold by BRAH Electric are guaranteed to be free of defect for a period of one year, under the condition that the product has been installed and operated properly. All items proven defective within the one year period will be replaced by BRAH Electric. In the event that we cannot provide a direct replacement, your monies will be refunded in full. We are not responsible for any consequential losses or damages outside of the defective product as well as any replacements or repairs performed by another party without our written authorization from BRAH Electric.

REVISIONS				
ZONE	REV.	DESCRIPTION	DATE	APPROVED

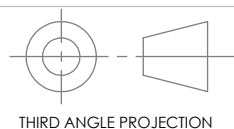


ISO VIEW



WWW.BRAHELECTRIC.COM, 855-355-2724

*NOTE: BRAH ELECTRIC BUS PLUG ACCESSORIES PFA100GK IS AN AFTERMARKET DIRECT REPLACEMENT FOR SQUARE D, I-LINE, GROUND KITS, RATED FOR 100A 600V MAX, SUITABLE FOR USE WITH TYPE PFA FUSIBLE BUS PLUG SWITCHES



THIRD ANGLE PROJECTION

PROPRIETARY AND CONFIDENTIAL

THE INFORMATION CONTAINED IN THIS DRAWING IS THE SOLE PROPERTY OF BRAH ELECTRIC. ANY REPRODUCTION IN PART OR AS A WHOLE WITHOUT THE WRITTEN PERMISSION OF BRAH ELECTRIC IS PROHIBITED.

UNLESS OTHERWISE NOTED

ALL DIMENSIONS ARE IN INCHES
METRIC UNITS ARE DISPLAYED
BENEATH IN [MM.]

MATERIAL

-

FINISH

N/A

DO NOT SCALE DRAWING



BUS PLUG ACCESSORIES

SIZE	DWG. NO.	REV.
A	PFA100GK	A
SCALE: 1:2	WEIGHT: 3.2 LBS	SHEET 1 OF 1