



CONTACT US @ 855-355-2724

E-Mail: Sales@brahelectric.com

www.Brahelectric.com

PRODUCT DATA SHEET



PART NUMBER – SBCAP: BRAH Electric, bus plug parts, aftermarket direct replacement stab insulator cap for General Electric Spectra Series type SB bus plugs

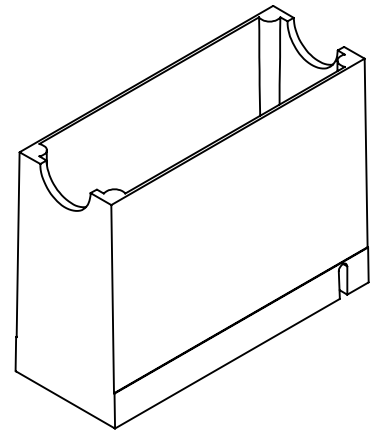
Bus Plug Accessories
PART NO. SBCAP

PRODUCT SPECIFICATIONS

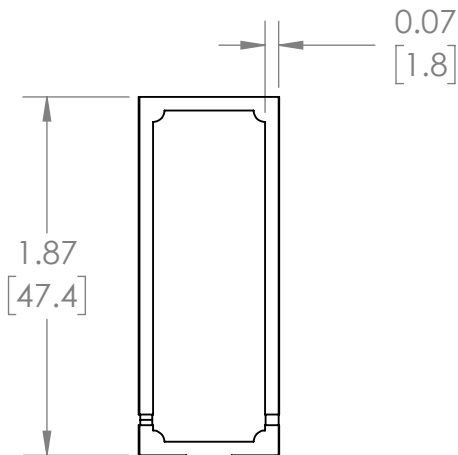
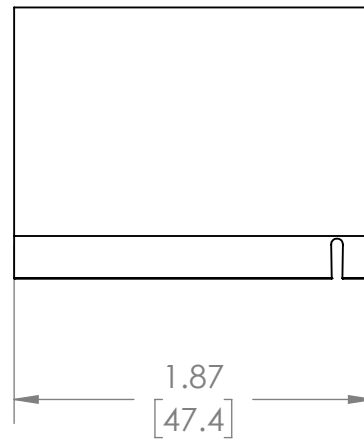
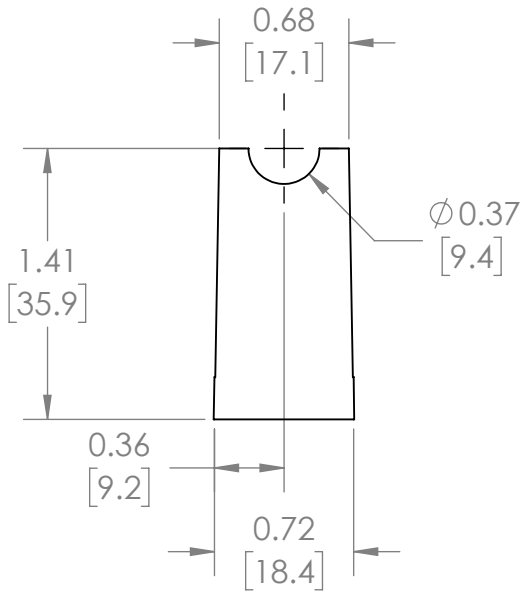
Manufacturer	BRAH Electric
Sub-Category	BUS Plug Parts
Family	BRAH-Bus Plugs
Type	SB
Group	Bus Plug Parts
Type For	SB

Warranty: All Products sold by BRAH Electric are guaranteed to be free of defect for a period of one year, under the condition that the product has been installed and operated properly. All items proven defective within the one year period will be replaced by BRAH Electric. In the event that we cannot provide a direct replacement, your monies will be refunded in full. We are not responsible for any consequential losses or damages outside of the defective product as well as any replacements or repairs performed by another party without our written authorization from BRAH Electric.

REVISIONS				
ZONE	REV.	DESCRIPTION	DATE	APPROVED

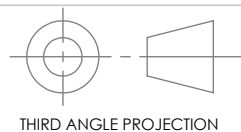


ISO VIEW



WWW.BRAHELECTRIC.COM, 855-355-2724

*NOTE: BRAH ELECTRIC BUS PLUG ACCESORIES AFTERMARKET DIRECT REPLACEMENT STAB INSULATOR CAP FOR GENERAL ELECTRIC SPECTRA SERIES TYPE SB BUS PLUGS



PROPRIETARY AND CONFIDENTIAL
 THE INFORMATION CONTAINED IN THIS DRAWING IS THE SOLE PROPERTY OF BRAH ELECTRIC. ANY REPRODUCTION IN PART OR AS A WHOLE WITHOUT THE WRITTEN PERMISSION OF BRAH ELECTRIC IS PROHIBITED.

UNLESS OTHERWISE NOTED
 ALL DIMENSIONS ARE IN INCHES
 METRIC UNITS ARE DISPLAYED
 BENEATH IN [MM.]

MATERIAL -
 FINISH N/A
 DO NOT SCALE DRAWING



BUS PLUG ACCESORIES

SIZE A	DWG. NO. SBCAP	REV. A
SCALE:1:1	WEIGHT: 3.2 LBS	SHEET 1 OF 1