



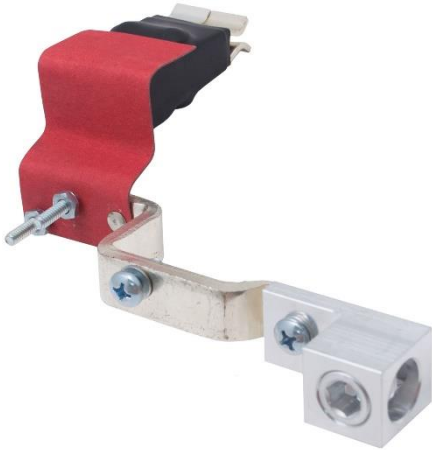
CONTACT US @ 855-355-2724

E-Mail: [Sales@brahelectric.com](mailto:Sales@brahelectric.com)

[www.Brahelectric.com](http://www.Brahelectric.com)

## PRODUCT DATA SHEET

---



### BUS PLUGS

Picture is for reference only,  
Actual Kit may vary slightly

### **PART NUMBER- UV200N:**

BRAH Electric bus plug neutral kit assembly, rated for 200 amp 600 volt maximum, neutral designed and engineered as substitute for OEM ITE / Siemens XL-Universal Series bus plug type UV, works with all vintages of the Universal UV bus plug, neutral can be added to 200 amp bus plug only, neutral kit for converting or adding 4th wire neutral to three phase bus plugs, specified for both 240 volt and 600 volt bus plugs.

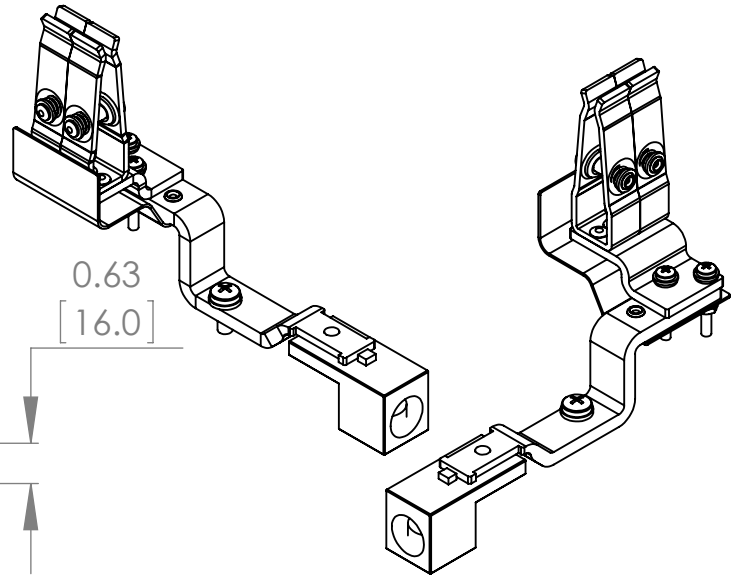
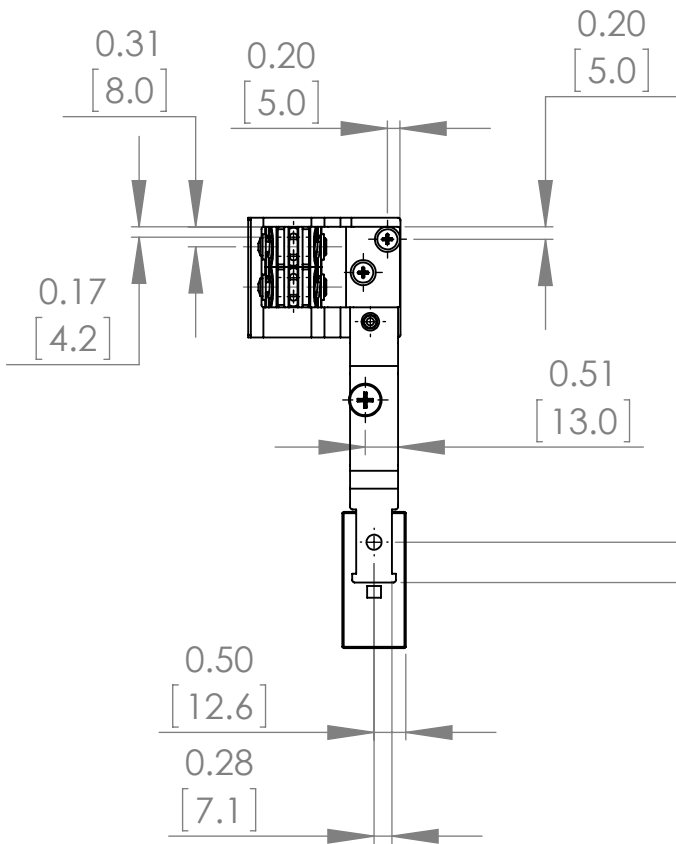
### **PRODUCT SPECIFICATIONS**

Manufacturer	BRAH Electric
Sub-Category	Neutral Kits
Family	XL-U
Type	UV
OEM Manufacturer	Siemens
Amperage Min	200
Amperage Max	200
Voltage Max	600

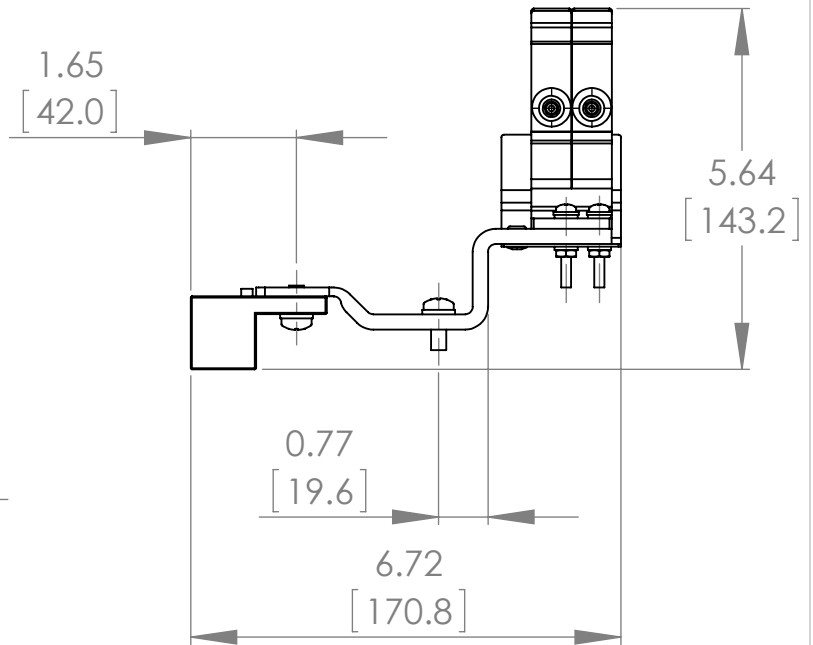
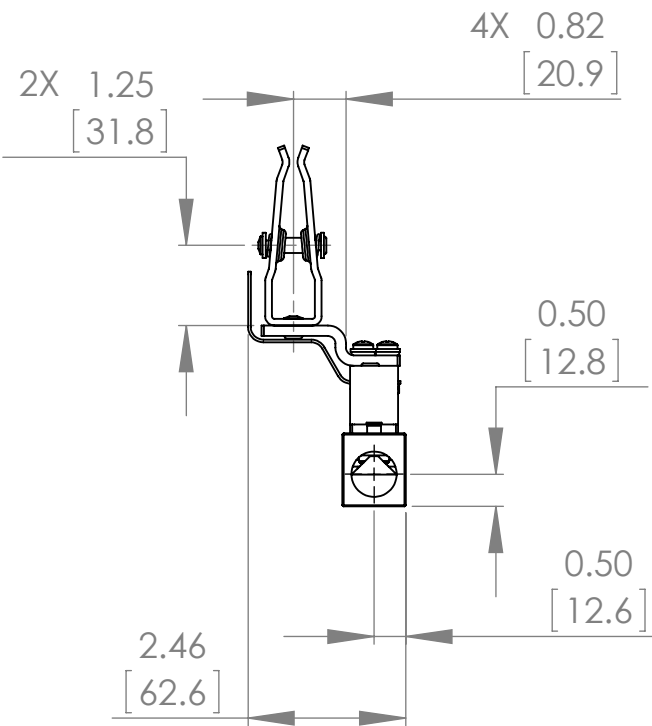
**Warranty:** All Products sold by BRAH Electric are guaranteed to be free of defect for a period of two years, under the condition that the product has been installed and operated properly. All items proven defective within the two-year period will be replaced by BRAH Electric. In the event that we cannot provide a direct replacement, your monies will be refunded in full. We are not responsible for any consequential losses or damages outside of the defective product as well as any replacements or repairs performed by another party without our written authorization from BRAH Electric.

REVISIONS

ZONE	REV.	DESCRIPTION	DATE	APPROVED
------	------	-------------	------	----------

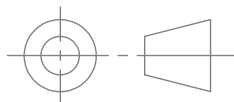


ISO VIEW



[WWW.BRAHELECTRIC.COM](http://WWW.BRAHELECTRIC.COM), 855-355-2724

\* NOTE: BRAH ELECTRIC, XL-U, NEUTRAL KITS, TYPE UV, 200A, 600V, SUITABLE FOR USE WITH UV BUS PLUGS



THIRD ANGLE PROJECTION

**PROPRIETARY AND CONFIDENTIAL**

THE INFORMATION CONTAINED IN THIS DRAWING IS THE SOLE PROPERTY OF BRAH ELECTRIC. ANY REPRODUCTION IN PART OR AS A WHOLE WITHOUT THE WRITTEN PERMISSION OF BRAH ELECTRIC IS PROHIBITED.

UNLESS OTHERWISE NOTED  
ALL DIMENSIONS ARE IN INCHES  
METRIC UNITS ARE DISPLAYED  
BENEATH IN [ MM. ]

MATERIAL	-
FINISH	N/A
DO NOT SCALE DRAWING	



NEUTRAL KITS

SIZE	DWG. NO.	REV.
<b>A</b>	UV200N	<b>A</b>
SCALE: 1:3	WEIGHT:	SHEET 1 OF 1