



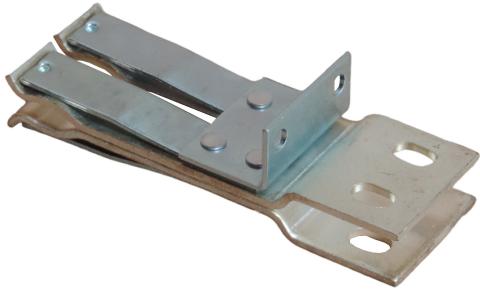
CONTACT US

855.355.2724

E-Mail: sales@brahelectric.com

[www.brahelectric.com](http://www.brahelectric.com)

## PRODUCT DATA SHEET



STAB KITS

PART NO. 400ASTAB

### PART NUMBER – 400ASTAB

400ASTAB, bus plug replacement stab finger, stab to be utilized for any phase including neutral phase for four wire applications, suitable for use with fusible and circuit breaker type OEM General Electric bus plugs from the Armor Clad Series, Spectra Series and Spectra Low-Amp Series, as well as BRAH Electric substitute models BEC, BEB and BEL, rated for 400 amp and 600 amp applications in both 240 volt and 600 volt, substitute replacement stabs for OEM GE Industrial Armor Clad, Spectra and Spectra Low-Amp bus plugs from 400 amp through 600 amp

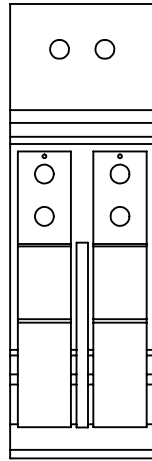
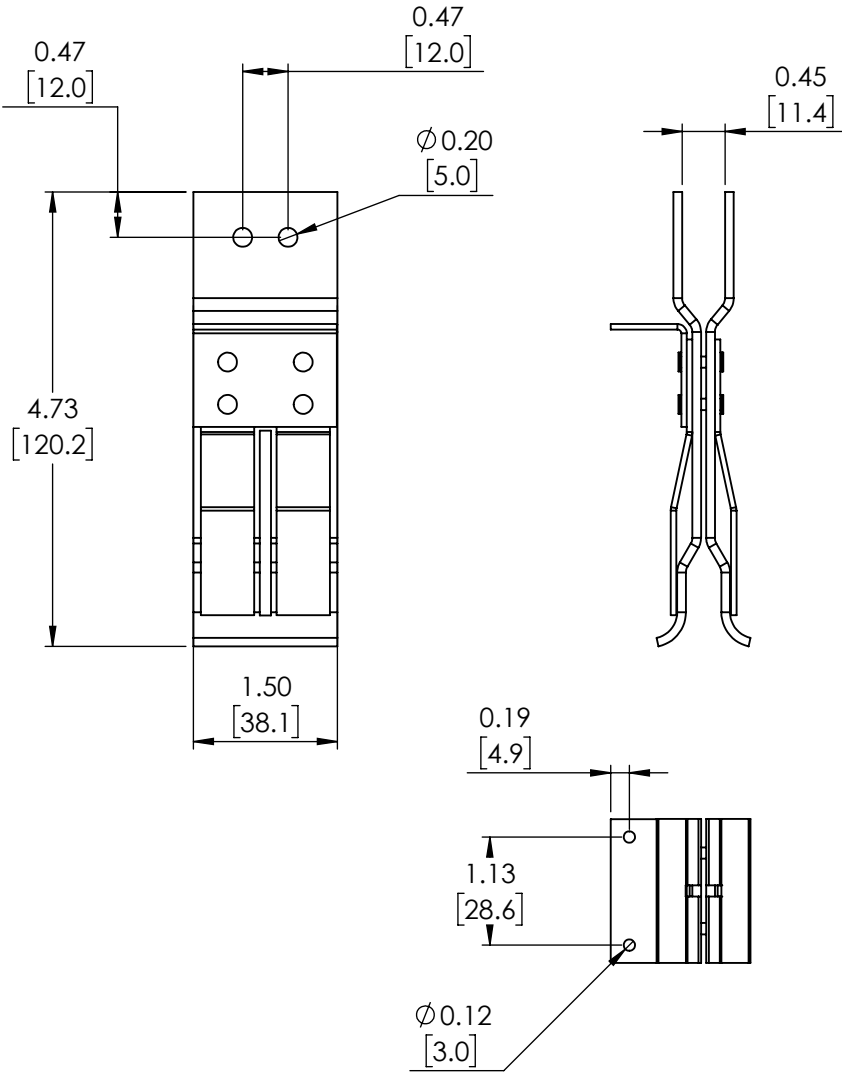
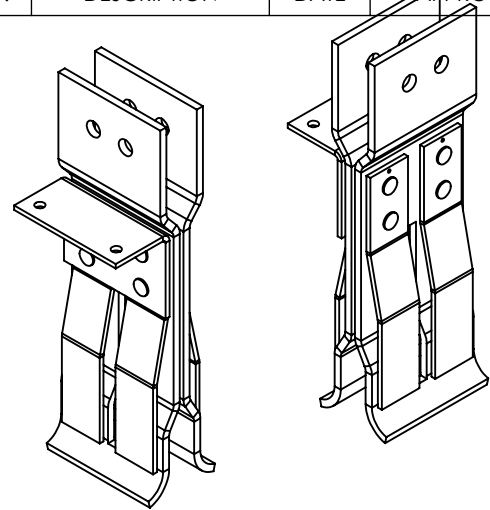
### PRODUCT SPECIFICATIONS

Manufacturer	BRAH Electric
Sub-Category	Stab Kits
Family	Spectra, Spectra Low-Amp, Armor Clad
Type	STAB
OEM Manufacturer	General Electric
Amperage	400A - 600A
Voltage	600V

**Warranty:** All Products sold by BRAH Electric are guaranteed to be free of defect for a period of two years, under the condition that the product has been installed and operated properly. All items proven defective within the one year period will be replaced by BRAH Electric. In the event that we cannot provide a direct replacement, your monies will be refunded in full. We are not responsible for any consequential losses or damages outside of the defective product as well as any replacements or repairs performed by another party without our written authorization from BRAH Electric.

REVISIONS

ZONE	REV.	DESCRIPTION	DATE	APPROVED
------	------	-------------	------	----------



400ASTAB, BRAH Electric, aftermarket direct replacement, bus plug stab finger, rear mounting, 1 stab required per phase/pole, rated for 400Amp - 600Amp bus plugs, stab suitable for use with GE Armor Clad, Spectra SB, and Spectra Low-Amp SL bus plugs

[WWW.BRAHELECTRIC.COM](http://WWW.BRAHELECTRIC.COM), 855-355-2724

<p>THIRD ANGLE PROJECTION</p>	<p>UNLESS OTHERWISE NOTED</p> <p>ALL DIMENSIONS ARE IN INCHES METRIC UNITS ARE DISPLAYED BENEATH IN [ MM. ]</p>			
	<p><b>PROPRIETARY AND CONFIDENTIAL</b></p> <p>THE INFORMATION CONTAINED IN THIS DRAWING IS THE SOLE PROPERTY OF BRAH ELECTRIC. ANY REPRODUCTION IN PART OR AS A WHOLE WITHOUT THE WRITTEN PERMISSION OF BRAH ELECTRIC IS PROHIBITED.</p>			<p>MATERIAL Copper with Silver Plating</p> <p>FINISH N/A</p> <p>DO NOT SCALE DRAWING</p>
<p>SIZE <b>A</b> DWG. NO. 400ASTAB</p>		<p>SCALE: 1:2</p>	<p>WEIGHT: 3.2 LBS</p>	<p>REV. <b>A</b></p> <p>SHEET 1 OF 1</p>