

## PRODUCT DATA SHEET



**PART NUMBER – BLC2D32:** BRAH Electric, aftermarket direct replacement contactors for Telemecanique LC2D32, TeSys D Series, type LC2D, 3P, 3PH, 50A, 600V, 10HP @ 240V, 20HP @ 480V, 30HP @ 600V, complete with 110/120V AC coil, 1 N/O auxiliary contact, AC magnetic contactor, suitable for use with LC2-D series motor control systems

### PRODUCT SPECIFICATIONS

MAGNETIC CONTACTOR

PART NO. BLC2D32

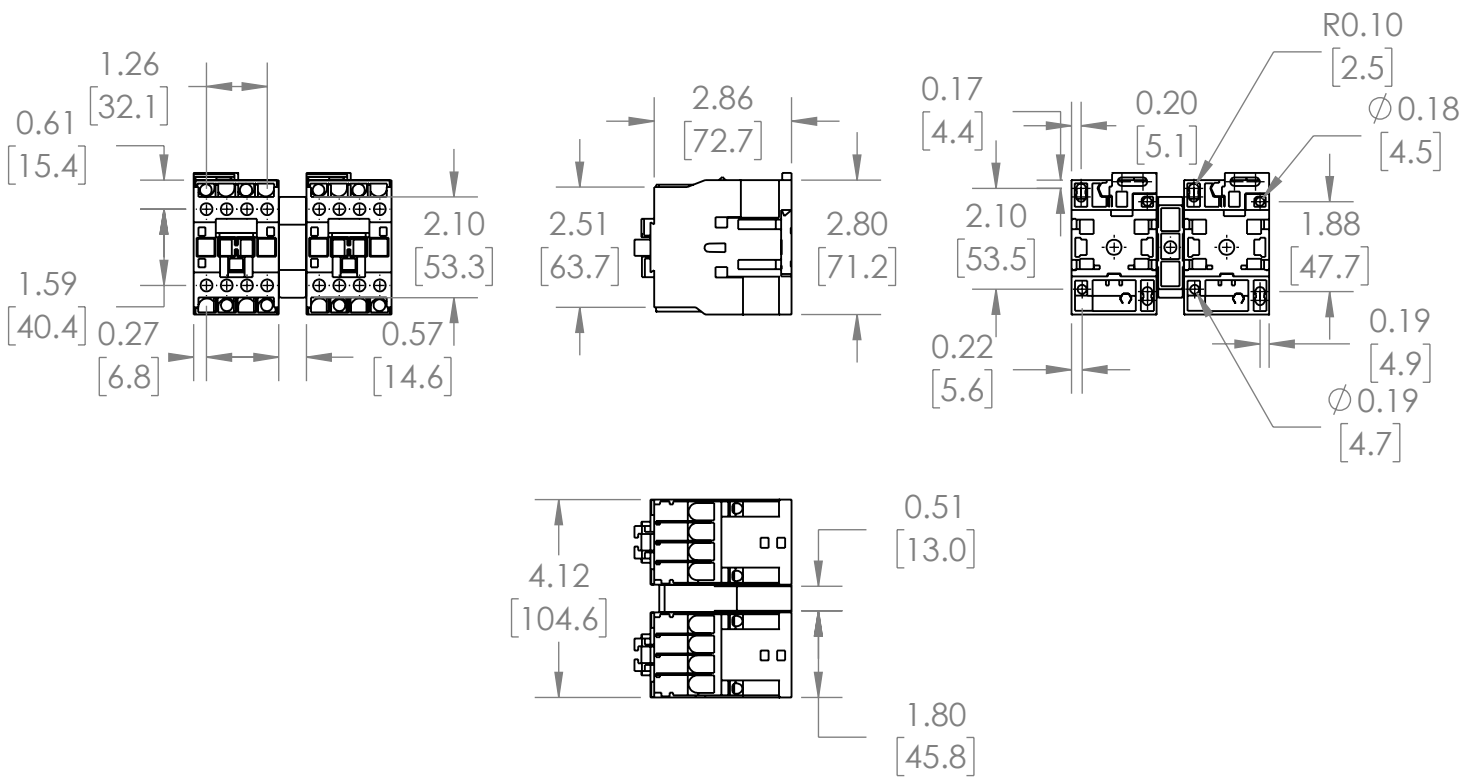
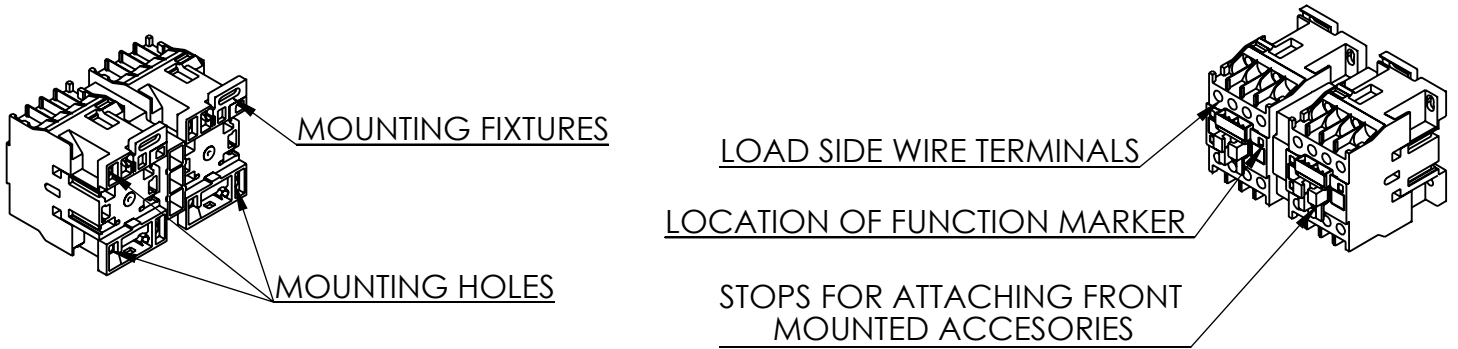
#### Voltage Selection Chart BLC2D32XX

BLC2D32	110/120 VAC
BLC2D3210	110/120 VAC
BLC2D3210-B6	24 VAC
BLC2D3210-B7	24 VAC
BLC2D3210-G6	110/120 VAC
BLC2D3210-G7	110/120 VAC
BLC2D3210-M6	220 VAC
BLC2D3210-M7	220 VAC
BLC2D3210-Q6	380 VAC
BLC2D3210-R7	440 VAC
BLC2D3210-T6	480 VAC
BLC2D3210-U6	240 VAC
BLC2D3210-U7	240 VAC

TYPE	VALUE (UNITS)	NOTES	COMMENTS
PHASE	3		
POLES	3		
VOLTAGE	600 (VAC)		
AMPERAGE	50(A)		
COIL VOLTAGE MIN	110 (V)		
COIL VOLTAGE MAX	120 (V)		
MIN HP. RATING	10 (HP)	@ 240V	
MAX HP RATING	30 (HP)	@ 600V	

**Warranty:** All Products sold by BRAH Electric are guaranteed to be free of defect for a period of one year, under the condition that the product has been installed and operated properly. All items proven defective within the one year period will be replaced by BRAH Electric. In the event that we cannot provide a direct replacement, your monies will be refunded in full. We are not responsible for any consequential losses or damages outside of the defective product as well as any replacements or repairs performed by another party without our written authorization from BRAH Electric

REVISIONS				
ZONE	REV.	DESCRIPTION	DATE	APPROVED



**\*NOTE: BRAH ELECTRIC CONTACTOR BLC2D32 IS AN AFTERMARKET DIRECT REPLACEMENT FOR LC2D32, LC2-D SERIES. SUITABLE FOR USE WITH LC2-D SERIES MOTOR CONTROL SYSTEMS**

<p>THIRD ANGLE PROJECTION</p>	<p>UNLESS OTHERWISE NOTED</p> <p>ALL DIMENSIONS ARE IN INCHES METRIC UNITS ARE DISPLAYED BENEATH IN [ MM. ]</p>	
	<p><b>PROPRIETARY AND CONFIDENTIAL</b></p> <p>THE INFORMATION CONTAINED IN THIS DRAWING IS THE SOLE PROPERTY OF BRAH ELECTRIC. ANY REPRODUCTION IN PART OR AS A WHOLE WITHOUT THE WRITTEN PERMISSION OF BRAH ELECTRIC IS PROHIBITED.</p>	
<p>MATERIAL MOLDED PLASTIC CASE</p>	<p>FINISH N/A</p>	<p>SIZE <b>A</b> DWG. NO. <b>BLC2D32</b> REV. <b>A</b></p>
<p>DO NOT SCALE DRAWING</p>	<p>SCALE: 1:4</p>	<p>WEIGHT: 3.2 LBS SHEET 1 OF 1</p>