

## PRODUCT DATA SHEET



**PART NUMBER – BLC2D3210-Q6:** BRAH Electric, aftermarket direct replacement contactors for Telemecanique LC2D3210-Q6, TeSys D Series, type LC2D, 3P, 3PH, 50A, 600V, 10HP @ 240V, 20HP @ 480V, 30HP @ 600V, complete with 380V AC coil, 1 N/O auxiliary contact, AC magnetic contactor, suitable for use with LC2-D series motor control systems

### PRODUCT SPECIFICATIONS

MAGNETIC CONTACTOR  
PART NO. BLC2D3210-Q6

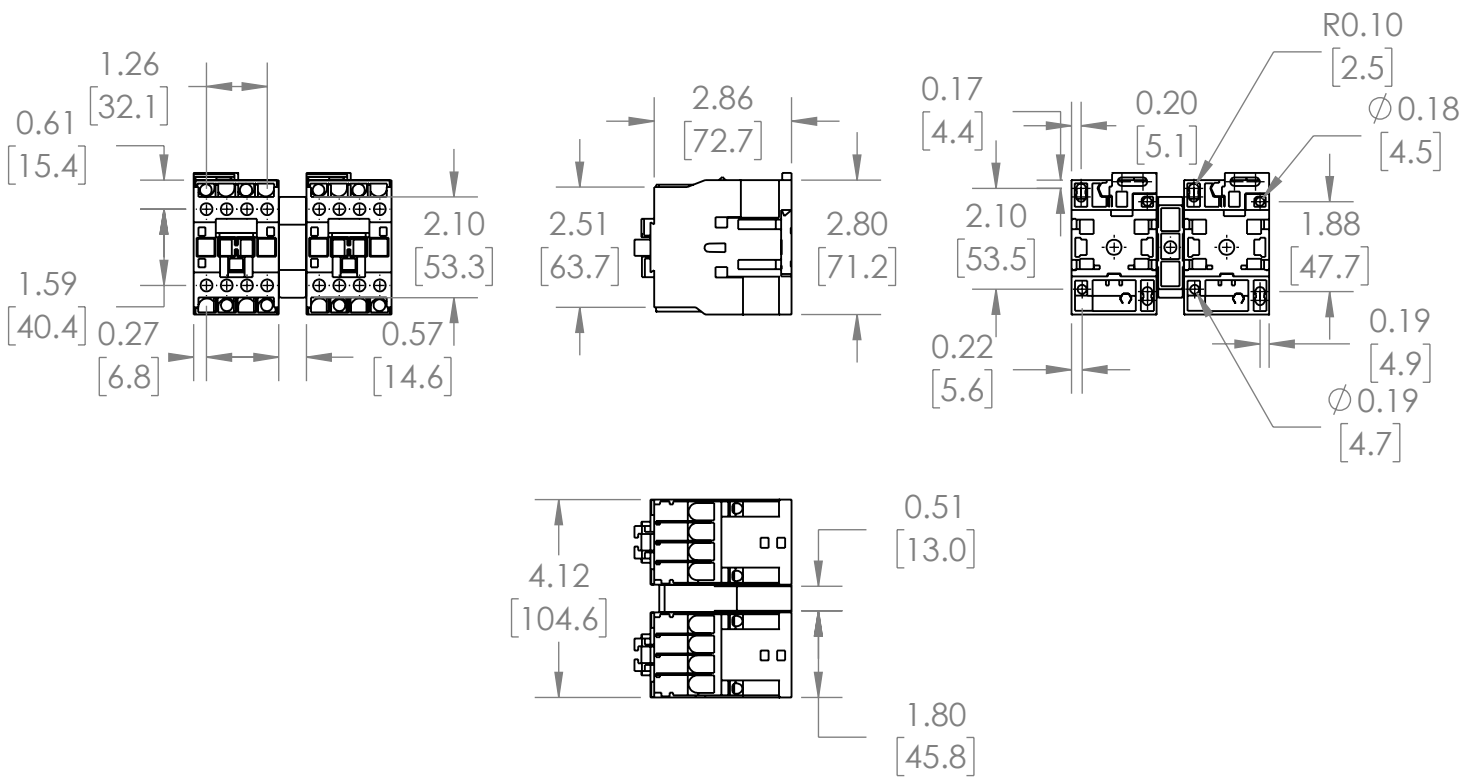
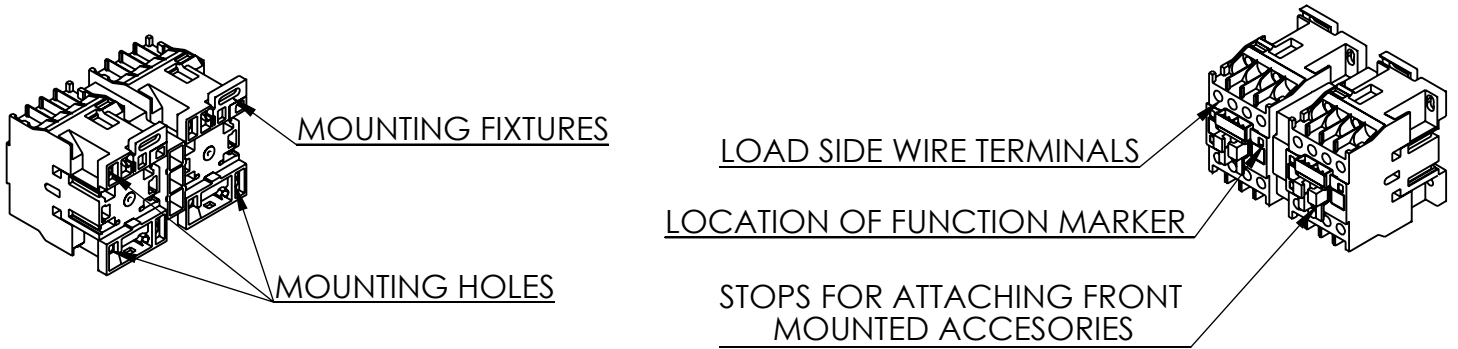
**Voltage Selection Chart  
BLC2D32XX**

BLC2D32	110/120 VAC
BLC2D3210	110/120 VAC
BLC2D3210-B6	24 VAC
BLC2D3210-B7	24 VAC
BLC2D3210-G6	110/120 VAC
BLC2D3210-G7	110/120 VAC
BLC2D3210-M6	220 VAC
BLC2D3210-M7	220 VAC
BLC2D3210-Q6	380 VAC
BLC2D3210-R7	440 VAC
BLC2D3210-T6	480 VAC
BLC2D3210-U6	240 VAC
BLC2D3210-U7	240 VAC

<i>TYPE</i>	<i>VALUE (UNITS)</i>	<i>NOTES</i>	<i>COMMENTS</i>
<i>PHASE</i>	3		
<i>POLES</i>	3		
<i>VOLTAGE</i>	600 (VAC)		
<i>AMPERAGE</i>	50(A)		
<i>COIL VOLTAGE MAX</i>	380 (V)		
<i>MIN HP. RATING</i>	10 (HP)	@ 240V	
<i>MAX HP RATING</i>	30 (HP)	@ 600V	

**Warranty:** All Products sold by BRAH Electric are guaranteed to be free of defect for a period of one year, under the condition that the product has been installed and operated properly. All items proven defective within the one year period will be replaced by BRAH Electric. In the event that we cannot provide a direct replacement, your monies will be refunded in full. We are not responsible for any consequential losses or damages outside of the defective product as well as any replacements or repairs performed by another party without our written authorization from BRAH Electric

REVISIONS				
ZONE	REV.	DESCRIPTION	DATE	APPROVED



\*NOTE: BRAH ELECTRIC CONTACTOR BLC2D3210-Q6 IS AN AFTERMARKET DIRECT REPLACEMENT FOR LC2D3210-Q6, LC2-D SERIES. SUITABLE FOR USE WITH LC2-D SERIES MOTOR CONTROL SYSTEMS

THIRD ANGLE PROJECTION

**PROPRIETARY AND CONFIDENTIAL**

THE INFORMATION CONTAINED IN THIS DRAWING IS THE SOLE PROPERTY OF BRAH ELECTRIC. ANY REPRODUCTION IN PART OR AS A WHOLE WITHOUT THE WRITTEN PERMISSION OF BRAH ELECTRIC IS PROHIBITED.

UNLESS OTHERWISE NOTED

ALL DIMENSIONS ARE IN INCHES  
METRIC UNITS ARE DISPLAYED  
BENEATH IN [ MM. ]

MATERIAL	MOLDED PLASTIC CASE
FINISH	N/A
DO NOT SCALE DRAWING	

**BRAH**  
Electric

MAGNETIC CONTACTOR

SIZE	DWG. NO.	REV.
<b>A</b>	BLC2D3210-Q6	<b>A</b>
SCALE: 1:4	WEIGHT: 3.2 LBS	SHEET 1 OF 1