

B670 WHEEL FELLER BUNCHER



ENHANCED TRAVEL & SAW RECOVERY.

The patented Power Direct Plus system optimizes performance by focusing power where the operator demands. The hydraulic pumps are oversized providing greater overall capacity and improved travel power and saw recovery.



ROCK SOLID STABILITY.

The patented transverse mounted engine design and low center of gravity provide rock solid stability. Superior stability delivers market leading cut and carry capability to build larger, easy to reach bundles improving skidder efficiency.



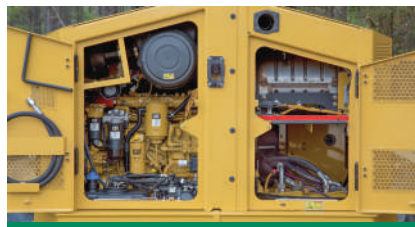
APPLICATION VERSATILITY.

The balance of a short wheelbase, power, stability and agility provides superior application versatility allowing seamless transitions from 1st thinnings to final fell applications. Versatility maximizes long term value as markets fluctuate.



OPERATOR COMFORT.

A quiet and spacious cab with a powerful HVAC system and rear view camera keep operators comfortable and productive. The premium seat with more leg room near the joystick mounts and overall machine balance provide a superior ride.



EXCELLENT SERVICEABILITY.

Pressurized engine, hydraulic and after treatment compartments keep debris out of the machine reducing down time for clean out. Ground level fuel fill, electric hydraulic oil fill pump and superior engine access deliver excellent serviceability.



GREATER DURABILITY & RELIABILITY.

The field proven cooling system keeps the engine and hydraulics cool, extending component life. Robust frames with integrated steering cylinder mounts and field proven hitch for nearly 20 years are built for the harshest applications.

B670 SPECIFICATIONS

Engine Model	Cat® C7.1 Tier 4 Final	Wheelbase	115.0" 2921 mm	Ground Clearance	23.4" 594 mm
Gross Power	241 hp 180 kW	Fuel Capacity	81.6 gal 309 L	Transport Width	10' 4" 3.16 m
Engine Speed	1880 rpm	DEF Capacity	5.0 gal 19 L	Transport Height	10' 9" 3.27 m
Weight	42,143 lb 19 116 kg	Hydraulic System	71.1 gal 269 L	Transport Length	25' 8" 7.73 m

Base configuration includes 30.5L-32 26PR Tires and 221 Center Post Felling Saw. Weight deduct 1,720 lb (780 kg) for 28L-26 tires, add 840 lb (381 kg) for 30.5L-32 2X Ring tires, 0 lb (0 kg) for 67-34 tires. Height and ground clearance deduct 4.0" (10.2 cm) for 28L-26 tires, 2.9" (7.4 cm) for 67-34 tires.

POWERTRAIN

- Cat C7.1 engine certified to EPA Tier 4 Final
- Primary and secondary fuel filters, including water separator
- Electric fuel priming pump
- Electric fuel transfer pump
- Centrifugal engine air pre-cleaner
- 2-Stage engine air cleaner
- Cross-flow cooling system with side by side cores
- Swing out air conditioner condenser and fuel cooler
- Hydraulically driven, on demand reversing cooling fan
- Electronically driven, reversing pressurizing fan
- 2-Speed, manually shifted transmission
- Cat HD axles, approved for odd size dual tires up to 30.5L-32 with 24.5L-32 and wide tires up to 73-44
- Momentary front differential lock
- On/off rear differential lock
- Heavy-duty driveshafts
- Lubed for life universal joints
- Spring applied, hydraulically released parking brake

OPERATOR ENVIRONMENT

- Enclosed OPS/FOPS/ROPS certified cab
- Reverse slope 3-piece windshield
- High capacity HVAC system
- Pressurized water tank
- Air suspension seat with harness seat belt
- Joystick steering controls
- Joystick gather arm(s) controls
- Foot pedal gather arm(s) controls ready only
- AM/FM/Bluetooth Radio
- Rear view camera
- 24V to 12V converter and 2 12V power ports
- 2 Beverage holders
- Advanced Operator Controls
- Operator control adjustability
- Terrain Selection Mode
- Creep Mode
- Road Steer Mode
- Computerized Monitoring System

SALES AND SERVICE

Sold and serviced exclusively through Weiler Forestry dealers worldwide

WEILERFORESTRY.COM

HYDRAULICS

- PowerDirect Plus System
- Load-sense hydraulics
- Variable displacement pumps
- High performance, multi-functioning main control valve
- Dual inline, spin on return filters
- Electric hydraulic oil fill pump

ELECTRICAL

- 130 ampere alternator
- 24-volt electrical system with 2 12-volt batteries
- Main disconnect switch with Diesel Exhaust Fluid (DEF) purge indicator light
- 6 halogen working lights
- Product Link™ Ready

OTHER STANDARD EQUIPMENT

- Heavy-duty double walled box section frames
- Dual tapered roller bearing upper and lower center hitch
- Pins, Chrome plated lift arm and tilt pins
- Ecology drains (engine oil, engine coolant, hyd tank, fuel tank, axles)
- Tilt Cab
- Pressurized engine, hydraulic and CEM compartments
- Ground level fuel fill
- Remote mounted test ports
- Single side engine service
- S-O-S sampling ports

OPTIONAL EQUIPMENT

- 221 Center Post Felling Saw - 22.7" (576 mm)
- 232 High Capacity Bunching Saw - 22.6" (573 mm)
- 222SC Side Cut Felling Saw - 22.0" (560 mm)
- 28L x 26 NOAW Tires - Overall Width 9' 2" (2.79 m)
- 28L x 26 Tires - Overall Width 9' 7" (2.92 m)
- 30.5L x 32 NOAW Tires - Overall Width 9' 9" (2.98 m)
- 30.5L x 32 Tires - Overall Width 10' 4" (3.16 m)
- 30.5L x 32 2X Ring Tires - Overall Width 9' 9" (2.98 m)
- 67 x 34 Tires - Overall Width 10' 7" (3.22 m)

WARRANTY

12 months standard, extended warranty available

Materials and specifications are subject to change without notice. Featured machines and photos may include optional equipment. All rights reserved.

B670, SS (10-2019)