

尺寸：高=150,宽=80

## Professional Interchangeable Hair Dryer Brush

SM-5258



Made In China

## IMPORTANT SAFETY INSTRUCTIONS

When using electrical appliances, especially when children are present, basic safety precautions should always be observed, including the following:



### READ ALL INSTRUCTIONS BEFORE USING KEEP AWAY FROM WATER



As with most electrical appliances, electrical parts are electrically live even when switch is off. To avoid the risk of death by electric shock:

**Always unplug this appliance from the electrical outlet immediately after using**

1. Do not use while bathing or in the shower.
2. Do not place or store this appliance where it can be fallen or be pulled into a tub or sink.
3. Do not place or drop into water or other liquid.
4. Do not reach for an appliance that has been fallen into water. Unplug it immediately.
5. Unplug this appliance before cleaning it.

## ⚠ WARNING

To avoid the risk of burns, fire, electric shock or injury:

1. An appliance should never be left unattended when it is plugged in.
2. Close supervision is necessary when this appliance is used by, on, or near children or individuals with certain disabilities or special needs.
3. Use this appliance only for its intended use as described in this manual.
4. Never operate this appliance if it has a damaged cord or plug, if it is not working properly, if it has been dropped or damaged, or if it has been dropped into water.
5. Keep the cord away from the heated surfaces. Do not wrap the cord around the appliance.
6. Never use while sleeping.
7. Do not use outdoors or operate where aerosol (spray) products are being used, or where oxygen is being administered.
8. Do not use an extension cord.
9. This appliance is hot when in use. Do not let eyes or bare skin touch heated surfaces.
10. Do not place the heated unit directly on any surface while it is hot or plugged in.
11. Always store this appliance and cord in a moisture-free area.
12. Do not store it in temperatures exceeding 140°F (60°C).
13. Do not plug or unplug this appliance when your hands are wet.



## KEEP AWAY FROM CHILDREN

Keep These Instructions  
**IMPORTANT  
SAFETY  
INSTRUCTIONS**

## Feature

Multiple different functional hair dryer brush can dry, straighten, curl, volumize your hair. User-friendly interchangeable brush head design, it is easy to change brush, just pressing the button is ok, and convenient to carry.

It has 900Watt Motor into it, strong wind is more easy to dry your hair.

2 speed and 3 heat settings with rotating adjustable temperature meet your needs of different hair types and hair styles.

1. Voltage: AC 110~127V/220V~240V, 50/60Hz.
2. Power: 900W.
3. Multifunctional Interchangeable Hot Air Brush.
4. New design heating wire, heating temperature is 60°C-140°C.
5. Three heat and two speed settings to meet hair drying and styling flexibility.
6. Removable brush head design, convenient to carry; ergonomic handle, easy to use.
7. Motor without noise, strong power and lower noise, easy to lock in your style. fast drying.
8. 2m 360 degree swivel cord, plug can be configured according to different countries.

## How to use

1. Prior to plugging in check the voltage on the rating label to ensure it corresponds to your local voltage.
2. Your brush is equipped with three heat settings - Low, Middle and High. It is also equipped with a low switch. As a general guide, use the high speed setting for rough drying for thicker hair, and the middle setting for finer and more precise control when styling. The low setting

can be used at the end to set make style.

3. Start at the back of the head when drying your hair and work forward.

4. Do not concentrate the airflow on any one area for an extended period of time.

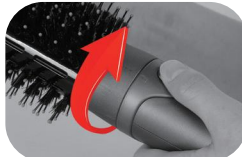
5. **Use Caution:** Start with low setting first to test the right temperature for your scalp.

**NOTE:** During the first few minutes of initial use you may notice smoke and a slight odor. This is normal and will quickly disappear.

## The Step Of Replacing Comb

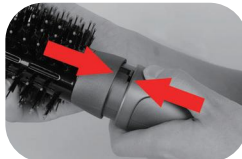
### Step1:

Press and hold the button, then turn the brush head to right to remove it



### Step2:

Make sure card slot of brush head and handle matched.



### Step3:

After they matched, turn brush head to left, it is installed well when sound occurs.



## Maintenance And Care

1. Always unplug and allow to cool prior to cleaning.
2. Periodically inspect the air intake/ filter screen on the back of the brush and remove debris that may have accumulated.
3. Build up may reduce air flow and damage the brush.
4. Never use the following chemicals to clean the product: thinner, gasoline, alcohols, or any other flammable chemicals.
5. Do not wrap the cord around the appliance: this may cause cord wear.
6. Use a soft dry cloth to clean.

## Caution

Never allow the power cord to be pulled, twisted, or severely bent. Never wrap the cord tightly around the appliance. Damage will occur at the high flex point of entry into the appliance, causing it to rupture and short circuit. Inspect the cord frequently. Stop using immediately if damage is visible or if unit stops or operates intermittently.

## Storage

When not in use, your iron is easy to store. Allow appliance to cool, then simply store out of reach of children in a safe, dry location. Do not jerk or strain cord at plug connections. Do not wrap the power cable around the appliance. Allow the cord to hang or lie loose and straight at the point of entry into the appliance.

## WARRANTY POLICY INSTRUCTIONS:

Products are manufactured on the basis of the highest standards and will provide you with superior performance when used in accordance with the instructions in this manual.

As our products are 1-year replacement and 1-year warranty, if

any problems, please feel free to contact us, we will reply to you at the first time.



**YOU THINK THE  
POWER IS OFF WHEN  
THE SWITCH IS OFF  
YOU'RE WRONG**

**ALWAYS UNPLUG  
SMALL APPLIANCES**