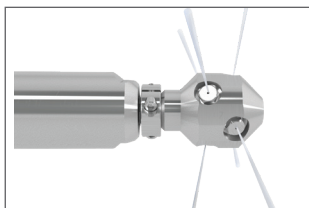


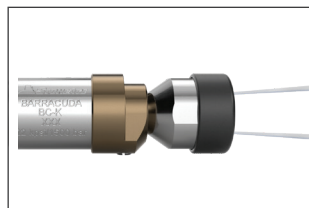
HANDS FREE FAN CLEANING

STONEAGE STRIKER™

- Remote operation from outside the blast zone increases safety
- Designed for a single operator to transport set-up and run, allowing you to spread your crew to more jobs
- Handles up to 70lbs of thrust for maximum cleaning efficiency while eliminating downtime from operator fatigue
- Delivers consistent repeatable results and longer maintenance cycles for your customer
- Modular design and accessories provide the flexibility to address a broad range of surface cleaning applications
- Change nozzles and jet patterns to accommodate unique surface shapes



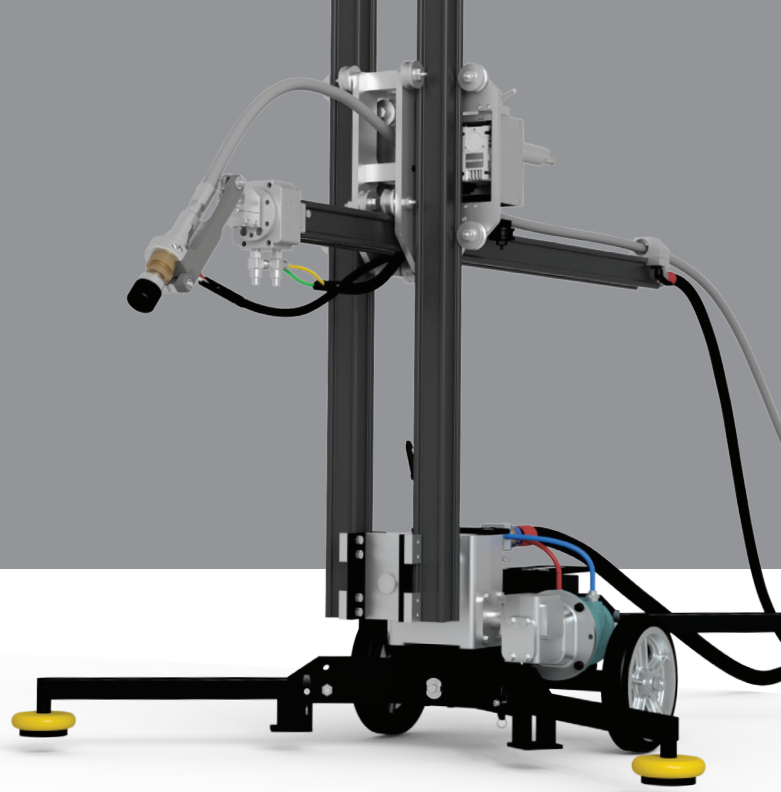
STONEAGE GOPHER™



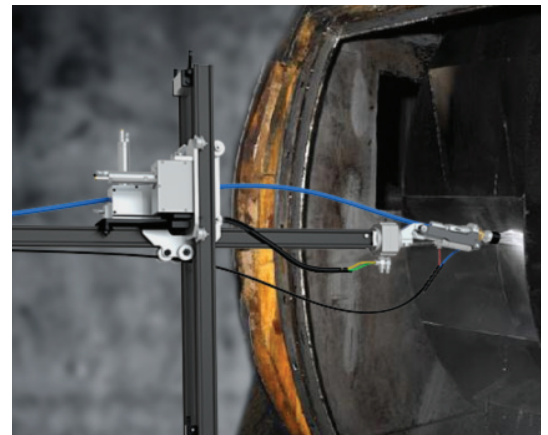
STONEAGE BARRACUDA™

SPECIFICATIONS

PRESSURE RANGE	Up to 40k psi (2000 bar)
REACTION FORCE	Up to 70 lb (310 N)
CLEANING WINDOW DIMENSIONS	52 in. H x 80 in. W x 46 in. D (1320 mm x 2030 mm x 1170 mm)
WEIGHT	260 lbs (118 kg)



Remove operator from dangerous manual shotgunning

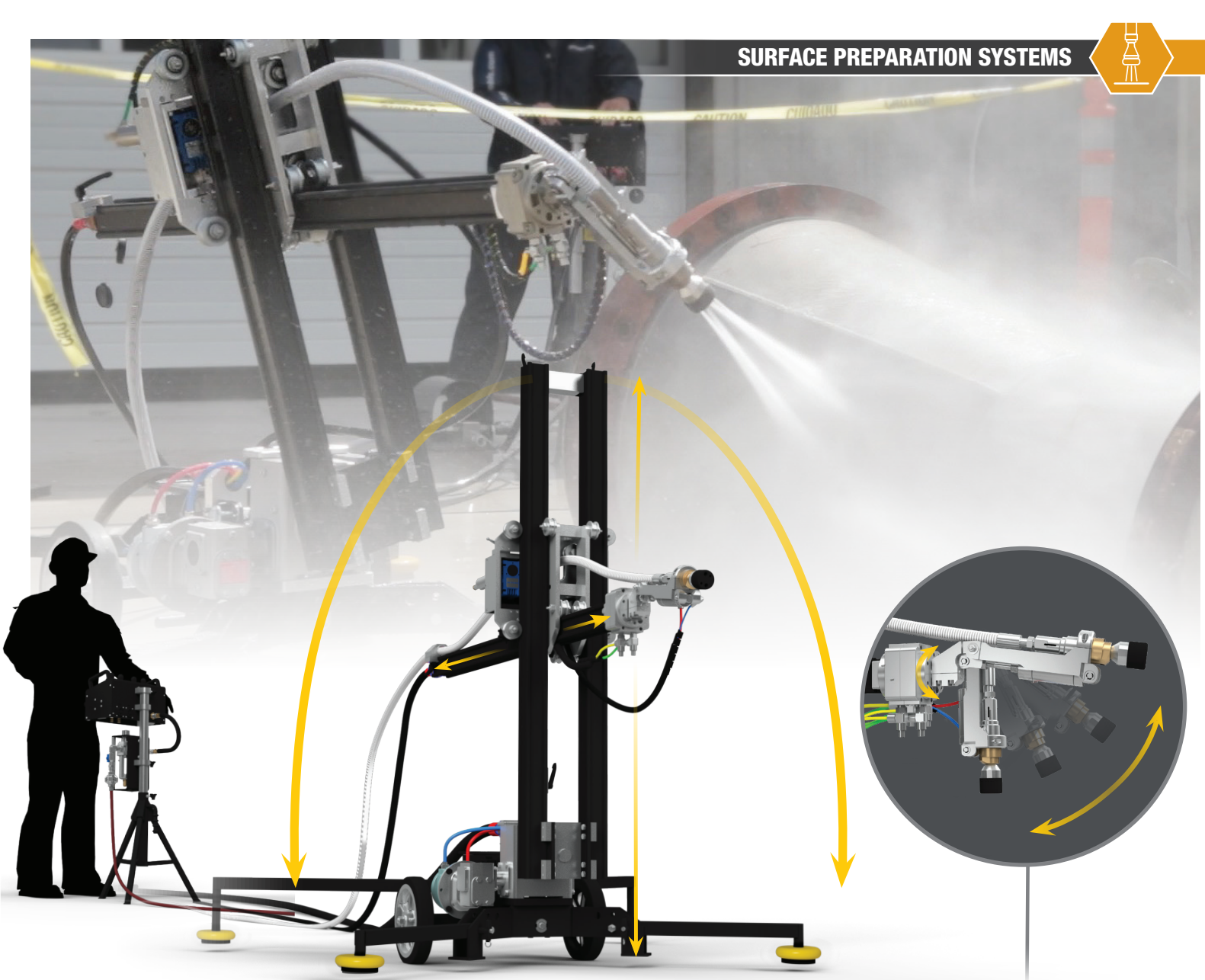


Safe, consistent cleaning with no variance required

**CALL US ABOUT USING STONEAGE AUTOMATED EQUIPMENT
TO WIN MORE JOBS WITH YOUR CURRENT WORKFORCE.**

1-866-795-1586

WWW.STONEAGETOOLS.COM

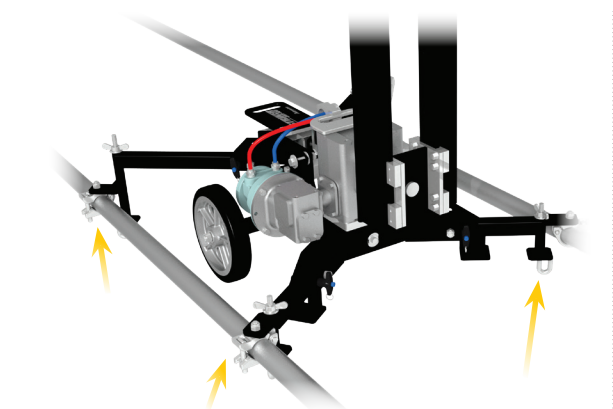


3-D CLEANING CAPABILITY

60 in. H x 84 in. W x 54 in. D
(1525 mm x 2134 mm x 1372 mm)

FULL WRIST ARTICULATION

Allows the "wrist" of the Striker to both flex 80 degrees and rotate up to 270 degrees.



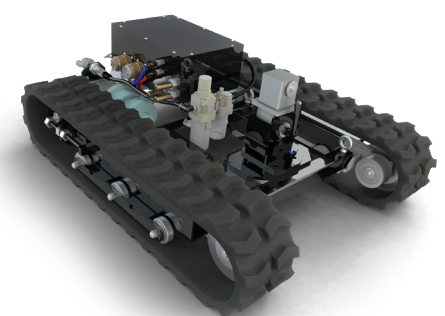
OPTIONAL SCAFFOLD & J-HOOK MOUNTS

Can be mounted to scaffolding or grating.



MODULAR SYSTEM

Designed for portability and easy assembly.



OPTIONAL TRACKED BASE

Allows remote operation and continuous cleaning without having to stop and reposition.

