

SENTINEL OS UPDATE INSTRUCTIONS

BEFORE YOU BEGIN:

To update the firmware (OS) on your Sentinel controller to version 2.0 or later, you will need your Sentinel controller and the StoneAge app on your phone. Make sure you are connected to the internet when you are ready to perform the update.



IN THE STONEAGE APP:

1. **Open the StoneAge app** on your phone and sign in.
2. Click on **Sentinel Link** to highlight it and then click **Next** at the bottom of the screen.
3. Click on **Controllers** at the bottom of the screen.
4. Click on **Connect Controller** at the bottom of the screen.



Download the StoneAge app from your favorite web store:

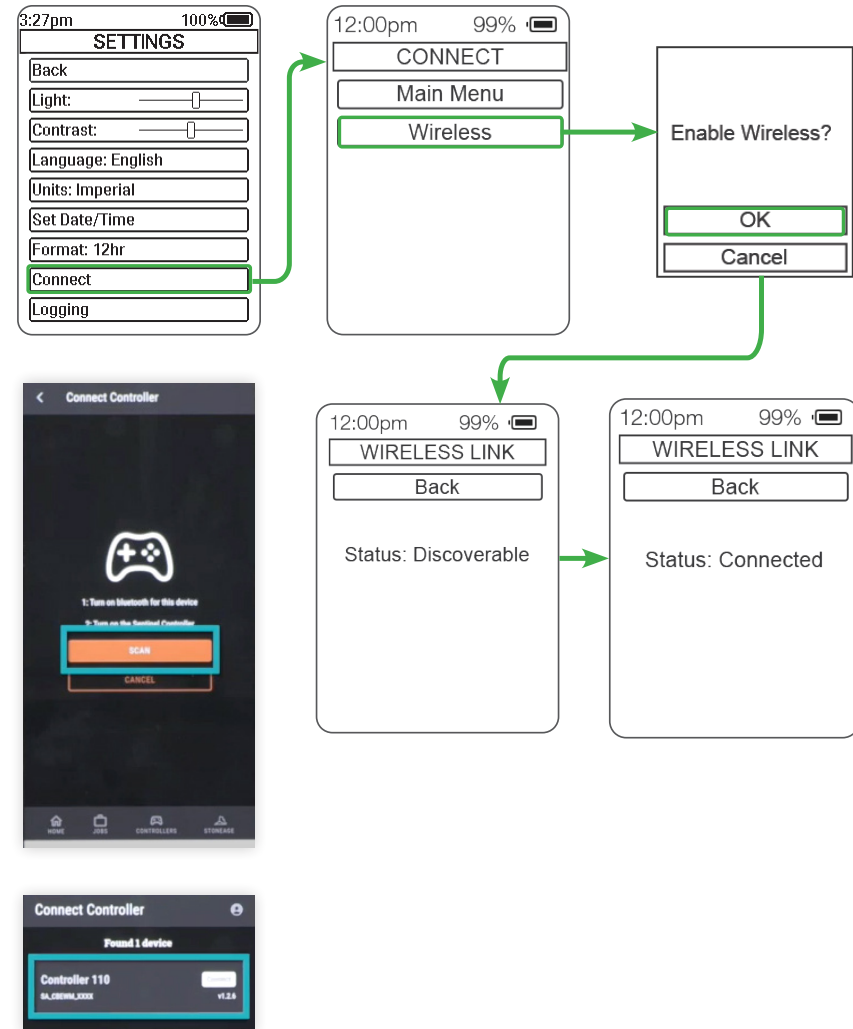


ON THE SENTINEL CONTROLLER:

5. Power on the Sentinel controller.
6. On the controller, use the left joystick to navigate down to **Connect** and click the left joystick to select it.
7. Navigate down to **Wireless** and click to select it.
8. When prompted to Enable Wireless, click OK. This will put the controller into Discoverable status.

IN THE STONEAGE APP:

9. In the StoneAge app on your phone, click on **Scan**.
The name of the controller will appear on screen.
Note: your phone may ask for permission to connect to nearby devices. Click Allow.
10. Click **Connect** next to the controller name. A message at the top of the screen will indicate when a connection is successful and the controller screen will display Status: Connected.



11. Click on **Controllers** at the bottom of the screen. This will display all the controllers in your Sentinel account and indicate which controller is connected to the app.
12. Click **Update Firmware** at the bottom of the screen. This displays the current version of firmware running on the controller.
13. Click on the dropdown menu to see all firmware versions available for the controller. **Choose the latest version**, at the top of the list, then click **Update Firmware** at the bottom of the screen.

The average update time is about a minute, as indicated by the status bar at the top of the screen. When the update is complete, the app will automatically disconnect from the controller.

ON THE SENTINEL CONTROLLER:

The controller will install the new firmware and reboot. A series of progress steps will appear on the controller screen as the update occurs.

After the controller restarts the update is complete.

You can see the firmware (OS) version running on the controller when you power the controller on.

