

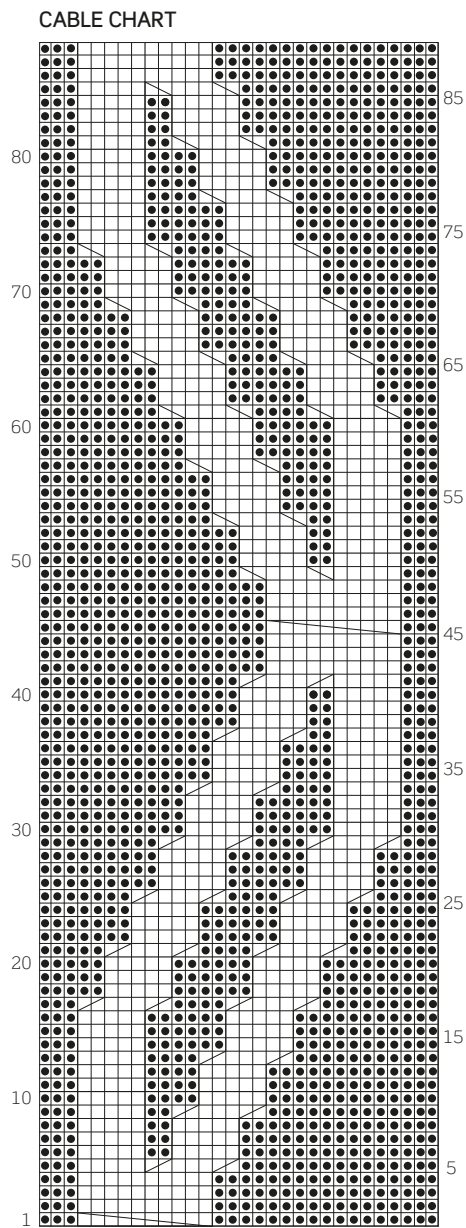


PATTERN CORRECTION – **THE KNITTING BOOK**

CABLED SCARF

Page 278

Updated chart



SET CABLE PANEL

When working the chart, read as all RS (odd) rows from R to L and all WS (even) rows from L to R.

Next row (RS): K3, work next 30sts as row 1 of cable chart, k3.

Next row: K3, work next 30sts as row 2 of cable chart, k3.

These 2 rows set sts.

Continue repeating the 88-row pattern repeat from chart, until work measures 198cm (78in), or desired length, ending after chart row 1.

Decrease row (WS): K6, (p2tog) five times, k to end. (31 sts)

Row 1: K3, p17, k5, p3, k3.

Row 2: K6, p5, k to end.

Row 3: As row 1.

Work 5 rows g st.

Cast off on WS.

(...pattern continues..)

PATTERN

Using 6mm (UK4/US10) needles, cast on 31sts.

Work 4 rows g st.

Row 5 (RS): K3, p to last 11sts, k5, p3, k3.

(...pattern continues..)