



PATTERN CORRECTION – **THE KNITTING BOOK**

STRAWBERRY CUSHION

Page 342

SPECIAL ABBREVIATIONS

C8F

RS: S4 to cable needle, hold in front, k4, k4 from cable needle.

[text removed]

C8B

RS: S4 to cable needle, hold in back, k4, k4 from cable needle.

[text removed]



PATTERN

CUSHION SIDE (Make 2)

Cast on 66sts using cable cast-on method (see p.89).

Row 1 (RS): K11, [inc in next st, k4, inc in next st, k15] twice, inc in next st, k4, inc in next st, k to end. (72sts)

Row 2 (WS): K9 [p12, k9] to end.

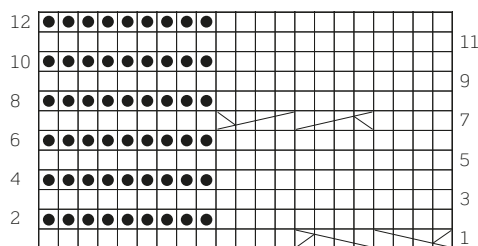
COMMENCE PATT

Work all RS (odd) rows from R to L and all WS (even) rows from L to R.

Row 1 (RS): K9, [work next 21sts as given for chart] three times.

(...pattern continues...)

CHART



KEY

