



PATTERN CORRECTION – **THE KNITTING BOOK**

CABLE AND TWIST STITCH PATTERNS

Page 362

KEY

□ K on RS rows, P on WS rows

◼ P on RS rows, K on WS rows

◻ T2L

◻ T2R

◻ C4B

◻ C6B

◻ C4F

◻ C6F

◻ MB = **make bobble**

◻ k2tog

◻ **s1 k2tog pss0**

◻ CR4L

◻ yfwd

◻ ssk

◻ **s2 K1 p2sso**

◻ CR4R

◻ C8B

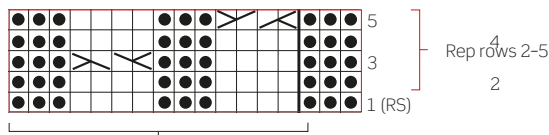
◻ CR2R

◻ C8F

◻ CR2L

FOUR-STITCH CABLE PATTERN

Updated chart





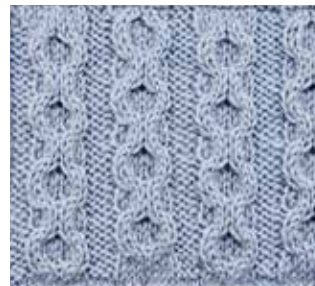
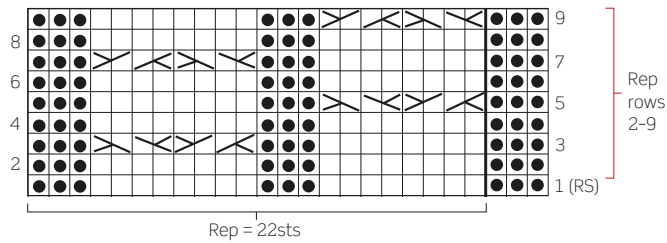
PATTERN CORRECTION – **THE KNITTING BOOK**

CABLE AND TWIST STITCH PATTERNS

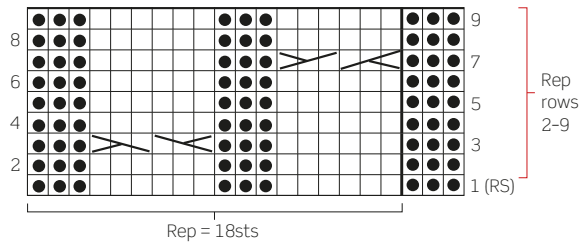
Page 363

CHAIN CABLE STITCH

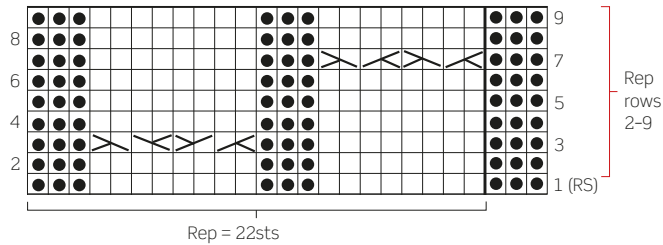
Updated chart



SIX-STITCH CABLE PATTERN



HORSESHOE CABLE





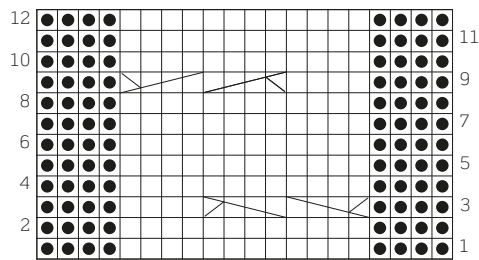
PATTERN CORRECTION – **THE KNITTING BOOK**

CABLE AND TWIST STITCH PATTERNS

Page 364

PLAIT CABLE

Updated chart



DIAMOND CABLE

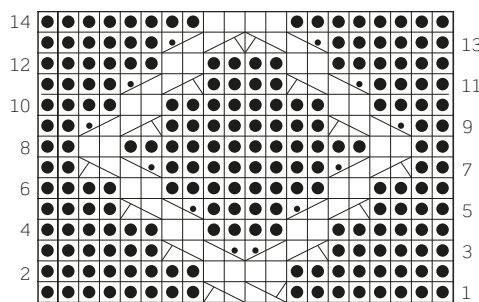
INSTRUCTIONS

Cast on a multiple of 20sts.

- Row 1: *P8, C4F, p8, rep from * to end.
- Row 2: *K8, p4, k8, rep from * to end.
- Row 3: *P6, CR4R, CR4L, p6, rep from * to end.
- Row 4: *K6, p2, k4, p2, k6, rep from * to end.
- Row 5: *P4, CR4R, p4, CR4L, p4, rep from * to end.
- Row 6: *K4, p2, k8, p2, k4, rep from * to end.
- Row 7: *P2, CR4R, p8, CR4L, p2, rep from * to end.
- Row 8: *K2, p2, k12, p2, k2, rep from * to end.
- Row 9: *P2, CR4L, p8, CR4R, p2, rep from * to end.
- Row 10: As row 4.
- Row 11: *P4, CR4L, p4, CR4R, p4, rep from * to end.
- Row 12: As row 4.



Updated chart





PATTERN CORRECTION – **THE KNITTING BOOK**

CABLE AND TWIST STITCH PATTERNS

Page 365

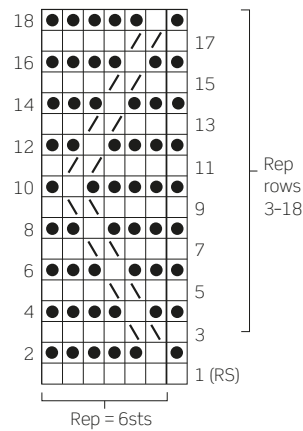
GARTER ZIGZAG TWIST

INSTRUCTIONS

- Row 1 (RS):** K.
 - Row 2:** *K5, p1, rep from * to last st, k1.
 - Row 3:** K1, *T2L, k4, rep from *.
 - Row 4:** *K4, p1, k1, rep from * to last st, k1.
 - Row 5:** K1 *k1, T2L, k3, rep from *.
 - Row 6:** *K3, p1, k2, rep from * to last st, k1.
 - Row 7:** K1, *k2, T2L, k2, rep from *.
 - Row 8:** *K2, p1, k3, rep from * to last st, k1.
 - Row 9:** K1, *k3, T2L, k1, rep from *.
 - Row 10:** *K1, p1, k4, rep from * to last st, k1.
 - Row 11:** K1, *k3, T2R, k1 rep from *.
 - Row 12:** Rep row 8.
 - Row 13:** K1, *k2, T2R, k2, rep from *.
 - Row 14:** Rep row 6.
 - Row 15:** K1, *k1, T2R, k3, rep from *.
 - Row 16:** Rep row 4.
 - Row 17:** K1, *T2R, k4, rep from *.
 - Row 18:** Rep row 2.
- Rep rows 3–18 to form patt.



New chart





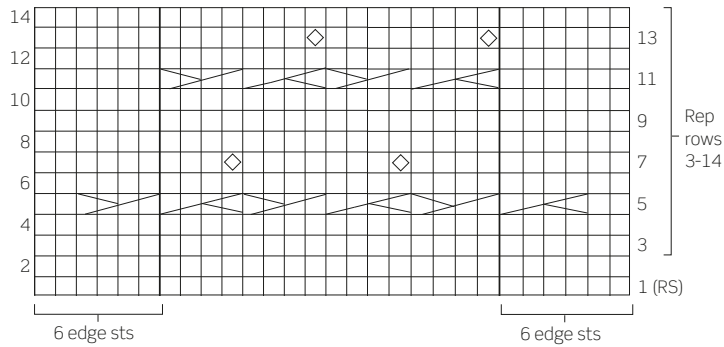
PATTERN CORRECTION – **THE KNITTING BOOK**

CABLE & TWIST STITCH PATTERNS

Page 366

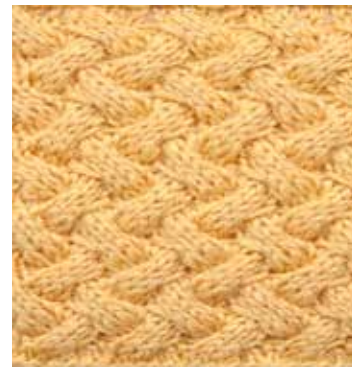
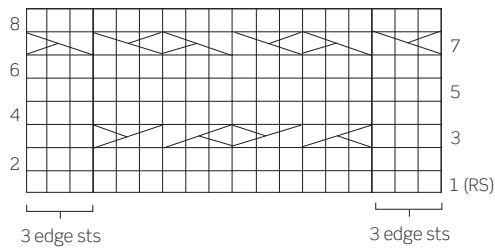
BOBBLE CABLE

Updated chart



WOVEN CABLE

Updated chart



CABLE CHECK

INSTRUCTIONS

Cast on a multiple of 8sts plus 4 extra sts.

Row 1 (RS): *P4, k4, rep from * to last 4sts, p4.

Row 2: K4, *p4, k4, rep from *.

Row 3: As row 1.

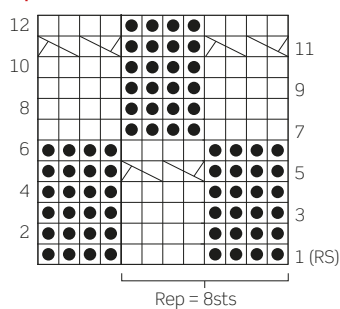
Row 4: As row 2.

(... pattern continues ...)

Row 12: As row 1.

Rep rows 1-12 to form patt.

Updated chart





PATTERN CORRECTION – **THE KNITTING BOOK**

CABLE AND TWIST STITCH PATTERNS

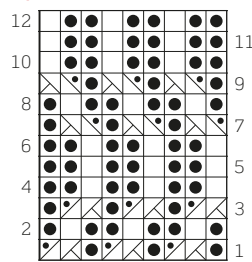
Page 367

WAVY CABLE

INSTRUCTIONS

- Row 1 (RS): *P1, CR2R, rep from * to end.
- Row 2: *K1, p1, k1, rep from * to end.
- Row 3: *CR2R, p1, rep from * to end.
- Row 4: *K2, p1, rep from * to end.
- Row 5: *K1, p2, rep from * to end.
- Row 6: As row 4.
- Row 7: *CR2L, p1, rep from * to end.
- Row 8: As row 2.
- Row 9: *P1, CR2L, rep from * to end.
- ... pattern continues ...

Updated chart



FAN CABLE

INSTRUCTIONS

- Read all odd (WS) rows from L to R.
- Read all even (RS) rows from R to L.
- (... pattern continues ...)

- Row 1 and all foll alt rows (WS): P.
- Row 2: *K6, CR2R, k6, rep from * to last 2sts, k2.
- ... pattern continues ...
- Row 20: *K8, p4, CR2L, rep from * to last 2sts, k2.
- Rep rows 1-20 to form patt.



Updated chart

