



PATTERN CORRECTION – **THE KNITTING BOOK**

LACE STITCH PATTERNS

Page 368

LEAF EYELET PATTERN

INSTRUCTIONS

Cast on a multiple of 8sts plus 7 extra sts.

Row 1 (RS): K.

Row 2 and all even-numbered (WS) rows: P.

Row 3: K2, *yfwd, s1 k2tog psso, yfwd, k5, rep from * to last 5 sts, yfwd, s1 k2tog psso, yfwd, k2.

Row 5: K2, *k1, yfwd, ssk, k5, rep from * to last 5sts, k1, yfwd, ssk, k2.

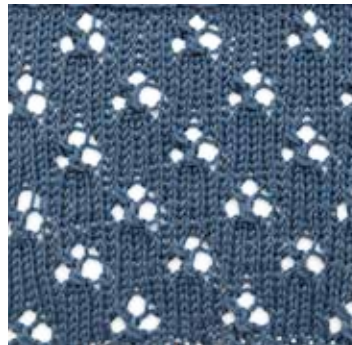
Row 7: K.

Row 9: K2, *k4, yfwd, s1 k2tog psso, yfwd, k1, rep from * to last 5sts, k5.

Row 11: K2, *k5, yfwd, ssk, k1, rep from * to last5sts, k5.

Row 12: P.

Rep rows 1-12 to form patt.





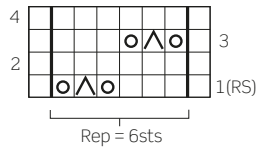
PATTERN CORRECTION – **THE KNITTING BOOK**

LACE STITCH PATTERNS

Page 369

MINI LEAF STITCH

Updated chart



ARROWHEAD LACE

INSTRUCTIONS

Cast on a multiple of 8sts plus 5 extra sts.

Row 1 (RS): K1, yfwd, s1 k2tog pssso, yfwd, *k5, yfwd, s1 k2tog pssso, yfwd, rep from * to last st, k1.

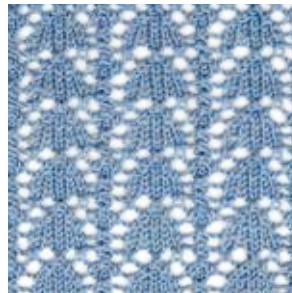
Row 2 and all even-numbered (WS) rows: P.

Row 3: Rep row 1.

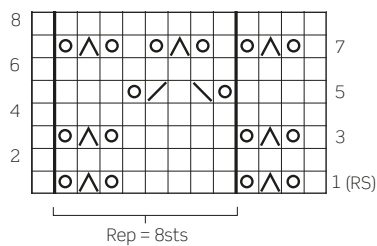
Row 5: K4, *yfwd, ssk, k1, k2tog, yfwd, k3, rep from * to last st, k1.

Row 7: K1, yfwd, s1 k2tog pssso, yfwd, *k1, yfwd, s1 k2tog pssso, yfwd, to last st, k1

(...pattern continues ...)



Updated chart





PATTERN CORRECTION – **THE KNITTING BOOK**

LACE STITCH PATTERNS

Page 371

DIAMOND LACE STITCH

INSTRUCTIONS

Cast on a multiple of 10sts plus one extra st.

Row 1 (RS): K1, *k1, k2tog, [k1, yfwd] twice, k1, ssk, k2, rep from *.

Row 2 and all even-numbered (WS) rows: P.

Row 3: K1, *k2tog, k1, yfwd, k3, yfwd, k1, ssk, k1, rep from *.

Row 5: K2tog, *k1, yfwd, k5, yfwd, k1, s1 k2tog pssso, rep from *, ending last rep ssk (instead of s1 k2tog pssso).

Row 7: K1, *yfwd, k1, ssk, k3, k2tog, k1, yfwd, k1, rep from *.

Row 9: K1, *k1, yfwd, k1, ssk, k1, k2tog, k1, yfwd, k2, rep from *.

Row 11: K1, *k2, yfwd, k1, s1 k2tog pssso, k1, yfwd, k3, rep from *.

Row 12: P.

Rep rows 1-12 to form patt.



VICTORY LACE

INSTRUCTIONS

Cast on a multiple of 8sts plus 6 extra sts.

Row 1: K5, *s1 k1 pssso, yo, k6, rep from * to last st, k1.

Row 2 and all foll alt rows: P.

Row 3: K4, *s1 k1 pssso, yo, k1, yo, k2tog, k3, rep from * to last 2 sts, k2.

Row 5: K3, *s1 k1 pssso, yo, k3, yo, k2tog, k1, rep from * to last 3 sts, k3.

Row 7: K.

Row 8: P.

Rep rows 1-8 to form patt.





A WORLD OF IDEAS:
SEE ALL THERE IS TO KNOW

PATTERN CORRECTION – **THE KNITTING BOOK**

LACE STITCH PATTERNS

Page 372

NAUTICAL MOTIF

INSTRUCTIONS

Cast on a minimum of 17sts.

Row 1 (RS): K7, k2tog, yo, k to end.

Row 2: P6, p2tog tbl, yrn, p1, yrn, p2tog, p to end.

(... pattern continues ...)





PATTERN CORRECTION – **THE KNITTING BOOK**

LACE STITCH PATTERNS

Page 373

DROPPED STITCH PATTERN

INSTRUCTIONS

Cast on a multiple of 4sts plus
2 extra sts.

Row 1 (RS): K.

Row 2 and all foll alt rows: P.

Row 3: K1, *k2, yo, k2, rep from * to last st, k1.

Row 5: K.

Row 7: K1, *yo, k2, drop next st off LH needle and
allow to ladder down to yo worked on row 3, k2, **[text
deleted]** rep from * to last st, k1.

Row 9: K.

Row 11: K1, *drop next st off LH needle and allow to
ladder down to yo worked on row 7, k2, yo, **[text
deleted]** rep from * to last st, k1.

Row 12: P.

Rep rows 5–12 to form patt.

Cast off on WS.

