

All wrapped up

CASUAL WRAP

TENSION

8 stitches and 12 rows in stocking stitch on 10mm (UK000/US15) needles = 10cm (4in) square.

STITCHES

Small basketweave pattern | Work the small basketweave pattern from the chart on page 34 over multiples of 6 stitches + 2.

The figures to the right of the chart refer to the right-side rows, those to the left the wrong-side rows. Begin with the stitches before the first arrow, continue repeating the pattern (6 stitches) between the arrows and finish with the stitches after the second arrow. For clarity, three pattern repeats are shown. Work from the bottom of the chart up and keep repeating rows 1–12.

Rib border | Knit 1 purl 1 alternately.

TO MAKE

The wrap is knitted in a single piece, beginning at the back hem and ending at the front hem.

Back | On a 10mm circular needle, cast on 86 stitches and work 5cm (2in) in knit 1 purl 1 rib. Then work from the chart and keep repeating rows 1–12.

Start the round with 2 stitches for the start of the pattern, then work 14 repeats of the 6 stitches between the arrows.

Neck opening | When work measures approximately 75cm (30in), after an 8th row of the chart, cast off the centre 10 stitches.

Fronts | Finish the right and left fronts separately. Leave the stitches for the left front



CASUAL WRAP

One size
Style: generous

MATERIALS

- 500g of Classic Elite Toboggan (80m/100g; 70% merino/ 30% alpaca) in black
- 10mm (UK000/US15) circular needle, 100cm (40in) long
- Circular needle to hold the stitches for the front

ALL WRAPPED UP

on a stitch holder and start with the right front. Continue the chart pattern as started on the back and work over 6 repeats plus 2 stitches for the pattern at the start of the row. When work measures 145cm (58in), finish with

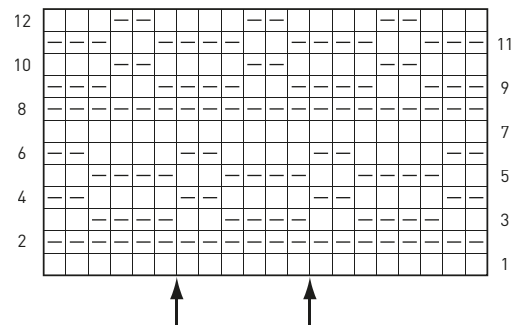
5cm (2in) in knit 1 purl 1 rib. Work the left front in the same way.

Finishing | Darn in all the ends.

Chart and pattern

CASUAL WRAP

CHART
Small basketweave pattern



Key:
 = Knit 1
 = Purl 1

PATTERN DIAGRAM
Measurements in cm (in)

