

# A RAINFOREST AROUND YOU

IMAGINE THAT ONE MORNING YOU WAKE UP AND LOOK OUTSIDE YOUR WINDOW . . . AND AN ENTIRE RAINFOREST HAS APPEARED OVERNIGHT! WRITE ABOUT SOME OF THE PLANTS AND ANIMALS YOU MIGHT SEE. TRY TO INCLUDE AS MANY OF THE SPECIES BELOW AS YOU CAN. USING SENSORY WORDS—WHAT YOU CAN SEE, HEAR, SMELL, TASTE, OR FEEL AROUND YOU—WILL HELP MAKE YOUR STORY FEEL MORE REAL.

**CLOUDED LEOPARD**

**PITCHER PLANT**

**DURIAN FRUIT**

**PYGMY ELEPHANT**

**ORANGUTAN**

**RAFFLESIA**

**PANGOLIN**

**SILVERED LANGUR**

**PELAWAN TREE**

**SUN BEAR**



TODAY, I WOKE UP AND...

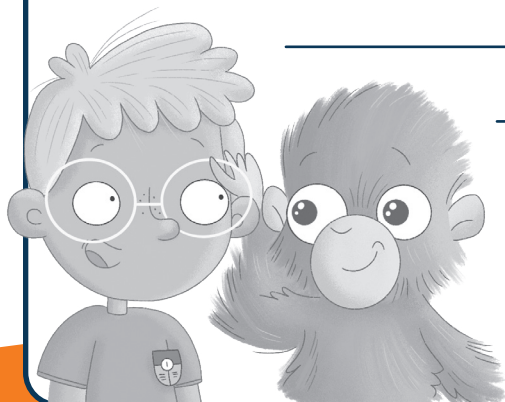
---

---

---

---

---



---

---

---

---



For the curious



# VOLCANIC VOCABULARY

MATCH EACH WORD FROM THE LIST ON THE LEFT WITH ITS DEFINITION ON THE RIGHT. THEN, CHOOSE TWO WORDS FROM THE GROUP AND USE THE EMPTY BOXES BELOW TO ILLUSTRATE WHAT EACH WORD MEANS. THIS WILL HELP YOU REMEMBER THE WORD WHEN YOU SEE IT AGAIN. FOR EXAMPLE, IF THE WORD WERE "FERTILE," YOU COULD FILL THE LETTERS IN WITH GREEN AND DRAW PLANTS GROWING OUT OF THEM.

- |                      |   |
|----------------------|---|
| A) <b>CRATER</b>     | _____ THE WORD USED TO DESCRIBE A VOLCANO THAT HAS NOT ERUPTED IN A LONG TIME |
| B) <b>DORMANT</b>    | _____ HOT, MELTED ROCK THAT HAS ERUPTED AT THE EARTH'S SURFACE                |
| C) <b>LAVA</b>       | _____ A BOWL-SHAPED HOLE IN THE TOP PART OF A VOLCANO                         |
| D) <b>PLUME</b>      | _____ THE STUDY OF EARTHQUAKES AND THEIR EFFECTS                              |
| E) <b>PUMICE</b>     | _____ A LIGHT VOLCANIC ROCK THAT IS FULL OF HOLES                             |
| F) <b>SEISMOLOGY</b> | _____ A LONG CLOUD OF SMOKE THAT LOOKS LIKE A FEATHER                         |

