

Curves

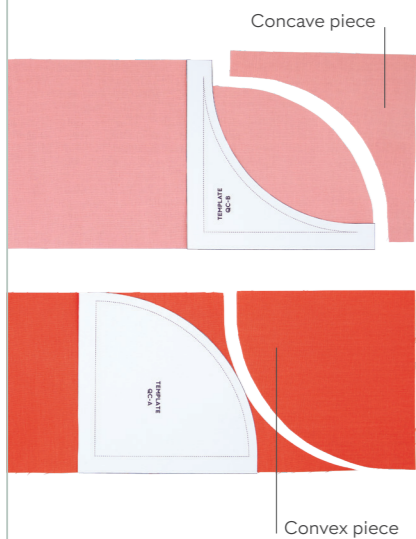
A quarter circle (QC) and a half circle (HC) are made by joining a convex piece, which has an outward curve, with a concave piece, which has an inward curve. All techniques in this section involve cutting and sewing along bias edges (see p.36).

PREPARING CURVES

Curved pieces must be cut using templates (see p.71) that are included with a pattern, specialty rulers, or an improv cutting technique (see p.111). Prepare curved pieces by clipping concave edges and pinning to assist with aligning curves.

CUTTING CURVES

- 1 Cut individual curved pieces from scraps, or subcut WOF strips the same height as the templates to efficiently cut curved pieces.

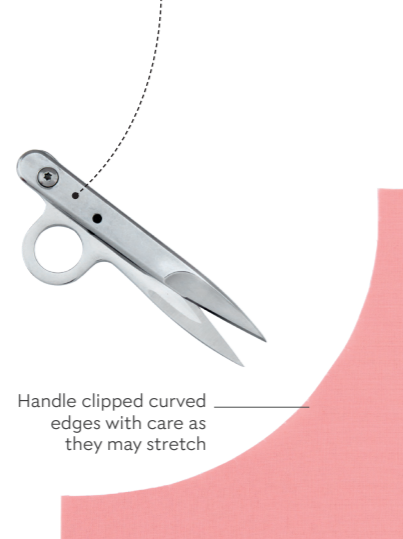


- 2 Alternate and nest templates when cutting from a WOF strip to cut the maximum number of pieces and reduce waste.

- 3 Use a 28mm rotary cutter to better maneuver around curved template edges.

CLIPPING CURVES

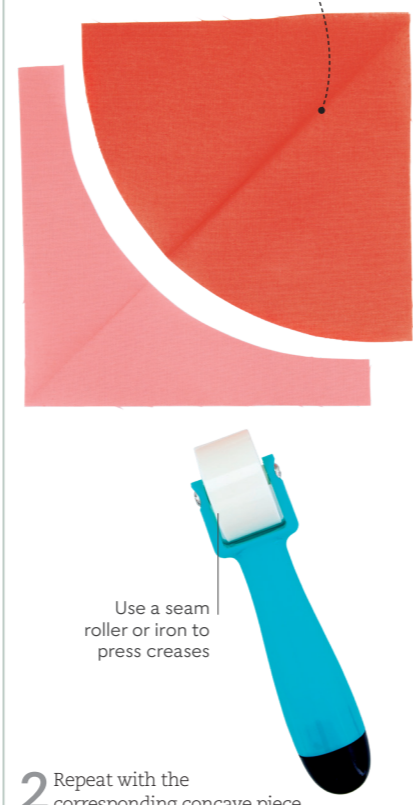
- 1 Use snips to make small cuts $\frac{1}{8}$ in (3.2mm) into the seam allowance along the curved edges of concave pieces.



- 2 Space cuts approximately $\frac{1}{8}$ in (1.3cm) apart, starting and ending at least $\frac{1}{8}$ in (1.3cm) away from the straight edges.

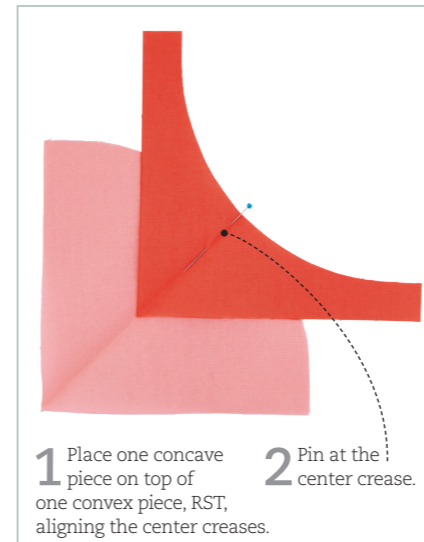
PRESSING

- 1 Gently fold and press a convex QC piece in half to make a center crease, or mark a registration line (see p.143) on the center of the curved edge.

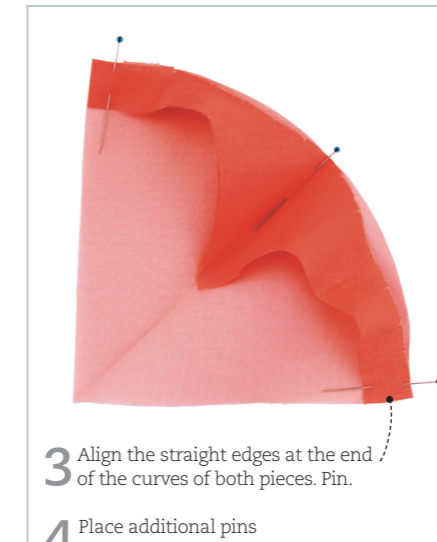


- 2 Repeat with the corresponding concave piece.

PINNING CURVES



- 1 Place one concave piece on top of one convex piece, RST, aligning the center creases.
- 2 Pin at the center crease.

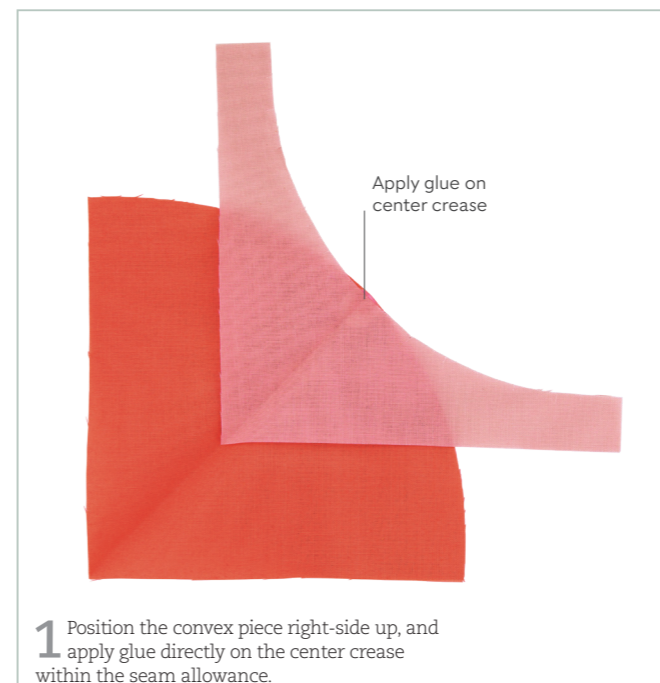


- 3 Align the straight edges at the end of the curves of both pieces. Pin.
- 4 Place additional pins as needed.



- 5 Follow steps 1–4 to pin a HC, folding each piece in half twice to make creases at the center and each quarter of the curved edge. Align and pin at all creases.

GLUING CURVES



- 1 Position the convex piece right-side up, and apply glue directly on the center crease within the seam allowance.

- 2 Place the concave piece on top of the convex piece, RST, aligning the center creases. Apply glue along the convex curved edge from the center crease out to a straight edge.



- 3 Align the concave curved edge with the glued convex edge, ensuring the straight edges of both pieces meet.

- 4 Apply glue along the remaining curved convex edge and align the pieces. Finger press to secure.

- 5 Press the seam allowance with a dry iron to set the glue. Follow steps 1–4 to glue a HC.