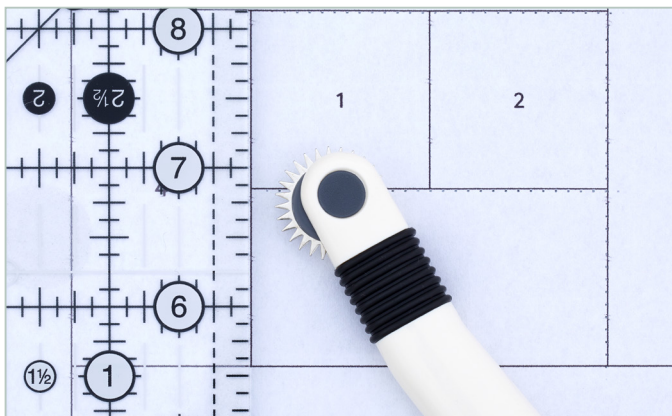


# Preparing FPP templates

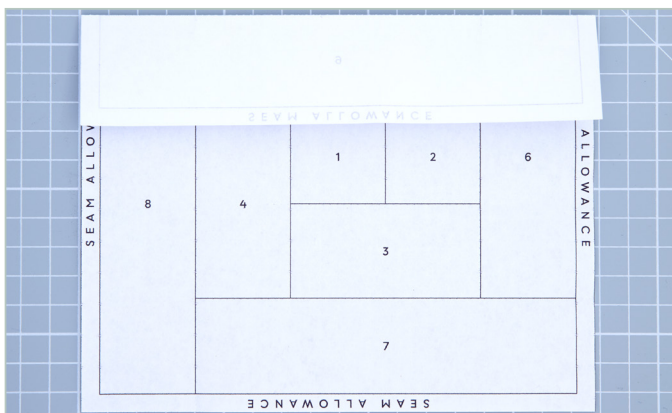
Purchase preprinted FPP templates or print templates at home on thin, easily tearable paper. Each template section is labeled with a number to indicate the order in which to place and piece fabrics; review before beginning. Templates are mirrored versions of the final design; fabric is placed on the wrong side of the template, while seams are stitched on the right side.

## SCORING SEAM LINES

There are two common methods for scoring FPP templates to make handling templates and paper removal easier: using a tracing wheel and folding.



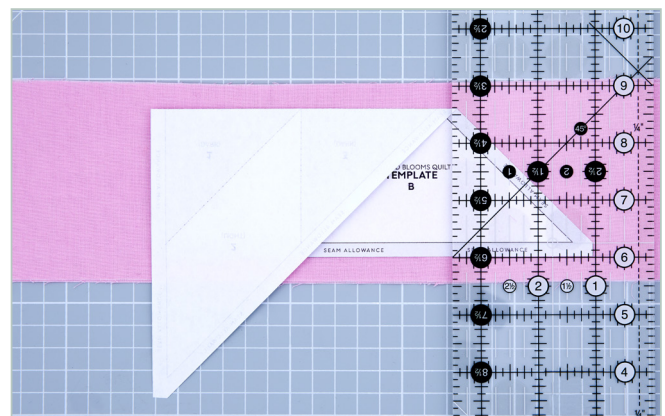
**Tracing wheel:** Roll a tracing wheel (see p.22) along a ruler to perforate the stitch lines. These small holes make it easier to remove the template paper after stitching.



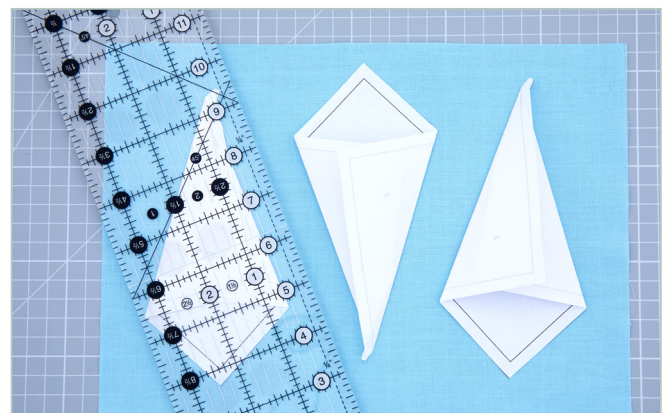
**Folding:** Prefold all seam lines using a thin ruler or cardstock. These creases assist with folding the fabric and template back when trimming seam allowances.

## CUTTING FABRICS

Fabrics are not cut into specific shapes, as the pieces within each template section vary. Cut WOF strips and trim pieces as needed or cut fabrics approximately.



**WOF strips:** Cut WOF strips based on the widest template section, adding 1in (2.5cm) to accommodate seam allowances and fabric placement. Cut fabric from the WOF strip as you go.



**Rough cutting:** Measure or hold a template section over a piece of fabric to estimate the needed fabric size. Be sure to include more than 1/4in (6.4cm) seam allowance in the rough cut.