

# DL SERIES

## Digital Level



### Features

- Advanced Accuracy
- Trigger Key Function
- 3.0 Inch Colorful Touch Screen for DL-2003A
- Magnetical-damped Compensator
- Multiple Data Transform
- Bluetooth Remote Control for DL-2003A



DL-2003A

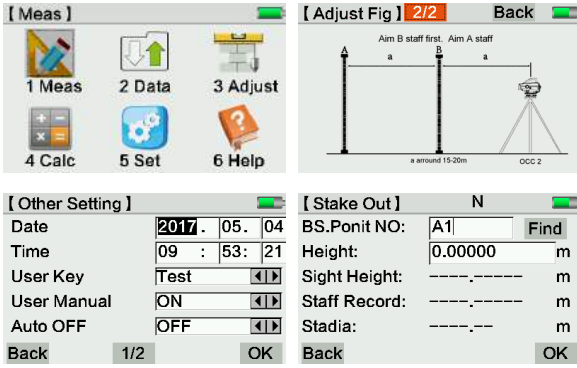


DL-2007G

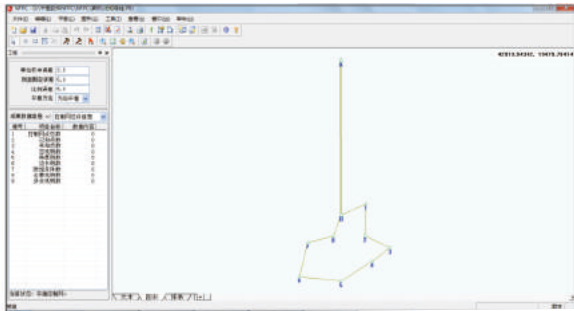


DL-202G

## Software



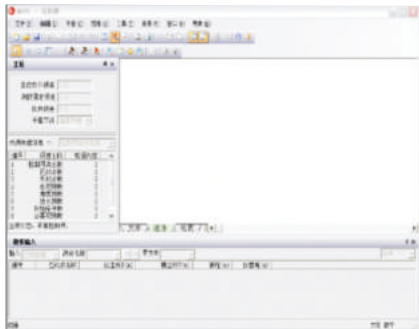
### Intelligent On-board System for DL-2003A



### Powerful Post-processing Software

It contains adjustment routines for dynamic adjustment of horizontal & vertical control network and angle & direction adjustment.

Easily zoom in or out to see the overall data in graphic.



### Seamless Transfer with Various Data Formats

Station/line	SD Length	AccSign/LineLength	SD Off	at	Height
1	35.2335	35.2335	0.1138	0.1138	
2	54.482	59.9155	-0.262	-0.1485	
3	48.915	138.8305	-0.937	-1.0835	
4	35.888	173.9195	-0.458	-1.5435	
5	37.1855	211.1088	-0.8915	-2.335	
6	65.129	268.2478	0.791	-1.549	
1	55.1438	55.1438	-0.7389	-0.7389	
2	37.1455	92.3495	0.833	-0.1485	
3	35.1025	127.4478	0.4851	0.2789	
4	43.9055	176.3495	1.8973	1.4284	
5	84.6478	238.9955	0.2244	1.6684	
6	35.2178	268.2105	-0.3389	1.3345	

### Precision Analysis & Report

The DL Data Download & Processor Software, makes the field work easier to display the complex leveling tasks.

## Specifications

Item		DL-2003A	DL-2007G	DL-202G
Height Accuracy (standard deviation for 1km double run leveling)	Digital Reading	0.3mm	0.7mm	1.5mm
	Optical Reading	2.0mm		
Distance Accuracy	Digital Reading	D≤10m:10mm;D>10m:D*0.001		
Distance Range	Digital Reading	2m~110m		
Minimum Display	HD	0.01mm/0.1mm/1mm	1mm/0.1mm	0.1mm/1mm
	Distance	0.1/1cm		
Measuring Time		within 3s in normal condition		
Telescope	Magnification	32X		
	Resolving Power	3"		
	Field of View	1°30'		
	Multiple Constant	100		
	Additive Constant	0		
Compensator	Type	magnetic-damped		
	Range	>±12'		
	Accuracy	0.20"/1'	0.30"/1'	0.50"/1'
Data Storage (for only DL-201, DL-2007)	Storage	128MB	16MB	
	Point Name	increasing/decreasing/customized		
	Connection	RS232/Bluetooth	USB	
	External Storage	U disk	SD Card	
Circular vial Accuracy		8'/2mm		
Display	3.0 inch LCD Colorful Touch Screen	160*64dpi LCD with illumination	128*32dpi LCD with illumination	
Working Temperature		-20°C~50°C		
Dimension	230mmX225mmX203mm	230mmX150mmX210mm		
Weight	3.1kg	2.5kg		
IP Standard	IP65	IP54		

## Invar Staff NSI-20M Specification

1	Circle Bubble	≤12'/2mm	
2	Surface curvature distinction	≤4mm	
3	Vertical of central axis and underside	≤5'	
4	Tolerance of zero point	≤0.05mm	
5	Basic barcode graduation tolerance	Deviation	≤0.02mm
		Standard deviation	≤0.013mm
6	Interval tolerance	≤0.04mm	