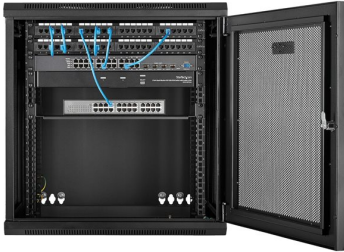


StarTech.com 12U 19" Wall Mount Network Cabinet, 16" Deep Hinged Locking IT Network Switch Depth Enclosure, Vented Computer Equipment Data Rack with Shelf & Flexible Side Panels, Assembled - 12U Vented Cabinet (RK12WALHM) - rack enclosure cabinet - 12U(RK12WALHM)

StarTech.com 12U 19" Wall Mount Network Cabinet, 16" Deep Hinged Locking IT Network Switch Depth Enclosure, Vented Computer Equipment Data Rack with Shelf & Flexible Side Panels, Assembled - 12U Vented Cabinet (RK12WALHM) - Rack enclosure cabinet - wall mountable - black - 12U



Securely mount your servers, network and telecom equipment to the wall, with this ventilated, lockable enclosure. This 12U server or network rack cabinet lets you mount your EIA-310 compliant equipment to the wall, in a secure enclosure that has a hinged rear door for easy access to your equipment. The enclosure features adjustable mounting depth from 3 to 17 in. to provide a robust storage solution for your rack-mount equipment.

To provide secure stability for your heaviest equipment, this rack offers 4-post mounting, supporting a higher weight capacity per U than 2-post racks and supporting a total load capacity of up to 200 lb. (90 kg).

Save valuable floor space by wall-mounting the enclosure. The wall-mounted design makes this enclosure the ideal solution for optimizing equipment storage in your classroom, retail store, server room or office. This rack also includes a 1U shelf that gives you a stable surface for placing equipment that's not rack-mountable or storing your tools.

The wall-mount network rack makes it easy to access your equipment and cabling, with a rear hinge that swings the enclosure away from the wall. By flipping the enclosure 180 degrees upon installation, you can reverse the direction of the hinge so that the enclosure can swing open from left or the right, depending on your preference.

The 12U network cabinet features a removable and reversible front door and removable side panels, each with quick-release mechanisms, so you can easily access your equipment. Plus, each door and panel on this rack features an independent lock, ensuring your equipment is secure.

For hassle-free cable management, the rack includes a 3 meter roll of hook-and-loop cable tie that makes it easy to keep your cables neat and tidy by binding them together or binding them to the rack. The self-gripping fabric can be cut to any size, enabling a wrap-around solution for the cables of any rack-mount equipment.

This server rack enclosure features heavy-duty steel construction, with lockable doors at all entrances. For hassle-free equipment installation, the mounting rails on the rack can be switched for use with square holes and cage nuts, or tapped rails.

To ensure your equipment is running at an optimal temperature, the server rack/cabinet promotes passive cooling. It features mesh doors and vented top and bottom panels for maximum airflow.

For simple and sturdy mounting, the rack's mounting holes are positioned 16 in. apart, so you can securely attach it to a wall using wall studs.

Key Selling Points

- Durable steel construction for long-lasting use
- Lockable front door and key lock for security
- Adjustable depth fits various equipment sizes
- Wall-mountable design saves space
- Supports a weight limit of up to 90 kg

Product Features

Secure design

The lockable front door and key lock offer necessary protection for your networking equipment, preventing unauthorized access.

Space-saving solution

Designed for wall mounting, this cabinet helps maximize space, making it perfect for environments with limited floor area.

Flexible installation

With adjustable depth, this cabinet accommodates a variety of networking equipment, ensuring compatibility with different setups.

Efficient airflow

The mesh front door ensures adequate ventilation, helping to maintain optimal temperatures for your devices.

Robust structure

Crafted from steel, this cabinet is built to withstand the demands of both home and professional use, providing storage for electronic

equipment.

Main Specifications

Product Description	StarTech.com 12U 19" Wall Mount Network Cabinet, 16" Deep Hinged Locking IT Network Switch Depth Enclosure, Vented Computer Equipment Data Rack with Shelf & Flexible Side Panels, Assembled - 12U Vented Cabinet (RK12WALHM) - rack enclosure cabinet - 12U
Product Type	Rack enclosure cabinet
Placing / Mounting	Wall mountable
Package Content	2 side panel keys, 48 screws (12-24), 48 cage nuts, 2 door keys, roll of hook-and-loop fastener
Colour	Black
Height (Rack Units)	12U
Product Material	Steel
Dimensions (WxDxH)	60 cm x 55 cm x 63.7 cm
Weight	27 kg
Features	Key lock, mesh front door, hinged, lockable front door, adjustable depth
Manufacturer Warranty	5-year warranty

Extended Specification

General

Product Type	Rack enclosure cabinet
Placing / Mounting	Wall mountable
Product Material	Steel
Package Content	2 side panel keys, 48 screws (12-24), 48 cage nuts, 2 door keys, roll of hook-and-loop fastener
Height (Rack Units)	12U
Width	60 cm
Depth	55 cm
Height	63.7 cm
Weight	27 kg
Inner Dimensions	45 cm x 53 cm x 53.4 cm
Colour	Black

Manufacturer Warranty

Service & Support	Limited warranty: - 5 years
-------------------	-----------------------------

Miscellaneous

Weight Limit	90 kg
Features	Key lock, mesh front door, hinged, lockable front door, adjustable depth

Product data is provided by CNET, we do not warrant the accuracy and completeness of the material contained in this data sheet