



User Manual

Multifunction Meter JEO2519

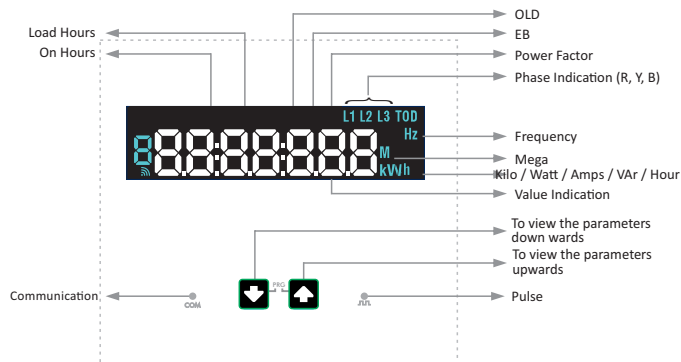


www.enerjeometers.com

1. FEATURES

- Real true RMS measurements.
- Simultaneous sampling of voltage and current.
- Aux voltage Input: 80 to 300V AC/DC.
- Accuracy class: Class1 as per standard IEC 62053-21.
- 1Row alpha numeric multi-colour LCD display 10mm height, with unique look.
- LCD display with 4 Digits for instantaneous, 7 Digits for Energy parameter. .
- On-site setup for wiring configuration: STAR and DELTA.
- Auto Scaling of Decimal point.
- Programmable CT & PT Ratio and User programmable password protection.
- Front LED pulse 16000 imp/KWh for 5A.
- Dynamic communication - User selectable address with selectable Parameters.
- Voltage and Current Phase angle measurement in the communication.
- Energy resetting at 99999999 KVAh*MF.
- Optional RS485 Communication

2. KEY & DISPLAY INDICATION



2.1 Key Indication

Key	In Setup Mode	In Run Mode
Up	To select the value and accept the value	To Scroll the pages
Down	To edit the value	To Scroll the pages

2.2 Display Parameter

Parameter	Meaning
K	Kilo
M	Mega
KM	Giga
LL with V	Average Voltage Line to Line
Ln with V	Average voltage Line to Neutral
A	Average Amps
F	Frequency
V with 12	Voltage Line to line RY phase
V with 23	Voltage Line to line YB phase
V with 31	Voltage Line to line BR phase
V1 with L1	Voltage Line to Neutral R Phase
V2 with L2	Voltage Line to Neutral Y Phase
V3 with L3	Voltage Line to Neutral B Phase

Parameter	Meaning
A1 with L1	Current R Phase
A2 with L2	Current Y Phase
A3 with L3	Current B Phase
Wh	Active Energy Import

3. PROGRAMMING MODE

3.1 Setup Procedure

- Press the UP & Down together to enter setup, display shows 0000SE
- Enter Password(default -1000). Blinking of digits indicate editing is possible.
- Press Down to decrement value from 9 to 1.
- Press Up to move to the next digit till 4th digit.
- If Password is correct, editing is possible and meter displays CLr.l
- Press down key to enter setup and Up key to enter clear mode. Refer 3.2 and 3.3.

Setup mode

- Press Up to view the parameter option/ value.
- Again press Up key to select and edit parameter value/ option.
- Press Down to decrement values or to select from available options.
- Press Up to move to the next digit till 4th digit.
- Press Up to save the option/ value parameter
- Press Down to edit next parameter till end of last parameter.

Refer 3.4

3.2 Clear Mode: Clear Integrator

Press UP Key	Meter displays CLr.	Meter displays CLr . M
Press Down Key	Displays CLr.l 'n' options can be changed by pressing Down Key. Display will prompt to 'y' (or) 'n' while pressing Down Key.	Option : (YES)/(NO) 'y' (for clearing) 'n' (for not clearing)
Press UP Key to accept the edited option	Comes back to Default page (Clear Mode ends here)	

3.3 Display Setup

Action	Action	Option / Range
Press Down key	StAr EL	Options: Star/Delta.
Press Down key	415.0 P.P	PT Primary (Range: 50V to 999K V)
Press Down key	415.0 P.S	PT Secondary (Range: 50V to 600 V)
Press Down key	5.000 C.P	CT Primary (Range: 0.5A to 99K A)
Press Down key	5.000 C.S	CT Secondary (Range: 0.5A to 6A)
Press Down key	9600. bA	Baud rate (Options: 4800/9600/19200/38400)
Press Down key	EUEn Pr	Parity (Options: Odd/Even/None)
Press Down key	1.000 dU	Device ID (Range: 1 to 125)
Press Down key	---- PW	Password (Range: 1000 to 9999)
Press Down key	rESL E.S	Energy selection (Option: resolution/Counter)
Press Down key	SAUE y	Save (Option: Yes/No)

3.4 Enabling and Disabling Auto Scrolling

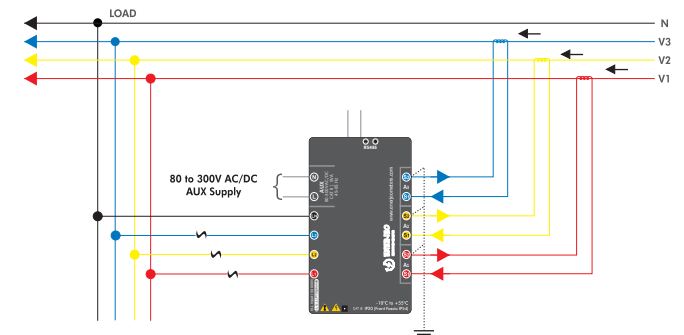
Press DOWN/UP key for 5 secs. Display shows: EnbL.Rt0

Now display will start to scroll all parameters automatically every 5 seconds.

Again press any key to disable auto scrolling. Display shows: d5bL.Rt0

4. WIRING DIAGRAM

Star Connection (3E) 3 Phase 4 Wire system



* Note Fuse rating 500mA Slow blow fuse.
NOTE: For DC Aux Voltage, +/- ve can be connected anyway.

6. MECHANICAL SPECIFICATION

side clamp installation

96

89.5

46

90⁺²₋₀

89.5

96

57.25

Note: Dimension measured in mm.

7.TROUBLESHOOTING

- 8. INFORMATION**

Enerjee does not claim any responsibility for the damage caused by using the product directly or indirectly as sufficient care has been taken to provide all information regarding the product. The user is advised to use according to the operating instructions, professional practices, wiring rules, codes, and safety regulations applicable to the given installation.