

# Esri ArcGIS Integration

GIS capabilities increase worker productivity and improve location-based customer service

Esri ArcGIS integration is a core feature of the KloudGin Platform, allowing the GIS map interface on the web and mobile to be leveraged as an integral part of any workflow to streamline operations for linear-based assets using geometric or utility networks and manage operations for above-ground or facility-based assets leveraging 3D maps.

KloudGin's Esri ArcGIS is designed to meet the demanding requirements for scalable and user-friendly GIS capabilities across the organization. This becomes critically important to companies who have assets and infrastructure dispersed over wide geographic areas. The integration gives organizations real-time location data, enabling precise decision-making, resource optimization, and seamless asset maintenance. It helps boost productivity, reduce downtime, and improve performance and the customer experience by eliminating siloed data and processes.

As a certified Silver Partner in Esri's global network of location intelligence and one of the only EAM solutions in the marketplace certified with Esri's ArcGIS System Ready, KloudGin enables organizations to integrate cutting-edge geospatial technology with their workflows and enhance operational efficiency.



ArcGIS System Ready  
Specialty

## Key Benefits

- ✓ **Enhanced Asset Reliability**  
Tightly integrated map-based workflows ensure crews can identify and perform work on the right asset.
- ✓ **Enhanced Efficiency**  
Streamlined workflows and accurate asset information improve operational efficiency.
- ✓ **Data-Powered Decision Making**  
Real-time location data empowers smarter decisions and resource allocation.
- ✓ **Seamless Collaboration**  
Redlining and asset grouping features enhance collaboration among field crews.
- ✓ **Improved Customer Service**  
KloudGin's integration fosters exceptional customer service through precise asset insights.

# Key Values & Features

## Embedded Work Orders

Eliminate the need for additional applications with the advanced ability to embed work orders over GIS maps. This helps:

- Create high visibility into work and asset operations
- Track, update, and collaborate over work orders live on the map
- Make better repair/replacement decisions
- Access critical and relevant information to accomplish tasks on the go

## Assisted Scheduling

Full integration into the scheduling engine helps dispatchers and planners visualize asset locations, crew assignments, and work orders, enhancing decision-making.

## Address Search

Users can easily find addresses or cross-street intersections on KloudGin, with auto-suggestions for enhanced convenience.

## Map-Based Self-Assign Scheduling

Authorized field users can leverage the map to see nearby work orders and self-assign work.

## Work Order-To-Location Linking

The KloudGin ArcGIS control lets users drop pins or identify geographic boundaries by drawing polygons and associating them with work orders.

## As-Built Integration

Access the as-built files on GIS maps to get a clear, updated picture of the asset and make better operational decisions.

## Online & Offline Transition

KloudGin offers uninterrupted functionality of its GIS maps by allowing field workers and contractors to smoothly switch between online and offline modes.

## Redlining

Users can communicate design modifications and add notes in real-time using the redlining feature on the map.



## DAWN CARAVALLO

MANAGER, ESRI PARTNER NETWORK

“KloudGin’s combined field service and asset management solutions provide customers a single face of work, paving the way for smarter asset and personnel deployment and strategic management decisions.”



# Key Values & Features

## Seamless Authentication

Companies can leverage the single sign-on feature while accessing the ArcGIS maps on KloudGin for a seamless experience.

## Zoom Levels

The zoom level of an asset can be specified on the GIS widget and can be retained across various devices and pages for a simplified user experience.

## Mobile Integration

Our user-friendly mobile interface helps streamline workflows on the GIS map, on the move. Contractors/field technicians can:

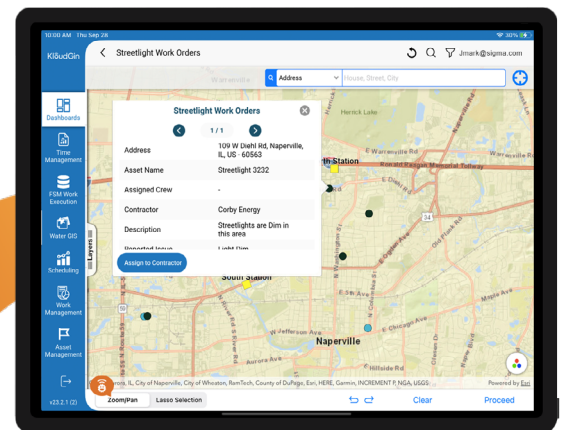
- Locate assets tied to a work order
- Add one or more assets to a work order or request
- View / Manage / Create work orders on maps
- Update asset status or attribute information
- Create asset groups and maintenance schedules
- View work history
- Add or modify redlining/annotations on GIS maps
- View As-Built drawings
- View GIS maps in offline mode

## Group Actions in Valve Trace

KloudGin gives users the ability to integrate valve trace programs directly into their workflows. iOS users, in particular, can select multiple valves in trace results to create a single work order for the crew. They can also create multiple work orders on valves and assign them to different crews.

## Attribute Visibility & Control

Companies can tap and view attributes. KloudGin lets companies configure visible attributes for the end user.



## About KloudGin

KloudGin is the only cloud provider to combine Enterprise Asset & Field Service Management and AI-powered algorithms into a single solution which connects the back office, customers, mobile employees, and assets. Built for the workers who use it most, KloudGin eliminates traditional information and process silos to enable clients to unify systems, resources, and processes in real time so they can transform the customer experience and improve worker productivity.

Contact a KloudGin industry specialist to learn more.

1-877-256-8303 | KloudGin.com

**KloudGin**  
Single Face of Work®