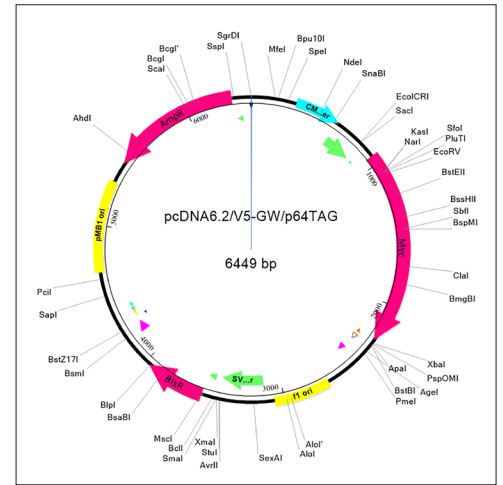
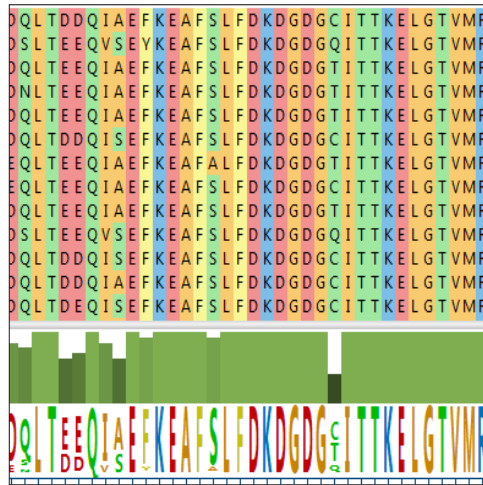


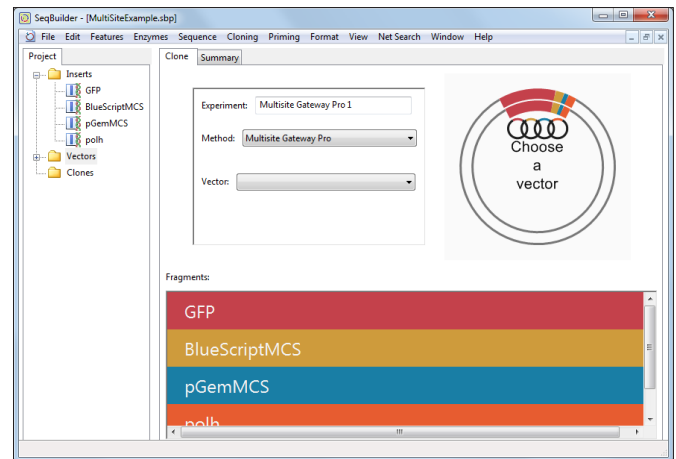
# LASERGENE MOLECULAR BIOLOGY

## Essential software for sequence analysis



### COMPREHENSIVE SEQUENCE ANALYSIS

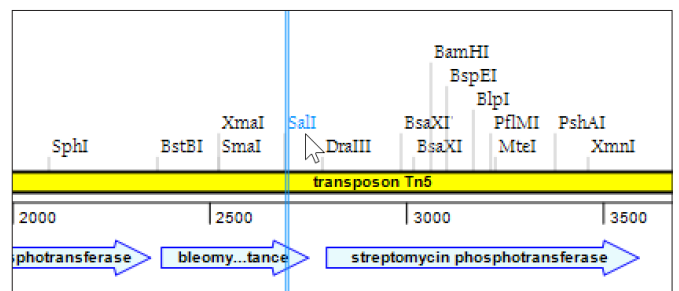
- Create and organize sequence databases to enable lightning-fast local BLAST searches
- Edit sequences and discover genes
- Translate one or many sequences simultaneously
- Use the curated annotation database or create and manage your own databases for plasmid auto-annotation
- Simulate movement through an agarose gel
- Create flexible plasmid maps



SeqBuilder Pro provides an easy-to-use wizard for setting up precise and scarless Golden Gate clones.

### PRIMER DESIGN AND VIRTUAL CLONING

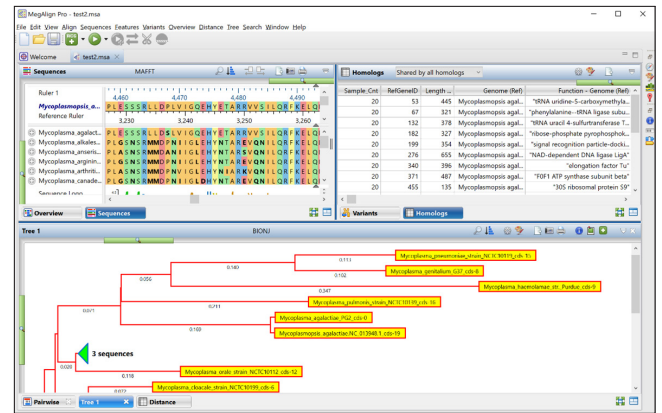
- Use any major cloning method, including Golden Gate, Gibson Assembly, InFusion, Gateway, Multisite Pro Gateway, TOPO cloning, TA cloning, and restriction enzyme techniques
- Design and customize primers and probes
- Create and share primer catalogs



SeqBuilder Pro lets you customize the appearance and types of restriction sites, features, translations, and more.

# MULTIPLE SEQUENCE ALIGNMENT AND PHYLOGENETIC ANALYSIS

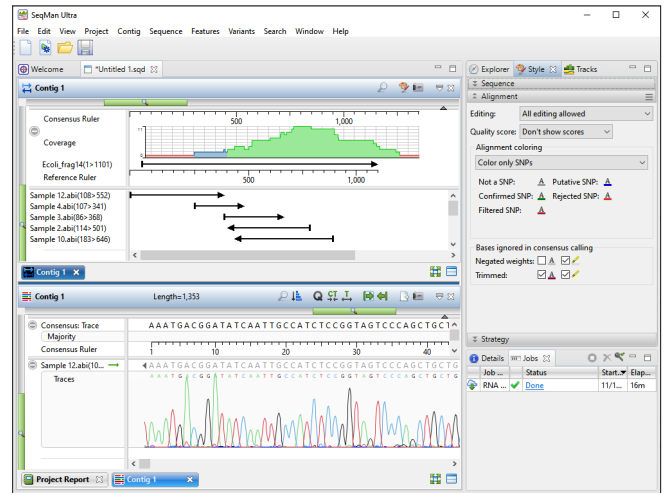
- Align DNA, RNA, or protein using Clustal Omega, Clustal W, MAFFT, MUSCLE, or Mauve
- Analyze gene homology in bacterial genomes or eukaryotic chromosomes
- Align cDNA sequences to chromosomes
- Evaluate variants across genomic strains
- Calculate trees using four popular algorithms, including Neighbor Joining (BIONJ), Maximum Likelihood: RAXML and RAXML-NG, and IQ-Tree



Above: A MegAlign Pro project displaying three of its interactive views: the alignment view, the variants table, and the phylogenetic tree view.

# SANGER SEQUENCE ASSEMBLY AND ANALYSIS

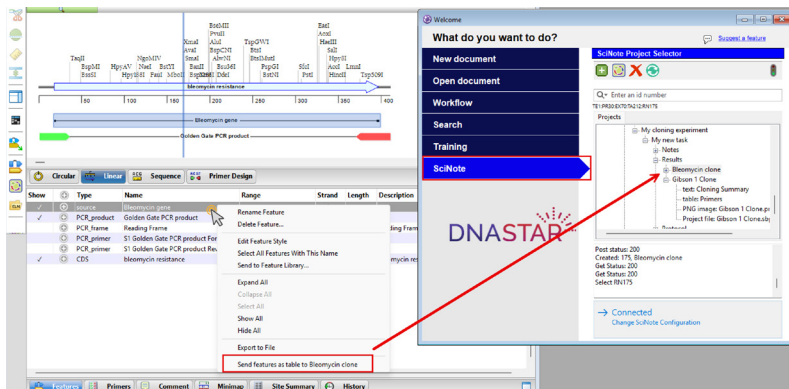
- Assemble reads *de novo* or against one or more reference sequences
- Assess read alignment, coverage, and SNPs
- Analyze and visualize variants across samples
- Design sequencing primers to improve coverage
- Efficiently trim trace sequences using manual or automated trimming options



Above: SeqMan Ultra lets you assemble and analyze Sanger data and can also perform downstream analysis for NGS and long-read assemblies created with Lasergene Genomics.

# Streamline Experiment Design and Documentation with SeqBuilder Pro + SciNote ELN

SeqBuilder Pro now integrates with the SciNote Electronic Lab Notebook (ELN), helping streamline data management, improve inter- and intra-lab collaboration, and enhance traceability.



Seamlessly transfer and manage SeqBuilder Pro data within SciNote's secure, compliance-ready environment.

Available with all paid SciNote subscriptions, this integration combines molecular biology workflows with electronic signatures, audit trails, and robust project documentation.



608.258.7420 USA  
866.511.5090 USA toll free

0.808.271.1041 UK  
0.800.182.4747 Germany

1202 Ann Street  
Madison, WI 53713

www.dnastar.com  
info@dnastar.com