An aerial view of a data center under construction. The image shows a large building with a flat roof. On the roof, there are several large server racks with blue and black panels. A construction crane is visible in the background. In the foreground, there are stacks of construction materials, including pipes, bricks, and a worker in a hard hat. The overall scene is a blend of modern technology and traditional construction.

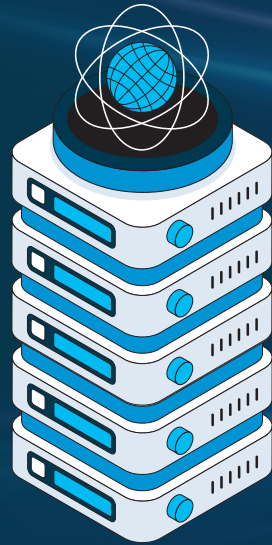
DATA CENTERS BY THE NUMBERS

A snapshot of the forces
shaping the digital world
and the 2026 construction
opportunity rising to meet it


GraybaR®

POWER PLAY

Global data center power capacity has grown **five times** over the past 20 years, from 21.4 GW in 2005 to approximately 114 GW in 2025.





MARKET SURGE

The U.S. data center market (new data centers and upgrades to existing ones) is projected to nearly triple, from \$134.77 billion in 2025 to **\$357.89 billion by 2034.**

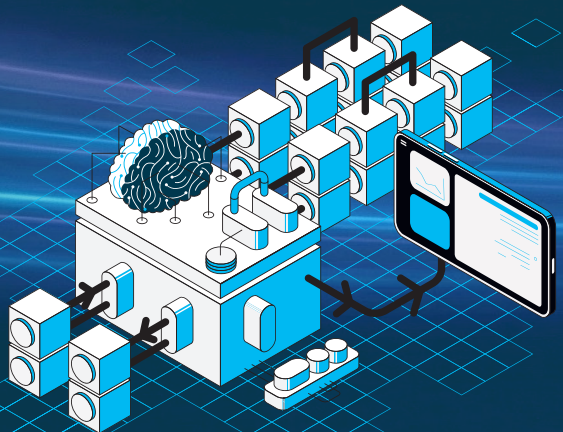
MULTI-TENANT OUTPACES ⚡ ENTERPRISE

In 2024, **95%** of multitenant/
colocation providers reported
increasing capacity, compared
with **57%** of enterprise-owned
data centers.

AI

TURBOCHARGE

Global power demand for data centers will increase **50% by 2027** and by as much as **165% by the end of the decade** (compared with 2023), largely driven by AI.



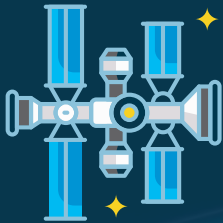
VACANCY? ESSENTIALLY ZERO.

Primary U.S. data center markets are operating at **less than 2% vacancy** — making power, land, and equipment availability the new competitive battleground.

BUILDING AT A PLANETARY SCALE

All the structured cabling installed in new data centers each year (since 2020) could **wrap the Earth up to 2.5 times.**





CAPACITY REACHES NEW HEIGHTS

If you stacked every new server rack built this year, you'd reach the International Space Station (ISS) as many as **four times**.



ENERGY,

CONCENTRATED

UPS battery energy deployed in new data center builds stores approximately 650 MWh, enough to power 540,000 U.S. homes for an hour. That's the equivalent **yearly energy of 6.5 million homes** if fully utilized continuously.

The Graybar Advantage

Inventory Is King

Graybar's national footprint of 350-plus distribution centers, as well as the company's recently announced STAR distribution centers, reduce lead times, accelerate deployment, and cut weeks off construction timelines.

Keeping Projects Moving

Graybar's fleet of 980+ company-owned trucks, combined with staging, storage, and kitting, ensures the right materials show up when needed.



Priority Access

Graybar's longstanding partnerships with 700+ manufacturers help customers secure high-demand items even during constrained market cycles.

Employee Ownership = Better Value

Graybar's employee ownership culture inspires employees to work together and take responsibility for making the company stronger for the future. That includes delivering exceptional customer service, working with a sense of urgency, and doing business with integrity, where your success means our success.

FEATURED MANUFACTURERS

ABB


ALLEN TEL PRODUCTS, INC.

APC[™]

 Belden

 **BURNDY**[™]

 CHATSWORTH PRODUCTS

COMMScope[®]
an Amphenol company

CORNING

EAT•N

FLUKE
networks


HUBBELL[®]

 **legrand**[®]

CABLOFIL[®]

 **legrand**[®]
ORTRONICS[®]


LEVITON[®]


nvent|ERICO


nvent|HOFFMAN

PANDUIT[®]

 PHOENIX
CONTACT

 prysmian

Schneider
Electric

 SIEMON

 SUPERIOR
ESSEX

 VERTIV.

YEP. **GraybaR** DOES THAT.®