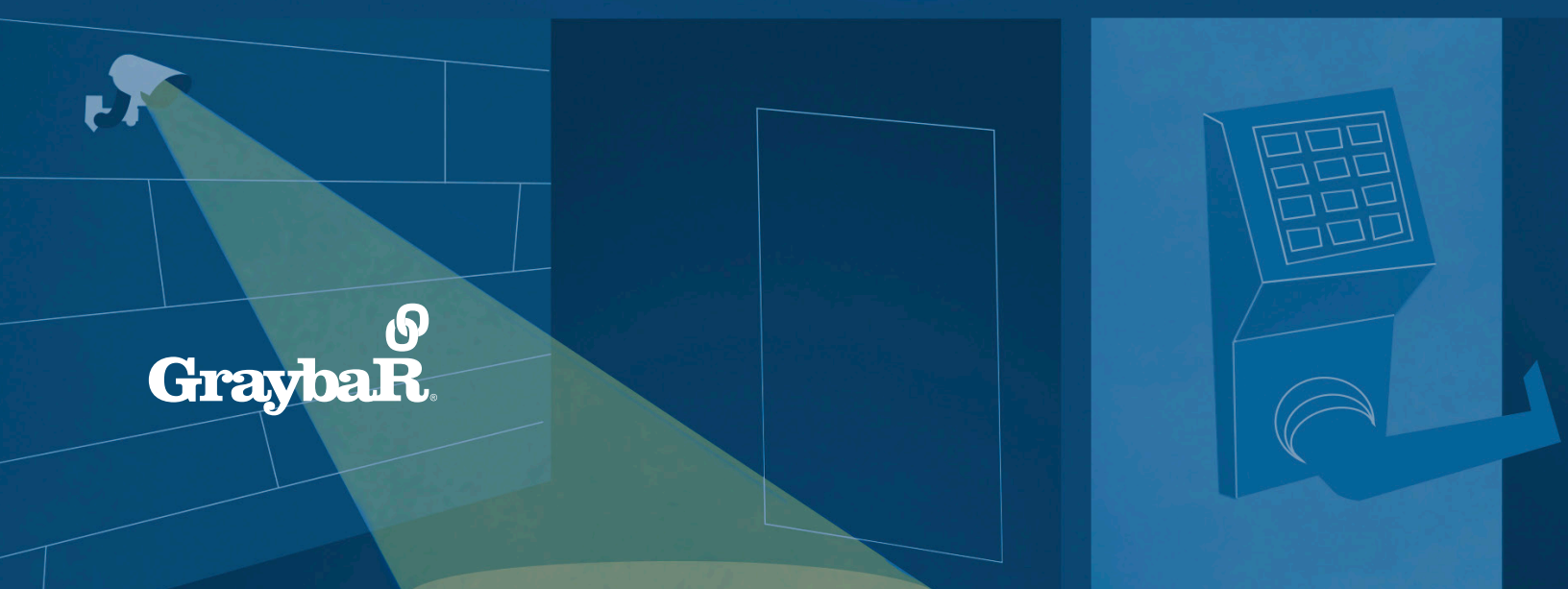
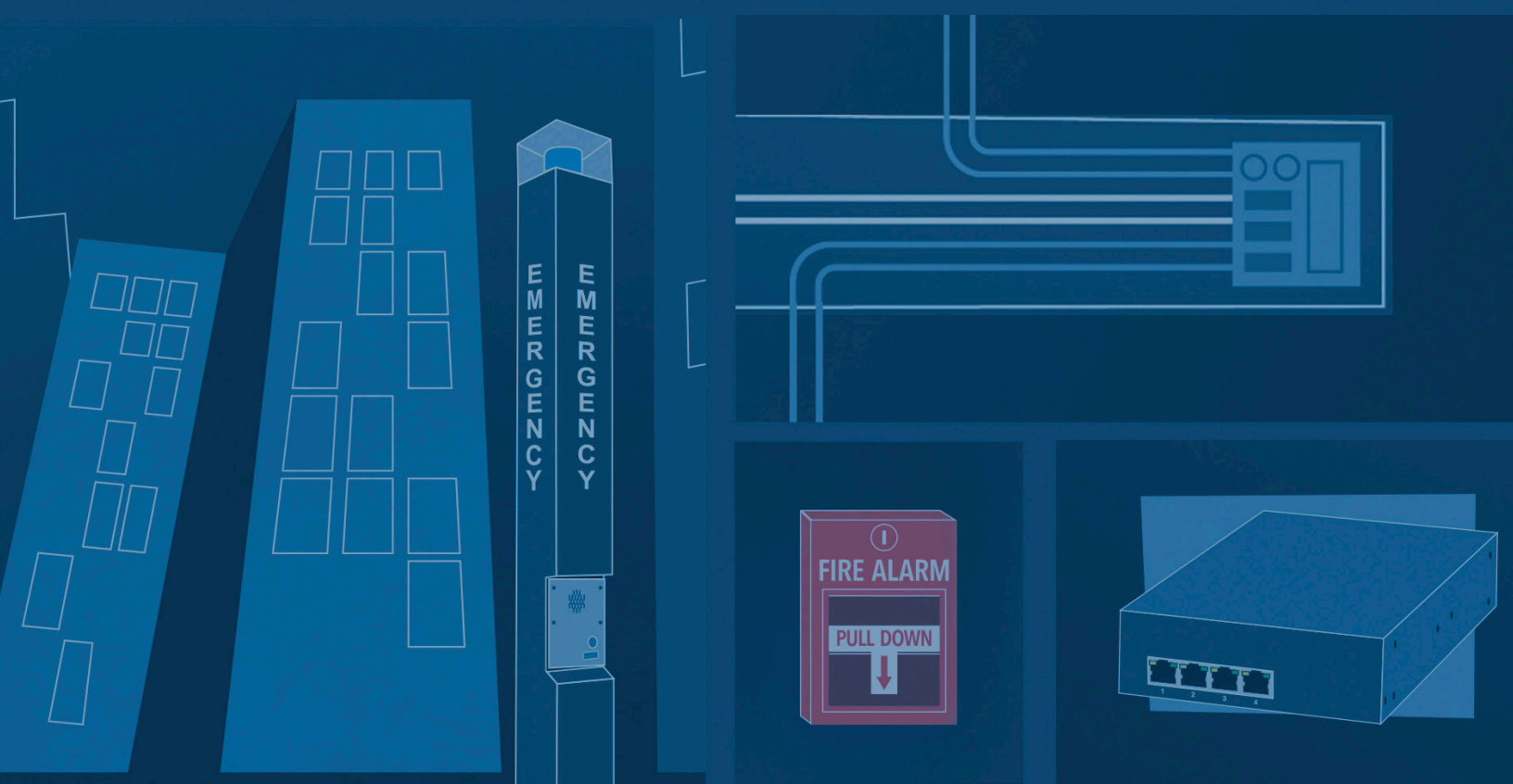


# SECURITY SOLUTIONS

PRODUCT CATALOG



  
**GraybaR**

# TABLE OF CONTENTS

<b>3</b>	ACCESS CONTROL
<b>4</b>	SURVEILLANCE
<b>6</b>	FIRE
<b>7</b>	SIGNALING AND NOTIFICATION
<b>9</b>	POWER, PROTECTION AND TRANSMISSION
<b>10</b>	CABLING, INSTALLATION AND TOOLS

## ACCESS CONTROL

### DS160 High Performance Request to Exit Detectors

Bosch



The DS160 Series consists of the DS160 Detector (light gray) and the DS161 Detector (black) specifically designed for Request-to-exit (REX) applications. With features such as timers, door monitor with sounder alert, and pointable coverage, the DS160 and DS161 have the flexibility to meet the most stringent REX requirements. The exclusive Sequential Logic Input (SLI) provides added security that is not offered in any other REX device.

### DS150i Request-to-Exit Detectors

Bosch



The DS150i Series consists of the DS150i Detector (light gray) and the DS151i Detector (black). They are specifically designed for Request-to-exit (REX) applications. The DS150i and DS151i detect motion in their coverage area and signal an access control system or door control device.

### Access Management System 3.01

Bosch



The Access Management System is a flexible and scalable access management system for medium- to large-sized organizations. It is easy to set up, operate and expand and offers very high reliability. The Access Management System can grow with your needs by offering three pre-configured software bundles for different sized organizations: Lite, Plus and Professional. It can be integrated with video management systems such as BVMS, and our B Series intrusion control panels.

### Keyscan Aurora

Keyscan (Dormakaba)



Dormakaba's Keyscan Aurora software is innovative and sustainable featuring a host of integration options. System expansion is easy and performance is robust with this single software solution. Regardless of size or complexity Aurora is ideal for any access control system application.

Advanced features include managing, auditing, and controlling door and elevator floor access as well as integration support for wireless electronic locks, VMS solutions, visitor management systems, intrusion alarm systems, Active Directory, elevator systems, and more!

### Mobile Credentials and Readers

Keyscan (Dormakaba)



Keyscan Mobile-ready readers are designed to merge security and convenience for user access at all authorized entry and exit points equipped with Keyscan mobile-ready readers throughout a facility. The free Keyscan mobile app holds up to 10 mobile credentials in a virtual wallet, so you have your key everywhere you take your iOS or Android phone.

### Wireless Locks (E7900)

Keyscan (Dormakaba)



Dormakaba's E7900 heavy duty electronic locksets are built for security and connectivity and offer a streamlined design while remaining cost-effective. The most versatile E-Plex model to date, it's compatible with Keyscan's Aurora access control software and performs in both standalone offline mode and real-time wireless mode. Programming through software means not going to every lock independently to upload changes and the locks can also participate in sitewide emergency lockdown.

### Electric Strikes

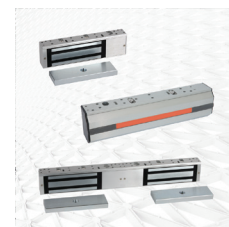
RCI (Dormakaba)



Dormakaba's RCI electric strikes are electromechanical door locking devices that work in conjunction with cylindrical or mortise locksets and rim exit devices. They are intended for door security in applications with heavy traffic that require access control systems. RCI electric strikes, when paired with credential accessories, grant access at the door or can release locks remotely with switches creating integrated access control solutions with the advantages and convenience of credential managed entry and remote activation.

### Electric Maglocks

RCI (Dormakaba)



Electromagnetic locks securely prevent a door from opening without proper access credentials. Maglocks can be paired with switches to release the lock remotely and/or credential accessories that grant access at the door. The magnetic strength of dormakaba's RCI electromagnet locks creates a holding force of up to 1200 lbs which means they are ideal solutions for low-risk security applications such as interior doors, rooms with specified access, storage closets, and staffed areas.

## Electronic Switches

### RCI (Dormakaba)

Dormakaba's switches deliver effortless operation for access control, door automation, alerts, and handicap accessibility. Create the perfect solution using RCI switches that can be mounted and used remotely or installed at the door. RCI provides functional control with options for momentary, maintained, or emergency release as well as time-delay. Regardless of function required, various styles are available in push buttons, touchless activators, illuminated buttons, mushroom buttons, stainless steel push plates, alert sounders, key compatible switches, and more!



## Net2

### Paxton Access, Inc.

Net2 is a user-friendly and flexible networked access control and video intercom system, which is managed from a central PC.



## Paxton10

### Paxton Access, Inc.

Access control and video management on a single platform. Combining next generation access control and video management on one user-friendly, online interface means you can manage the security of your site easily. With Paxton10 you can manage up to 100 sites from a single server, making multi-site management simple and cost-effective.



## Entry

### Paxton Access, Inc.

Video intercom - the complete video intercom solution. Door entry allows you to recognize a visitor calling at the main entrance before granting them access to your building. Our Entry system can work standalone or alongside our access control system, Net2, or as part of our access control & video management solution, Paxton10.



## A2E4P

### Speco Technologies

2 Door Controller, expandable up to 4 doors and includes power package. NDAA Compliant and is browser managed.



## ACSR35L

### Speco Technologies

Contactless Smartcard reader. Offers the option of mobile access credentials loaded on Bluetooth Low Energy (BLE) enabled smartphones or contactless smartcard module.



## SURVEILLANCE

## A817 - 4K Smart Zoom Dome

### ACTi

8MP (4K at 30fps) Outdoor IR Zoom Dome with the built-in analytics is one of the top quality products. 4.3x optical zoom and auto focus on a 3-axis gimbal. 130dB WDR, audio, MicroSD, and much more. Vandal proof. NDAA Compliant. Model name: A817.



## A421 - 4K Smart Zoom Bullet

### ACTi

8MP (4K at 30fps) Outdoor IR Zoom Bullet with the integrated bracket is one of the top bullet cameras. Built-in analytics. 4.3x optical zoom and auto focus. 130dB WDR, audio, MicroSD, and much more. NDAA Compliant. Model name: A421.



## Z72 - Wide Angle Turret with Built-in Mic

### ACTi

4MP Outdoor IR Turret with the 101° fixed lens and the 3-axis gimbal. Supports corridor mode. Built-in microphone, PoE, MicroSD, and more. Excellent chassis with IP68 and IK10. NDAA Compliant. Model name: Z72.



## FLEXIDOME IP Starlight 8000i

### Bosch

The 8000i X series cameras offer enhanced image quality for low-light scenes and fast-moving objects, available in 2 or 4 megapixels and next-level HDR X and starlight X technologies. HDR X enables the cameras to optimize video capture in scenes with fast moving objects with a dynamic range up to 144 dB, ensuring perfect exposure while reducing motion-related artefacts and blur in the daytime. This camera has built-in artificial intelligence (AI) featuring Intelligent Video Analytics and machine learning.



## FLEXIDOME Multi 7000i

Bosch

The FLEXIDOME multi 7000i are intelligent multi-directional cameras that combine four independent camera sensors, 3.3-7.7mm AVF lenses with a total resolution of 12 to 20 MP.

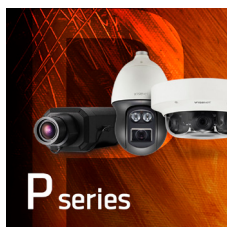
This solution houses four independent camera sensors, it requires only a single network connection, a single IP address and a single Video Management System license. Each imager capitalizes on the Bosch IVA and Camera Trainer technologies utilizing the built-in Artificial Intelligence, taking data usage to a whole new level.



## Wisenet P Series

Hanwha Techwin

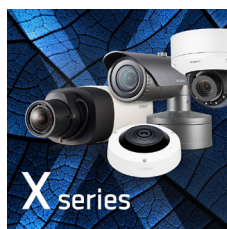
Hanwha Techwin's Wisenet P series camera line includes several unique categories that showcase our ability to deliver the best in AI video analytics, multi-sensor technology, and innovative design.



## Wisenet X Series

Hanwha Techwin

Wisenet X series network cameras feature Hanwha Techwin's proprietary Wisenet 7 chipset with features such as 4K resolution, eXtreme WDR, and 100% lens distortion correction.



## Wisenet Q Series

Hanwha Techwin

The Wisenet Q series delivers sharp and clear image quality with H.265 compression, ideal in securing small to medium sized applications such as retail, banking and offices. Enhanced features include intelligent video analytics, Wide Dynamic Range, Built-in IR, Hallway View, and WiseStream II.



## Husky IVO™ Series Video Surveillance Appliances

Milestone

As the optimal video surveillance appliance for Milestone XProtect® VMS the Husky IVO™ series is all about convenience and ease-of-use. Husky IVO provides a broad selection of configurations to fit installations of nearly every size and scale. XProtect is preloaded for hassle-free installation and provides the flexibility to adapt to future needs. The series offers peace of mind with trusted Dell Technologies hardware, Intel's processing power plus a single point of contact for Milestone support.



## XProtect® Rapid REVIEW

Milestone

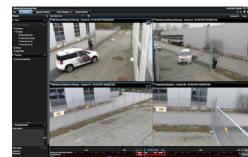
XProtect® Rapid REVIEW powered by BriefCam is an easy to use, advanced forensic analytics add-on solution that seamlessly integrates into the Milestone XProtect VMS. Security operators and investigators can productively and quickly analyze forensic video content to find what they are looking for, fast. Advanced filters and the VIDEO SYNOPSIS feature provide the ability to pinpoint objects, people and behavior of interest and review hours of footage in a matter of minutes.



## XProtect®

Milestone

Milestone XProtect® video management software (VMS) brings all the puzzle pieces for video surveillance together in a perfect combination to create a solution that keeps people and property safe today – and tomorrow. Operators can access and manage 3rd party integrated applications directly from the XProtect Smart Client. With the ability to access video from various locations, as well as computers and mobile devices there is an XProtect client to suit all your needs.



## Fisheye

Pelco

Delivering Superior Situational Awareness with Smart Analytics Powered by Motorola Solutions. The Pelco Fisheye Camera features AI-powered Pelco Smart Analytics to help detect critical events and increase security teams' productivity by expediting real-time responses and forensic investigations. This new panoramic camera is a cost-effective and easy-to-install solution that provides 360 degree views of large areas from a single vantage point, bringing superior situational awareness free from any blind spots.



## Sarix Value

Pelco

Deliver High Performance in Challenging Lighting Conditions with Pelco Sarix® Value Fixed IP Cameras.

The Sarix Value camera line delivers an affordable security solution that enables customers to minimize risks and meet regulatory requirements within budget. Featuring true wide dynamic range and adaptive IR illumination, this high performing entry level solution achieves excellent security detail in low-light and no-light settings. These easy to deploy environmental cameras include H.265 and H.264 video encoding and Pelco Smart Compression technology providing clear images all while keeping storage costs within budget.



## ExSite Enhanced 2

Pelco

Monitor Operations and Control Processes in Hazardous Locations. The ExSite Enhanced 2 series of cameras are purpose-built to monitor operations in hazardous locations with risks of explosion due to the presence of flammable liquids, gases or dust. Available in fixed, compact and PTZ models, these rugged outdoor cameras meet explosion proof and dust-ignition proof requirements while complying with international regulatory standards. This new family line features exceptional imaging in low light conditions and Pelco Smart Analytics for enhanced object detection, tracking and classification.



## N16NRN4TB

Speco Technologies

16 Channel 4K H.265 NDAA Compliant NVR with Built-in PoE Ports and Smart Analytics including Vehicle/Human/Tampering detection, License Plate recognition, EZ Search and Line Crossing.



## O5T2

Speco Technologies

5MP IP NDAA Compliant Turret with Advanced Analytics including a 2.8mm fixed lens and Vehicle/Human/Tampering detection, License Plate recognition, EZ Search and Line Crossing.



## O8FD4M

Speco Technologies

4K FIT Dome IP Camera, Included Junction Box, 3.6-11mm motorized lens, Dark Gray, NDAA Compliant. This camera comes equipped with Flexible Intensifier® technology to fit any lighting application and allows for a vivid color image without IR LEDs in low light.



## FIRE

### F220 Photoelectric Smoke Detectors

Bosch



The F220 Photoelectric Smoke Detectors are UL Listed, open-area photoelectric smoke detectors. Use them with commercial fire protective signaling systems and household fire warning systems (see NFPA 72, the National Fire Alarm Code). These smoke detectors scatter light using a pulsed infrared source operating with a gated, high-speed, photodiode infrared sensor. The symmetry of the optical chamber allows 360° uniform smoke entry, but minimizes external light entry.

### D263 Photoelectric Smoke and Heat Detectors

Bosch



These detector models use an infrared (IR) LED light source and a silicon photodiode to measure light in a chamber. A fine screen covers the chamber to deter insects and to reduce dust accumulation and nuisance alarms. During a fire, smoke particles reflect light onto the photodiode. When the photodiode measurements exceed the alarm threshold, the detector signals an alarm condition. After the alarm condition clears, interrupt power at the control panel to reset the detector.

### FPD-7024 Fire Alarm Control Panel

Bosch



The FPD 7024 Family FACPs can be used in commercial, retail, and public building applications. They are listed by UL for central station, local, auxiliary, and remote station systems. The FACPs support four on board initiating zones that can be expanded to eight using the FPC 7034 Four point expander. Each initiating zone supports two wire and four wire detectors configurable as Class A or Class B loops. Each zone can support up to 20 two wire detectors, or any number of four wire detectors.

## SIGNALING AND NOTIFICATION

### Emergency Telephones - Line Powered for Assured Connection

Allen Tel

Rugged emergency telephones—indoor & outdoor—particularly suited for campuses, offices, elevators, airports, parking garages and industrial facilities. Line-powered telephones provide traditional reliability to connect calls 99.999% of the time. Features include: handset or push-to-talk, auto-dial, speakerphone, vandal and weather resistant, ADA compliant.



### Nyquist C4000 IP-based Paging and Audio Distribution System

Bogen

The C4000 Series is a software-based solution for commercial paging, intercom and audio distribution applications that demand a high degree of scalability and flexibility. The heart of the C4000 solution is a powerful, system controller that leverages existing LAN, WAN, and/or legacy “home-run” speaker cabling for cost-effectiveness. Feature-rich, purpose-built appliances provide audio mixing, amplification, and distribution, as well as the ability to easily integrate with third-party systems, such as PBX, access control, and fire alarm.



### Nyquist VoIP Ceiling and Wall Baffle Speakers

Bogen

Nyquist Gen-2 Series VoIP wall baffle and ceiling speakers provide superior HD audio quality. Connect the speakers via Cat5 to a PoE Switch or PoE Injector, and they are ready to operate - no need to adjust external amplifiers, intercom wiring, or transformer taps. Standalone Operation supports VoIP applications such as talkback-enabled SIP endpoints, acting as paging points for an existing PBX/VoIP phone system. A Form-C relay output permits control/override of third-party devices like AV sources.



### Nyquist 2- and 4-Channel IP-based Audio Power Amplifiers

Bogen

Nyquist 2 and 4 channel audio power amplifiers meet the rigorous requirements of today's sophisticated sound systems. State-of-the-art DSP software for extensive and comprehensive signal processing, including factory loudspeaker presets, turns the amplifier into a complete audio solution. Standalone Operation enables AoIP applications such as a SIP endpoint to act as a paging mixer/amplifier for an existing PBX/VoIP phone system, or a paging mixer/amplifier on an existing PBX/analog phone system. Certified for residential use!



### CB 1-s Signature Help Point® Tower

Code Blue

The CB1-s is our most popular pedestal Help Point. Highlighted by a high intensity area light that provides added visibility, this blue light emergency tower provides direct contact with first responders and is an excellent choice for walkways, parking lots, open campus areas, and more.



### LS1000 VoIP Speakerphone with Camera

Code Blue

The LS1000 is a SIP compatible VoIP cameraphone that provides a reliable, hands-free link to first responders. Available with multiple button and keypad options, it includes a built-in contact closure that may be used to activate a strobe or camera, and can be used for door access applications. It is an excellent choice for parking decks, hallways and building entrances.



### Centry® with Camera

Code Blue

Centry® is Code Blue's smallest Help Point®. Highlighted by a powerful station beacon light and robust IP video and emergency phone capabilities, the multifaceted device provides a reliable hands-free link to first responders. Centry provides a litany of features previously unavailable in emergency or assistance phones, making it an excellent choice for building entrances, hallways and more.



## Security Command Units

### Federal Signal Corp.

Federal Signal's range of command units provide warning tones, voice messages, and live public address. SelecTone® Command Units can be integrated with remote sensors and/or activation devices, such as Call Points, to initiate four or more audible messages. The AudioMaster® Public Address AudioRouter® can direct tones and live voice to specific zones. Call Points are ideal for activating audible/visual signals by providing initiation to SelecTone® command units or fire and gas detection systems.



## Audible Devices

### Federal Signal Corp.

Federal Signal's SelecTone® Amplified Speakers are designed to produce tones, digital voice messages, and live public address. They can be used individually with a tone module or as a part of a plant-wide emergency notification system when the AM25CK is used to connect the amplified speakers. When a built-in amplifier is not needed in the speaker, the AudioMaster® Public Address Speaker Series is available for use with public address or paging applications.



## Visual Devices

### Federal Signal Corp.

Federal Signal's safe area FireBall® LED Warning Light, 27XST Explosion-Proof Div 1 Strobe Light, and Global Series® Hazardous Location Div 2 Strobe and LED warning lights cover all your signaling needs for a wide variety of applications and environments. Federal Signal's wide variety of choices allows you to customize your lighting solutions with a selection of colors, voltages, and mounting options. Federal Signal's products carry a 5-year warranty and are certified by Underwriters Laboratories (U.L.).



## 234SBA4T - Emergency Communications Tower

### Gai-Tronics

The multi-functional Emergency Communications Tower provides a two-way Hands-free Emergency Telephone, High-output Broadcast Speakers and a Bright LED Blue Light/Strobe. This Tower solution supports Analog, VoIP and Wi-Fi connectivity. It is highly visible - standing 9 feet tall - and ideal for outdoor campus environments.



## 240WM-001 - Wall-mount Telephone Station

### Gai-Tronics

The Wall-mount Telephone Station provides a two-way Hands-free Emergency Telephone and a Bright LED Blue Light/Strobe. This Station supports Analog and VoIP connectivity. It is highly visible and provides reliable communications with security or Police.



## HUBBCOM Door Entry

### Gai-Tronics

HUBBCOM is a two-way Audio/Video Intercom solution that is ideal for door and gate entry points. It provides two-way communications along with a high-resolution camera. HUBBCOM's flexible IP design allows for easy installation and integration to card access systems and door lock systems.



## Emergency Phone and Mass Notification Tower Solutions

### Talk-A-Phone

Towers are an ideal security solution for remote, high-risk areas. Integration capabilities with video, paging, and other technologies, Talkaphone's robust towers serve as effective deterrents to crime and give the community a greater sense of security. An emergency call can be placed with a simple push of a button. At the same time, an LED blue light begins to flash, attracting attention to the location. The emergency phone faceplate is always illuminated for clear visibility during the night.



## Emergency Phone Wall Mount Solutions

### Talk-A-Phone

Wall mount emergency call stations are ideal security solutions for remote, high-risk areas, especially at college campuses, parking facilities, shopping malls, medical centers, industrial campuses, and transit facilities. Talkaphone's wall mount call stations offer contemporary, architectural styling and are constructed of durable stainless steel. An always-lit LED blue light provides high visibility and gives passers-by a sense of security. Users can call emergency personnel with a simple push of a button.



## Access Control Intercom Solutions

### Talk-A-Phone

Talkaphone's line of versatile access control intercom solutions are ideal for entrances at corporate, campus, healthcare, or government facilities. The Talkaphone architecturally aesthetic VIA pedestal series offers a highly integrated solution that includes key access control technology. A variety of pedestal customization options include touchless entry, card reader, push plate switch, and keypad.



## ACS Advanced Communication Systems

### Valcom

Valcom's ACS is a compact, yet powerful communications and emergency system. From anywhere on your network, the easy-to-use software provides the flexibility to program up to 72 zones of two-way intercom, one-way paging groups, multiple bell schedules, calendar of automated events, clock synchronization, and emergency tones, messages, or alerts. Supports call switches, panic buttons, and 3rd party security/building systems triggers to activate intercom calls. Intercom Caller Identification and relay outputs are also included.



## Universal Paging Interface

### Valcom

Valcom's Universal Paging Interface is designed to provide access to paging systems from analog trunk or station inputs (FXO/FXS) and Session Initiation Protocol (SIP) voice over IP connections either through an on-premise PBX or Cloud PBX input. When paired with SIP connections the Universal Paging Interface supports Valcom handsfree page units for talkback paging and up to 150 Valcom one-way amplified speakers. Multiple units can be connected for multi-zone paging.



## RingCentral® Paging Adapter

### Valcom

Valcom's RingCentral Paging Adapter seamlessly connects RingCentral users to their new or existing public address systems.

Simply Connect:

- Any Legacy 25/70V System
- Valcom Analog One-Way or Talkback Systems
- Valcom IP Speaker/Horn Endpoints
- Self-Amplified Speakers/Horns



## POWER, PROTECTION AND TRANSMISSION

## Trove - Access and Power Integration

### Altronix

Altronix scalable access and power integration solutions easily combine Altronix power distribution with access controllers from the leading brands. Trove simplifies board layout and wire management, reducing installation time and costs.



## Pace - Long Range Ethernet

### Altronix

Altronix Long Range Ethernet solutions allow the deployment of IP devices up to 5X standard Ethernet distance. Pace also supports IP devices over single twisted pair up to 1000m, in hard to reach places such as city infrastructure, elevators, HVAC applications and more.



## NetWay Spectrum - Hardened PoE Switches and Fiber Solutions

### Altronix

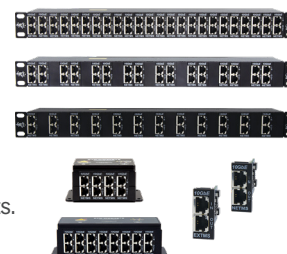
Altronix Hardened PoE Switches and Ethernet to Fiber Media Converters allow the deployment of high-powered IP devices in remote locations with or without local power. Single and multi-port models support the latest security devices such as cameras, illuminators, wireless access points and more, at longer distances utilizing fiber infrastructure.



## Ethernet and PoE Surge Protection

### Ditek

DITEK's NETS and EXTS Series sets a new standard in surge protection for Ethernet, PoE and PoE Extender circuits. This robust lineup lets installers match the number of connections needed for a project while providing room for growth, and supports hybrid protection by accommodating a mix of both Ethernet/PoE and PoE Extender protection modules within the same rack or wall-mount enclosure. Each model supports data speeds up to 10GbE without signal degradation.



## Versa-Module 2 Series

Ditek

A unique, modular solution for protecting various combinations of signaling, data and low voltage power circuits. With the option of 4, 8 and 24 channel enclosures, the VM2 Series offers a vast array of customizable solutions for every application. Its rapid-replacement modules, available in both RJ45 and screw terminal configurations, and single point grounding makes installation and service replacement a breeze.



## 12U UPS-Depth Wall-Mount Rack Enclosure, Hinged Back SRW12USDP

Tripp-Lite

Wall-mount cabinet secures and organizes 12U of 19-inch rack equipment in network closets and other locations with limited floor space. Houses UPS systems and related battery packs and cabling up to 24.5 inches deep. 5 year warranty.



## 1500VA 1350W Line Interactive Smart Rackmount UPS SMART1500RM2U

Tripp-Lite

Protects connected mission-critical equipment against damage, downtime and data loss due to blackouts, brownouts, power surges and line noise. Ideal solution for security applications, data centers, VoIP systems and network closets. 2-year warranty, 3 year with registration and \$250,000 Ultimate Lifetime Insurance.



## Wireless Access Point Enclosure NEMA 4, Surface-Mount, 13 x 9" EN1309N4

Tripp-Lite

Protects your indoor or outdoor Wi-Fi access point against water, dust, rain, sleet, snow and ice (NEMA 4 rated), as well as theft, damage or tampering. Designed for Cisco WAPs, but accommodates equipment from most vendors. 5 year warranty.



## CABLING, INSTALLATION AND TOOLS

### Surveillance, Access Control, Intrusion and Fire, Remote Security

Allen Tel

When security means protecting commercial and industrial networks, Allen Tel's Category 6A connectivity solutions provide reliable, standards-based network performance.



### Access Control Composite Cables

Belden

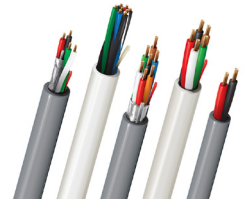
A cost-effective security solution for access control systems, Belden Access Control Composite Cables offer labor-saving and easy-identification features that bring a whole new level of ease and convenience to the jobsite.



### Security and Alarm Cables

Belden

Belden Alarm Cables are part of a large, economical selection of multi-conductor and coaxial products designed for residential, light commercial and institutional applications. Cables meet NEC and UL guidelines for safety in any application.



### OneReach™ PoE Extender System

Berk-Tek

The OneReach™ PoE Extender System simplifies device management and power supply, resulting in reduced costs and streamlined network management. Available in both single-mode and multimode fiber modular configurations, comprised of a Head End Power Injection device, OneReach Cable Assembly, and a Remote PoE Port. Your specific configuration will be determined by the number of remote devices to be supported, the distance of the remote port from the closet, and the environmental conditions of the installation.



## LANmark™-SST

Berk-Tek



LANmark™-SST Category 6A cable offers outstanding signal isolation, excellent high-PoE and Alien Crosstalk performance that exceeds the standard, making it an excellent choice for high-power, high-bandwidth applications like 802.11ac wireless, HD video and IP security. Its specially designed insulated metallic isolation wrap provides superior heat management and noise-cancelling performance preventing electrical energy from running along the shield, eliminating the need for grounding.

## Fire Alarm Cable

Prysmian



These designs have proven themselves in the area of fire system security over time. The cables are all fabricated with solid, bare copper conductors and insulations and jackets of premium-grade PVC. Offered both with and without shields, the former to protect these critical circuits from noise, these cables will provide the latest in available technology for the system installer and contractor.

- Geographic Specific Constructions
- Installed in Commercial Buildings
- Fire Alarm Systems

## Sound, Alarm and Security Cable

Prysmian



Sound and security cables are fabricated with solid or stranded, bare copper conductors with insulations and jackets of premium grades of PVC. We offer both parallel and cabled designs both with and without shields. Sequential footage markings on the jackets are offered on all products.

- Geographic Specific Constructions
- Installed in Commercial Buildings
- Security Systems
- Card Readers
- Door Control
- Power Limited Controls
- Surveillance Systems

## Z-PLUG Field-Terminated Category 6A Plug

Siemon



Siemon's innovative Z-PLUG offers quick, reliable high-performance plug terminations in the field for custom-length direct connections to IP based security cameras, access control systems, sensors, WAPs, and PoE-enabled smart security devices. Z-PLUG exceeds all Category 6A performance requirements, and it can be terminated to shielded, unshielded, solid, and stranded cables in less than 60 seconds.

## Z-MAX 6A Shielded Outlets

Siemon



The shielded Z-MAX outlet offers best-in-class performance in every critical specification, exceeding all Category 6A performance and providing superior support of next-gen PoE-enabled security devices. The innovative linear lacing features and user-friendly Z-Tool enable fast terminations, while removing installation variability for consistent, repeatable performance.



Graybar, a Fortune 500 corporation and one of the largest employee-owned companies in North America, is a leader in the distribution of high quality electrical, communications and networking products, and specializes in related supply chain management and logistics services.

Graybar has the power and stability of a big company and the integrity and drive of an employee-owned business. Graybar is certified against the latest ISO 9000 standard.

Discover how Graybar can work to your advantage.



     | [GRAYBAR.COM](http://GRAYBAR.COM)

© 2022 Graybar Electric Company, Inc. All rights reserved.  
All third party registered marks are the property of their owners