



Data Center

PRODUCT CATALOG





Table of Contents

- 3** Communication, Networking and Connectivity
- 6** Power Distribution and Control
- 8** Conveyance Systems, Racks and Cabinets
- 11** Wire and Cabling
- 12** Cooling and Thermal Management
- 14** Miscellaneous and Accessories

Angled Patch Panel

Allen Tel

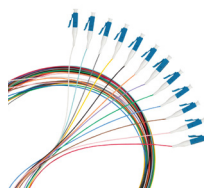


Allen Tel's Angled Patch Panel supports high density installations. The angled a-frame routes cables to the sides for improved routing and bend radius. This panel supports Allen Tel's full line of Copper and Fiber modules as well as multimedia solutions.

Copper and Fiber Patch Cords

Allen Tel

Allen Tel Products offers a full line of Copper and Fiber cabling solutions. Our copper patch cords offer high performance and industry leading quality. And our fiber patch cords are available in a wide variety of configurations for any solution.



Category 6A Solutions

Allen Tel

We offer a complete, standards based solution for all Category 6A projects. Our full line of interoperable 6A products work seamlessly with all industry compliant, cable manufacturers. Our category 6A EZ jack pairs seamlessly with our EZ tool for fast, reliable terminations-cutting down installation time and saving on labor.



EcoStruxure IT

APC by Schneider Electric



Comprehensive DCIM and monitoring platforms including EcoStruxure IT and NetBotz, offers secure monitoring, management, insights, and planning for IT infrastructure, from single racks to hyper-scale IT, on premises, in the cloud, and at the edge. It meets industry needs for resilient, secure, and sustainable IT infrastructure. Services like EcoCare provide comprehensive support and digital services to optimize OPEX costs and enhance operational efficiency to support distributed IT infrastructure.

MPO-12, 12-Fiber Male to Male Connector Standard Performance Trunk Cable

Belden

Industry-leading, low-loss MPO trunks are the foundation of faster, easier and better pre-terminated fiber connectivity solutions revolutionizing the data center. Quality is enhanced through exhaustive design validation against TIA standards.

Features and Benefits: Data Century Ready packaging keeps areas cleaner for better contamination control. Move from 40G and 100G with MPO pre-term solutions for better upgradability. Optimum performance with 0.2 dB OM4 MPO connectors. Suitable Applications: Data Center, LAN, Equipment Room, Telecommunication room, Workstation Area.



FiberExpress® DCX Adapter Frame, 6-Port, Singlemode - OS2, LC Duplex

Belden

Adapter Frames have a modular, compact design. Features and Benefits: Frames are available with LC, SC or MPO connector interface. Pre-terminated adapter frames available in four-port (Base-8) and six-port (Base-12) configurations. Optimize system density regardless of termination method. Reduce network downtime due to maintenance thanks to MPO pre-term adapter frame modularity; only 12 fibers are affected (opposed to 24 or 36 fibers in other solutions). Suitable Applications: Optical Distribution Frame, Data Centers, Central Equipment Room



FiberExpress®, Duplex Standard MPO Patch Cords

Belden

Uncomplicated, robust, versatile and conveniently available. Superior quality and performance. FX patch cords deliver a robust design to withstand the rigors of daily use in both off-the-shelf standard configurations and rapid custom-tailored installations.

Features and Benefits: Low-loss OM4 0.2 dB MPO and 0.15 LC connectors for architectural flexibility. Can be deployed in dense cable trays with small-diameter cord options for easier installation. Suitable Applications: Data Center, LAN, Equipment Room, Telecommunication room, Workstation Area.



COMMUNICATION, NETWORKING AND CONNECTIVITY

Propel™

CommScope

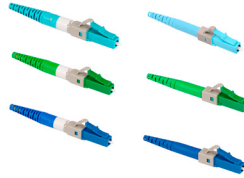
Propel™ high-speed fiber optic platform delivers the capacity, flexibility and simplified management to support evolving networks across multiple upgrades. The high-density, modular design and 16-, 8-, 12- and 24-fiber optic ultra-low loss connectivity make it ideal for data center and enterprise networks. Engineered and supported by CommScope, it provides the performance, agility and manageability you need.



Qwik® Fuse

CommScope

Easy to use and quick to install, CommScope field installable connectors and tool kits are designed to simplify the termination process and enable you to terminate and move to your next project with minimal investment in time and cost. · Fast to install · No requirement for pre-engineered lengths · Eliminates unwanted slack storage · Consistent and reliable terminations



EDGE™ solution

Corning

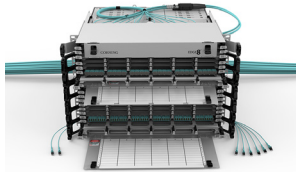
Corning EDGE™ solutions create a fiber optic tip-to-tip solution for data centers and storage area networks (SANs) consisting of housings, modules, panels, trunks, harnesses, and jumpers.



EDGE8® solution

Corning

EDGE8® solutions are Base-8, high-density preterminated optical cabling solutions offering the most future-ready solution to support 40G, 100G, and 400G transmission requirements. With all the benefits of the Corning EDGE™ solution, EDGE8 offers superior network scalability and improved link performance.



EDGE™ Rapid Connect

Corning

Corning's EDGE™ Rapid Connect is a rugged, high-density cabling solution optimized to let you complete data center interconnects faster than ever. This solution helps to reduce installation time by up to 70% by eliminating splicing in the field.



Custom Fiber Trunk Assemblies

Hubbell Premise Wiring

Hubbell's flexible modular cabling system provides the customization and bandwidth you need for today's high-performance networks. FIBERHUBB™ MPO assemblies future-proof your network with less cabling and lower installation costs than legacy infrastructure.



Infinium acclAIM

Legrand Ortronics

Infinium acclAIM redefines connectivity by replacing pre-terminated cassette-based solutions with direct connections eliminating components, process, and cost. Infinium acclAIM delivers the only connectivity on the market with a near lossless link, unlimited scalability, and no gender considerations. The direct mating breakout and application defined polarity vastly improves density and flexibility and enables sustainable migration improving system life-cycle.



Optics - 800G Transceivers

Legrand Ortronics

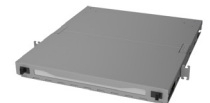
Optical transceivers from Approved Networks feature an industry-leading Limited Lifetime Warranty and adhere to strict MSA standards for form, fit, and function. Fully compliant with Ethernet, Fiber Channel, SONET/SDH/OTN, and PON standards, they deliver exceptional performance across voltage and temperature ranges with constant latency and low interference. With data rates up to 850GB/s, the 800GB line supports AI-driven, data-intensive applications in data centers, with reach from 50–500 meters via Dual MPO-12 APC connector.



Q-Series Magnesium HD Enclosure

Legrand Ortronics

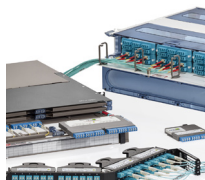
The Q-Series Magnesium High Density (HD) Fiber Enclosure delivers superior network performance with multiple densities and connector options. Its modular fiber solution ensures efficient installation, cable management, protection, and organization for patch cords, trunks, splices, and connectors. A clear acrylic door enhances aesthetics and visibility without opening the enclosure. Compatible with LM4 cassettes, M4 Splice Cassettes, HDFP panels, and trunks, it supports flexible configurations from 96 LC to 192 MDC fibers per Rack Unit.



OPT-X™ Global Fiber Systems - High-Performance, End-to-End Solutions

Leviton

Whether your installation is small or large, simple or complex, you can rely on Leviton for a fiber cabling system that meets your requirements. Engineered for ease of deployment, maintenance and manageability, OPT-X Global Fiber Systems ensure migration options for future bandwidth growth. Leviton OPT-X global fiber solutions are available through Graybar.



OPT-X™ Unity Fiber Optic Multimode and Single-Mode Migration Solution

Leviton

Prepare for 400 Gb/s and beyond with Leviton's Pre-terminated Fiber Migration System. The OPT-X Unity solution of trunks, array patch cords, and cassettes exceed industry standards, offering ultra-low-loss connectivity for superior channel performance, extended distances, and easy migration to 400 Gb/s, 800 Gb/s, and 1.6 Tb/s networks. The components are available as part of global systems with HDX and e2XHD patching.



OPT-X™ HDX Patching Platform

Leviton

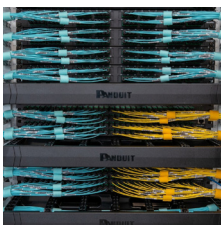
Making fiber installation and MAC work easier. The OPT-X™ HDX fiber patching platform makes it easy to migrate to 40, 100, 200 and 400 Gb/s channels. Compact HDX cassettes, adapter plates, and splice modules are interchangeable in any Leviton HDX enclosures, panels, patching frame and zero-RU options. This simplifies network manageability and creates a consistent form factor in the MDA, EDA, ZDA, SAN, TR and throughout your network.



Fiber Optic Solutions

Panduit

Keep pace with tomorrow's data demands with Panduit's scalable fiber infrastructure. From low-loss cassettes to high-performance server racks, our modular solutions scale effortlessly without costly overhauls. Features MMC next-gen technology with 3x density, versatile Base-8 cabling for enterprise applications, and Base-16 solutions built for 800G and beyond networks.



FL SWITCH

Phoenix Contact

Our Industrial Ethernet Switch portfolio comprises Managed and Unmanaged Switches with Gigabit and PoE, copper and FO ports, as well as redundancy functions in different form factors. This gives you the flexibility to build powerful and secure networks, even in harsh environments.



High Speed Cable Assemblies

Siemon

Siemon offers a comprehensive line of High-Speed Cable Assemblies, including straight-through/breakout Direct Attach Cables, Active Copper Cables, Active Electrical Cables and Active Optical Cables in speeds up to 800G, in QSFP-DD, OSFP-FT, OSFP-RHS, QSFP112, QSFP56, QSFP28, QSFP+, SFP-DD, SFP112, SFP56, SFP28, and SFP+ form factors up to 800G. Typical applications include data centers requiring reliable, low latency, high-quality cabling options. Siemon HSCAs are MSA compliant to ensure compatibility across equipment from various vendors.



LightStack® Ultra High Density Enclosures

Siemon

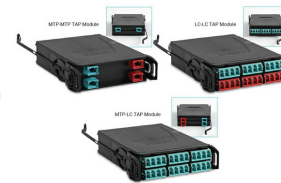
Designed to easily integrate into any standard 19-inch rack or cabinet, Siemon's LightStack Fiber Enclosure is constructed of high-quality steel, and is designed for easy installation and quick deployment of plug and play fiber solutions for today's advanced data center and storage area network environments. Fiber jumpers exit the enclosure directly into vertical managers providing angled panel functionality.



LightVerse® TAP Modules

Siemon

Now more than ever, network performance is critical to your success as a network operator. With such requirements for network integrity, managing your overall network reliability can be a challenge. Siemon's LightVerse system includes a full range of passive TAP modules designed to allow network operators an easy and flexible method enabling passive network performance monitoring. Network performance monitoring is critical to meeting operator service level agreements.



POWER DISTRIBUTION AND CONTROL

APC Smart-UPS

APC by Schneider Electric



Reliable, compact lithium-ion UPS solutions up to 10kW designed for edge computing, server rooms, and distributed IT. Get scalable power up to 20kW with APC Modular Ultra. These offer extended runtime, scalability, and cloud-based monitoring to ensure uptime and operational efficiency. Its ultra-compact design and flexible mounting options for local edge environments and micro data centers ensures consistent and reliable connectivity at the most critical moments. Enable More Power, More Space and More Equipment at the Edge.

Galaxy VS 3Phase UPS

APC by Schneider Electric

A high-performance, modular 10-150 kW three-phase UPS, designed for critical IT, commercial, and industrial facilities. It offers top efficiency, availability, and innovative power protection, minimizing total cost of ownership with patented technologies and modular design. With its robust design and industry-leading performance, Galaxy VS is the ideal backbone for your critical infrastructure.



APC Netshelter Rack PDU Advanced

APC by Schneider Electric



Designed for high-density data center applications with models available up to 57.6kW. These PDUs feature up to 48 outlets and 4-in-1 combination outlets, delivering the speed & flexibility needed to accelerate rollout and support evolving infrastructure demands. Implement solutions faster and deliver more power to each rack-while minimizing downtime. Custom PDUs offers available for to provide thousands of potential configurations tailored to order from the factory, these solutions offer a powerful advantage for complex and evolving infrastructure needs.

Powergain™ Hi-Power Data Center Solutions

BURNDY



Flat connectors, panel-mount receptacles, PDUs, power cords, assemblies and row power distribution products engineered to support rising rack power densities and the explosive growth in power consumption.

eConnect® PDU with QuadLock Outlet

Chatsworth

QuadLock Outlet PDUs revolutionize power distribution with four universal outlet types—C13, C15, C19, and C21—within CPI's eConnect® PDU lineup. Designed for high-power AI, HPC, and liquid-cooled systems, QuadLock enhances reliability with secure locking mechanisms and color-coded outlets for effortless identification. Supporting scalable power configurations, it prevents downtime and optimizes performance in mission-critical data center environments. QuadLock delivers the flexibility needed for evolving workloads, ensuring seamless equipment compatibility and enhanced operational efficiency.



Rack Power Distribution Units (PDUs)

Eaton Power Quality/
Tripp Lite

Eaton's selection of PDUs includes models up to 46 kW to handle the demands of GenAI equipment. In addition, a managed PDU connected to the network saves time, increases visibility and reduces the need for onsite visits through outlet-level remote monitoring, environmental monitoring, and control of connected devices.



Basic and Intelligent Power Distribution

Hubbell Premise Wiring

- Single and three-phase power from 15A to 60A, available with and without breakers
- Multiple receptacle configurations and densities including standard NEMA, C13, and C19
- Intelligent PDUs feature advanced monitoring on LCD screen and built-in web browser to monitor and power cycle equipment remotely
- Stock available of common platforms
- Build to order program with typical lead time 3-5 weeks



Vertiv™ Liebert® APM2 UL UPS, 10-600kW

Vertiv

Introducing a next-generation modular and transformerless UPS design, Vertiv™ Liebert® APM2, a feature-rich high-density UPS that brings exceptional and innovative features for mission-critical applications. Powered by latest generation three-level IGBT topology in conjunction with Silicon Carbide converter, it delivers an extraordinary double conversion efficiency of up to 97.5% that ensures remarkable operational cost savings, reducing both the Total Cost of Ownership (TCO) and the environmental impact.



Enlogic Intelligent Power Distribution Units (PDUs)

nVent

Introducing the industry's most innovative energy metering rack power distribution units (PDUs) designed to simplify rack management in your data center. Enlogic's intelligent PDUs sit within the rack actively monitoring the data center environment, continually looking for threats from electrical circuit overloads, and any physical and environmental conditions which might place critical IT computing loads at risk. Quick-ship Program available, products ship within 2 to 3 weeks.



Vertiv™ PowerIT High-Density Rack PDUs

Vertiv

The Vertiv PowerIT High Density rPDU is built to meet the rising power requirements of modern data centers, particularly those supporting high performance computing (HPC) and artificial intelligence (AI) applications. With the capability to deliver up to 57.6 kW per unit, these rPDUs provide dependable power distribution for high-density environments, maintaining optimal performance and reliability.



Critical Power Solutions

Panduit

Power uptime, all the time. Panduit's critical power solutions deliver stability and grow with your infrastructure needs. Smart power management maximizes performance while minimizing waste. Includes intelligent PDUs with advanced encryption and real-time monitoring, reliable UPS systems for power continuity, and safety accessories with environmental monitoring and rack security.



CONVEYANCE SYSTEMS, RACKS AND CABINETS

APC by Schneider Electric's Next Generation Racks & Cabinets

APC by Schneider Electric

Scalable enclosures including soundproof and open-frame racks, engineered for IT and AI workloads. These solutions support dense deployments, offer physical security, and integrate power and cooling for edge and core data centers. Engineered to meet the needs of IT and AI applications across various environments—from compact network closets to large data centers with new racks featuring taller frames and increased weight capacity, enabling greater scalability and flexibility. Rack models are available to help streamline operations, making workflows more efficient, predictable, and user-friendly



Burndy Bus or Ground Bars

BURNDY

Ideal for common ground point and power applications. Available in copper, tinned copper, and stainless steel, these grounding bus bars are customizable with a variety of hole and slot patterns, and finish options including unplated or tin-plated. Burndy accommodates specific project requirements by offering custom bus bar lengths up to 12 feet and customizable hole patterns. Each bus bar can be equipped with or without brackets and insulators, and an optional Plexiglass cover is available for enhanced protection.



Cabinet Grounding Kits

BURNDY

BURNDY Grounding kits offer conveniently packaged components which simplify the decision making process at material acquisition and installation on the job site. These grounding kits bundle the same quality UL Listed connectors you trust with value-adding components such as: conductor, installation hardware, oxide inhibitor, labeling and installation instructions as an example. The kits are available in different variations with customized kits available upon request.



ZetaFrame® Cabinet System

Chatsworth

The ZetaFrame® Cabinet System is an integrated, all-in-one solution with the industry's highest load capacity designed to support high power densities and ensure scalability. ZetaFrame offers unparalleled flexibility, allowing for configuration from a range of pre-designed options or complete customization to suit your workload. It integrates cable management, thermal management, power management, environmental monitoring, and access control to optimize efficiency, security, and availability in data centers, accommodating the evolving needs of AI, ML, and cloud technologies.



Propel Xframe™

CommScope

The modular Propel XFrame solution supports Propel™ modules and adapters. It accepts multiple connector types and up to 1,920 LC duplex, 3,072 SN duplex or 1,920 MPO connectors. Its simple layout and operation enable non-skilled technicians to easily and quickly add, change, reroute and reconfigure fiber connections, breakout assemblies and panel components as needed. With a completely modular design, it also significantly reduces the number of SKUs that need to be ordered and managed.



SmartRack® Heavy-Duty Enclosures

Eaton Power Quality/Tripp Lite

A traditional IT rack cannot handle the weight of GenAI servers, which can exceed 100 lb. per rack unit (U space), nor the increased depth necessary to accommodate their cabinets and cabling. Eaton's heavy-duty SmartRack enclosures are made to support weights up to 5000 lb. and up to 54 inches of depth, providing ample room for GenAI servers.



HCC Data Cabinets

Hubbell Premise Wiring

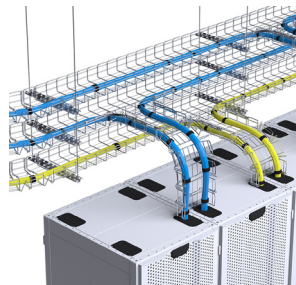
HCC Data Cabinets provide a strong and sturdy feature rich solution for all your equipment racking needs today and in the future.



Wire Mesh Tray

Legrand Cablofil

Engineered for optimal air flow, this adaptable system minimizes heat buildup to maximize cable loads. The open access design simplifies cable routing, management and future upgrades, while the modular construction allows for fast, scalable modifications as infrastructure evolves.



Itray Ladder Tray

Legrand Cablofil

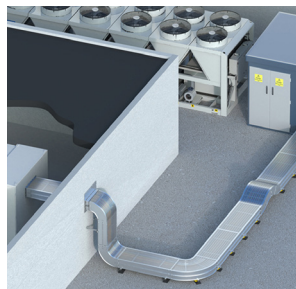
The aluminum I-beam design of Itray is perfect for industrial installations with large diameter cables in long span situations, minimizing total tray width and creating a smooth transition between straight sections and fittings.



Cable Bus

Legrand Cablofil

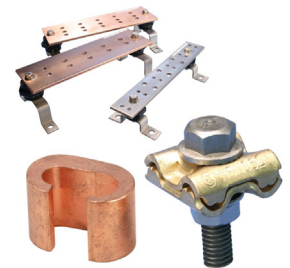
Cablofil® Cable Bus is the most contractor-friendly modular power pathway you can find with built-in field fabrication flexibility. With short lead times that will meet even the toughest project deadlines, this solution is constructed from our dependable ladder tray parts that help reliably transmit safe and reliable power with ampacities of 3000-6000 amps.



Indoor Grounding Solutions

nVent

nVent ERICO Indoor Grounding Solutions feature Grounding & Bonding Bars, Irreversible Crimp Connectors and Tools, and Mesh Bonding Network Connectors. Proper bonding creates an equipotential plane during faults. ERICO Ground Bar offers single-point bonding; connections are welded or lugged. PermaGround Compression Connectors ensure permanent, corrosion-free, high-conductivity copper grounding, suitable for direct burial. Mesh Bonding Network Connectors allow simple, economical field connections, with options for additional pigtails to link to building steel and equipment.



nVent CADDY Cable Management Solutions

nVent

nVent CADDY Cable Support and Pathway Solutions include the WBT Performance Cable Tray, Cat HP J-Hook System, Rod Lock Mounting, and Pyramid Support System. WBT trays provide 400% better cable support and suit high-performance needs. Cat HP J-Hooks offer flexible mounting options. Rod Lock Channel Nuts allow fast, universal attachment. Pyramid supports pipes, conduit, and trays, improving load capacity while reducing installation time compared to traditional support methods.



Electronic Cabinets + Ladder Rack

nVent

nVent offers server and networking cabinets designed for both aesthetics and functionality, ranging from basic models to high-frequency shielded, shock-protected designs. nVent Electronic Cabinet Solutions encompass Server Racks, Networking Racks, Cabling Racks, and Colocation Racks. The ProLine S1 Cabinets provide an economical, versatile solution for contractors, schools, and smaller networks, with various sizes, configurations, and accessories available to meet diverse installation needs for servers, switches, cables, and communications equipment.



nVent ERIFLEX Flexibar and FleXbus Flexible Connections

nVent



nVent ERIFLEX Flexibar is a flexible, low-voltage busbar solution from 27 mm² to 1200 mm² and 125 A to 2800 A. It bends easily for compact installations, with connections by punching, bolting, clamping, or welding—no lugs needed. The patented FleXbus System provides fast, customizable on-site connections for transformers, switchgears, and generators. Both systems feature advanced, flame-retardant, low-smoke, halogen-free insulation, enhancing safety and flexibility in modern electrical panel design.

Cable Management Solutions

Panduit



Streamline, secure, and support your network infrastructure with Panduit's comprehensive cable management solutions. Designed for scalability and reliability, our 4-Post Racks and PatchRunner® 2 Vertical Cable Managers simplify routing, improve airflow, and maintain bend radius integrity for optimal performance. Together, they deliver a flexible foundation for organized, efficient, and high-performance data centers.

Pathway Solutions

Panduit



Panduit's Wire Basket Overhead Cable Tray Routing System delivers robust cable management with superior strength-to-weight ratio and 20% lighter design than competitors. Featuring welded steel mesh construction with larger openings that reduce cutting by 50%, plus FiberRunner routing systems designed to segregate, route and protect fiber optic and high-performance copper cabling. Our pathway systems optimize reliability, space utilization, and scalability across enterprise and data center applications.

Fluke Versiv - DSX2-8000QOI DSX CableAnalyzer Series Copper Cable Certification tool

Fluke



The Fluke Versiv DSX CableAnalyzer Series accelerates copper cabling certification in data centers, supporting Cat 5e, 6, 6A, 8, and Class FA/I/II up to 40 GbE. Engineered for Level VI/2G accuracy, it eliminates setup errors, speeds troubleshooting, and produces clear reports for compliance and customer acceptance. Part of the Versiv family, it enables technicians of all skill levels to manage high-density, mixed-media environments—streamlining projects, reducing downtime, and ensuring fast, reliable network performance critical to modern data center operations.

Cable Reel

Legrand Pass & Seymour

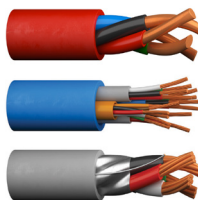
Legrand's Pass & Seymour Cable Reels provide a rugged, reliable solution for delivering safe, organized and accessible power in dynamic environments, from construction sites and data centers to industrial facilities and commercial buildings.



CAROL® Sound, Alarm & Security Cables

Prysmian

Rhino-Hide Single Pole Cam-Type Connectors supply temporary electrical power distribution for indoor and outdoor applications, including for the sports and entertainment industries, welding and construction sites, shipbuilding, mining operations, petrochemical and manufacturing plant turnarounds, and more.



CAROL® Diesel Locomotive Cable

Prysmian



Prysmian's CAROL® 2000V DLO is a flexible single-conductor portable power cable, perfectly crafted for the demands of data centers and telecommunications. Elevate your power solutions with this reliable and versatile cable, designed to meet the highest standards of performance and efficiency.

Medium Voltage Power Cables

Prysmian



Prysmian's medium-voltage (MV) cables play a crucial role in managing and distributing power and signals within data center infrastructure. Their diverse range of MV cables is designed to meet the demands of applications where quality and reliability are essential. With multiple insulation sheath options available, these cables can deliver up to 20 kV for power distribution both inside and around your facility.

Single Unit Distribution OFNR/OFNP

Superior Essex



Single-unit distribution optical fiber cables deliver superior performance with a RoHS-compliant, single-jacket design and fiber counts from 6 to 24. Engineered for versatility, these cables are compatible with standard (SC, ST, FC) and small-form-factor (LC) connectors. Dielectric aramid yarns ensure strength and flexibility, while a flame-resistant outer jacket offers protection. The 18-24 fiber designs include a reinforced central strength element for enhanced durability, making them ideal for demanding applications.

Multi-Unit Distribution OFNR/OFNP

Superior Essex



Engineered for unmatched performance, Premises Multi-unit Distribution Optical Fiber Cables feature 6 or 12-fiber subunits with fiber counts ranging from 18 to 144 in a RoHS-compliant design. With RWP single mode, TeraGain® multimode, and TeraFlex® laser-optimized fibers, these cables ensure versatility and efficiency. Dielectric aramid yarns enhance strength and flexibility, while a flame-resistant jacket and temperature-resistant central rod deliver durability.

WIRE AND CABLING

10 Gain® XP+ Category 6A Superior Essex



Delivers superior performance with its proprietary core wrap, ensuring unmatched alien crosstalk protection. Compact and efficient (0.25" CMP, 0.275" CMR), it enables higher cable densities and supports Power over Ethernet (PoE) applications requiring high current. Fully compliant with ANSI/TIA-568.2-D and UL 444 standards, this cable reliably supports data speeds up to 10 Gigabit Ethernet, offering robust solutions for today's most demanding connectivity needs.

COOLING & THERMAL MANAGEMENT

InRow Cooling

APC by Schneider Electric



The Uniflair InRow Cooling system from Schneider Electric directly targets IT heat loads, eliminating the guesswork of traditional cooling methods. Placing the unit in the rack row reduces air mixing and ensures a predictable cooling setup in data centers.

Elevate® Adjustable Containment Solution Chatsworth

The Elevate™ Adjustable Containment Solution offers a cutting-edge approach to improve data center efficiency through effective hot air management. The innovative system links two rows of cabinets creating an efficient closed hot air return system. A telescoping two-piece panel fits between the cabinet roof and the ceiling, eliminating the need for custom modifications on-site. Its ease of specification and enhanced serviceability promise enhanced efficiency and performance in network environments.



Containment and Conveyance Systems

Eaton Power Quality/Tripp Lite



Hot-aisle containment (HAC) systems, such as Eaton's structural steel independent containment system (ICS), integrate air isolation and temperature containment with cable conveyance. Floor-standing or ceiling-mounted HAC systems are quick to deploy and offer built-in future-proofing by enabling easier cabinet changes for future growth.

Fluke Ti401Pro - Thermal Imaging Infrared Camera: High resolution imaging for inspections

Fluke

The Fluke Ti401 Pro Thermal Camera helps data center teams detect heat issues before they cause downtime. Featuring patented IR-Fusion™ for combined infrared/visible diagnostics, 640×480 resolution, wide field of view, and measurements up to 650 °C, it excels at inspecting critical racks, PDUs, and cooling systems. Rugged, splash- and dust-resistant, and drop-tested to 2 meters, it pairs with Fluke Connect™ for rapid analysis and professional reporting.



Fluke ii915 - Acoustic Imager: Rapid, Precise Leak Detection for Data Centers

Fluke

The Fluke ii915 Acoustic Imager enables data center teams to quickly detect and locate leaks in compressed air, gas, and vacuum systems critical to cooling and facility operations. Using LeakQ™ and MecQ™ modes, it visualizes sound through SoundMap™ overlays on visual images for precise pinpointing—even in noisy environments. With exceptional sensitivity and high-frequency range, inspections can be performed during operation, helping prevent costly downtime, improve energy efficiency, and maintain the reliability of mission-critical infrastructure.



nVent Rear Door Heat Exchangers (RDHx)

nVent

nVent addresses the surge in data processing demand driven by AI-enhanced applications. Its RDHx units deliver highly resilient, energy-efficient operations, featuring hot-swappable, tool-less replacement of fans and power supply units. RDHx Pro supports up to 78 kW high-density racks, ideal for next-generation data centers seeking improved space utilization, sustainability, and reliability. These solutions help meet evolving needs for higher performance, greater energy efficiency, and robust protection for critical IT infrastructure.



Vertiv™ SmartRow™ 2 with Fire Suppression

Vertiv



The SmartRow™ is a complete Edge data center pre-Engineered by Vertiv for lightning-fast deployment. Each system includes rack enclosures, in-row cooling with complete containment, UPS battery backup, power distribution, and cable management. Rather than waiting months to design and deploy a new Edge Data Center solution or retrofit an existing space, a SmartRow is designed to be room neutral and can be installed in less than 5 days. Power and Cooling redundancy (2N) options available.

Ty-Rap® Cable Ties

ABB

Innovative design and engineered materials make Ty-Rap® cable ties the ideal fastening solution where performance is crucial. ABB's extensive range of Ty-Rap® cable ties simplifies the tasks of fastening, bundling, clamping, and managing wires for professionals in industrial applications, construction, communications, utilities, and OEM sectors. Ty-Rap cable ties deliver exceptional performance in demanding environments, offering resistance to extreme temperatures, flames, continuous sunlight, UV radiation, aggressive chemicals, and heavy tensile strength requirements.



Superstrut®

ABB

ABB's Superstrut® is an innovative metal framing system utilized in homes and buildings globally. It provides structural support for data and electrical wiring, plumbing, lighting, and essential equipment. Designed for versatility, Superstrut simplifies installation across various applications, from ceilings and walls to harnesses and trapeze structures, ultimately saving time and labor. The system features multiple channels, configurations, depths, fittings, and finishes, including GoldGalv® and SilverGalv®.



Color-Keyed Compression Lugs

ABB

Color Keyed® is a system solution designed to meet stringent UL & IEC Class A testing requirements. Our lugs are made of 99.9% pure, oxygen-free copper. The Color-Keyed® color-coded crimping system assures the right die is used with the right lug resulting in an accurate, reliable crimp. Color-Keyed® dies are designed to produce a circumferential, hex- or diamond-shaped compression rather than a simple indent resulting in assured high conductivity, exceeding IEC 61238-1 and UL standards.



Burndy Compression Lugs

BURNDY

These lugs provide a reliable, secure connection, ensuring optimal electrical conductivity and mechanical strength. Ideal for high-stress environments, our compression lugs are crafted to withstand thermal expansion and vibration without compromising integrity. Available in a variety of sizes and configurations, they cater to a broad range of installation needs, making them a versatile choice for professionals seeking dependable solutions in electrical connectivity.



Screwless Locking Plugs & Connectors using EdgeConnect™ Technology

Hubbell Wiring Device-Kellems



Experience the industry's fastest termination devices with the Twist-Lock® Edge series, powered by Hubbell's cutting-edge spring termination technology. Durable steel springs maintain consistent pressure on wires, ensuring reliable connections in the toughest environments. Choose from a wide range of receptacles, plugs, connectors, and flanged inlets, all tailored to meet the needs of OEMs, electricians, and contractors. Maximize installation efficiency with the Twist-Lock® Edge series.

Pin and Sleeve Devices

Hubbell Wiring Device-Kellems

Made from durable materials and available in various configurations, these IEC electrical connectors ensure easy installation and safe operations with robust safety features, catering to diverse power needs and promoting efficiency in demanding environments.



Pin & Sleeve

Legrand Pass & Seymour

Designed to withstand harsh conditions, including moisture, dust and extreme temperatures, these devices provide secure, watertight connections for data centers and commercial facilities, minimizing risks and maximizing efficiency.



GFCIs

Legrand Pass & Seymour

Exceeding UL requirements, Legrand's GFCIs self test every three seconds -- instead of the industry standard three hours -- providing a level of reliable electrical protection that's unprecedented. The devices are also designed with a tinner profile to make room for wires in the wall box. That means they're not only safer, but easier to install.



Pin & Sleeve, Disconnect Solutions

Leviton

The LEV Series includes a full offering of IEC 60309-1 and 60309-2 pin & sleeve devices including plugs, connectors, receptacles, inlets, backboxes and mechanical interlocks designed to simplify installation, endure the harshest environments and improve safety and productivity. Devices with Inform technology provide smarter electrical connections by integrating with Industrial Internet of Things (IIoT) technology to support predictive maintenance schemes.



Single Pole Cam-Type Devices

Leviton

Rhino-Hide Single Pole Cam-Type Connectors supply temporary electrical power distribution for indoor and outdoor applications, including for the sports and entertainment industries, welding and construction sites, shipbuilding, mining operations, petrochemical and manufacturing plant turnarounds, and more.



Wire Mesh Safety Grips

Leviton

Wire Management Solutions for Pulling, Connecting and Supporting. Designed to distribute stress over a large area so they can securely hold, pull or support the wire, rope, tubing or fiber optic cable to which they are applied.



HEAVYCON and Whip Assemblies

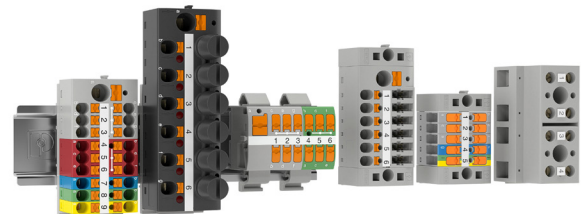
Phoenix Contact

HEAVYCON heavy-duty connectors ensure space-saving, high-performance power transmission compared to conventional CEE plug-in devices. They also feature quick and error-free startup. With the reduced power dissipation and lower heat generation, they enable enormous energy savings. Whip assemblies provide power from the PDU to the Server Racks using standard 5 or 7 pin HEAVYCON connectors on each end. These IP65 rated cables are meant to be pluggable, rugged and reliable for critical power applications.

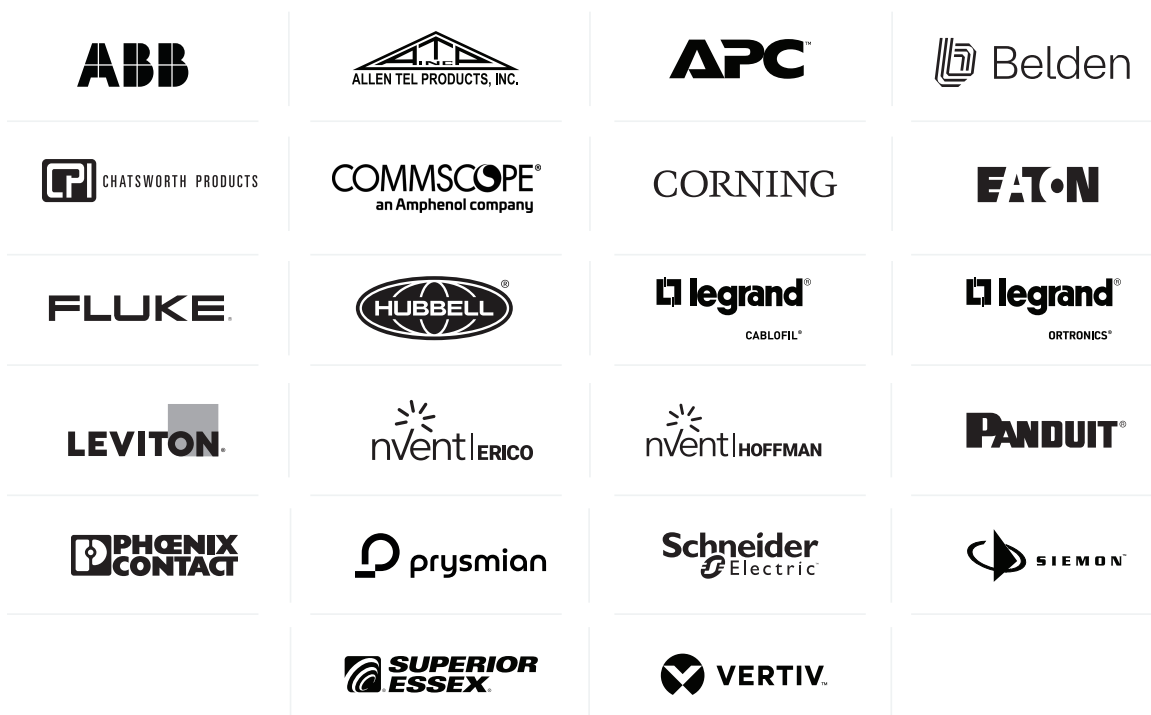


PTFIX Distribution Blocks

Phoenix Contact



The PTFIX-function distribution blocks enable the easy integration of function elements such as disconnect elements, fuses, or components. The blocks have integrated bridging and are available with seven terminal points and a nominal cross-section of 2.5 mm².



Graybar, a Fortune 500 corporation and one of the largest employee-owned companies in North America, is a leader in the distribution of high quality electrical, communications and networking products, and specializes in related supply chain management and logistics services.

Graybar has the power and stability of a big company and the integrity and drive of an employee-owned business. Graybar is certified against the latest ISO 9000 standard.

Discover how Graybar can work to your advantage.

1-800-GRAYBAR | GRAYBAR.COM

