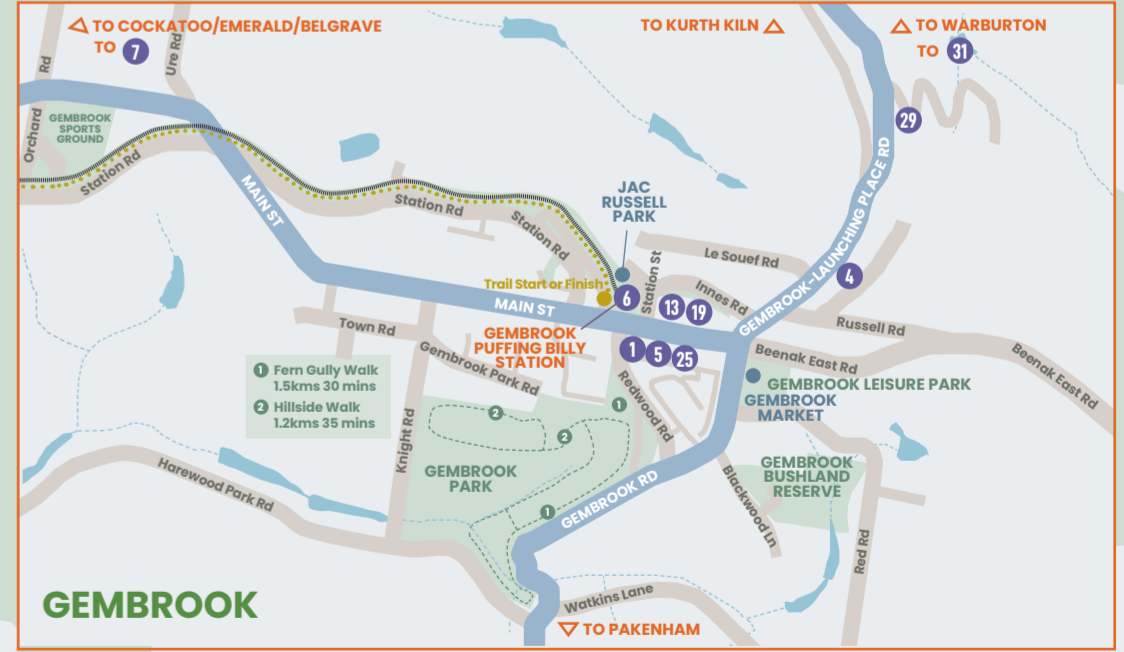
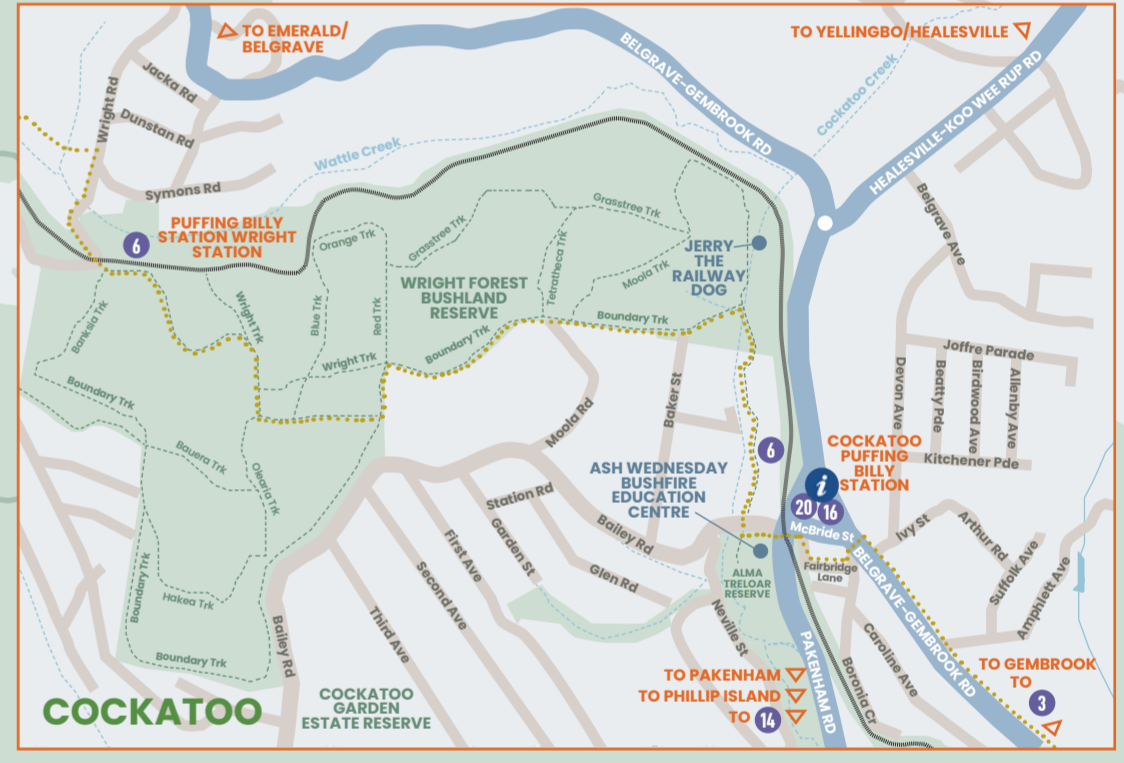
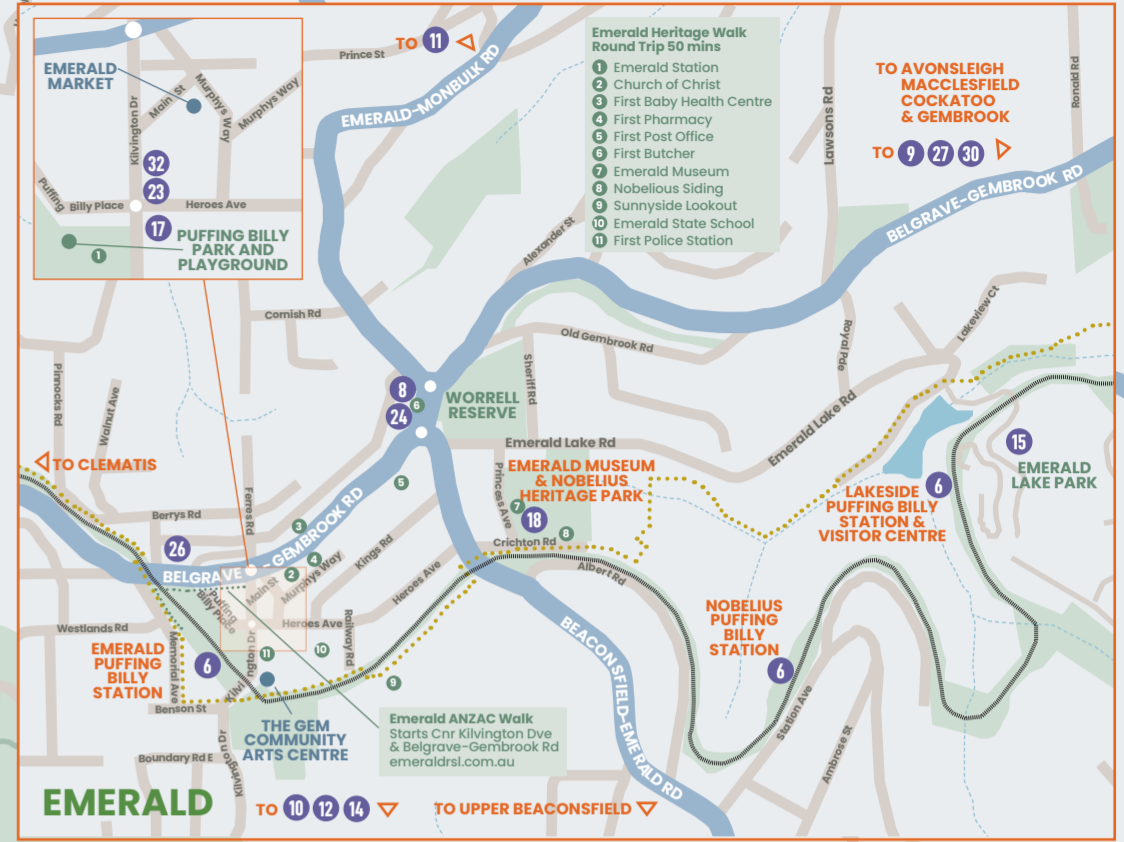
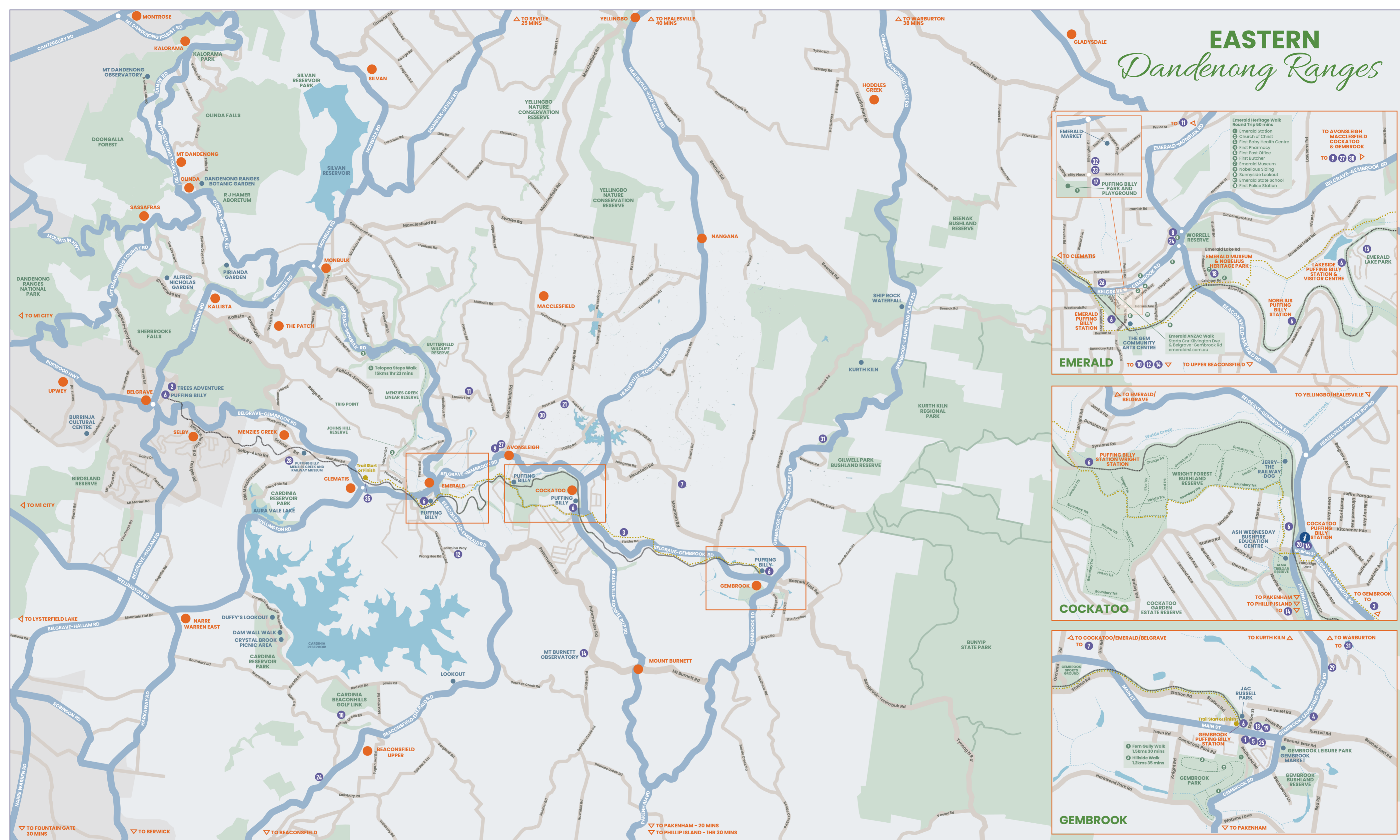


EASTERN Dandenong Ranges



Eastern Dandenong Ranges Trail
Find more at www.easterndandenongranges.com.au

- CLEMATIS TO EMERALD (3KM)**
1. Clematis – Paradise Hotel to Belgrave-Gembrook Road, Emerald.
2. Memorial Ave to Benson St. 3. Benson to Kilvington Dve & cross over.
EMERALD TO EMERALD LAKE (3KM)
4. Follow signage through Pepl's Land and cross at Beaconsfield-Emerald Road. 5. Follow trail past the Emerald Museum and the Nobelius Packing Shed through to Emerald Lake Park Wombat Corner intersection.
EMERALD LAKE TO COCKATOO (5KM)
6. From Wombat Corner, pass beside the gate onto the trail and continue to Wright Road. 7. Cross Wright Road and follow the trail to the right until the railway is crossed again, at Wright Station. 8. Go through the gates to the left and follow the management road, Wright Track, into the Wright Forest. 9. Stay on Wright Track until a gate – turn left onto Boundary Track before the gate and follow it, and pass another couple of gates until you reach Baker Street. 10. Turn left at Baker Street, down another steep incline to cross the bridge over Cockatoo Creek. 11. Continue on the trail to Cockatoo, arriving at the Ash Wednesday Bushfire Centre in Bailey Rd. 12. Continue on the trail along Bailey Road, across Healesville-Koo Wee Rup Road and the railway to enter Cockatoo.
COCKATOO TO GEMBROOK (6KM)
13. The trail continues along Fairbridge Lane, to join Belgrave-Gembrook Road. 14. The trail passes through Cockatoo beside Belgrave-Gembrook Road, and into Old Gembrook Road. 15. Continue along the trail to Fielder and keep following the signage all the way to Gembrook.

Dandenong Ranges Markets
Find more at www.easterndandenongranges.com.au

- BELGRAVE BIG DREAMS MARKET**
St Thomas Moore Primary School, Reynolds Lane, Belgrave
2nd Sunday of the month, 9am – 3pm
COCKATOO COUNTRY MARKET
77 Pakenham Rd, Cockatoo
1st Saturday of the month, 8:30am – 1:30pm
EMERALD MARKET
Cnr Kilvington Dve & Belgrave-Gembrook Rd, Emerald
3rd Sunday of the month, 8:30am – 2pm
LOST WOODS MARKET
Puffing Billy Park, Emerald
2nd Saturday of the month, 9am – 2pm
GEMBROOK MARKET
Gembrook Community Centre, 4 Gembrook Rd, Gembrook
4th Sunday of the month, 9am – 3pm
KALLISTA COMMUNITY MARKET
Village Green, 2 Church St, Kallista
1st Saturday of the month, 9am – 1pm
MONBULK PRODUCE MARKET
73 Main Rd, Monbulk
2nd Saturday of the month, 9am – 2pm
PLEASE NOTE: Some markets can be weather dependent so please check for any cancellations or date changes. Some markets also offer Twilight markets instead of day markets during Daylight Savings.

Village Facilities & Services
Find more at www.easterndandenongranges.com.au

- ATM'S**
Emerald Comm Bank
Emerald & District Bendigo Bank
Gembrook IGA
PETROL
Shell Emerald
Auto Plus More Emerald
Metroplus Gembrook
PHARMACY
Emerald Village Pharmacy
Emerald Wellness Pharmacy
Cockatoo Pharmacy
SUPERMARKETS
Emerald IGA
Emerald Woolworths
Cockatoo IGA
Gembrook IGA
Monbulk Aldi
POST OFFICE
Emerald
Cockatoo
Gembrook
MEDICAL
Emerald Medical
Mandala Medical
Cockatoo Medical
VETS
Emerald Vets
Avonsleigh Vets
Cockatoo Creek Vets
Gembrook Vets
POLICE STATION
Emerald
Eastern Dandenong Ranges Business & Tourism acknowledge the Wurundjeri as the traditional custodians of the land and value the significance of the Wurundjeri people's history as essential to the unique character of our area. We pay our respects to ancestors and Elders, past and present and the spiritual relationship – both historical and living – between the land and its first peoples.





Eastern Dandenong Ranges
Visitor Information & Touring Map

Visitor Information Centre
7-17 McBride Street, Cockatoo
03 5944 3536



Melbourne to the Eastern Dandenong Ranges

☺ Via Eastern Freeway M3 (toll) 1hr, 5mins, 63kms
Take the M3 and exit at Burwood Highway (26). Continue on Burwood Highway to Belgrave. Take Belgrave-Gembrook Road to Emerald, Cockatoo, Gembrook and surrounding townships.

☺ Via Monash Freeway M1 (toll) Approx 1hr, 53kms
Take the M1 and exit at Ferntree Gully Rd (22). Turn right onto Burwood Hwy and continue to Belgrave. Take Belgrave-Gembrook Road to Emerald, Cockatoo, Gembrook and surrounding townships.

OR Take the M1 and exit at Wellington Road (18).
Take Wellington Road to the end and turn right onto Belgrave-Gembrook Rd to go to Emerald, Cockatoo, Gembrook and surrounding townships or left to go to Belgrave.

☺ Travelling around the Eastern Dandenong Ranges
Belgrave to Emerald 10kms, 12mins
Belgrave to Cockatoo 17kms, 20mins
Belgrave to Gembrook 23kms, 25mins
Emerald to Upper Beaconsfield, 14kms, 14mins
Emerald to Olinda, 15kms, 18mins
Emerald to Monbulk, 10kms, 13mins

☺ Travelling from the Eastern Dandenong Ranges
Emerald to Mt Dandenong Lookout 20kms, 27mins
Emerald to Warburton, 40kms, 40mins
Belgrave to Healesville/Yarra Valley, 35kms, 35mins
Emerald to Pakenham, 20kms, 21mins
Emerald to Dumbuya World, 35kms, 35mins
Emerald to Phillip Island, 105kms, 1hr, 30mins

Eastern Dandenong Ranges
Visitor Information and Touring Map
Edition 2, 2026.
Produced by Eastern Dandenong Ranges Business & Tourism.
Cover photo: Emerald Lake Park, courtesy of Tracy Dastler.



18 EMERALD MUSEUM
Open Wed 10am-3pm
Sun 12pm to 3pm 5968 2152
5 Crichton Rd, Emerald

3 FIELDERBERRY FARM
U-Pick Berry Farm
Raspberries, Blueberries, Blackberries, homemade ice-creams & waffles.
11 Fielder Rd, Cockatoo
0409 846 419
Follow our Facebook for season opening

30 AVONSLIEGH BERRIES
U-Pick Farm Gate offering Blueberries, Raspberries, Sour cherries, Pure honey
Season opens Mid-December
Open 9am to 6pm
Contact 0413 957 075
26 Avon Road, Avonsleigh

7 BURNARLOOK
Picturesque U-pick Hazelnut Grove & Llama Experience
Visit us by appointment during picking season, from late February to April. Group bookings for our fun, friendly and relaxing Llama experiences are available year-round.
0400 578 306

10 BEACONHILLS GOLF CLUB
27 holes, set in a picturesque bushland location. Known for its rolling hills, iconic lakes and famed kangaroo population, Beaconhills presents an enjoyable challenge to all levels of golfers.
85-87 Stoney Creek Rd, Beaconsfield Upper 5945 9210

1 THE MOTORIST DISTILLERY
THREE SPUDS VODKA
A smooth clean spirit distilled on-site from Gembrook potatoes, joined by a rotating tap list of regional spirits, wines & craft beers. Enjoy vintage logging relics & farming history amongst rust kissed relics from a bygone era.
77 Main Street, Gembrook 0405 156 857

14 MT BURNETT OBSERVATORY
Public nights at The Observatory
An intro to astronomy for anyone who would like to see a working observatory and enjoy a tour of the telescopes and viewing of the universe observed, weather permitting.
420 Paternoster Rd, Mount Burnett
Bookings required

Attractions & Experiences
Find more at www.easterndandenongranges.com.au

6 PUFFING BILLY
OVER, UNDER, UNCOVER, DISCOVER.
PUFFING BILLY RAILWAY
Step into a timeless world of wonder with Australia's favourite steam train, Puffing Billy, located in the heart of the Dandenong Ranges and only one-hour east of Melbourne.
P: 03 9757 0700 E: info@puffingbilly.org.au
BOOK ONLINE AT PUFFINGBILLYRAILWAY.ORG.AU

2 TREES ADVENTURE
15% OFF
USE CODE EDR15
Book now
Visit our website for more info. *Offer ends 30 November 2027

4 GEMBROOK MANOR HIGH TEA
GEMBROOK MANOR HIGH TEA
Private Dining Experience - Birthdays, Bridal & Baby Showers
0422 205 568

16 GRIFF'S PLACE
Arcade Escape Rooms Minigolf
Vintage Apple Computer Museum
56-60 McBride Street, Cockatoo
www.griffs.place 03 4210 0101

21 RAY BESSERDIN PAPER SCULPTURE
Australia's World Acclaimed Paper Sculpture Artist.
Ray Besserdin
Paper Sculpture Artist
Studio visits welcome by appointment via Website Contact Form: www.papersculptureartist.com

11 EMERSLEIGH ESTATE
Emersleigh Estate
Boutique winery located in Emerald, producing Sparkling, Pinot Noir, Chardonnay & Shiraz wines.
Cellar Door - Open Saturday & Sundays
71 Stewart Rd, Emerald 0417 663 207

15 ART IN THE PARK
Art in the Park
Exhibition and Artist Gift Shop
Located in Emerald Lake Park
An amazing array of artworks and gifts for sale including an activity space for the kids to get creative.
Open 10am to 3pm daily
Emerald Lake Road, Emerald

FOR MORE THINGS TO EXPLORE IN THE DANDENONG RANGES VISIT OUR INFORMATION CENTRE IN COCKATOO



9 BAM BAM ITALIAN
Indoor/outdoor Takeaway
Children's playground
Dog friendly
Group bookings
Kids parties
445 Belgrave-Gembrook Rd, Avonleigh 5968 4717

8 THE GENERAL FOOD STORE
WHOLESALE SEASONAL VICTORIAN MENU
WEEKDAYS 7.30AM-3PM, WEEKENDS 8AM-3PM
377 Belgrave-Gembrook Rd, Emerald • 03 5968 3580
See menu and order online thegeneralfoodstore.com.au

35 PARADISE VALLEY HOTEL
Modern bistro, excellent outdoor spaces and light filled public bar with TAB facility and bottleshop.
View Puffing Billy go by at Clematis Station
Friday night music & raffles
Regular, corporate & private events
249 Belgrave-Gembrook Rd, Clematis 5968 4037

17 THE LAUGHING FOX CAFE
All Day menu
Wide range of ice-creams
Fresh homemade scones
Large groups service
13 Kilvington Drive, Emerald 0493 675 559
Opposite Puffing Billy Park

13 STATION HOUSE PIZZERIA
Italian Cuisine featuring handmade pizza focusing on local and seasonal produce.
Indoor & Outdoor Dining
Next to Puffing Billy Station & Jac Russell Park
66 Main St, Gembrook 5968 1315

20 CHIEFTAINS SMOKEHOUSE
Artisan Smokehouse & Butcher
Discover our award winning smallgoods and butchery and experience flavours that you won't forget!
One-item lunch that changes every-day
Quality free range meat
Platters, grazing boxes & catering
30 McBride St, Cockatoo 5905 2969

19 CAFE BEANS N SPICE
Authentic Indian flavours, delicious spices and a warm, welcoming atmosphere.
Dine-in & Takeaway
68 Main Street, Gembrook 5968 6348

Restaurants & Cafés
Find more at www.easterndandenongranges.com.au

5 THE INDEPENDENT
OPEN FRIDAY-SUNDAY, 12PM-LATE
WWW.THEINDEPENDENTGEMBROOK.COM.AU

24 GENERAL STORE
Two great stops in Emerald & Upper Beaconsfield
Over the Road - Emerald Breakfast • Brunch • Lunch • Licensed Café & Restaurant
Upper Beaconsfield General Store Café • Takeaway • Bakery
Supplying Locals & Passers-by continuously since 1885
www.generalroad.com.au
Great coffee, local flavours & friendly faces

25 GEMBROOK BAKERY
Family owned bakery in the beautiful surrounds of Gembrook.
Bread
Pies
Sweet Treats
Fresh Sandwiches
Open 7 days
Shop 2, 83 Main St, Gembrook 5968 1144

Village Shops
Find more at www.easterndandenongranges.com.au

23 GRACE AND LOUIE
grace and louie BOOKSELLERS
DISCOVER THE DANDENONG RANGES FAVOURITE BOOK SHOP
FICTION & NON-FICTION
ADULTS & CHILDREN
COFFEE TABLE BOOKS
GIFTS & CARDS
Shop 8, 5-7 Kilvington Drive, Emerald, 3782 OPEN 7 DAYS

32 TINKAR'S CORNER
All sorts of gifts - for all sorts!
Ladies, Mens, Kids, Children, Babies, Homewares, Jewellery & More
Open 7 days
Shop 7, 5-7 Kilvington Drive, Emerald, 0448 763 606

27 AVONSLIEGH GENERAL STORE
LIQUOR. GROCERY. DELI. COFFEE. TAKEAWAY. GIFTS. OPEN 365 DAYS
445 BELGRAVE-GEMBROOK RD, AVONSLIEGH 5968 4500

SCAN THE QR CODE AND EXPLORE OUR INTERACTIVE MAP OF THE EASTERN DANDENONG RANGES



Accommodation
Find more at www.easterndandenongranges.com.au

28 CLOUD VIEW GARDEN
Tranquil - Stunning Views - Cloud Retreat - Garden Retreat
Inhouse Dining - Picnic Experiences - Micro Weddings & Elopements
32 Selby-Aura Rd, Menzies Creek 0418 373 717

4 GEMBROOK MANOR
Escape to a luxury retreat of elegance and charm
Perched above Gembrook's rolling hills, Gembrook Manor offers private luxury accommodation with a grand bedroom, indulgent bathroom, and serene balcony views - just an hour from Melbourne.
0422 205 568 bookings@gembrookmanor.com.au

31 GILWELL PARK
Gilwell Park Adventure Centre
Authentic, immersive stays in nature with bushland camping, glamping tents, lodges and flexible group accommodation for memorable shared experiences surrounded by tranquility and adventure.
2555 Gembrook-Launching Place Rd, Gembrook 5967 8888

12 EMERALD RIDGE B&B
Luxury farm stay with a two bedroom cottage sleeping four and a private guest suite for two.
4 Jarmina Way, Emerald 0438 688 114

29 BRILYNBROOK B&B
Park-like Farmstay situated on 50acres in Gembrook. Comprises two units (each sleeps four) built above the pony stables.
3065 Gembrook-Launching Place Rd, Gembrook 0456 681 087

Local Businesses
Find more at www.easterndandenongranges.com.au

26 EMERALD AUTOMOTIVE
EMERALD AUTOMOTIVE REPAIRS
P: 03 5968 2922
Log Book Servicing, Brakes, Suspension, Batteries Sold & Fitted, Cars & 4x4's.
emeraldautomotiverepairs@gmail.com
273 Belgrave-Gembrook Rd, Emerald 5968 2922