



M Series

maharam





Meld

maharam



Messenger

maharam



Metaphor

maharam



001 Inspire



016 Allude



021 Shortcake



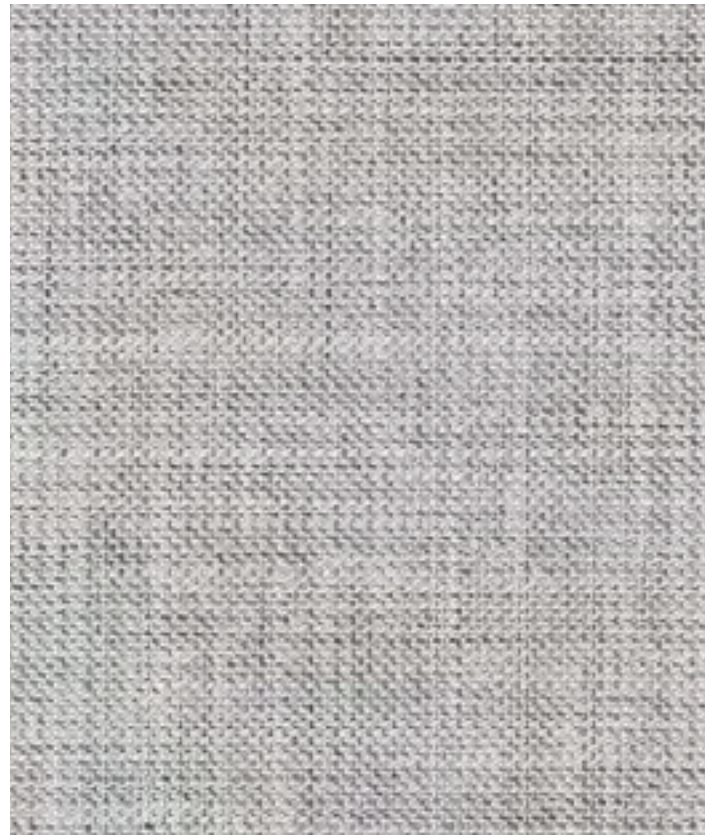
002 Rhea



010 Relax



012 Parrotlet



003 Noise



017 Tweed



019 Fossilize



018 Korma



014 Bosky



004 Speedway



025 Sparrow



022 Racecar



020 Cattail



015 Acreage



011 Delightful



007 Destiny



006 Maestro



005 Villanelle



023 Courtship



024 Jam



013 Verdurous

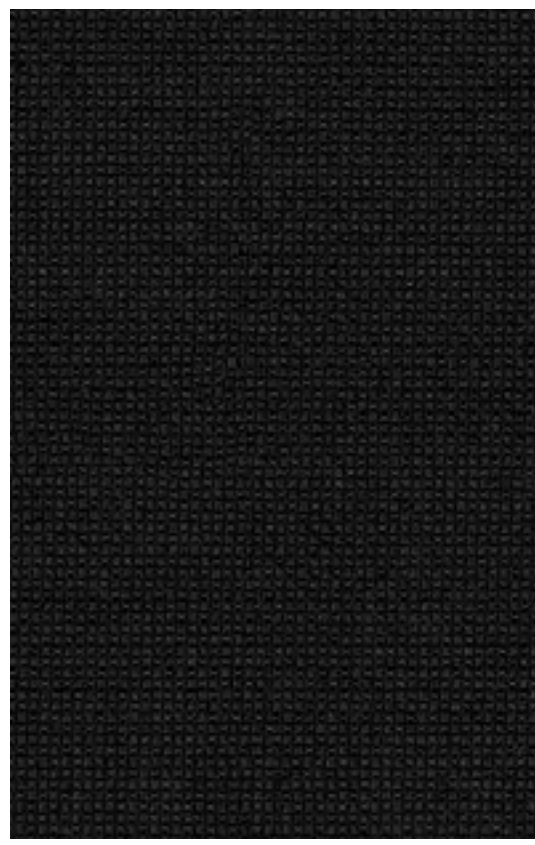


008 Possess



009 Waterside





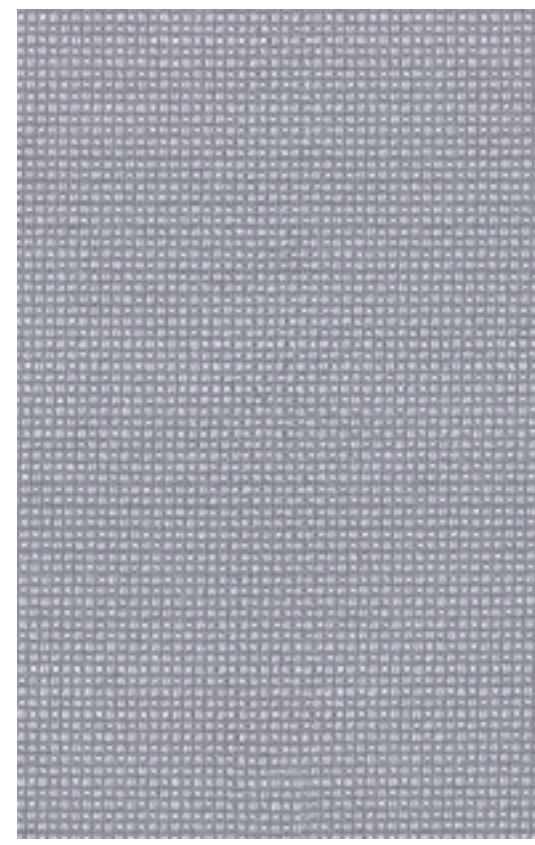
001 Crescendo



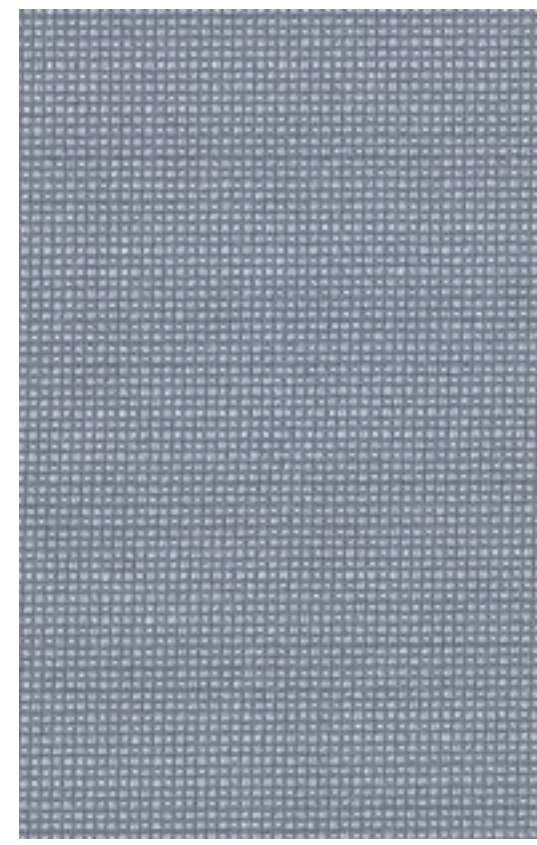
002 Resonate



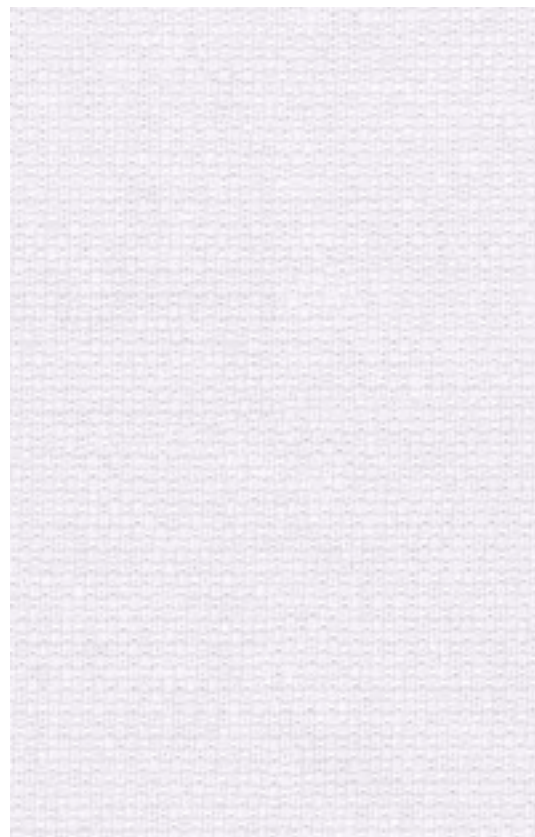
003 Runway



023 Vase



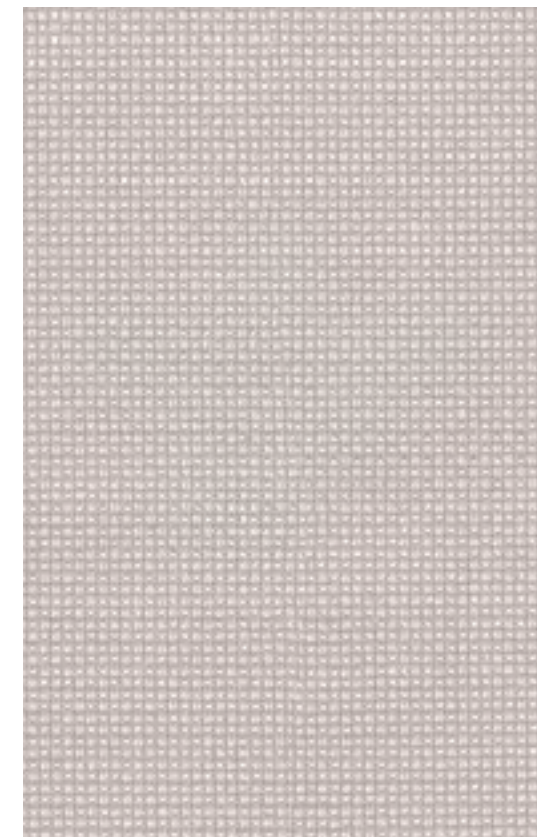
004 Ascend



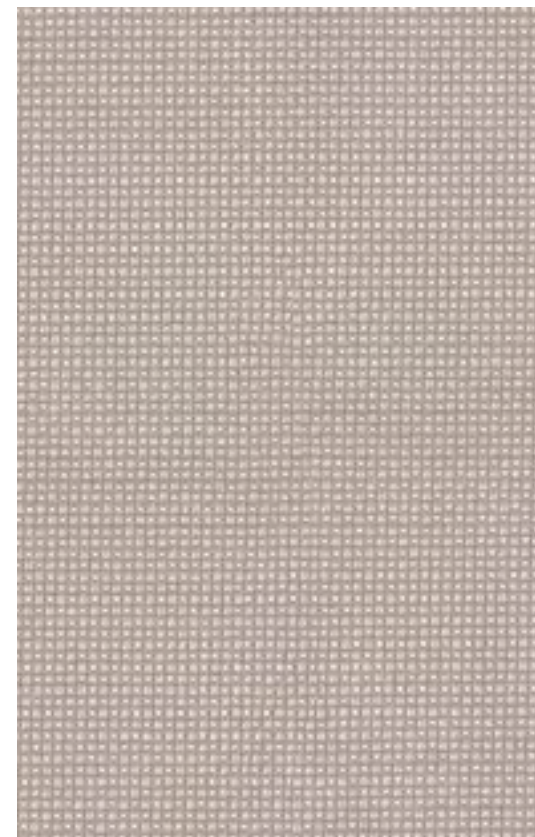
005 Veil



007 Clear



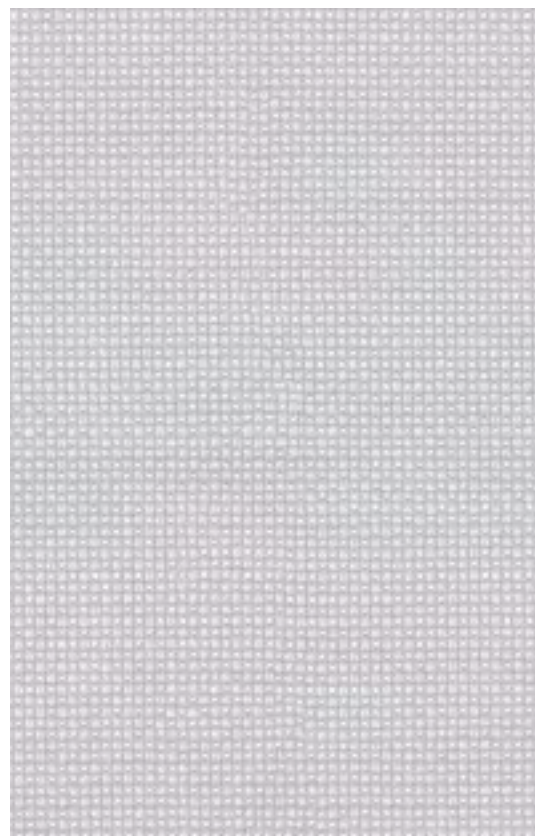
008 Fantasy



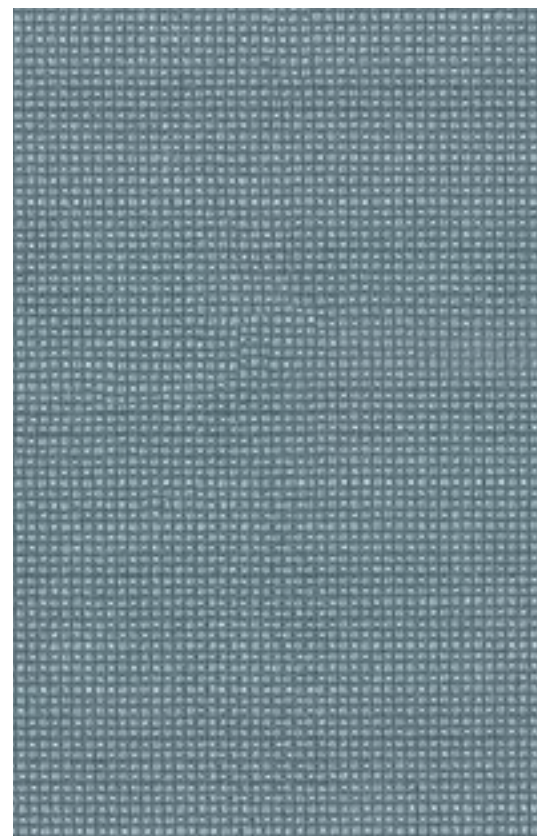
009 Miso



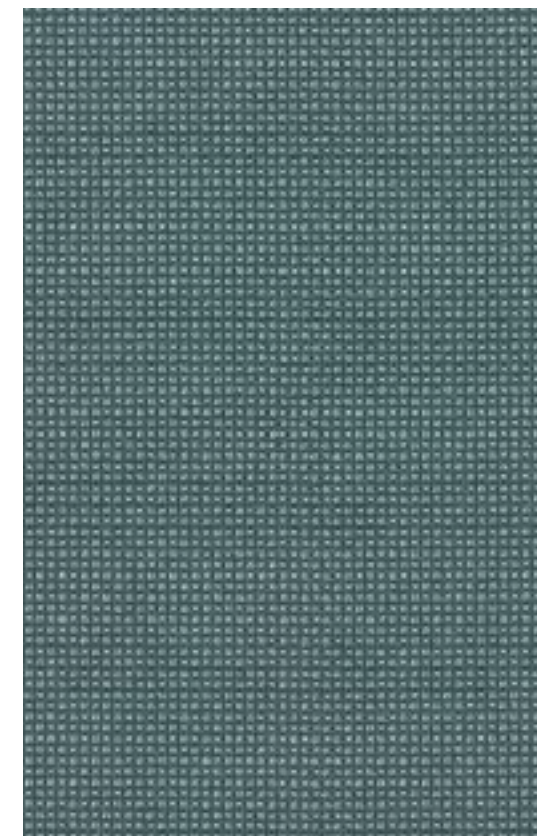
010 Compass



006 Refresh



016 Frigid



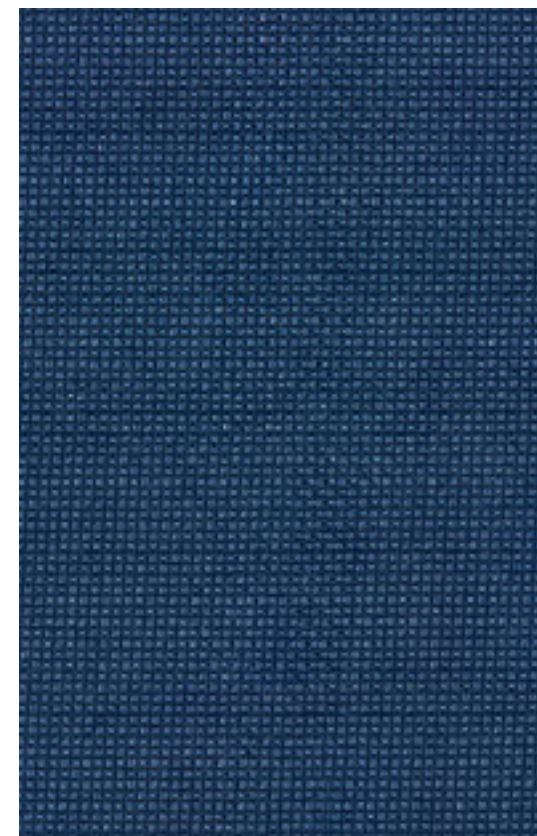
014 Mistletoe



013 Gool



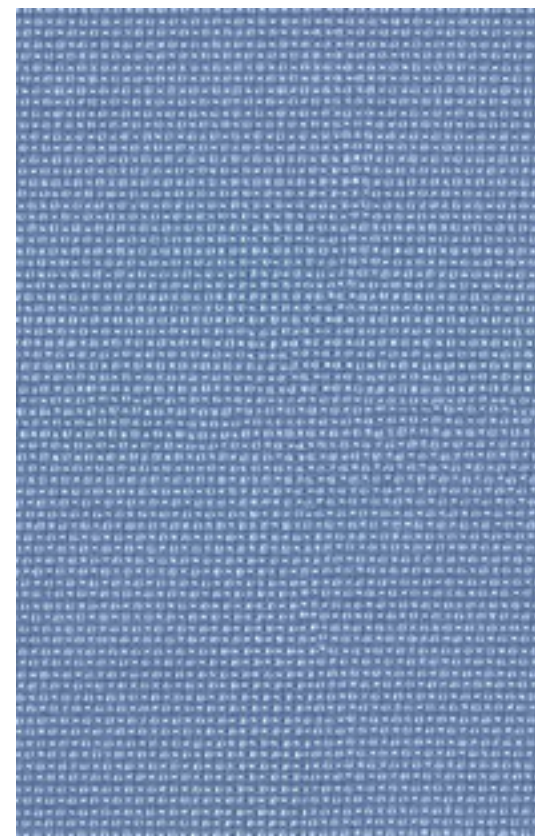
017 Riverbend



018 Noble



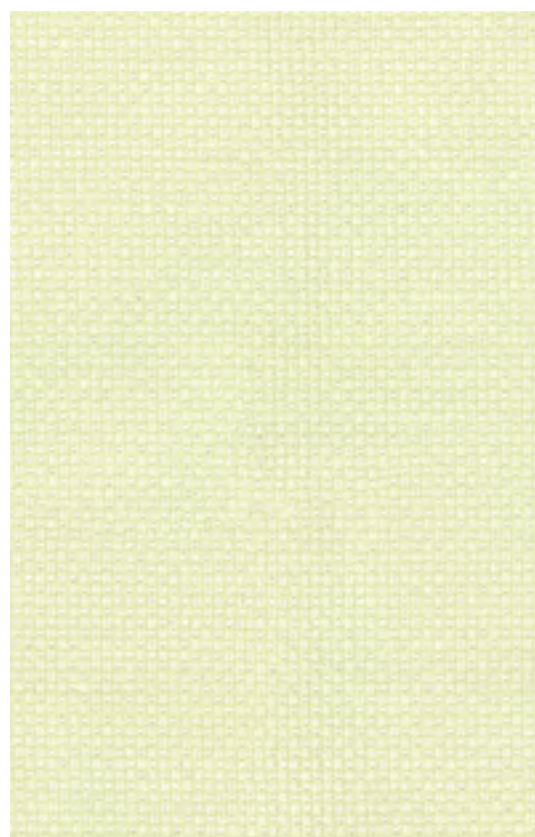
019 Pulsar



020 Vellella



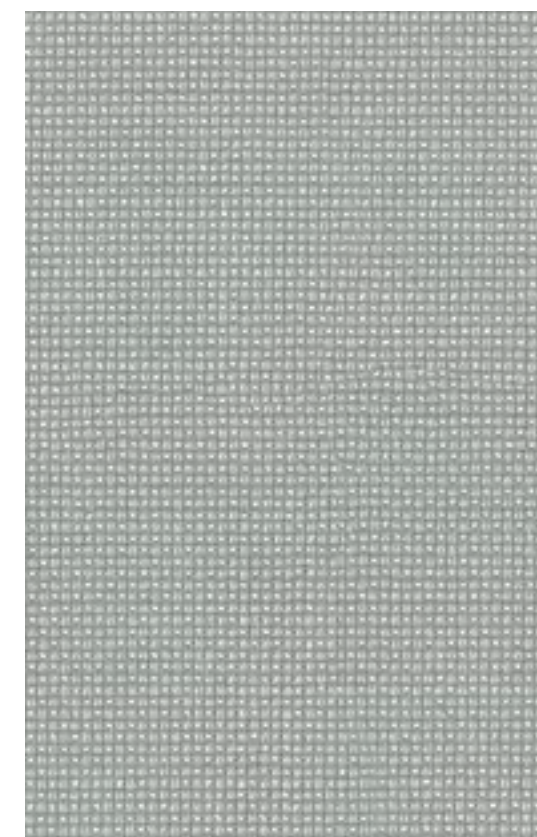
022 Sparse



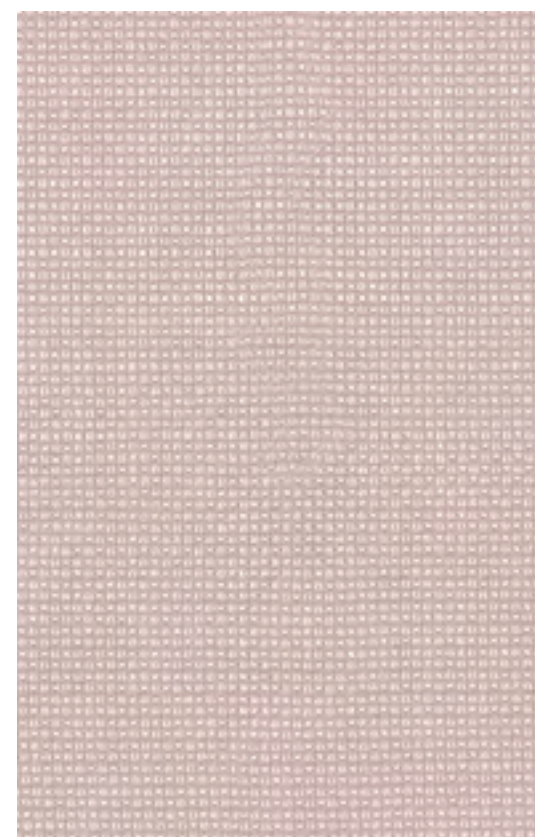
011 Bergamot



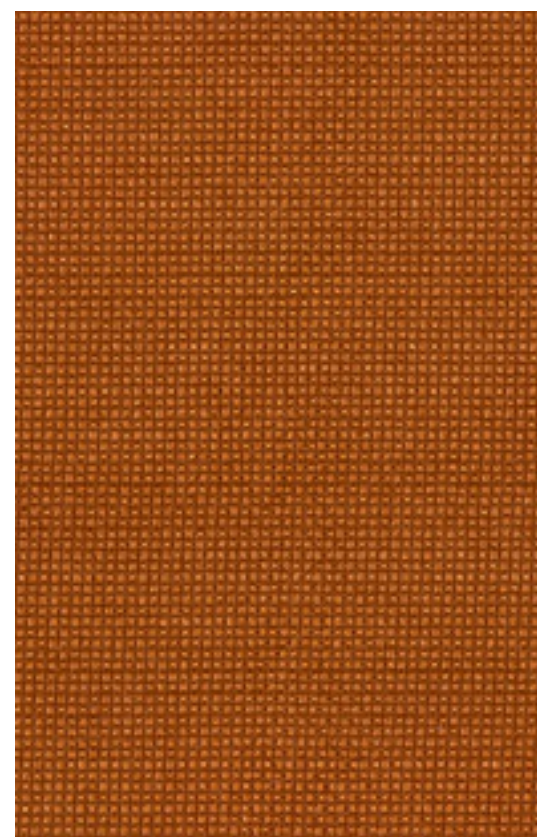
015 Seaglass



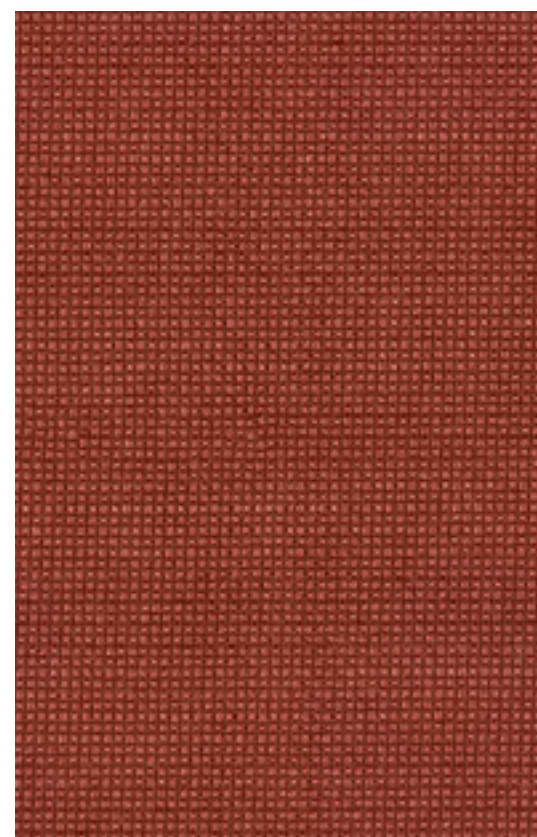
012 Grasshopper



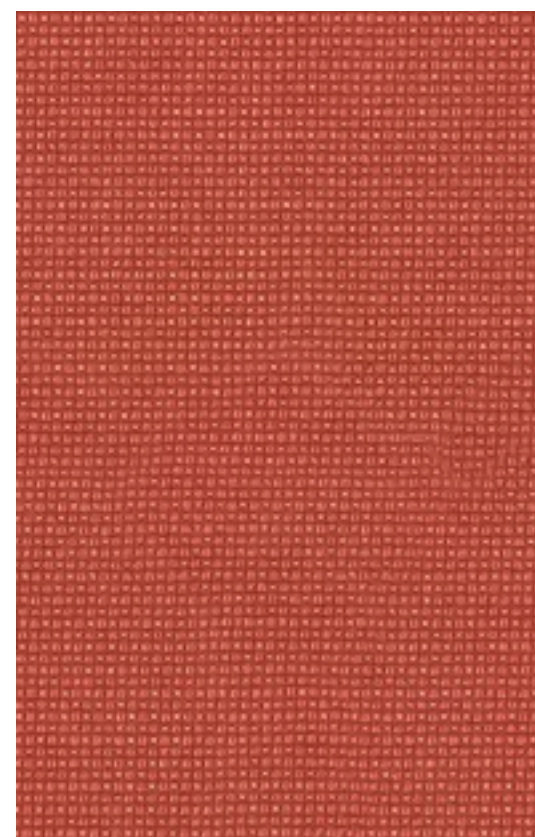
024 Haven



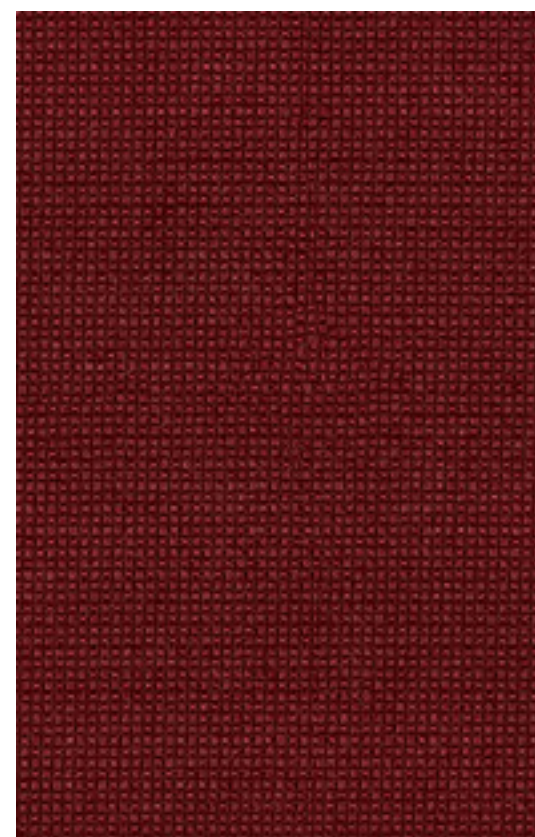
025 Mead



026 Neat



028 Theater



029 Poinsettia



030 Celebrate

**Manner**  
**Meld**  
**Messenger**  
**Metaphor**  
**Method**  
**Mode**  
**Muse**

Combining elevated aesthetics and performance, Maharam's M Series comprises richly colored woven textiles designed for universal appeal. Enlisting the design studio's material expertise and interest in technical innovation, textiles in the accessibly priced M Series offer recycled content and short lead times as well as abrasion resistance.

- 7 styles
- 285 colors
- Meets all flammability requirements for contract use
- Meets ACT performance guidelines for heavy-duty upholstery, systems, and upholstered walls

Manner  
466177  
Content: 65% Post-Industrial Recycled Polyester, 35% Post-Consumer Recycled Polyester  
Finish, Backing: Stain Repellent, None  
Width: 54" (137cm)

Meld  
466387  
Content: 68% Post-Consumer Recycled Polyester, 32% Polyester  
Finish, Backing: PFAS-Free Water Repellent, None  
Width: 54" (137cm)

Messenger  
458640  
Content: 78% Post-Consumer Recycled Polyester, 15% Polyester, 7% Nylon  
Finish, Backing: PFAS-Free Water Repellent, None  
Width: 54" (137cm)

Metaphor  
466553  
Content: 100% Polyester  
Finish, Backing: None, Acrylic  
Width: 54" (137cm)

Method  
466579  
Content: 88% Seaqual (79% Post-Consumer Recycled Polyester, 9% Upcycled Marine Plastic), 12% Post-Consumer Recycled Polyester  
Finish, Backing: None, None  
Width: 54" (137cm)

Mode  
466337  
Content: 80% Post-Consumer Recycled Polyester, 20% Polyester  
Finish, Backing: PFAS-Free Water Repellent, None  
Width: 54" (137cm)

Muse  
466487  
Content: 100% Post-Consumer Recycled Polyester  
Finish, Backing: None, None  
Width: 54" (137cm)

TYPICAL FOR ALL  
Abrasion: ASTM D4157, 100,000 double rubs Wyzenbeek  
Note: Abrasion test results exceeding ACT Performance Guidelines are not an indicator of product lifespan. Multiple factors affect fabric durability and appearance retention.  
Flammability: This textile meets all appropriate flammability requirements for contract use.  
Reduced environmental impact: These textiles offer reduced environmental impact.

Find complete product information at [maharam.com](https://maharam.com).

Samples: Call 800.645.3943 or visit [maharam.com](https://maharam.com)

© 2026 Maharam

Offer current as of April 2026

Complete specifications at [maharam.com](https://maharam.com)

Kimball International  
1600 Royal Street  
Jasper, IN 47546  
800.482.1717  
[kimballinternational.com/home](https://kimballinternational.com/home)

 **Kimball** International