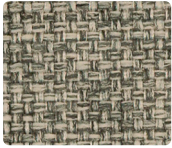


 **MAYER**FABRICS

Zip

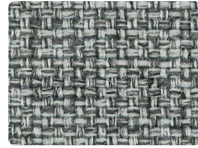
Alliance Seating Upholstery Collection



LEGACY
471-007 Gravel



SCOUT
470-007 Flax



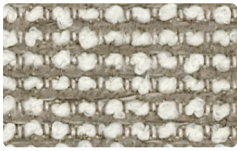
LEGACY
471-046 Cloud



SCOUT
470-016 Steel



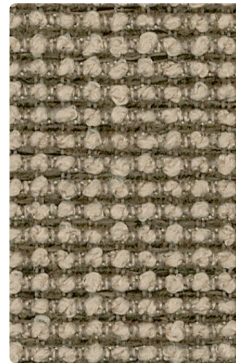
LEGACY
471-016 Slate



FORM
WC975-007 Zinc



ARCADE
AC-007 Sidewalk



FORM
WC975-017 Sandstone



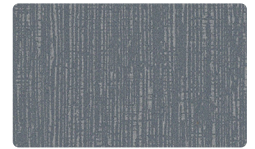
BALANCE
BA-006 Metal



BALANCE
BA-017 Stone



ARCADE
AC-006 Chrome



ARCADE
AC-026 Metal



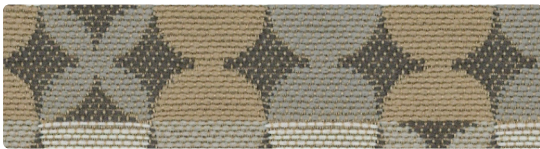
ARCADE
AC-017 Latte



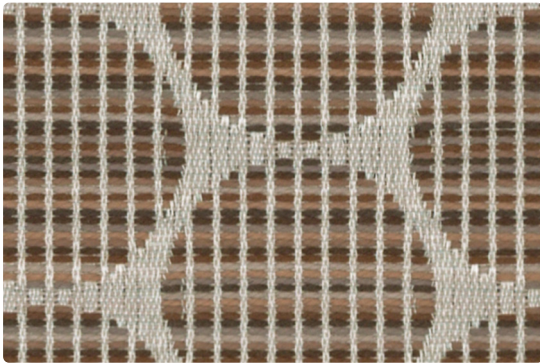
FORM
WC975-027 Cashew



FANFARE
WC965-017 Stone



TANGO
460-006 Flint



CENTRIC
WC979-000 Mocha



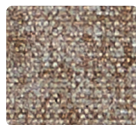
ARCADE
AC-000 Chocolate



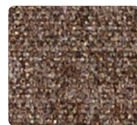
ARCADE
AC-036 Smoke



FEDORA
621-046 Light Grey



FEDORA
621-017 Fawn



FEDORA
621-000 Mink



FEDORA
621-056 Dew



FEDORA
621-016 Charcoal



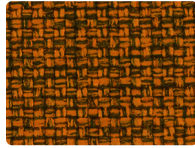
FEDORA
621-006 Bitumen



LEGACY
471-002 Topaz



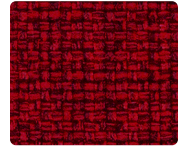
SCOUT
470-002 Brass



LEGACY
471-009 Pumpkin



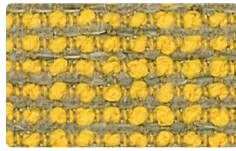
SCOUT
470-001 Campfire



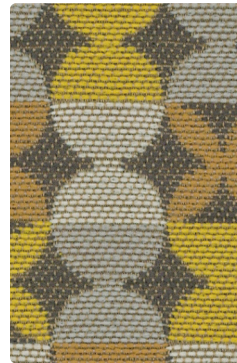
LEGACY
471-001 Cherry



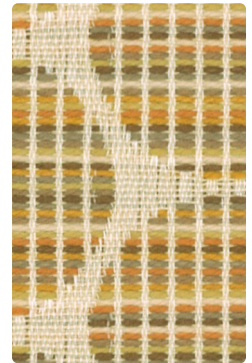
ARCADE
AC-002 Popcorn



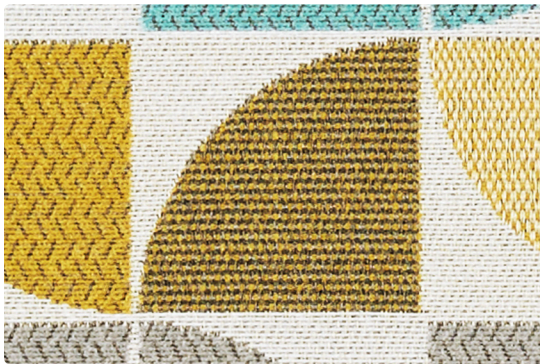
FORM
WC975-002 Canary



TANGO
460-002 Sunrise



CENTRIC
WC979-002 Saffron



FANFARE
WC965-002 Desert Sun



ARCADE
AC-009 Penny



BALANCE
BA-009 Copper



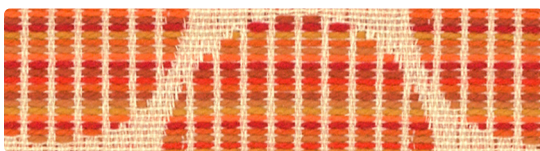
ARCADE
AC-010 Driftwood



BALANCE
BA-002 Caramel



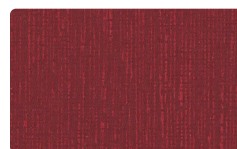
FANFARE
WC965-011 Sunset



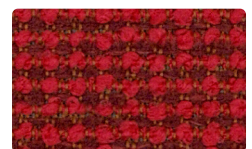
CENTRIC
WC979-009 Cinnamon



TANGO
460-001 Sangria



ARCADE
AC-001 Ruby



FORM
WC975-001 Flame



FEDORA
621-036 Dapper



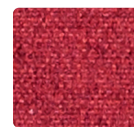
FEDORA
621-002 Topaz



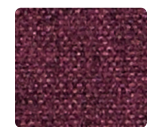
FEDORA
621-019 Tangelo



FEDORA
621-011 Tomato



FEDORA
621-001 Ruby



FEDORA
621-008 Plum



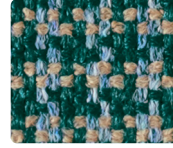
LEGACY
471-024 Lake



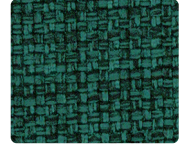
SCOUT
470-024 Admiral



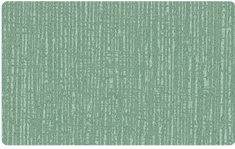
LEGACY
471-004 Cobalt



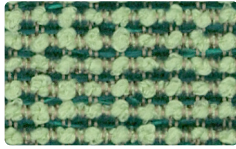
SCOUT
470-014 Aegean



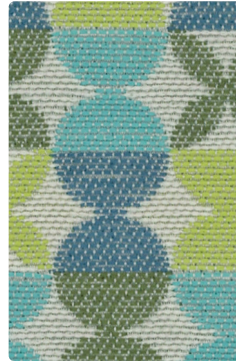
LEGACY
471-023 Mallard



ARCADE
AC-023 Menthol



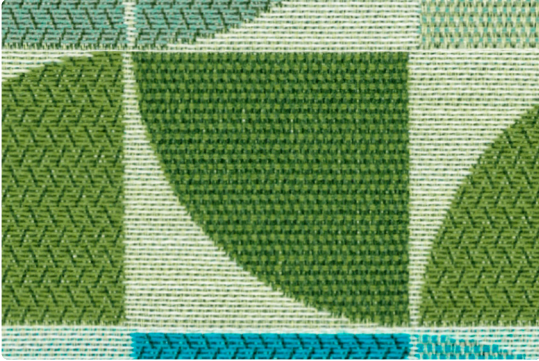
FORM
WC975-013 Mint



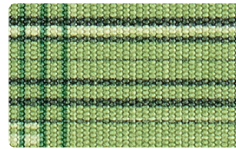
TANGO
460-013 Limeade



CENTRIC
WC979-003 Meadow



FANFARE
WC965-013 Meadow



BALANCE
BA-013 Jade



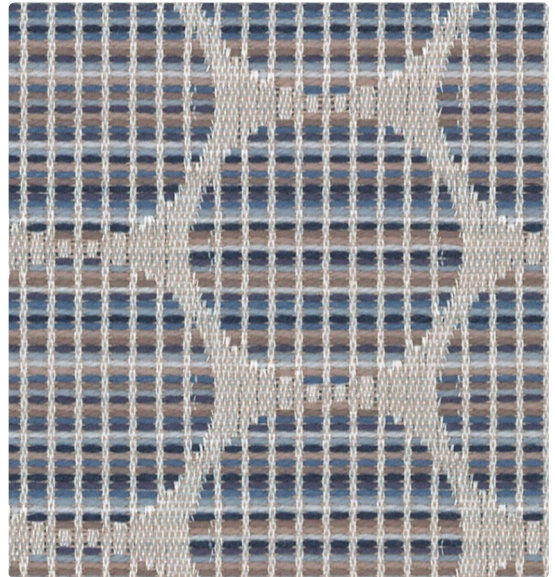
ARCADE
AC-013 Grass



BALANCE
BA-026 Grey Mist



ARCADE
AC-014 Sky



CENTRIC
WC979-004 Denim



TANGO
460-004 Skyline



FANFARE
WC965-014 Denim



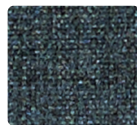
ARCADE
AC-004 Denim



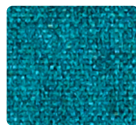
BALANCE
BA-004 Denim



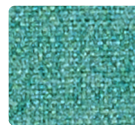
FEDORA
621-014 Indigo



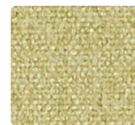
FEDORA
621-004 Midnight



FEDORA
621-053 Aegean



FEDORA
621-043 Aquamarine



FEDORA
621-023 Eucalyptus

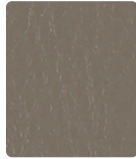


FEDORA
621-003 Cactus

CARESSA



CA-046
Stone



CA-076
Aluminum



CA-000
Coco



CA-016
Pewter



CA-026
Granite



CA-044
Cadet



CA-006
Black



CA-014
Admiral

NOMAD



NM-026
Pumice



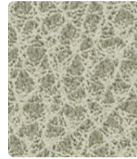
NM-056
Flint



NM-016
Carbon



NM-006
Night



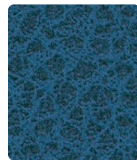
NM-027
Stone



NM-010
Saddle



NM-046
Hearth



NM-014
Persian

MINGLE



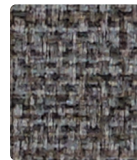
MG-007
Linen



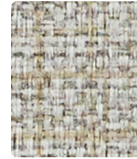
MG-017
Flax



MG-037
Haze



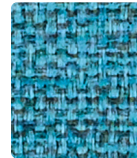
MG-006
Charcoal



MG-036
Rain



MG-026
Cloud



MG-014
Sky



MG-004
Indigo

MATKA



MT-020
Burnish



MT-000
Shiitake



MT-010
Mocha



MT-006
Midniacht



MT-036
Titanium



MT-016
Shadow



MT-014
Cerulean



MT-004
Lapis

ESSENCE



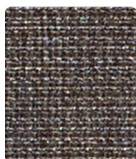
ES-007
Bone



ES-017
Stone



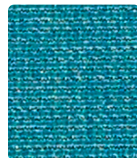
ES-016
Metal



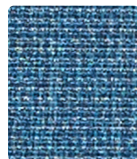
ES-010
Truffle



ES-013
Citron



ES-033
Peacock



ES-014
Indigo



ES-006
Charcoal

ZIP



ZP-007
Straw



ZP-000
Mocha



ZP-026
Storm



ZP-036
Coal



ZP-006
Fog



ZP-016
Haze



ZP-004
Sea



ZP-024
Denim

Technical Information

Zip Collection

Pattern 54"	Content and Backing	Certifications	Pattern Repeat	Finish	Abrasion Wyzenbeek	Light-Fastness	Flammability	Cleaning Code
ARCADE Directional	63% Polyurethane Polycarbonate - PVC Free / 2% Silicone face, 35% Polyester backing	GREENGUARD	Non-Matching	WRITE AWAY® - Soil & Stain Resistant Top Coat with Ink Resistant Technology	1,000,000 ^A Double Rubs	300 hours	Cal. 117-2013 NFPA 260/UFAC Class 1	WS, BC, CFC
BALANCE Directional	80% Vinyl - Phthalate Free face, 20% Polyester backing	GREENGUARD	23" H, 23.5" V	Soil & Stain Resistant Top Coat with Ink Resistant Technology	1,300,000 ^A Double Rubs	650 hours	Cal. 117-2013 NFPA 260/UFAC Class 1 BIFMA	W, BC, CFC
CARESSA	80% Vinyl - Phthalate Free face, 20% Polyester backing	GREENGUARD	None	Soil & Stain Resistant Top Coat with Ink Resistant Technology	650,000 ^A Double Rubs	1000 hours	Cal. 117-2013 NFPA 260/UFAC Class 1 FMVSS 302	BC, CFC
CENTRIC Directional	81% Polyester, 19% Post-Consumer Recycled Polyester Backing: Crypton®	GREENGUARD Gold	2.5" H, 1.375" V	Crypton® with Antimicrobial Silver Ion Technology	102,000 ^A Double Rubs	40 hours	Cal. 117-2013 NFPA 260/UFAC Class 1	W, C, BC
ESSENCE Directional	80% Vinyl - Phthalate Free face, 20% Polyester backing	GREENGUARD	None	Soil & Stain Resistant Top Coat with Ink Resistant Technology	250,000 ^A Double Rubs	200 hours	Cal. 117-2013 NFPA 260/UFAC Class 1	WS, BC, CFC
FANFARE Directional	100% Post-Consumer Recycled Polyester Backing: Crypton® Green	GREENGUARD Gold	14,938" H, 5.875" V	Crypton® Green with Antimicrobial Silver Ion Technology	75,000 ^A Double Rubs	40 hours	Cal. 117-2013 NFPA 260/UFAC Class 1	C, BC
FEDORA Directional Multi-use*	100% Polyester Backing: Polyester	GREENGUARD Gold	None	Stain Repellent - PFOA Free	100,000 ^A Double Rubs	40 hours	Cal. 117-2013 NFPA 260/UFAC Class 1 ASTM E84 (Unadhered) Class 1 or A	W
FORM Directional	84% Polyester, 16% Rayon Backing: Crypton®	GREENGUARD Gold	Non-Matching	Crypton® with Antimicrobial Silver Ion Technology	100,000 ^A Double Rubs	40 hours	Cal. 117-2013 NFPA 260/UFAC Class 1	W, C, BC
LEGACY	94% Polyester, 4% Polyurethane, 2% Silicone Backing: Fluid Barrier (Supreen) Polyurethane	GREENGUARD Gold	None	Supreen (Silicone) - PFC/PFOA Free	100,000 ^A Double Rubs	40 hours	Cal. 117-2013 NFPA 260/UFAC Class 1	WS, BC
MATKA Directional	80% Vinyl - Phthalate Free face, 20% Polyester backing	GREENGUARD	Non-Matching	Soil & Stain Resistant Top Coat with Ink Resistant Technology	250,000 ^A Double Rubs	500 hours	Cal. 117-2013 NFPA 260/UFAC Class 1	WS, BC, CFC
MINGLE Directional	80% Vinyl - Phthalate Free face, 20% Polyester backing	GREENGUARD	None	Soil & Stain Resistant Top Coat with Ink Resistant Technology	250,000 ^A Double Rubs	300 hours	Cal. 117-2013 NFPA 260/UFAC Class 1 FMVSS 302	WS, BC, CFC
NOMAD	62% Polyurethane Polycarbonate - PVC Free/3% Silicone face, 35% Polyester backing	GREENGUARD	None	WRITE AWAY® - Soil & Stain Resistant Top Coat with Ink Resistant Technology	1,000,000 ^A Double Rubs	200 hours	Cal. 117-2013 NFPA 260/UFAC Class 1	WS, BC, CFC
SCOUT Directional	91% Polyester, 7% Polyurethane, 2% Silicone Backing: Fluid Barrier (Supreen) Polyurethane	GREENGUARD Gold	0.275" H, 0.275" V	Supreen (Silicone) - PFC/PFOA Free	100,000 ^A Double Rubs	40 hours	Cal. 117-2013 NFPA 260/UFAC Class 1	WS, BC
TANGO Directional	100% Polyester Backing: Acrylic	GREENGUARD Gold	4.8" H, 4.8" V	Stain Repellent - PFOA & PFOS Free	80,000 ^A Double Rubs	40 hours	Cal. 117-2013 NFPA 260/UFAC Class 1	S
ZIP Directional	78% Vinyl - Phthalate Free face, 22% Polyester backing	GREENGUARD	None	Soil & Stain Resistant Top Coat	100,000 ^A Double Rubs	1000 hours	Cal. 117-2013 NFPA 260/UFAC Class 1	BC, CFC

REDUCED ENVIRONMENTAL IMPACT

These products are GREENGUARD Certified or GREENGUARD Gold Certified for low chemical and particle emissions to UL standard UL 2818 and may contribute to LEED certification.

No FR Additives

Arcade, Balance, Essence, Fedora, Legacy, Matka, Mingle, Nomad, Scout, Tango, Zip
No Antimicrobial Additives

Arcade, Caressa, Essence, Fedora, Legacy, Matka, Mingle, Nomad, Scout, Tango, Zip
No Antibacterial Additives

CARE AND CLEANING INFORMATION

S: Solvent W: Water-Based Cleaner WS: Water/Solvent Cleaner

C: Crypton Cleaning CFC: Coated Fabrics Cleaning - Refer to Mayer website for complete cleaning info.

BC: Bleach Cleanable - 1 part bleach, 9 parts water = 10% bleach, 90% water solution. Do not clean/disinfect fabric for longer than 10 minutes using the 10% bleach solution. Always rinse promptly with clean water after applying the bleach solution. Failure to do so will void any and all warranties.

DYE TRANSFER DISCLAIMER

Certain clothing and accessory dyes (such as those used on denim jeans) may migrate to lighter colors. This phenomenon is increased by humidity and temperature and is irreversible. Mayer Fabrics will not assume responsibility for dye transfer caused by external contaminants. Please check compatibility when using this product in combination with painted or varnished surfaces.

ADDITIONAL INFORMATION

*Abrasion test results exceeding ACT Performance Guidelines are not an indicator of product lifespan. Multiple factors affect fabric durability and appearance retention.

*A multi-use fabric that can be used for upholstery, panels, wrapped walls, and acoustic.

Warranty: Please refer to the Mayer website for warranty information by pattern.

Custom Colors: All patterns can be custom colored. Minimum yardage applies.

Complete and current product information available at mayerfabrics.com.



These fabrics meet or exceed these ACT performance guidelines.
*Certification Marks owned by ACT®

©2021 KIZCMUCD MF1021

TexTile3D™
by Mayer Fabrics

For additional colors, pre-approved patterns, grade-ins, samples and specifications, please refer to the Mayer TexTile3D link.