



Kimball®

BOYD®





## MAKE A STATEMENT

Boyd's residential styling adds a warm, welcoming appeal to any workspace. In lobbies, common areas, or private offices, it creates a natural place to work, relax or socialize.



# BOYD®

---

The crisp, straight-edged lines of Boyd lounge gives it a contemporary style that makes any office environment look fresh. Optional contrasting upholstery and back tufting let you vary the look to suit your needs.

---

## STATEMENT OF LINE



### One-Seat

Height 32"  
Width 28½"  
Depth 30"



### Two-Seat

Height 32"  
Width 51"  
Depth 30"



### Three-Seat

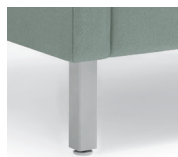
Height 32"  
Width 73½"  
Depth 30"

---

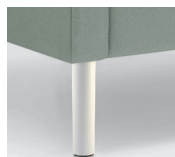
## FEATURES & OPTIONS

- Contrasting upholstery may be specified on the outer frame, back cushion, and seat cushion
  - Arms feature a sewn slipcover over top high-grade foam
  - Attached seat cushion is 6" thick and made of high-grade, laminated polyurethane
  - Frame is constructed of plywood utilizing lap-joint construction
  - Round and Square legs are offered in Platinum Metallic, Designer White, and Cinder
  - Y legs are offered in Platinum Metallic, Cinder and Polished
  - Sewn-tufted back
  - Leg options include square, round and y
- 

## DETAILS



Square Leg



Round Leg



Y Leg



Standard Back



Sewn-Tufted Back



Contrasting Upholstery

---