

Universal LED Lighting

Daisy Chain LED Task Light

Tools Required

- Cordless Drill
- 3/32" Drill Bit
- #2 Phillips Screwdriver Bit

Hardware Required

- (2) #8 X 1/2" Pan Head Phillips Screws per light fixture (for installation on non metal surface only)
- (2) Adhesive backed plastic wire clips
- (2) Jumper Cords (Option 1)
- (1) Jumper Pin (Option 2)
- (1) Jumper Pin Cover (Option 2)

Installation

For Magnet Mount: (under metal surface)

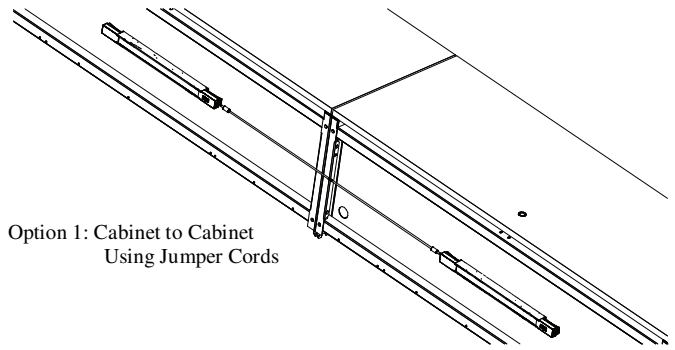
Note: A maximum of 3 light fixtures may be Daisy Chained together.

Determine which type of mounting is needed Option 1 or Option 2. (Figure A & B).

Option 1:

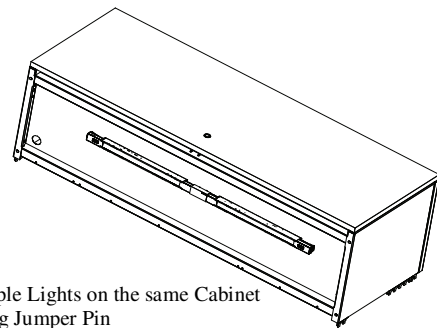
1. For use with jumper cables when jumping lights from cabinet to cabinet. Plug the ends of the jumper cable into the ends of the light fixtures.
2. Position light fixtures under the metal cabinet surface where desired until magnets engage. Magnets are concealed inside the fixture.
3. Adjust the fixture location by sliding the fixtures side to side and front to back as needed.
4. Plug the male end of the power supply box into either end of the light fixtures. Plug the male end of the 3 prong power cord into the power supply box.(Figure C).
5. Route the cords and install adhesive backed wire clips as needed to hold the cords in the proper locations.
6. Plug the power supply into a receptacle.

Figure A



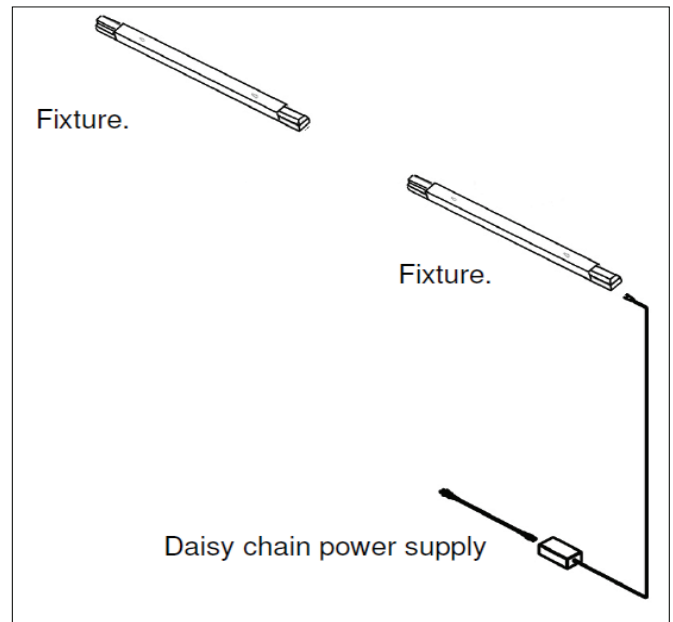
Option 1: Cabinet to Cabinet Using Jumper Cords

Figure B



Option 2: Multiple Lights on the same Cabinet Using Jumper Pin

Figure C



Universal LED Lighting

Option 2:

1. For use with jumper pins when mounting two lights on the same cabinet. (Figure B).
2. Plug the end of the jumper pin into one end of a light fixture (Figure D). Slide the jumper cover in place over the first light fixture and then slide the next light fixture so the opposite end of the jumper pin plugs in the next light. (Figure E).
3. Position light fixtures under the metal cabinet surface where desired until magnets engage. Magnets are concealed inside the fixture.
4. Adjust the fixture location by sliding the fixtures side to side and front to back as needed.
5. Plug the male end of the power supply box into either end of the light fixtures. Plug the male end of the 3 prong power cord into the power supply box.(Figure C).
6. Route the cords and install adhesive backed wire clips as needed to hold the cords in the proper locations.
7. Plug the power supply into a receptacle.

Figure D

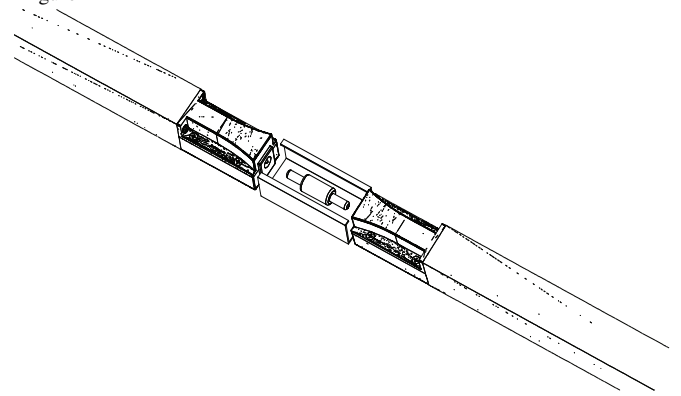
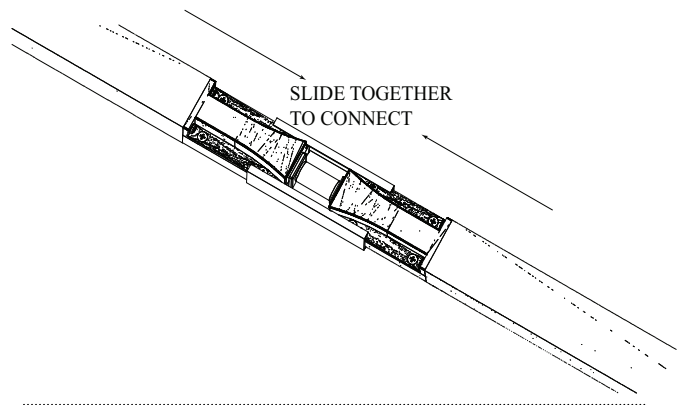


Figure E



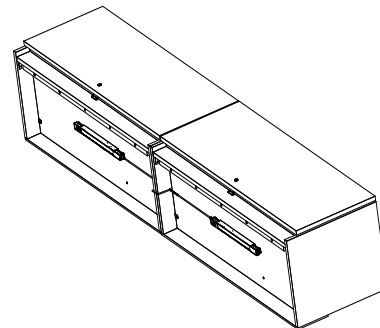
For Non Metal Mount: (wood surface)

Note: A maximum of 3 light fixtures may be Daisy Chained together.

Determine which type of mounting is needed Option 1 or Option 2. (Figure F & G).

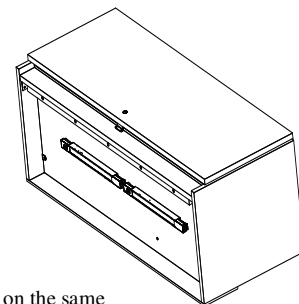
1. Option 1: For use with jumper cables when jumping lights from cabinet to cabinet. (Figure F).
 Determine the approximate locations for mounting the light fixture under each wood cabinet and make two centerline marks at the following distances apart:
 16" light fixture Dimension "A" = 3 5/8"
 25" light fixture Dimension "A" = 12 13/16"
 30" light fixture Dimension "A" = 16 5/8"
2. Drill a 3/32" diameter by 1/2" deep hole at each centerline location.
3. Install a screw in each hole until there is approximately 1/16" relief between the head of the screw and the wood cabinet surface.

Figure F



Option 1: Cabinet to Cabinet

Figure G



Option 2: Multiple Lights on the same Cabinet Using Jumper Pin

Proper product installation, in accordance with these instructions, is the responsibility of the installing agent. If you have any questions concerning these instructions, please call Kimball Office Customer Care.

Kimball[®]Office

Universal LED Lighting

4. Locate the light fixture over the head of the screws and slide the light fixture to engage the screws in the key slot on the light fixture. (Figure H).
5. Plug the end of the power supply into either end of the light fixture. (Figure C).
6. Route the cords and install adhesive backed wire clips as needed to hold the cords in the proper locations.
7. Plug the power supply into a receptacle

Option 2:

1. For use with jumper pins when mounting two lights on the same cabinet. (Figure I).
 Determine the approximate locations for mounting the light fixtures under the wood cabinet and make four centerline marks per the dimensions in (Figure I).
 16" light fixture Dimension "A" = 3 5/8"
 25" light fixture Dimension "A" = 12 13/16"
 30" light fixture Dimension "A" = 16 5/8"

Note: Lights must be orientated as shown (with switches on the same side.)

2. Drill a 3/32" diameter by 1/2" deep hole at each centerline location.
3. Install a screw in each hole until there is approximately 1/16" relief between the head of the screw and the wood cabinet surface.
4. Plug the end of the jumper pin into one end of a light fixture (Figure D). Slide the jumper cover in place over the first light fixture and then slide the next light fixture so the opposite end of the jumper pin plugs in the next light. (Figure E).
5. Locate the light fixture over the head of the screws and slide the light fixture to engage the screws in the key slot on the light fixture. (Figure J).
6. Plug the end of the power supply into either end of the light fixture. (Figure C).
7. Route the cords and install adhesive backed wire clips as needed to hold the cords in the proper locations.
8. Plug the power supply into a receptacle.

Figure H

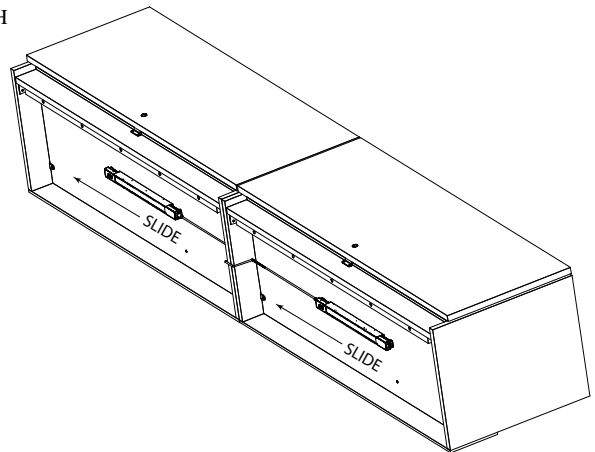


Figure I

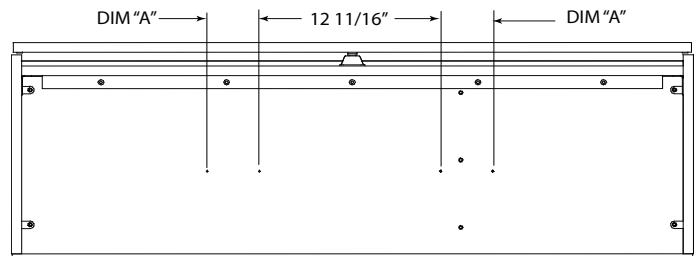


Figure J

