

CONFERENCE TABLE FRAME WOOD LEGS

Tools Required

- Cordless driver with magnetic post and following tips
 - M5 Hex Drive
 - M4 Hex Drive
 - #2 Phillips Drive

Hardware Required (Included)

- 6— GLIDES WITH M10 THREADS
- 8-M8-1.25 X 16 FLATHEAD CAP SCREWS
- QNTY VARIES-#10 X 5/8" PANHEAD PHILLIPS WOOD SCREWS
- 4—M6-1 X 20 FLATHEAD CAP SCREWS
- 4—#10 X 2" PANHEAD PHILLIPS WOOD SCREW

Installation

1. Unpack frame and hardware.
2. Attach Legs to Frame using supplied M6 Flathead Cap Screws as shown in Figure A.
3. Install Glides, install Flathead Cap Screws and slide Spacers on welded tabs as shown in Figure B.
4. Slide Conference Frames on the Welded Tabs of the Mid Support Leg on both sides as seen in Figure C. Ensure there is no gap between Rail and the Leg.
5. Using the M5 Hex Drive, Turn the Cap Screws **COUNTER-CLOCKWISE**, backing the screws out until it presses firmly against the inside of the Horizontal Rail. See Figure D.
6. Access Panels are hung between the legs of the Mid Support Leg after the complete frame assembly is complete and turned right side up as shown in Figure E.
7. The provided Woodscrews will be used to attach the work-surfaces.

Figure A

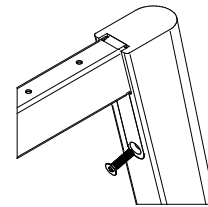
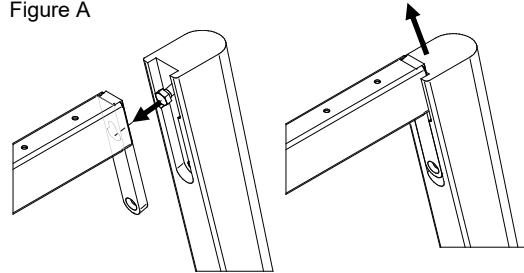


Figure B

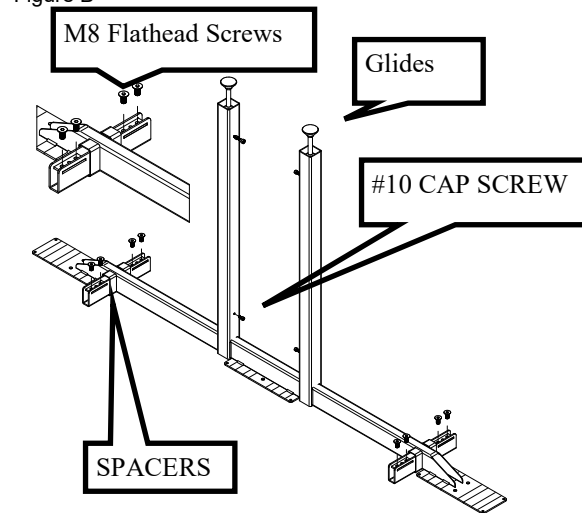


Figure C

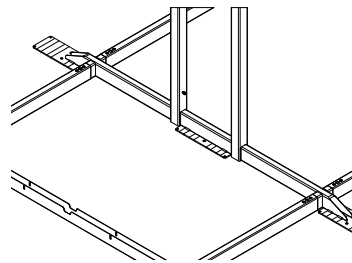


Figure E

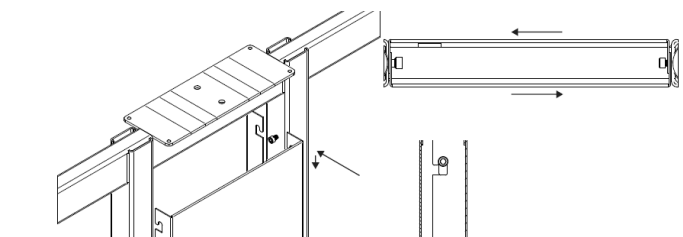
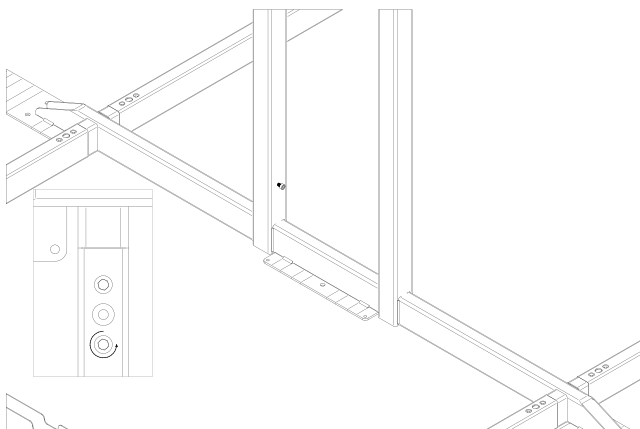


Figure D



Proper product installation, in accordance with these instructions, is the responsibility of the installing agent. If you have any questions concerning these instructions, please call Kimball Office Customer Care.

Kimball®Office