

Screen Solutions

GUIDE FOR SPATIAL DIVISION

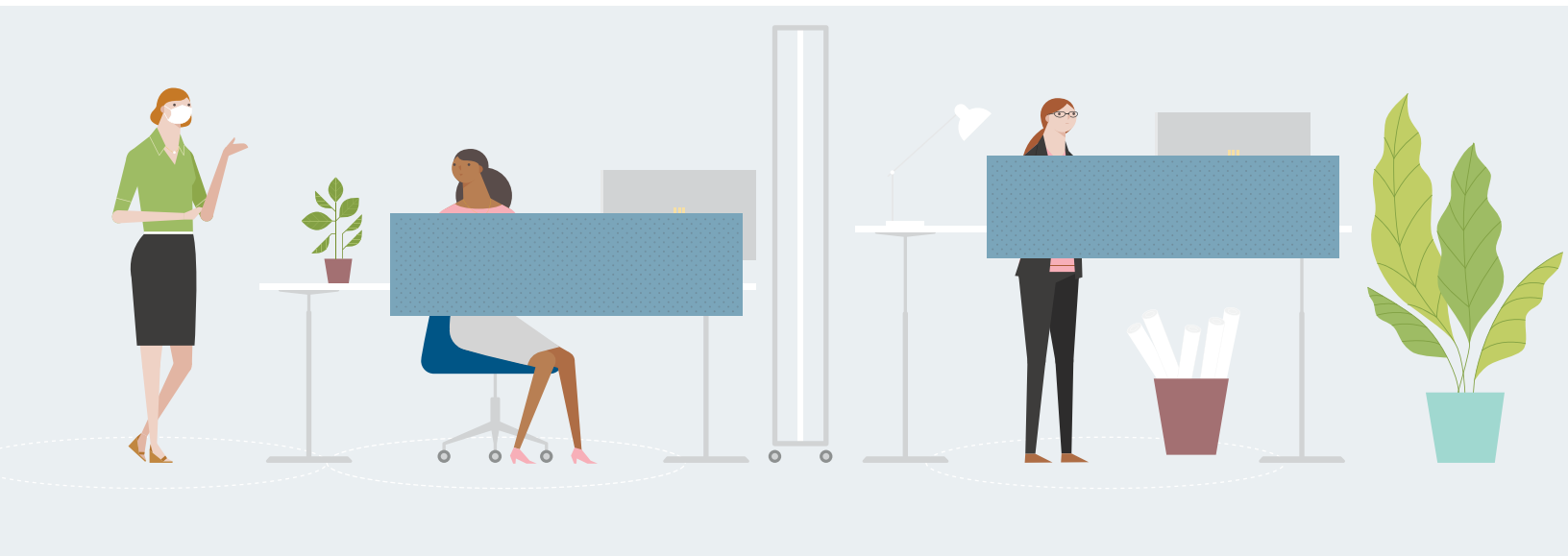


TABLE OF CONTENTS

Accommodate new ways of working by utilizing your existing products and blending new solutions into workspaces.

Create space division by adding a screen to your workspace. Select the screen style that best fits your needs: Set-On Surface, Edge-Mount, Clamp-Mount, Full Metal Edge-Mount, or Freestanding.

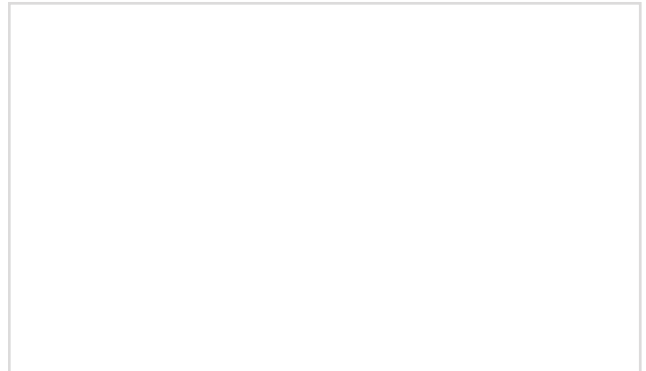
- Select style and height of screen based on floorplate layout and occupancy density. Taller screens are appropriate when employees must be situated face-to-face or are near high-traffic areas.
- Create additional shielding by adding Set-On Surface screens to stations that already have existing edge-mount screens.
- Screens are available in a variety of materials.
- Compatible with: Xsede® Height Adjust, Xsede® Height Adjust Benching, Xsede® Static Benching, Priority™, Dock®, Footprint®, Narrate®, Xsite®.

Keep in mind that it is essential to balance the need for privacy and protection with the overall feeling of the workplace environment.

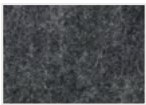
[Reference the Divider Screen Price List for more information.](#)

Set-On Screen.....	3
Edge-Mount Screen.....	4
Edge-Mount Divider/Modesty Screen.....	5
Clamp-Mount Screen.....	6
Narrate® & Xsite® Panel-Mount Privacy Screen.....	7
Universal Panel-Mount Screen.....	8
Surface-to-Floor Screen.....	9
Floor Screen.....	10
Full Edge-Mount.....	11

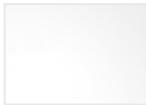
SET-ON SCREEN



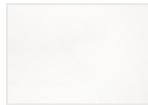
SCREEN MATERIALS



NORDIC KNIT
PET



CLEAR
RESIN

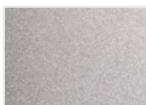


FROSTED
RESIN

BRACKET MATERIALS



CINDER
PAINT



PLATINUM METALLIC
PAINT

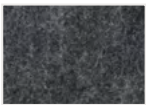
FEATURES & OPTIONS

- Resin and PET screens have radiused corners
- Resin thickness - 3/16"
- PET thickness - 1/2"
- Foot dimensions - 3"W x 5"D
- Clear rubber bumpers on bottom of brackets
- Available in 21" - 72" widths
- Available in 18", 24", and 30" height

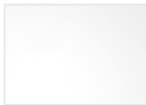
EDGE-MOUNT SCREEN



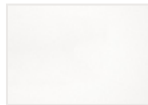
SCREEN MATERIALS



NORDIC KNIT
PET



CLEAR
RESIN

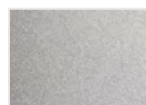


FROSTED
RESIN

BRACKET MATERIALS



CINDER
PAINT



PLATINUM METALLIC
PAINT

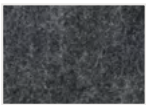
FEATURES & OPTIONS

- Flush-mount and Wire-gap brackets available. Wire-gap bracket provides 1" for cord management
- Resin thickness - $\frac{3}{16}$ "
- PET thickness - $\frac{3}{16}$ "
- Fits on $1\frac{3}{16}$ " and $1\frac{9}{16}$ " worksurface thicknesses
- Available in 21" - 72" widths
- Available in 24", 30", and 40" height
- Extends 4" below worksurface

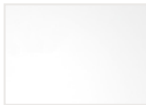
EDGE-MOUNT DIVIDER/MODESTY SCREEN



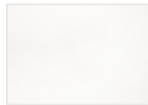
SCREEN MATERIALS



NORDIC KNIT
PET



CLEAR
RESIN

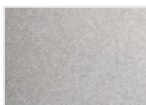


FROSTED
RESIN

BRACKET MATERIALS



CINDER
PAINT

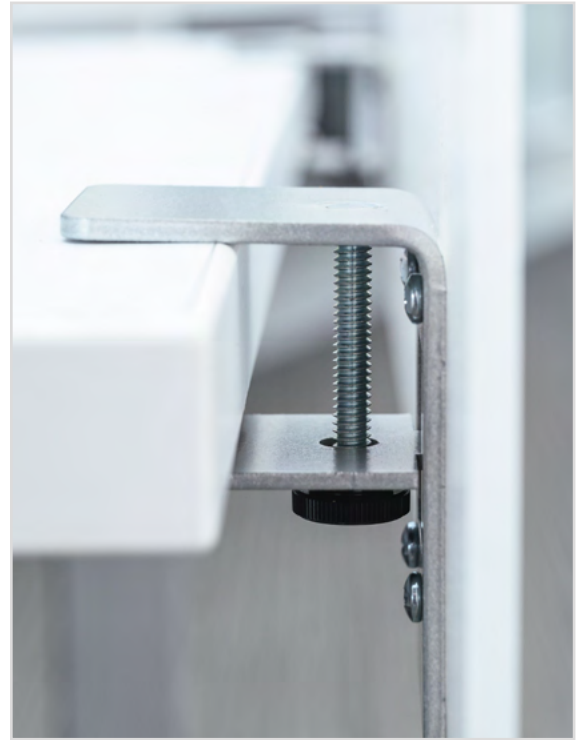


PLATINUM METALLIC
PAINT

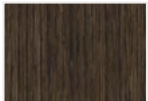
FEATURES & OPTIONS

- Flush-mount and Wire-gap brackets available. Wire-gap bracket provides 1" for cord management
- Resin thickness - $\frac{3}{16}$ "
- PET thickness - $\frac{3}{16}$ "
- Fits on $1\frac{3}{16}$ " and $1\frac{9}{16}$ " worksurface thicknesses
- Available in 21" - 72" widths
- Available in 32", 38", and 44" height
- Extends 12" below worksurface

CLAMP-MOUNT SCREEN



SCREEN MATERIALS



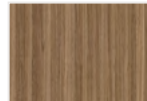
CANYON
TFL



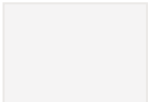
DRIFTWOOD
TFL



MONTEREY
TFL



TUSCAN
TFL



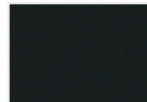
DESIGNER WHITE
TFL



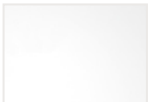
CLOUD
TFL



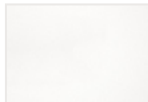
GRAPHITE
TFL



CINDER
TFL



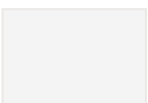
CLEAR
RESIN



FROSTED
RESIN

[SEE PRICE LIST FOR COMPLETE SCREEN MATERIAL OPTIONS](#)

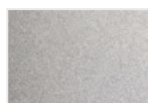
BRACKET MATERIALS



DESIGNER WHITE
PAINT



CINDER
PAINT



PLATINUM METALLIC
PAINT

FEATURES & OPTIONS

- Sized down to avoid pinch points on height adjust surfaces, as well as when both front and side screens are specified
- Resin thickness - 1/4"
- TFL thickness - 7/16"
- TFL is available in solid or woodgrain
- Wood grain TFL runs horizontally
- Edges in matching 1mm edgeband
- Fits on 3/4" and 1 3/16" worksurface thicknesses
- Available in 21" - 72" widths
- Available in 27" height

QUICKSHIP FEATURES

- Ships in ten days or less
- Quickship model screens are only available in Designer White TFL
- Quickship model brackets are only available in Cinder or Platinum Metallic

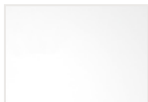
NARRATE® & XSITE® PANEL-MOUNT PRIVACY SCREEN



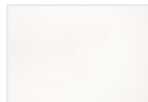
SCREEN MATERIALS



CLEAR
GLASS



CLEAR
RESIN



FROSTED
RESIN

BRACKET MATERIALS

[SEE PRICE LIST FOR PAINT OPTIONS](#)

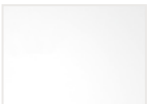
FEATURES & OPTIONS

- Resin thickness - ¼" for both Narrate and Xsite
- Glass thickness - ¼" for both Narrate and Xsite
- Painted Metal Brackets
- For Narrate Brackets:
 - Specify connection to Support Traxx (ST) or Trim Traxx (TT); metal bracket quantity determined by glass width
- For Xsite Brackets:
 - For use with Flat profile top cap
 - Connects to Xsite Traxx; metal bracket quantity determined by glass width
- Available in 24", 30", 36", 42", and 48" widths for both Narrate and Xsite
- Available in 18" height for both Narrate and Xsite

UNIVERSAL PANEL-MOUNT SCREEN



SCREEN MATERIALS



CLEAR
GLASS



CLEAR
RESIN



FROSTED
RESIN

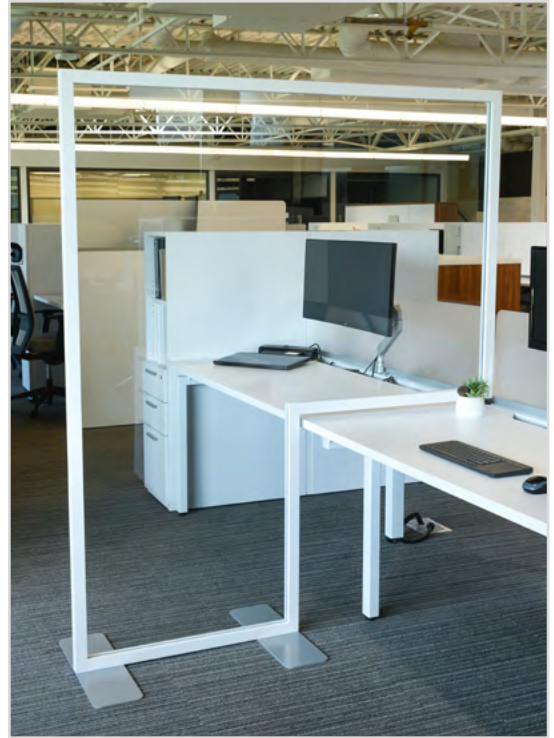
BRACKET MATERIALS

[SEE PRICE LIST FOR PAINT OPTIONS](#)

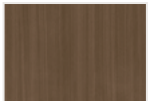
FEATURES & OPTIONS

- Resin thickness - ¼"
- Glass thickness - ¼"
- Brackets accommodate 1 ½" to 2 ½" thick:
 - System panels with flat top cap
 - Interworks EQ panels
 - Narrate plywood end panels
- Brackets accommodate 2 ½" to 3 ½" thick:
 - Narrate panels
 - Xsite panels with flat top cap
 - Cetra panels with softened, square, or transitional top caps
- Available in 24", 30", 36", 42", and 48" widths
- Available in 18" height

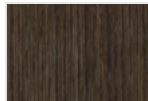
SURFACE-TO-FLOOR SCREEN



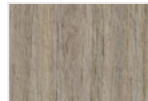
SCREEN MATERIALS



ALMOND
TFL



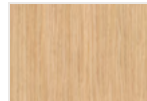
CANYON
TFL



DRIFTWOOD
TFL



MIDTOWN WALNUT
TFL



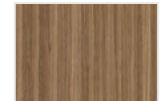
MONTEREY
TFL



PORTOBELLO
TFL



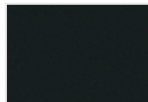
SABLE
TFL



TUSCAN
TFL



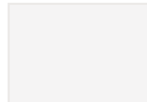
ANTIQUE WHITE
TFL



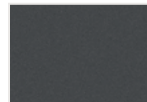
CINDER
TFL



CLOUD
TFL



DESIGNER WHITE
TFL



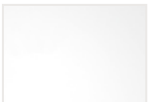
GRAPHITE
TFL



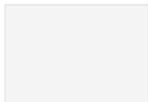
SANDSTONE
TFL



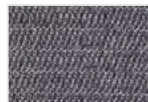
STORM
TFL



CLEAR
GLASS



DESIGNER WHITE
MARKERBOARD



INFUSE
GRADE A



MERGE
GRADE A



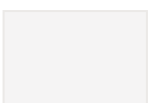
PACT
GRADE B



NORDIC KNIT
PET

[SEE PRICE LIST FOR COMPLETE SCREEN MATERIAL OPTIONS](#)

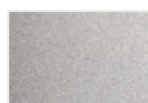
FRAME MATERIALS



DESIGNER WHITE
PAINT



CINDER
PAINT



PLATINUM METALLIC
PAINT

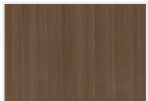
FEATURES & OPTIONS

- Works with fixed-height worksurfaces, providing 30" or 42" separation above surface height
- Screen surface height is 28 3/4" with 3/8" glide adjustment to 29 3/8"
- 48" D screens work with 24" D surfaces, 60" D screens work with 30" D surfaces
- Flat metal feet with clear rubber bumpers
- Foot dimensions are 6" D x 19 1/2" W x 1 1/4" H
- Available in 60" and 72" height

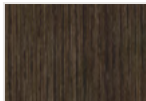
FLOOR SCREEN



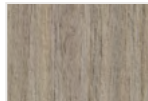
SCREEN MATERIALS



ALMOND
TFL



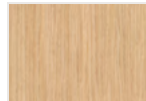
CANYON
TFL



DRIFTWOOD
TFL



MIDTOWN WALNUT
TFL



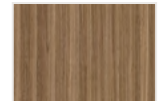
MONTEREY
TFL



PORTOBELLO
TFL



SABLE
TFL



TUSCAN
TFL



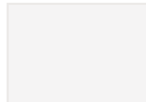
ANTIQUE WHITE
TFL



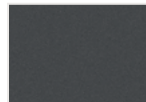
CINDER
TFL



CLOUD
TFL



DESIGNER WHITE
TFL



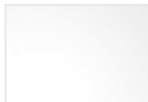
GRAPHITE
TFL



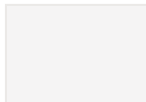
SANDSTONE
TFL



STORM
TFL



CLEAR
GLASS



DESIGNER WHITE
MARKERBOARD



INFUSE
GRADE A



MERGE
GRADE A



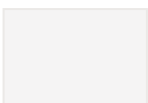
PACT
GRADE B



NORDIC KNIT
PET

[SEE PRICE LIST FOR COMPLETE SCREEN MATERIAL OPTIONS](#)

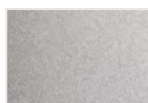
FRAME MATERIALS



DESIGNER WHITE
PAINT



CINDER
PAINT



PLATINUM METALLIC
PAINT

FEATURES & OPTIONS

- Frame thickness - 1 1/2" x 1 1/2"
- 60" H frame has 18" D x 4" W x 1/4" H feet
- 72" H frame has 19 1/2" D x 6" W x 1/4" H feet
- Aluminum painted frame
- Static and mobile models available
- Ganging bracket available to connect static screens
- Available in 24", 30", 36", 42", and 48" widths

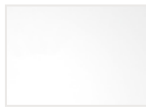
FULL EDGE-MOUNT SCREEN



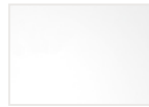
SCREEN MATERIALS



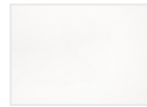
NORDIC KNIT
PET



CLEAR
GLASS

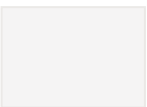


CLEAR
RESIN



FROSTED
RESIN

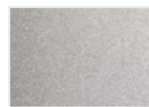
BRACKET MATERIALS



DESIGNER WHITE
PAINT



CINDER
PAINT



PLATINUM METALLIC
PAINT

FEATURES & OPTIONS

- Sized down to avoid pinch points on height adjust surfaces, as well as when both front and side screens are specified
- Resin thickness - ¼"
- Glass thickness - ¼"
- PET thickness - ½"
- PET screens have radiused corners
- Fits on 1 3/16" and 1 9/16" worksurface thicknesses
- Metal mounting bracket
- Available in 21" - 72" widths
- Available in 25" height for Glass and Resin
- Available in 24" and 30" height for PET