

# Moxie

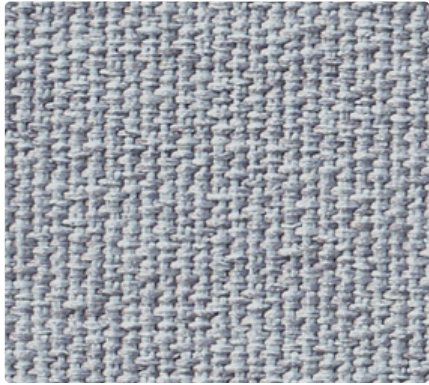
Seating Upholstery Collection

Entwine

Mélange

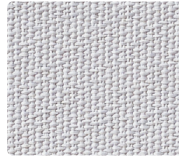
Spark

Zig Zag



**MÉLANGE**

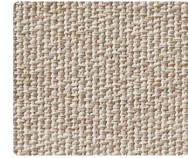
Lead 14110



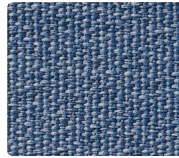
Alloy 14115



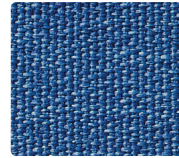
Stucco 14112



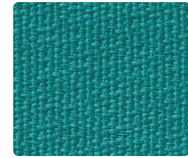
Pumice 14113



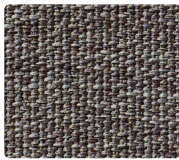
Denim 14124



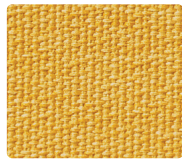
Night Sky 14116



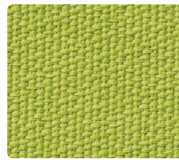
Aspen 14117



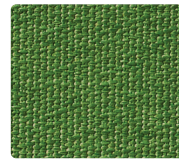
Ebony 14111



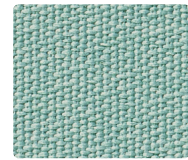
Dijon 14120



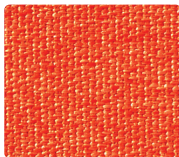
Leet 14123



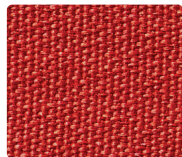
Aloe 14119



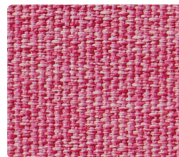
Wave 14125



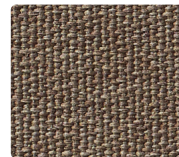
Red Pepper 14118



Cherry 14122



Pansy 14121



Coffee Bean 14114

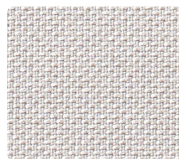


Lead 14110

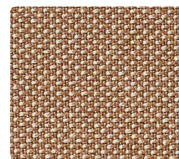


**SPARK**

Marine 15002



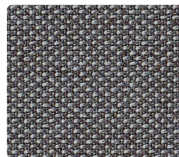
Cloud 15006



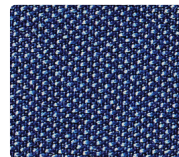
Mocha 15112



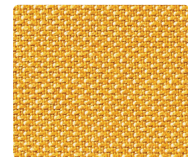
Asphalt 15007



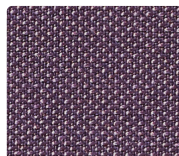
Jet 15008



Marine 15002



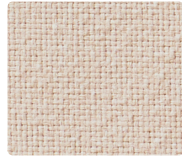
Topaz 15009



Jam 15003



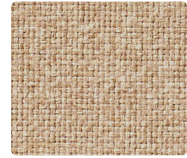
**ENTWINE**  
Sky 13118



Driftwood 13111



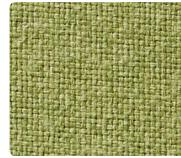
Coconut 13113



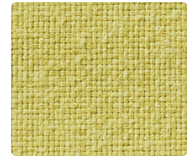
Khaki 13114



Sage 13116



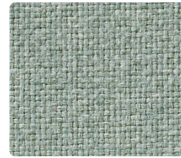
Fatigue 13121



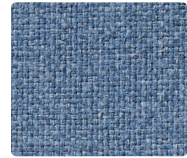
Pistachio 13120



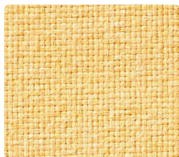
Pewter 13112



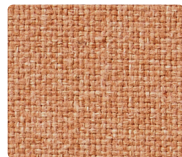
Azure 13123



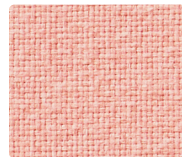
Deep Sea 13117



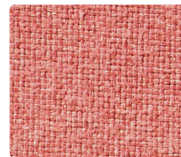
Star 13115



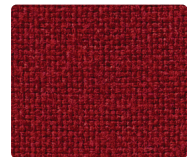
Squash 13125



Rose 13129



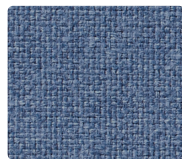
Berry 13119



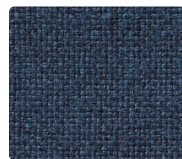
Scarlet 13124



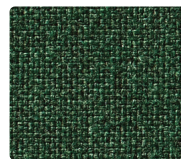
Iron 13110



Mykonos 13122



Harbor 13127



Emerald 13126



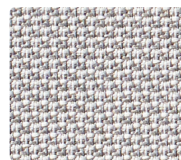
Space 13128



**ZIG ZAG**  
Salmon 12115



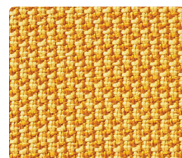
Ecru 12111



Cloud 12110



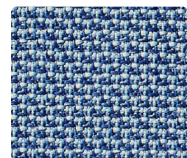
Granite 12120



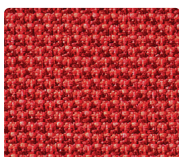
Sunny 12112



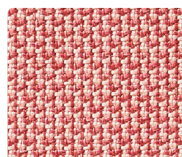
Leaf 12113



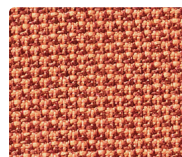
Marine 12117



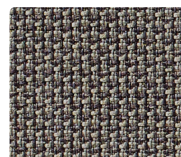
Cardinal 12118



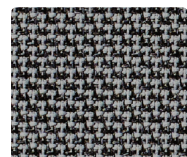
Rouge 12114



Cinnamon 12119



Cocoa 12116



Ink 12121

# Moxie

	Entwine	Mélange	Spark	Zig Zag
Grade	1	1	1	1
Content	100% Polyester (60% Post-consumer Recycled Polyester)	100% Polyester (75% Post-consumer Recycled Polyester)	100% Polyester (70% Post-consumer Recycled Polyester)	100% Polyester (63% Post-consumer Recycled Polyester)
Finish/Backing	PFOA-Free Stain Repellent	PFOA-Free Stain Repellent/Latex	PFOA-Free Stain Repellent/Latex	PFOA-Free Stain Repellent/Latex
Antimicrobial	No	No	No	No
Flame Retardants	No	No	No	No
Repeat - Horizontal/Vertical	None	None	None	None
Railroad	No	No	No	No
Width	54"	54"	54"	54"
Abrasion/Wyzenbeek (ASTM D4157)	100,000 Double Rubs	100,000 Double Rubs	100,000 Double Rubs	100,000 Double Rubs
Breaking Strength	282 lbs Warp, 249 lbs Fill	110 lbs Warp, 115 lbs Fill	148 lbs Warp, 265 lbs Fill	248 lbs Warp, 206 lbs Fill
Colorfastness To Light AATCC 16.1	Class 4/40 hrs	Class 4/40 hrs	Class 4/40 hrs	Class 4/40 hrs
Crocking Class 3 Wet, Class 4 Dry (ASTM D3597, AATCC 8)	Grade 4 min. dry & Grade 4 min. wet	Grade 4 min. dry & Grade 4 min. wet	Grade 4 min. dry & Grade 4 min. wet	Grade 4 min. dry & Grade 4 min. wet
Pilling	Class 4	Class 4	Class 4	Class 4
Seam Slippage	160 lbs Warp, 172 lbs Weft	67 lbs Warp, 68 lbs Weft	90 lbs Warp, 135 lbs Weft	44 lbs Warp, 40 lbs Weft
California TB 117-2013	Pass	Pass	Pass	Pass
NFPA 260	Class 1	Class 1	Class 1	Class 1
UFAC	Class 1	Class 1	Class 1	Class 1
Cleaning Code	W-S	W-S	W-S	W-S
Bleach Disinfectable	No	No	No	No
Dye Transfer/ Reverse Crocking	Some upholsteries may experience dye transfer (clothing dyes transfer to the seating fabric). This does not mean that the fabric of application is deficient, but rather it is an inherent characteristic of that fabric or application and is considered normal behavior. Once the dye transfer occurs, it is irreversible.			

Please reference price list for product applications. Product details and other data are subject to change without notice.

We will always ship a satisfactory commercial color match. Due to industry standard dye lot variations, colors may not match exactly. Cut yardage and individual memo samples are available. Contact National Customer Service for pricing availability.

WS - Use water-based cleaning agents or foam. Mild water-free solvents may also be used. Cleaning by a professional furniture service is recommended.