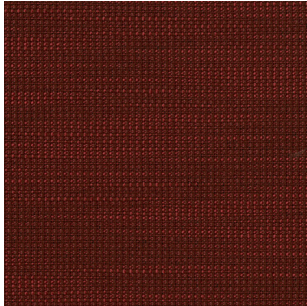


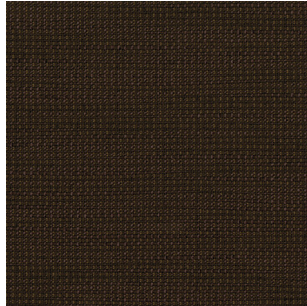
# Ridge

Seating Upholstery Collection

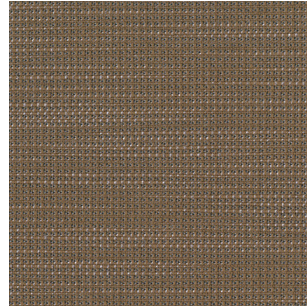
GRADE 1



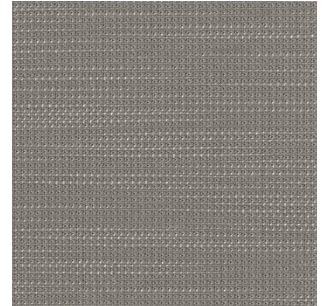
Crimson  
12005



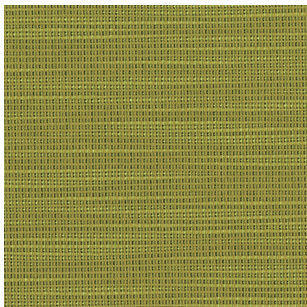
Driftwood  
12006



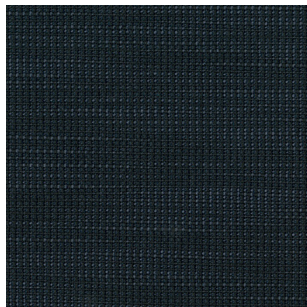
Dune  
12012



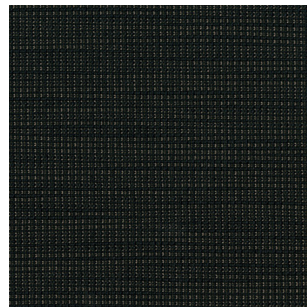
Fog  
12004



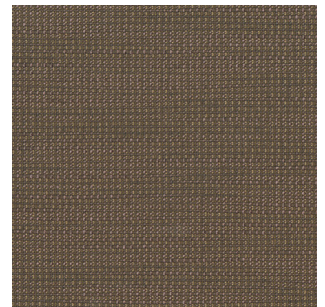
Meadow  
12001



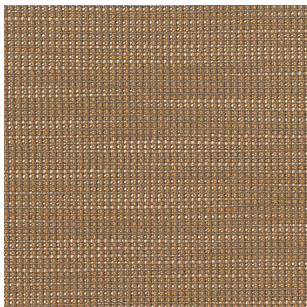
Midnight  
12010



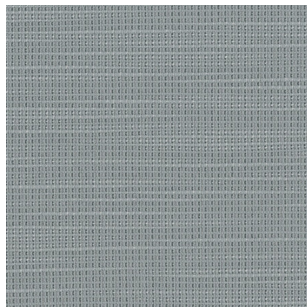
Peak  
12007



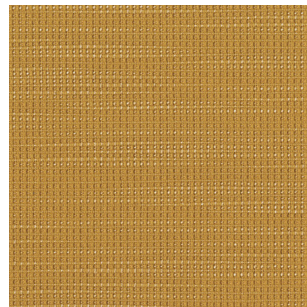
Pebble  
12008



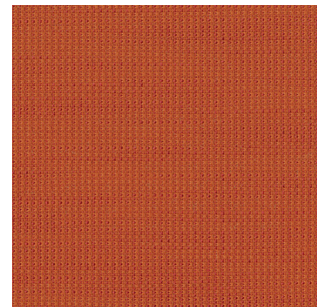
Sand  
12011



Sea Breeze  
12009



Shine  
12002



Sunset  
12003

# Ridge

<b>Grade</b>	1
<b>Content</b>	100% Polyester
<b>Finish/Backing</b>	None/Latex
<b>Antimicrobial</b>	No
<b>Flame Retardants</b>	No
<b>Repeat - Horizontal/Vertical</b>	None
<b>Railroad</b>	No
<b>Width</b>	54"
<b>Abrasion/Wyzenbeek (ASTM D4157)</b>	100,000 Double rubs
<b>Breaking Strength (ASTM D5034)</b>	160 lbs Warp, 164 lbs Fill
<b>Colorfastness to Light (AATCC 16.3)</b>	Class 4/40 hrs
<b>Crocking (AATCC 8)</b>	Grade 4 min. dry & Grade 3 min. wet
<b>Pilling (ASTM D3511)</b>	Class 4
<b>Seam Slippage (ASTM D4034)</b>	88 lbs Warp., 84 lbs Weft
<b>California TB 117-2013</b>	Pass
<b>NFPA 260</b>	Class 1
<b>UFAC</b>	Class 1
<b>Cleaning Code</b>	W
<b>Bleach Disinfectable</b>	No
<b>Dye Transfer/Reverse Crocking</b>	Some upholsteries may experience dye transfer (clothing dyes transfer to the seating fabric). This does not mean that the fabric of application is deficient, but rather it is an inherent characteristic of that fabric or application and is considered normal behavior. Once the dye transfer occurs, it is irreversible.

WS - Use water-based cleaning agents or foam. Mild water-free solvests may also be used. Cleaning by a professional furniture service is recommended.