

Strand

Seating Upholstery Collection

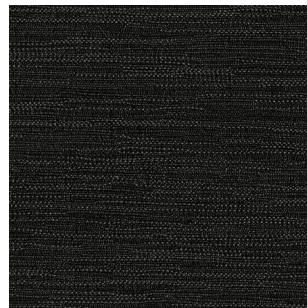
GRADE 2



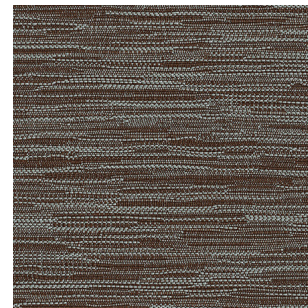
Blaze
20108



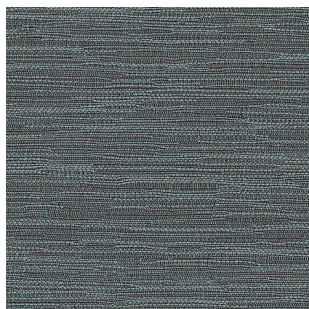
Blueberry
20104



Charcoal
20101



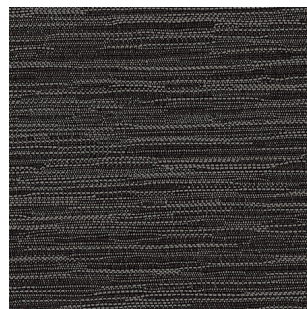
Coast
20110



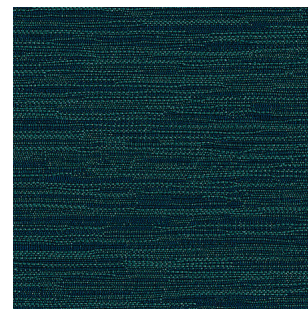
Cumulus
20109



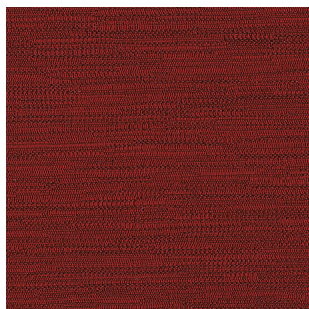
Fudge
20103



Mineral
20102



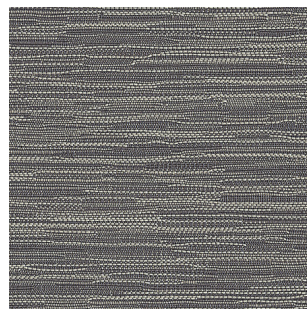
Peacock
20107



Red Licorice
20105



Sand
20111



Stone
20112



Wheat
20106

Strand

Grade	2
Content	100% Polyester
Finish/Backing	None/Latex
Antimicrobial	No
Flame Retardants	No
Repeat - Horizontal/Vertical	7.5. in. H/6 in. V
Railroad	No
Width	54"
Abrasion/Wyzenbeek (ASTM D4157)	40,000 Double rubs
Breaking Strength (ASTM D5034)	134 lbs Warp, 184 lbs Fill
Colorfastness to Light (AATCC 16.3)	Class 4/40 hrs
Crocking (AATCC 8)	Grade 4 min. dry & Grade 3 min. wet
Pilling (ASTM D3511)	Class 4
Seam Slippage (ASTM D4034)	74 lbs Warp., 49 lbs Weft
California TB 117-2013	Pass
NFPA 260	Class 1
UFAC	Class 1
Cleaning Code	W
Bleach Disinfectable	No
Dye Transfer/Reverse Crocking	Some upholsteries may experience dye transfer (clothing dyes transfer to the seating fabric). This does not mean that the fabric of application is deficient, but rather it is an inherent characteristic of that fabric or application and is considered normal behavior. Once the dye transfer occurs, it is irreversible.

WS - Use water-based cleaning agents or foam. Mild water-free solvests may also be used. Cleaning by a professional furniture service is recommended.