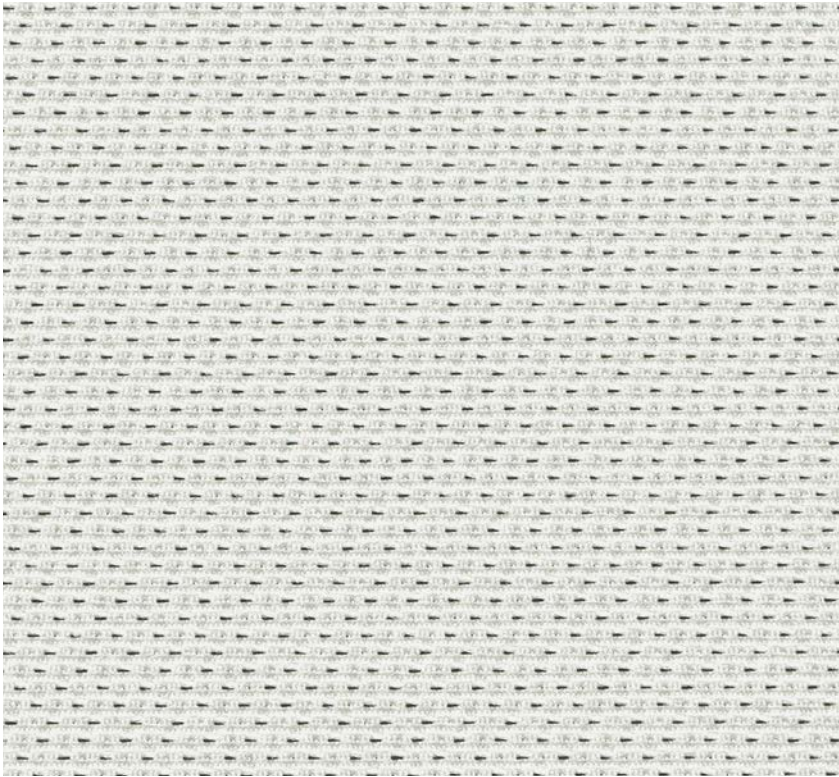


## Tack Board Fabric

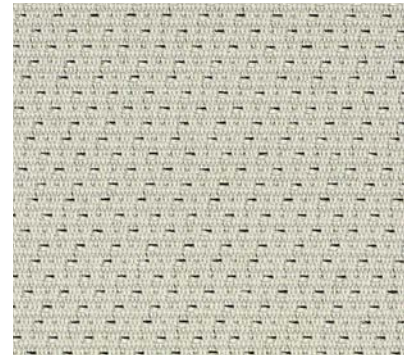
Grade A



3703 White



~~3705 Willow Deleted~~



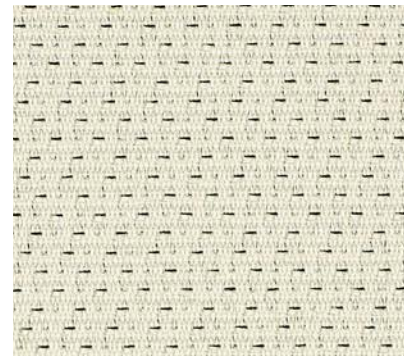
~~3775 Grey Green Deleted~~



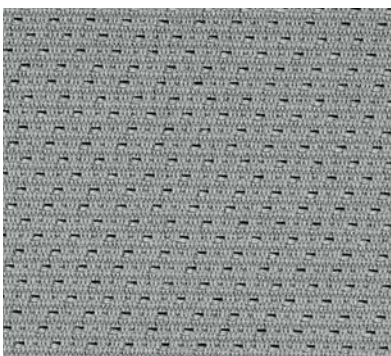
3709 Java



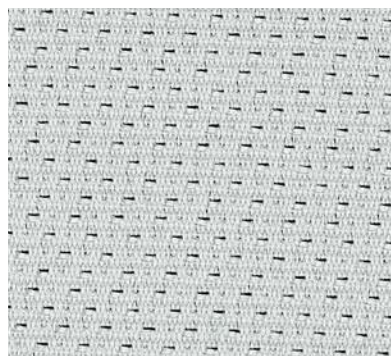
3721 Reed



3715 Almond



3700 Ash



3713 Stainless



3744 Tawny

# REPETITION

## Tack Board Fabric

Grade A

---

### SPECIFICATIONS

---

**Contents** 75% Pre-Consumer Recycled Polyester  
25% Post-Consumer Recycled Polyester

---

**Backing** None

---

**Finish** Light Acrylic

---

**Repeat** .213 in./Horizontal, .355 in./Vertical

---

**Railroad** When selecting railroad models, turn the card 90 degrees to simulate look.

---

**Width** 66"

---

**Weight** 11.7±1 oz./lin. yd.

---

PERFORMANCE   

---

**Light Fastness** Class 4/40 hrs. min. (AATCC 16 Option 3)

---

**Crocking** Class 3 Wet, Class 4 Dry (AATCC 8)

---

**Physical Properties** 225 lbs. Warp, 175 lbs. Fill (ASTM D5034) Breaking Strength

---

FLAMMABILITY 

---

**Passes** ASTM E84 Class 1 or A

---

### CARE

---

**Cleanability** ASTM E84 Class 1 or A

WS - Water based cleaning agents or foam or mild water-free solvents.

---

### REDUCED ENVIRONMENTAL IMPACT

---

Textiles may have an improved manufacturing process, contain recycled content or rapidly renewable material, have no backing, and/or be PVC or chrome-free.

---

Please reference price list for product applications.

Product details and other data are subject to change without notice.

We will always ship a satisfactory commercial color match.

Due to industry standard dye lot variation, colors may not match exactly.

Cut yardage and individual memo samples are available.

Contact National Customer Service for pricing and availability.

# NATIONAL

1610 ROYAL STREET, JASPER, IN, 47549  
TOLL FREE 800.482.1717  
WEB NATIONALOFFICEFURNITURE.COM

A Unit of Kimball International ©2006  
Form No. NSCREP Ver. 16  
2016