

WORLDWIDE  
SOLUTIONS

Arc|Com  
Energize

**interwoven™**

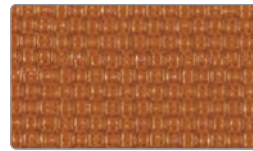




Arabesque  
AC-64042 Beach #3



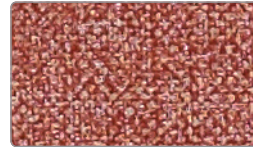
Cadence  
AC-64062 Beach #3



Tailored  
AC-64094 Tangerine #5



Tailored  
AC-64092 Sand #3



Ambiance  
AC-63776 Strawberry #7



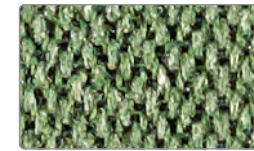
Insight  
AC-63547 Cocoa #28



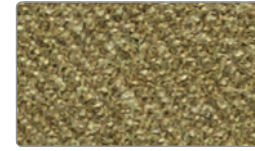
Transform  
AC-64130 Maple #1



Insight  
AC-63522 Citrine #3



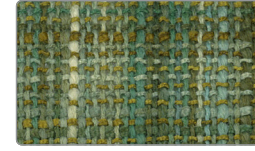
Watson  
AC-63926 Evergreen #7



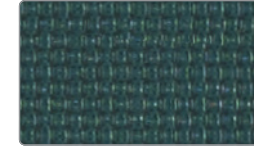
Transform  
AC-64139 Kiwi #10



Evolution  
AC-63955 Forest #7



Apollo  
AC-63359 Grass #10



Tailored  
AC-64098 Mallard #9



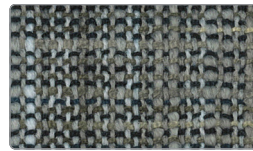
Traverse  
AC-63450 Leaf #11



Tailored  
AC-64106 Ash #17



Insight  
AC-63540 Mist #21



Apollo  
AC-63351 Granite #2



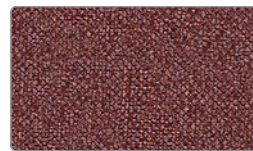
Evolution  
AC-63964 Stone #15



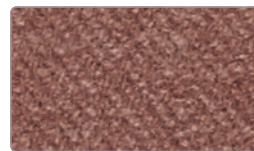
Quest  
AC-63577 Blossom #8



Evolution  
AC-63954 Blossom #6



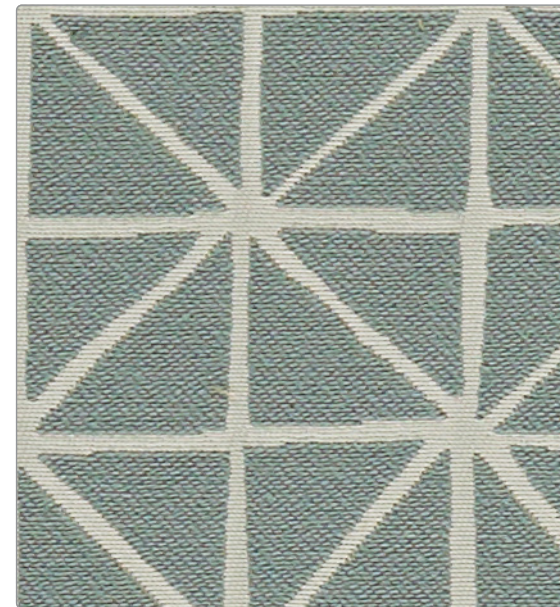
Cadence  
AC-64070 Merlot #11



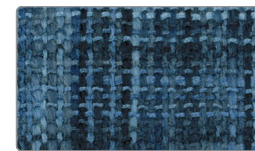
Transform  
AC-64138 Blossom #9



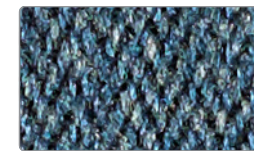
Insight  
AC-63530 Plum #11



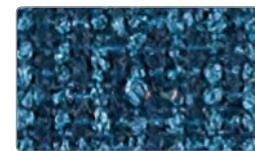
Grid  
AC-61252 Moonstone #13



Apollo  
AC-63357 Ocean #8



Watson  
AC-63927 Ocean #8



Rogue  
AC-62551 Sapphire #12



Transform  
AC-64145 Midnight #16



Insight  
AC-63541 Fir #22



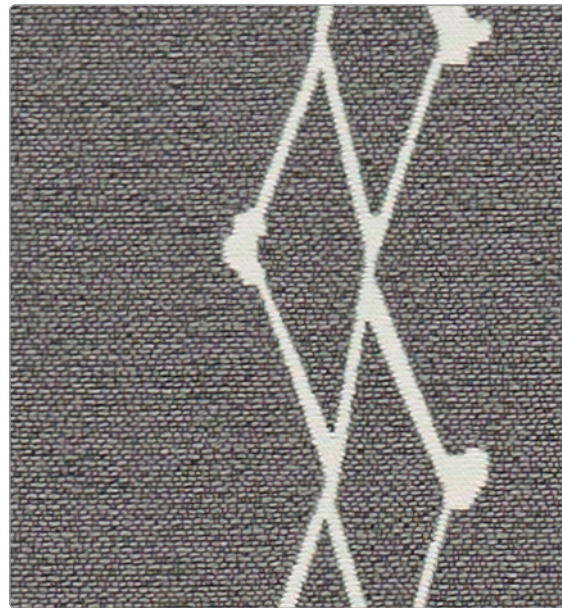
Ambiance  
AC-63771 Moonstone #2



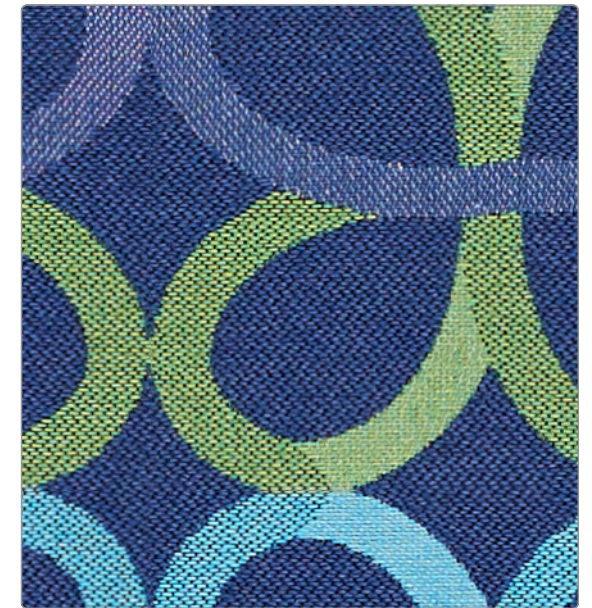
Engrave  
AC-64020 Deep Sea #11



Tailored  
AC-64100 Slate #11



Centring Stripe  
AC-62857 Ash #8



Around  
AC-63838 Midnight #9



54" Pattern	Approx. Repeat	Fiber Content & Finish	Abrasion (Wyzenbeek*)	Lightfastness (AATCC Method 16)	Cleaning Code
AMBIANCE	V-none H-none	100% Vinyl Face, 100% Polyester Hi-Loft™ Back PERMABLOK® Stain Resistant	300,000 D.R.	200 hours	WS/BC
APOLLO	V-none H-none	100% Polyester CRYPTON®	150,000 D.R.	40 hours	WS/BC
ARABESQUE®	V-10 ¼" H-10"	98% Polyurethane, 2% Silicone Face, 100% Polyester Back WriteOut® Ink Resistant	200,000 D.R.	200 hours	WS/BC
AROUND®	V-6 ½" H-7 ¼"	79% Polyester, 21% Nylon CRYPTON®	100,000 D.R.	40 hours	WS/BC
CADENCE	V-none H-none	98% Polyurethane, 2% Silicone Face, 100% Polyester Back WriteOut® Ink Resistant	200,000 D.R.	200 hours	WS/BC
CENTRING STRIPE®	V-23" H-4 ½"	74% PCR Polyester, 26% Nylon INCASE™ Fabric Protection, Acrylic Backing	145,000 D.R.	40 hours	WS/BC
ENGRAVE®	V-none H-none	95% Polyurethane, 5% Silicone Face, 100% Polyester Back WriteOut® Ink Resistant	300,000 D.R.	200 hours	WS/BC
EVOLUTION®	V-11 ½" H-¼"	63% Polyester, 37% Acrylic Stain Resistant, Acrylic Backing	125,000 D.R.	40 hours	WS/BC
GRID®	V-7" H-9 ¼"	74% PCR Polyester, 26% Nylon alta™ performance technology, Acrylic Backing	145,000 D.R.	60 hours	WS/BC
INSIGHT	V-none H-none	100% Phthalate Free Vinyl Face, 100% Polyester Back Stain Resistant	300,000 D.R.	200 hours	WS/BC
QUEST®	V-2" H-1"	63% Polyester, 37% Acrylic Stain Resistant, Acrylic Backing	145,000 D.R.	40 hours	WS/BC
ROGUE	V-none H-none	48% Polyester, 33% PIR Polyester, 19% PCR Polyester CRYPTON® green	150,000 D.R.	40 hours	WS/BC
TAILORED	V-none H-none	95% Polyurethane, 5% Silicone Face, 100% Polyester Back WriteOut® Ink Resistant	300,000 D.R.	200 hours	WS/BC
TRANSFORM	V-none H-none	100% Polyester Stain Resistant, Acrylic Backing	100,000 D.R.	60 hours	WS/BC
TRAVERSE®	V-9 ¾" H-5"	56% PCR Polyester, 23% Polyester, 21% Solution-Dyed Nylon CRYPTON®	150,000 D.R.	40 hours	WS/BC
WATSON	V-none H-none <b>Shown Railroaded</b>	68% Olefin, 32% Polyester Stain Resistant, Acrylic Backing	110,000 D.R.	40 hours	WS/BC

Cleaning Codes:

WS - Water based cleaning agents or foam may be used.

BC - May be cleaned with bleach following the proper ratio of water and bleach.

Cleaning by a professional service is recommended.

See Arc|Com Textile samples for specific technical data.



\*Abrasion test results exceeding ACT Performance Guidelines are not an indicator of product lifespan. Multiple factors affect fabric durability and appearance retention.

This card represents only a select sampling of the Arc|Com fabrics available. For the complete selection of patterns and colorways and/or samples of our specific fabrics visit our website at [arc-com.com](http://arc-com.com) or contact Arc|Com.

**interwoven™**

800.418.7205  
interwovenhealth.com  
Form IWSCARCENE ver.21a

**Arc|Com**

arc-com.com  
800 223 5466