

Accessories and Work Tools Solutions



NATIONAL®

Add ten points to your efficiency IQ and get more out of every minute in the office.



Whether you're obsessed with neatness or just organizationally challenged, National offers accessory choices to fit your individual style. Configure the ergonomic ideal for your PC with a variety of trays and adjustable mounting options for keyboard and monitor. Power and wire management solutions make it easy to connect without confusion. Count on your work essentials to stay orderly and ready, day in and day out. Center drawers in wood, laminate, or plastic offer convenient slide-out storage for the myriad little stuff you need instantly. You can mount a host of goodies including pencil cups, phone holders, binder shelves, paper trays, etc., right to your slat wall for easy access and clutter-free surfaces.



Contents

Center Drawers 4
 Keyboard Kits/Trays 4
 Monitor Arms 5
 Corner Sleeves 5
 Lighting 5

Personal Table 5
 Drawer Organizers 5
 Power/Data and Wire Management 6
 Slat Walls/Work Tools 8
 Tack Boards 9

Presentation Products 10
 Organizational Tools 10
 Privacy Screens 11

Center Drawers



Wood Center Drawer

- Features an angled front edge for a clean profile when drawer is closed
- Extends 10" from worksurface edge
- Features a pencil divider, drawer stops and hardware
- IM Brighton, NM Natural, HN Honey, CL Caramel, TF Truffle, AC Autumn, MC Amber, CW Cordovan, DW Judicial, MH Mocha, 792 Sable



Laminate Center Drawer

- Features a flat front edge for a flush profile when drawer is closed
- Extends 18" from worksurface edge
- IM Brighton, NM Natural, HN2 Honey 2, CL Caramel, TF Truffle, AC2 Autumn, MC Amber, CW Cordovan, DW Judicial, MH Mocha, 791 Palisander, 792 Sable, 793 Acorn, 405 Designer White, 417 Mojave, 418 Mouse, 419 Wallaby, 425 Shadow, 440 Cloud, 461 Graphite, 462 Cinder, 478 Platinum Grey, 488 Frosty White, 491 Designer White Linear, 492 Cinder Linear



Plastic Center Drawer

- Plastic tray features individual compartments ideal for small office supplies
- Black plastic

Keyboard Kits/Trays



Keyboard Tray

- Height adjustable keyboard tray



Keyboard Tray/Mouse Pad

- Includes height adjustable keyboard tray, adjustable palm rest and sliding mouse tray
- Mouse tray extends on either left or right side of keyboard



Basic Keyboard Kit

- Includes keyboard mechanism, clamp, wrist pad and mouse tray
- Simultaneous tilt and height adjust with 360° swivel



Intuitive Adjustable Keyboard Kit

- Includes keyboard mechanism, tray platform, foam gel wrist pad and adjustable mouse tray
- Dial tilt allows for adjustment from -10° to 15° and slides in and out under worksurface; Arm tilts and moves up and down; 360° swivel



Ergonomic Adjustable Keyboard Kit

- Includes keyboard mechanism, tray platform, foam gel wrist pad and adjustable mouse tray
- Tray adjusts from -10° to 15° and slides in and out under worksurface; Arm tilts and moves up and down; 360° swivel



Clever® Keyboard Kit

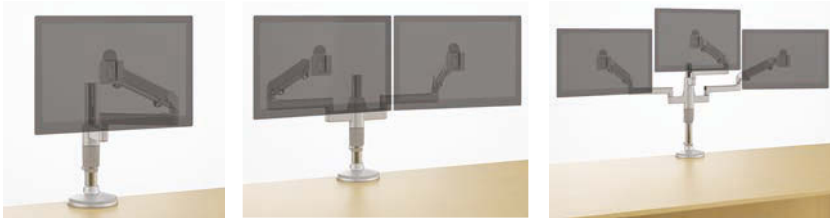
- Includes keyboard mechanism, tray platform, foam gel wrist pad and adjustable mouse tray
- Simultaneous tilt and height adjustment; slides in and out under worksurface; 360° swivel
- For use only with Clever® casegoods



Sit-to-Stand Adjustable Keyboard Kit

- Adjusts intuitively from sitting to standing height; 7" below worksurface and 4 1/4" above worksurface
- Tray adjusts from -10° to 15°

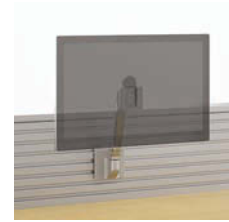
Monitor Arms



Clamp Mount Monitor Arm



Grommet Mount Monitor Arm



Slat Mount Monitor Arm

Clamp Mount Monitor Arm Single, double, and triple options; Mounts flat panel monitor above the worksurface; Easily adjust monitor's angle/depth/height; Supports up to 20 lbs.; Arm raises to 19 1/2"; Extends to 27 1/2"; Rotates 360°; Clamps to worksurface; Silver or Black

Grommet Mount Monitor Arm Single, double, and triple options; Mounts flat panel monitor above the worksurface; Easily adjust monitor's angle/depth/height; Supports up to 20 lbs.; Arm raises to 19 1/2"; Extends to 27 1/2"; Rotates 360°; Attaches through grommet in worksurface; Silver or Black

Slat Mount Monitor Arm Attaches to Epicenter® and Exhibit™ slat walls; Mounts flat panel monitor above the worksurface; Easily adjust monitor's angle/depth/height; Supports up to 20 lbs.; Arm raises to 19 1/2"; Extends to 27 1/2"; Rotates 360°; Silver or Black

Drawer Organizers



Deluxe Drawer Organizer

- Individual compartments for organizing small office supplies
- Convenient Post-it® note storage
- Expands to 16" wide
- Black plastic



Box Drawer Convenience Tray

- Holds pencils, pens, paper clips, etc.
- For use in 15" wide pedestals
- Black plastic



Carousel Tray

- Molded plastic tray features individual compartments ideal for organizing small office supplies
- Rotates outward from either left or right side
- Features a self-centering mechanism which acts as a stop to maintain proper alignment with front edge of worksurface
- Black plastic

Corner Sleeves



Corner Sleeve

- Attaches across corner of 90° units
- Creates a 45° worksurface ideal for computer use
- Black metal

Lighting



Task Light

- Attaches to underside of Highback Organizers, Wall Mount Cabinets and Work Organizers
- Warm, white lamps included
- Black finish



LED Task Light

- Attaches to underside of Highback Organizers, Wall Mount Cabinets and Work Organizers
- Three units can be daisy chained together
- UL listed
- Silver finish



LED Linear Task Light

- Attaches to underside of Highback Organizers, Wall Mount Cabinets and Work Organizers
- Soft touch switch with instant on and fade-away off
- Automatic time off (after 10 hours)
- Clear anodized aluminum with white end caps

Personal Table



Personal Pull-Up Table

- Wood or laminate
- Metal finish available in Cinder, Platinum Metallic, or Satin Nickel Metallic

Power/Data and Wire Management



Corner Channel with Power

- Includes four grounded power outlets and two voice/data ports; 15 Amp circuit breaker; 6' power cord
- Attaches vertically/horizontally above or below worksurface along inside corners
- Black



Convenience Outlet

- Includes five power outlets, one telephone jack with 14' cord and remote on/off power switch; 10' power cord
- Attaches to underside of worksurface



Power Center

- Fits into racetrack and channel grommets
- Extends 7/8" above worksurface
- Includes four power outlets; 10' power cord
- Black



Power/Communication Center

- Fits into racetrack and channel grommets
- Extends 7/8" above worksurface
- Includes two power outlets and two blank voice/data ports; 10' power cord
- Black



Flexi Grommet

- Flexible one-piece grommet
- Black, 2 1/4" diameter



Grommet

- Nylon two-piece grommet
- Black, 2 1/4" diameter



SILVER BLACK

One Touch Pivoting Power Grommets

- Includes one power outlet and one blank voice/data port; one power outlet and two USB charging ports; or two power outlets
- Silver or Black



Byrne Interlink® System

- Each Interlink module contains a power/communication center that features two power outlets and two blank voice/data ports
- The Interlink system can be used with as few as one Interlink module and up to as many as eight modules
- For use with Captivate®, Casbah®, Epic® and WaveWorks® casegoods
- UL recognized

Byrne Interlink® IQ System

- Each Interlink IQ module contains a pivoting power grommet that includes one power outlet and one blank voice/data port, or two power outlets
- The Interlink IQ is a non-sequential daisy chain solution
- A total of eight modules can be daisy chained together in any combination
- For use with Epic®, Renegade™ and WaveWorks® casegoods
- UL recognized



Shown with the Byrne Interlink System



Power Director

- Includes phone/fax/modem with surge protector, five high speed data ports and two sets of dual USB ports; 10' power cord
- Attaches to underside of worksurface
- Black



Power/Data Center

- Fits into standard round grommets
- Includes 2 power outlets and 2 blank voice/data ports
- Extends 3" above worksurface
- 6' power cord
- Black



Vertical Wire Manager

- Conceals power in-feed and data cables
- Attaches to underside of worksurface
- Flexible graphite plastic



Undersurface Wire Manager

- Manages and routes unruly data and power cords
- Attaches vertically or horizontally above or below worksurface
- Black plastic



Undersurface Wire Manager

- Can be used on any unit to manage and route data and power cords
- Attaches below worksurface
- Black plastic



Undersurface Wire Manager

- Manages and routes cords
- Attaches to underside of worksurface
- Black nylon



Horizontal Wire Manager

- Conceals power in-feed and data cables
- Attaches vertically or horizontally above or below worksurface
- Black plastic



Power Tower

- Includes nine power receptacles and six USB charging ports
- Freestanding; 108" power cord
- Silver, Black, or White



Mobile CPU Cart

- Mobile platform for CPUs provides convenient accessibility to cables
- Features black non-locking casters
- Fits CPUs up to 9" wide, up to 40 lbs.
- Black



CPU Holder

- Self-locking ratchet style CPU storage device with Teflon glide storage
- Height and width adjustable; Rotates 360°
- Fits CPUs up to 9" wide, up to 85 lbs.
- Mounts to underside of worksurface
- Black

Slat Walls



462

501

503

Slat Wall Inserts

- Horizontal slats provide vertical surface for work tools
- Inserts available in Exhibit™ and Epicenter®
- Available in 462 Cinder, 501 Platinum Metallic, and 503 Satin Nickel Metallic

Metal Work Tools



Shelf

Features Available in 24", 30", 36", 42", and 48" widths



Single Side Tray



Double Side Tray



Pocket Organizer



Slant Sorter



Binder Shelf



Black Pencil Tray

Black Plastic Work Tools



Legal Paper Tray



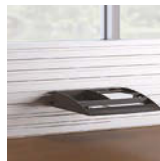
Slant Sorter



Binder Shelf



Phone Holder



Accessory Tray



Pencil Cup

Clear Plastic Work Tools



Legal Paper Tray



Slant Sorter



Phone Holder



Accessory Tray



Pencil Cup

Tack Boards



Tack Boards

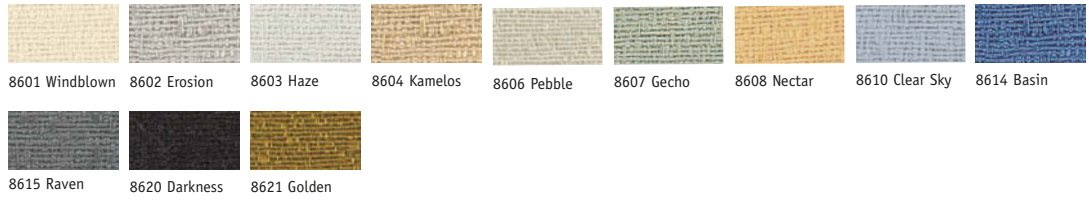
- Mounts onto back panel of highback organizer or to wall
- Most models feature wire management for task light cord
- Available in a variety of heights and widths
- Available in Dune, Repetition, and Pact tack board fabrics

Dune

Grade A 100% Polyester

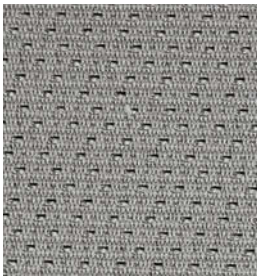


8600 Drift



Repetition

Grade A 75% Pre-Consumer Recycled Polyester, 25% Post-Consumer Recycled Polyester



3700 Ash



Pact

Grade B 65% Pre-Consumer Recycled Polyester, 35% Post-Consumer Recycled Polyester



25401 Aloe

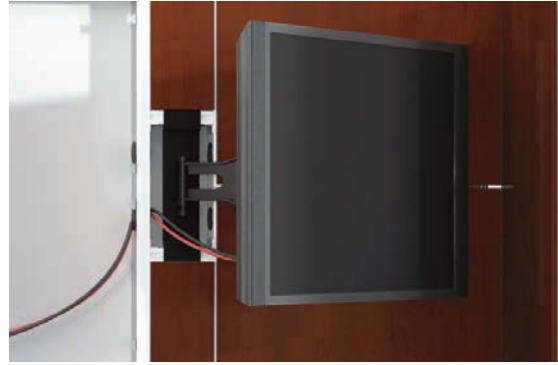


Presentation Products



Universal Media Wall

- Wall mount or suspend and gang with media storage towers and media storage credenza; Removable panels for cord/wire management access; Includes Flat Screen Mount Kit
- Widths: 48", 60", 72"
- Hardwood veneer or laminate; Platinum Metallic accents
- IM Brighton, NM Natural, HN/HN2 Honey 2, CL Caramel, TF Truffle, AC/AC2 Autumn, MC Amber, CW Cordovan, DW Judicial, MH Mocha, 791 Palisander, 792 Sable, 793 Acorn, 405 Designer White, 417 Mojave, 418 Mouse, 419 Wallaby, 425 Shadow, 440 Cloud, 461 Graphite, 462 Cinder, 478 Platinum Grey, 488 Frosty White, 491 Designer White Linear, 492 Cinder Linear



Flat Screen Mount Kit (Fixed or Articulating)

- Attaches flat screen TV/monitors to Universal Media Wall; Supports screen sizes 37" to 65"
- Fixed Mount Kit: Tilts up to 20° and rotates 180° portrait-to-landscape
- Articulating Mount Kit: Extends up to 20" from wall, pans left/right up to 90°, tilts up to 30° and rotates 180° portrait-to-landscape
- Included with Universal Media Wall



Universal Media Shelf

- Mounts to Universal Media Wall or sets on surface; Cut-outs in base for wire access
- Clear glass shelf with Platinum Metallic stanchions and hardwood veneer base
- Widths: 48", 60", 72"



Universal Visual Board

- Dry erase marker board; Pegs for hanging flip chart pad; Black tack board inside each door; Set of dry erase markers/eraser included; Hardwood veneer or laminate
- IM Brighton, NM Natural, HN/HN2 Honey 2, CL Caramel, TF Truffle, AC/AC2 Autumn, MC Amber, CW Cordovan, DW Judicial, MH Mocha, 791 Palisander, 792 Sable, 793 Acorn, 405 Designer White, 417 Mojave, 418 Mouse, 419 Wallaby, 425 Shadow, 440 Cloud, 461 Graphite, 462 Cinder, 478 Platinum Grey, 488 Frosty White, 491 Designer White Linear, 492 Cinder Linear



Escalade® Visual Board Cornice Top

- Mitered wood veneer cornice top attaches to top of Universal Visual Board
- Hardwood veneer: IM Brighton, NM Natural, HN Honey, CL Caramel, TF Truffle, AC Autumn, MC Amber, CW Cordovan, DW Judicial, MH Mocha, 792 Sable

Organizational Tools



Vertical Pigeon Hole Storage

- For use under highback organizer; sits on worksurface
- Features three fixed shelves; Hardwood veneer or laminate
- Compatible with Casbah®, Epic®, Renegade™ and WaveWorks® casegoods
- IM Brighton, NM Natural, HN/HN2 Honey 2, CL Caramel, TF Truffle, AC/AC2 Autumn, MC Amber, CW Cordovan, DW Judicial, MH Mocha, 791 Palisander, 792 Sable, 793 Acorn, 405 Designer White, 417 Mojave, 418 Mouse, 419 Wallaby, 425 Shadow, 440 Cloud, 461 Graphite, 462 Cinder, 478 Platinum Grey, 488 Frosty White, 491 Designer White Linear, 492 Cinder Linear



Organizing Stacker

- Divide cabinets by creating smaller slots within an overhead storage cabinet, highback organizer or bookcase; use one or stack multiple units
- Compatible with Casbah®, Epic®, Renegade™ and WaveWorks® casegoods
- Available in a variety of widths; Hardwood veneer or laminate
- IM Brighton, NM Natural, HN/HN2 Honey 2, CL Caramel, TF Truffle, AC/AC2 Autumn, MC Amber, CW Cordovan, DW Judicial, MH Mocha, 791 Palisander, 792 Sable, 793 Acorn, 405 Designer White, 417 Mojave, 418 Mouse, 419 Wallaby, 425 Shadow, 440 Cloud, 461 Graphite, 462 Cinder, 478 Platinum Grey, 488 Frosty White, 491 Designer White Linear, 492 Cinder Linear



Waste Container

- Concealed, pivoting waste container
- For use in buffet or double door storage credenzas
- White plastic



Deluxe Lectern

- Adjustable tilt writing surface, light, microphone, slide out shelf, slide out step stool, locking cabinet doors, convenience outlet for power access, hinged back panel for wire access and dual wheel casters; Hardwood Veneer or laminate; Platinum Metallic accents

Basic Lectern

- Adjustable tilt writing surface, open cabinet and adjustable shelf; Hardwood Veneer or Laminate; Platinum Metallic accents

Set-On Surface Lectern

- Adjustable tilt writing surface; Hardwood veneer or Laminate; Platinum Metallic accents

Mobile Lectern

- Laminate with black pencil ledge; Mobile base available in Cinder, Platinum Metallic or Satin Nickel Metallic; Locking casters

Wood Finishes/Laminates IM Brighton, NM Natural, HN/HN2 Honey 2, CL Caramel, TF Truffle, AC/AC2 Autumn, MC Amber, CW Cordovan, DW Judicial, MH Mocha, 791 Palisander, 792 Sable, 793 Acorn, 405 Designer White, 417 Mojave, 418 Mouse, 419 Wallaby, 425 Shadow, 440 Cloud, 461 Graphite, 462 Cinder, 478 Platinum Grey, 488 Frosty White, 491 Designer White Linear, 492 Cinder Linear



Traditional Visual Board

- Dry erase marker board; Pegs for hanging flip chart pad; Black tack board inside each door; Set of dry erase markers/eraser included
- Hardwood Veneer; Picture frame molding on doors
- TF Truffle, CW Cordovan, DW Judicial, MH Mocha



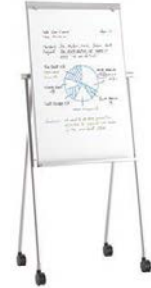
Marker Board

- Slim profile dry erase marker board with tray
- White board; black aluminum trim



Mobile Media Cart

- Supports one plasma or LCD screen 37" to 70"; includes mounting bracket, one adjustable height shelf, wire management in rear, adjustable camera platform, and six port power module
- Four 5" locking casters
- Gun Metal Grey powder coat finish



Mobile Marker Board

- High gloss, white laminate marker board
- 4 locking casters
- Adjustable brackets to hang flip chart
- 462 Cinder, 501 Platinum Metallic, 503 Satin Nickel Metallic

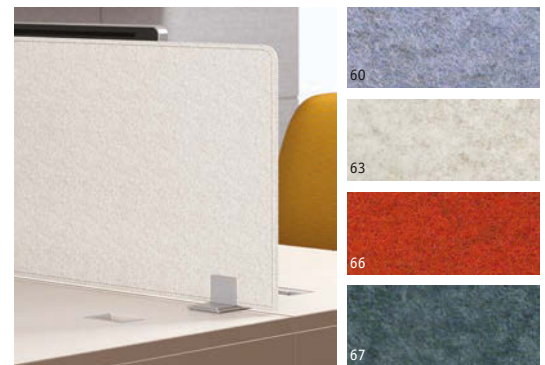
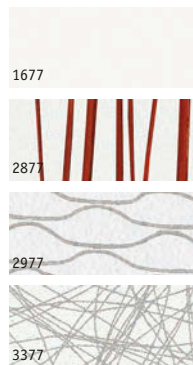
Privacy Screens



Resin Tapered



Resin Softened

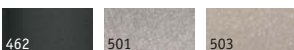


Resin Privacy Screens

- Privacy screens provide seating height privacy and can sit on any surface
- Available in tapered or softened styles
- Resins: 1677 Frosted, 2877 Ting Ting, 2977 Scribble Cloud, 3377 Wisp Silver
- Metal supports: 462 Cinder, 501 Platinum Metallic, 503 Satin Nickel Metallic

Felt Privacy Screens

- Privacy screens provide seating height privacy and can sit on any surface
- Available in softened style
- Felts: 60 Light Blue, 63 Off White, 66 Orange, 67 Stone Grey
- Metal supports: 462 Cinder, 501 Platinum Metallic, 503 Satin Nickel Metallic



Whether you're obsessed with neatness or just organizationally challenged, National Office Furniture offers accessory choices to fit your individual style.



NATIONAL®

www.NationalOfficeFurniture.com

1610 Royal Street, Jasper, IN 47549

800.482.1717 Fax 812.482.8800

©Kimball International, Inc. 2016

Printed in the USA

Form No. NBRACC Ver. 16

A Unit of Kimball International

